

# Twin Series Pipe Clamps

## Complete Assembly Ordering Code

chart 1 chart 2 chart 3 chart 4 chart 5

# TW T 41050-PP-MET

### Clamp Configuration chart 1

TW	Complete Clamp for Weld Mounting
R0T	Complete Clamp for Mounting to RAL-0
R1T/R4T	Complete Clamp for Mounting to RAL-1
UT	Complete Clamp for Mounting to Strut Channel
TWSK	Complete Stacking Kit

### Hardware Material chart 2

Omit	Electro-Zinc Dichromate Plating
T	AISI 304 Stainless Steel (A2 - 1.4301/1.4305)
X	AISI 316/316Ti Stainless Steel (A4 - 1.4401/1.4571)
C	Untreated Carbon Steel

### Clamp Pair Material chart 4

PP	Polypropylene
SP	Santoprene

### Threads chart 5

Omit	UNC Thread (Standard)
MET	Metric Thread

### Clamp Group and Size chart 3

Behringer Group	Pipe Size	Tube Size	Metric OD (mm)	Imperial OD (Inch)	Order No.
T1		1/4	6.4	0.250	1025
		3/8	9.5	0.375	1038
		12 mm	12.0	0.472	10472
T2		1/4	6.5	0.250	2025
		3/8	9.5	0.375	2038
	1/8		10.0	0.405	20405
		1/2	12.7	0.500	2050
	1/4		14.0	0.540	20540
		5/8	16.0	0.625	2062
	3/8		17.0	0.675	20675
T3		3/4	19.0	0.750	3075
	1/2		21.3	0.840	30840
		7/8	22.2	0.875	3087
		1	25.4	1.000	3100
T4		7/8	22.2	0.875	4087
		1	25.4	1.000	4100
	3/4		26.7	1.050	41050
		1 1/8	28.6	1.125	41125
T5		3/4	19.0	0.750	5075
		1 1/4	32.0	1.250	5125
	1		33.4	1.315	51315
		1 1/2	38.1	1.500	5150
	1 1/4		42.2	1.660	51660

# Twin Series Pipe Clamps

## Ordering Examples

### Clamp for Weld Mounting

TW



**Consists of:**

- 1 HEX bolt
- 1 TCP Cover Plate
- 1 CLH Clamp Set (2 halves)
- 1 TWP Weld Plate

### Stacking Kit

TWSK



**Consists of:**

- 1 STB Stacking bolt
- 1 SAF Safety Plate
- 1 CLH Clamp Set (2 halves)

### Clamp for RAL-0 Mounting

R0T



**Consists of:**

- 1 HEX bolt
- 1 TCP Cover Plate
- 1 CLH Clamp Set (2 halves)
- 1 RCN-0 Rail Nut

### Clamp for RAL-1 Mounting

R1T  
R4T



**Consists of:**

- 1 HEX bolt
- 1 TCP Cover Plate
- 1 CLH Clamp Set (2 halves)
- 1 RCN-4 Rail Nut

### Clamp for Strut Mounting

UT

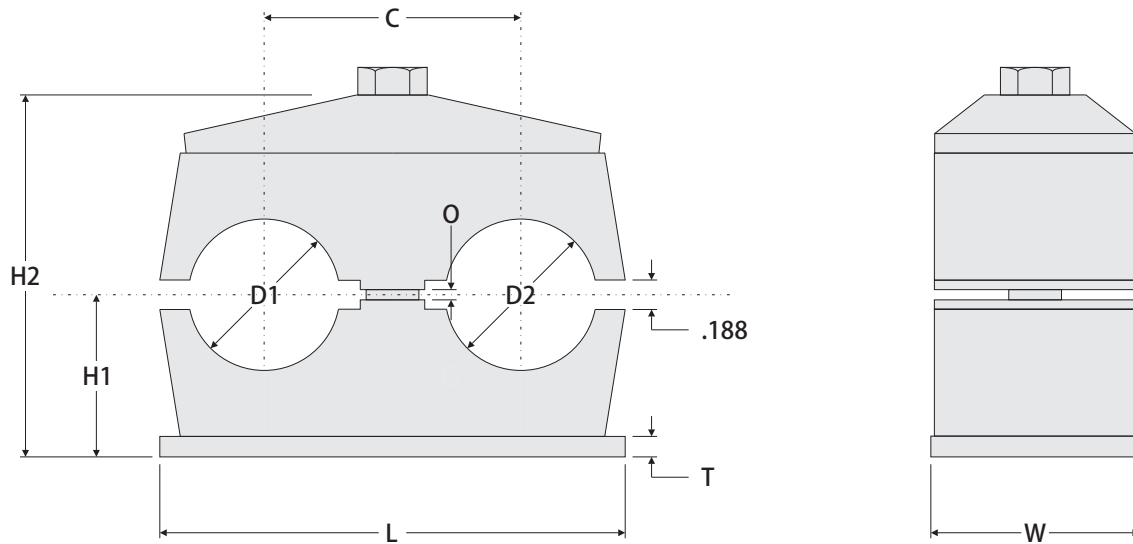


**Consists of:**

- 1 HEX bolt
- 1 TCP Cover Plate
- 1 CLH Clamp Set (2 halves)
- 1 UCN Strut Clip

# Twin Series Pipe Clamps

## Complete Assembly Dimensions



### Clamp Assembly Dimensions

Behringer Group	D1 / D2	L	C	H1	H2	T	W	O
T1	See ordering code on page 20 for available diameters.	1.449 in. (37 mm)	0.781 in. (20 mm)	0.563 in. (14.3 mm)	1.235 in. (31.4 mm)	0.188 in. (5 mm)	1.188 in. (30 mm)	0.063 in. (1.6 mm)
T2		2.188 in. (56 mm)	1.250 in. (32 mm)	0.688 in. (17.5 mm)	1.454 in. (37 mm)	0.188 in. (5 mm)	1.188 in. (30 mm)	0.063 in. (1.6 mm)
T3		2.688 in. (68.3 mm)	1.438 in. (36.5 mm)	0.938 in. (23.8 mm)	1.954 in. (49.6 mm)	0.188 in. (5 mm)	1.188 in. (30 mm)	0.063 in. (1.6 mm)
T4		3.188 in. (81 mm)	1.813 in. (46.1 mm)	1.063 in. (27 mm)	2.204 in. (56 mm)	0.188 in. (5 mm)	1.188 in. (30 mm)	0.063 in. (1.6 mm)
T5		4.063 in. (103 mm)	2.188 in. (56 mm)	1.313 in. (33.3 mm)	2.704 in. (68.7 mm)	0.188 in. (5 mm)	1.188 in. (30 mm)	0.063 in. (1.6 mm)