

# PROCESS HEX HANGERS - PHH SERIES TUBE AND PIPE HANGERS

## APPLICATIONS:

- Cleanrooms and mechanical areas; not limited to: biotech, pharmaceutical, food processing, beverage, dairy, cosmetic, chemical, water treatment, and semi-conductor industries.
- Low flow & low pressure systems with moderate vibration: WFI, SIP, CIP, process, utility & instrument lines, WFI, SIP, CIP, process, utilities & instrument lines

## SIZES:

- Support Range: 1/4" - 6" Tube and 1/2" - 6" Pipe

## FEATURES:

- ZERO PUDDLE Silicones inserts raised geometry facilitates drainage of liquids on vertical/riser lines creating maintenance uptime.

## MATERIALS:

- 304 and 316 stainless steels
- ZERO PUDDLE inserts are FDA grade silicone rubber

## SPECIFICATIONS:

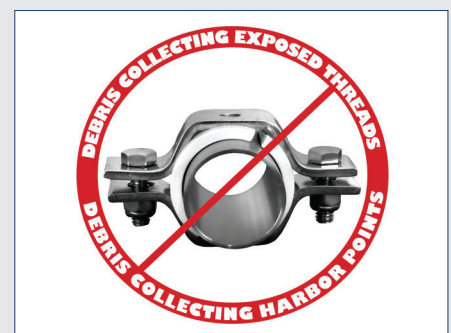
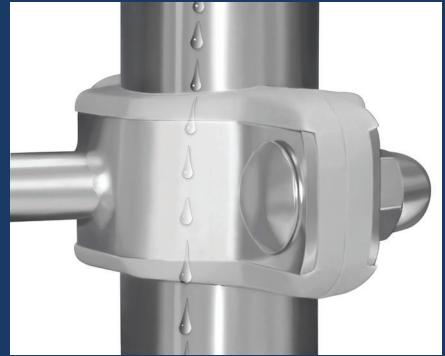
- Intermittent temperatures from -40F to 320F
- Continuous temperatures from -20F to 302F - Contact Syntiro with continuous application's environmental details

## BENEFITS:

- Drainable and Cleanable
- There are no exposed threads or openings in hardware plates
- Carriage bolts lock into Hardware Frame;s square hole allowing installer to use a single wrench
- The antiquated Entrapping Hex Hanger requires two wrenches, increasing safety concerns and installation time
- Carriage bolts are reversible, so rounded drainable surface is always on the hangers topside
- Hanger threads match MSS 69 rod OD requirements
- Silicone inserts are resistant to high and low temperatures

Refer to [www.syntirocorp.com](http://www.syntirocorp.com) or call Syntiro for most up to date information

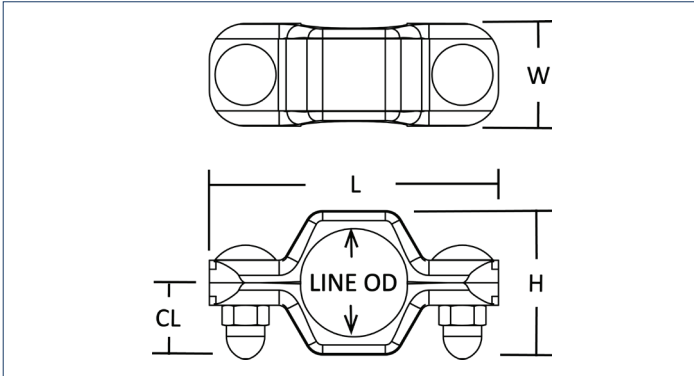
## ZERO PUDDLE INSERT



If you cannot see it, reach it, clean it, or sample it, this could be a concerning pathogen harbor point.

# PROCESS HEX HANGER WELD MOUNT - PHHW

Mounting rod is welded to PHH's frame



for 316 hardware substitute 304 with 316

Tube Size	Line OD	H	L	W	CL	Part Number w/ Acorn Nut	Part Number w/ Lock Nut *
1/2"	0.50	1.15	2.80	1.10	0.58	PHHW0.50T304SAN	PHHW0.50T304SLN
3/4"	0.75	1.15	2.80	1.10	0.58	PHHW0.75T304SAN	PHHW0.75T304SLN
1"	1.00	1.45	3.00	1.10	0.73	PHHW1.0T304SAN	PHHW1.0T304SLN
1 1/2"	1.50	1.96	4.00	1.42	0.98	PHHW1.5T304SAN	PHHW1.5T304SLN
1 1/2"	1.50	2.16	4.00	1.42	1.08	PHHWH1.5T304SAN **	PHHWH1.5T304SLN **
2"	2.00	2.50	4.60	1.42	1.25	PHHW2.0T304SAN	PHHW2.0T304SLN
2"	2.00	2.70	4.60	1.42	1.35	PHHWH2.0T304SAN **	PHHWH2.0T304SLN **
2 1/2"	2.50	3.00	5.10	1.42	1.50	PHHW2.5T304SAN	PHHW2.5T304SLN
3"	3.00	3.50	5.60	1.42	1.75	PHHW3.0T304SAN	PHHW3.0T304SLN
4"	4.00	4.55	6.75	1.42	2.28	PHHW4.0T304SAN	PHHW4.0T304SLN
6"	6.00	6.29	9.25	1.42	3.15	PHHW6.0T304SAN	PHHW6.0T304SLN
Pipe Size	Line OD	H	L	W	CL	Part Number w/ Acorn Nut	Part Number w/ Lock Nut *
1/2"	0.840	1.45	3.00	1.10	0.73	PHHW0.50P304SAN	PHHW0.50P304SLN
3/4"	1.050	1.45	3.00	1.10	0.73	PHHW0.75P304SAN	PHHW0.75P304SLN
1"	1.315	1.96	4.00	1.42	0.98	PHHW1.0P304SAN	PHHW1.0P304SLN
1"	1.315	2.16	4.00	1.42	1.08	PHHWH1.0P304SAN **	PHHWH1.0P304SLN **
1 1/4"	1.660	2.50	4.60	1.42	1.25	PHHW1.25P304SAN	PHHW1.25P304SLN
1 1/4"	1.660	2.70	4.60	1.42	1.35	PHHWH1.25P304SAN **	PHHWH1.25P304SLN **
1 1/2"	1.900	2.50	4.60	1.42	1.25	PHHW1.5P304SAN	PHHW1.5P304SLN
1 1/2"	1.900	2.70	4.60	1.42	1.35	PHHWH1.5P304SAN **	PHHWH1.5P304SLN **
2"	2.375	3.00	5.10	1.42	1.50	PHHW2.0P304SAN	PHHW2.0P304SLN
2 1/2"	2.875	3.50	5.60	1.42	1.75	PHHW2.5P304SAN	PHHW2.5P304SLN
3"	3.500	4.13	6.33	1.42	2.06	PHHW3.0P304SAN	PHHW3.0P304SLN
4"	4.500	5.12	7.52	1.42	2.65	PHHW4.0P304SAN	PHHW4.0P304SLN
6"	6.625	7.20	9.25	1.74	3.31	PHHW6.0P304SAN	PHHW6.0P304SLN

\*\* PHHWH's Hardware Frames are 7 Gauge 0.1874" - The increased thickness is preferred by some on site welders.

\* Lock Nuts for lines with vibration