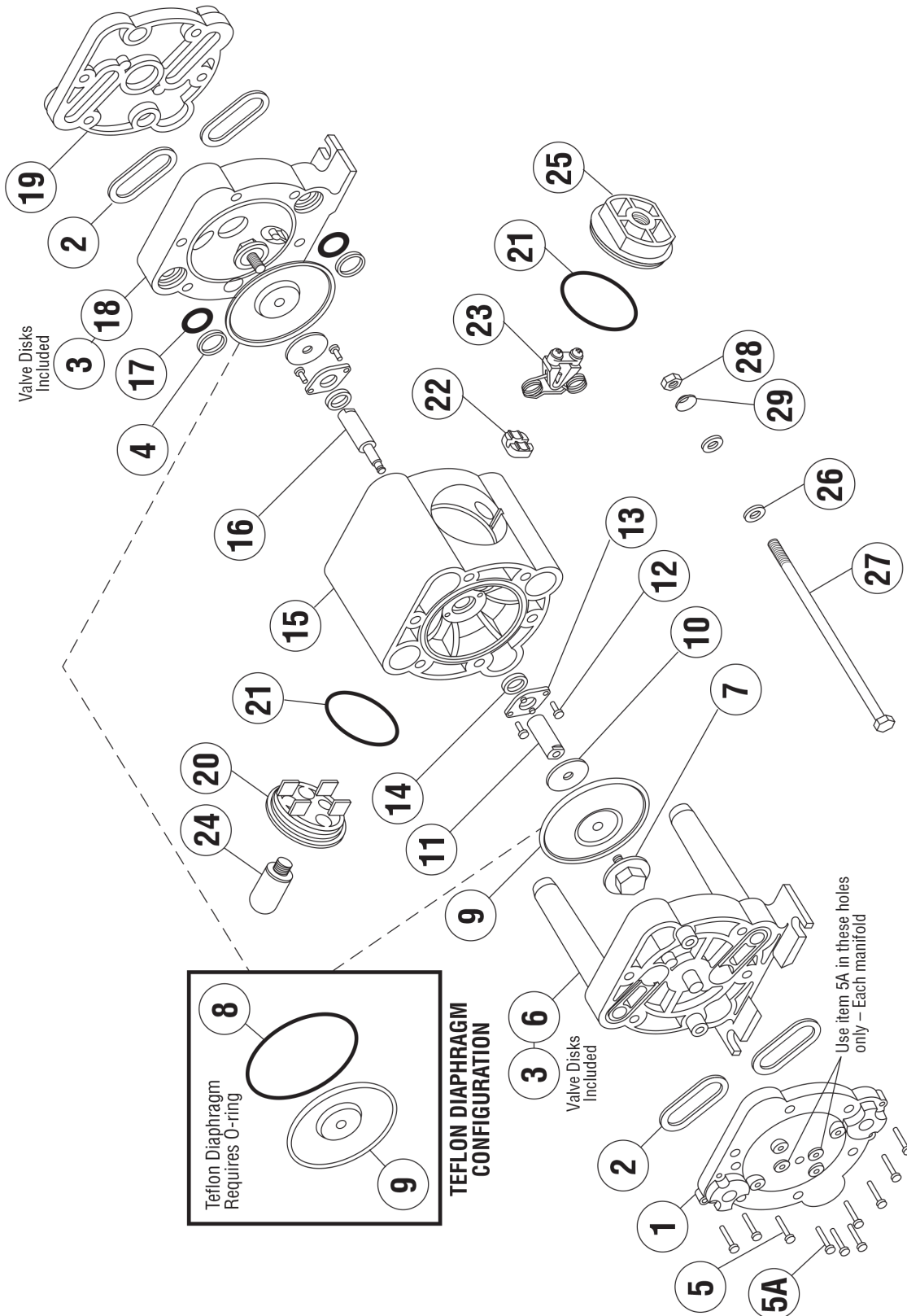


# EXPLODED VIEW & PARTS LIST

A025-SQ\*-\*\*\*\*\*-\*\*\* BOX PLASTIC



# PARTS LIST - BOX PLASTIC

## A025-SQ\*-\*\*\*\*-\*\*\*

ITEM	DESCRIPTION	QTY	PUMP MODEL	PART NO.	MATERIAL
1	LEFT MANIFOLD	1	A025-SQP-****-***	10503-40	Polypropylene
			A025-SQY-****-***	10503-46	Conductive Nylon
			A025-SQK-****-***	10503-56	PVDF
2	MANIFOLD, GASKET	4	A025-SQ*-***N-***	11936-11	Nitrile
			A025-SQ*-***V-***	11936-13	Viton®/FKM
			A025-SQ*-***E-***	11936-15	EPDM
			A025-SQ*-***T-***	12111-59	PTFE
3	VALVE DISC (Included in item 6 & 18. Cannot be ordered separately.)	4	ALL MODELS	11006-59	PTFE
4	O-RING RETAINER	2	ALL MODELS	12711-60	Polypropylene
5	SCREW (#8 X 1-1/4")	16	ALL MODELS (NON-PTFE COATED)	12524-26	Stainless Steel
5A	SCREW (#8 X 1")	4	ALL MODELS (NON-PTFE COATED)	12525-26	Stainless Steel
6	LEFT CHAMBER	1	A025-SQP-****-***	10714-40	Polypropylene
			A025-SQY-****-***	10714-46	Conductive Nylon
			A025-SQK-****-***	10714-56	PVDF
7	OUTER DIAPHRAGM PLATE	2	A025-SQP-****-***	11205-40	Polypropylene
			A025-SQY-****-***	11205-46	Conductive Nylon
			A025-SQK-****-***	11205-56	PVDF
8	O-RING (Diaphragm, PTFE ONLY)	2	A025-SQ*-T***-***	10606-23	Santoprene®
9	DIAPHRAGM	2	A025-SQ*-G***-***	10604-19	Geolast®
			A025-SQ*-S***-***	10604-23	Santoprene®
			A025-SQ*-T***-***	10604-59	PTFE
10	INNER DIAPHRAGM PLATE	2	ALL MODELS	11105-25	Plated Steel
11	DIAPHRAGM ROD (Short)	1	ALL MODELS	*	Stainless Steel
12	SCREW (#6 X 1/2")	4	ALL MODELS	12510-26	Stainless Steel
13	SEAL RETAINER	2	ALL MODELS	12710-60	Polypropylene
14	LIP SEAL	2	ALL MODELS	12000-76	Nitrile
15	INTERMEDIATE	1	ALL MODELS	11508-60	Polypropylene
16	DIAPHRAGM ROD (Long)	1	ALL MODELS	*	Stainless Steel
17	O-RING (Manifold Tube)	2	A025-SQ*-***N-***	11928-11	Nitrile
			A025-SQ*-***V-***	11928-13	Viton®/FKM
			A025-SQ*-***E-***	11928-15	EPDM
			A025-SQ*-***T-***	11928-17	PTFE
18	RIGHT CHAMBER	1	A025-SQP-****-***	10715-40	Polypropylene
			A025-SQY-****-***	10715-46	Conductive Nylon
			A025-SQK-****-***	10715-56	PVDF
19	RIGHT MANIFOLD	1	A025-SQP-****-***	10513-40	Polypropylene
			A025-SQY-****-***	10513-46	Conductive Nylon
			A025-SQK-****-***	10715-56	PVDF
20	MUFFLER CAP	1	ALL MODELS	13108-60	Polypropylene
21	O-RING (Caps)	2	ALL MODELS	11909-11	Nitrile
22	SHUTTLE	1	ALL MODELS	10411-00	Special
23	SPRING CLIP ASSY	1	ALL MODELS	51000-00	Various
24	MUFFLER	1	ALL MODELS	13003-00	Special
25	AIR INLET CAP	1	ALL MODELS	13109-60	Polypropylene

# PARTS LIST - BOX PLASTIC

## A025-SQ\*-\*\*\*\*-\*\*\*

ITEM	DESCRIPTION	QTY	PUMP MODEL	PART NO.	MATERIAL
26	FLAT WASHER (1/4")	12	ALL MODELS (NON-PTFE COATED)	12300-26	Stainless Steel
27	CAP SCREW (1/4" x 7-5/8")	6	ALL MODELS (NON-PTFE COATED)	12517-26	Stainless Steel
28	HEX NUT (1/4" - 20)	6	ALL MODELS (NON-PTFE COATED)	12600-26	Stainless Steel
29	WASHER, TENSION (1/4")	6	ALL MODELS (NON-PTFE COATED)	12305-26	Stainless Steel

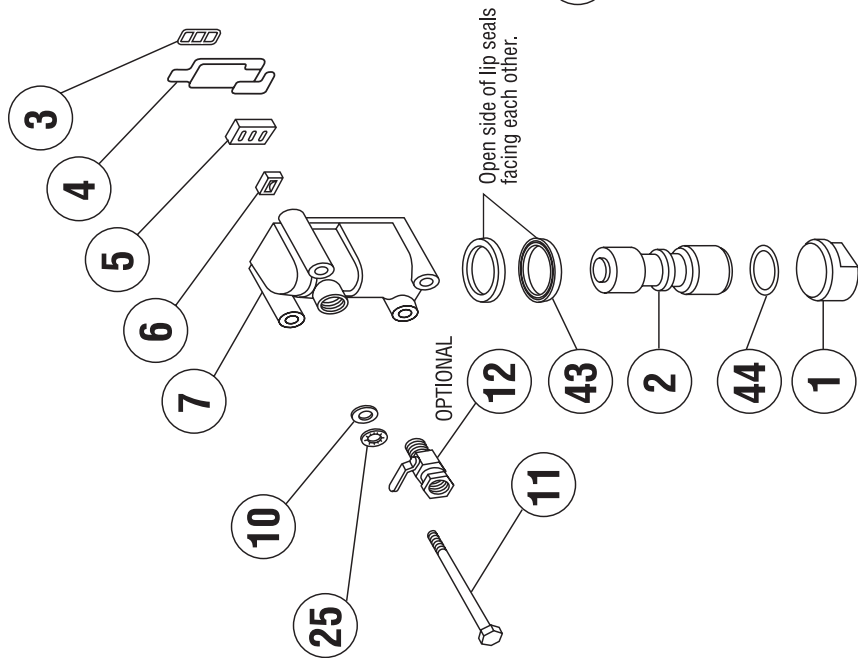
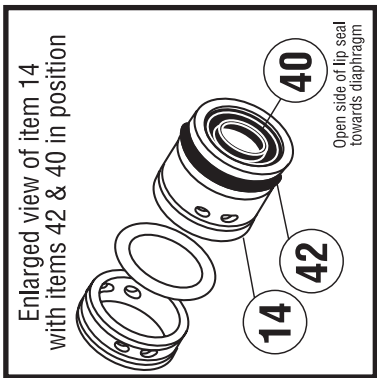
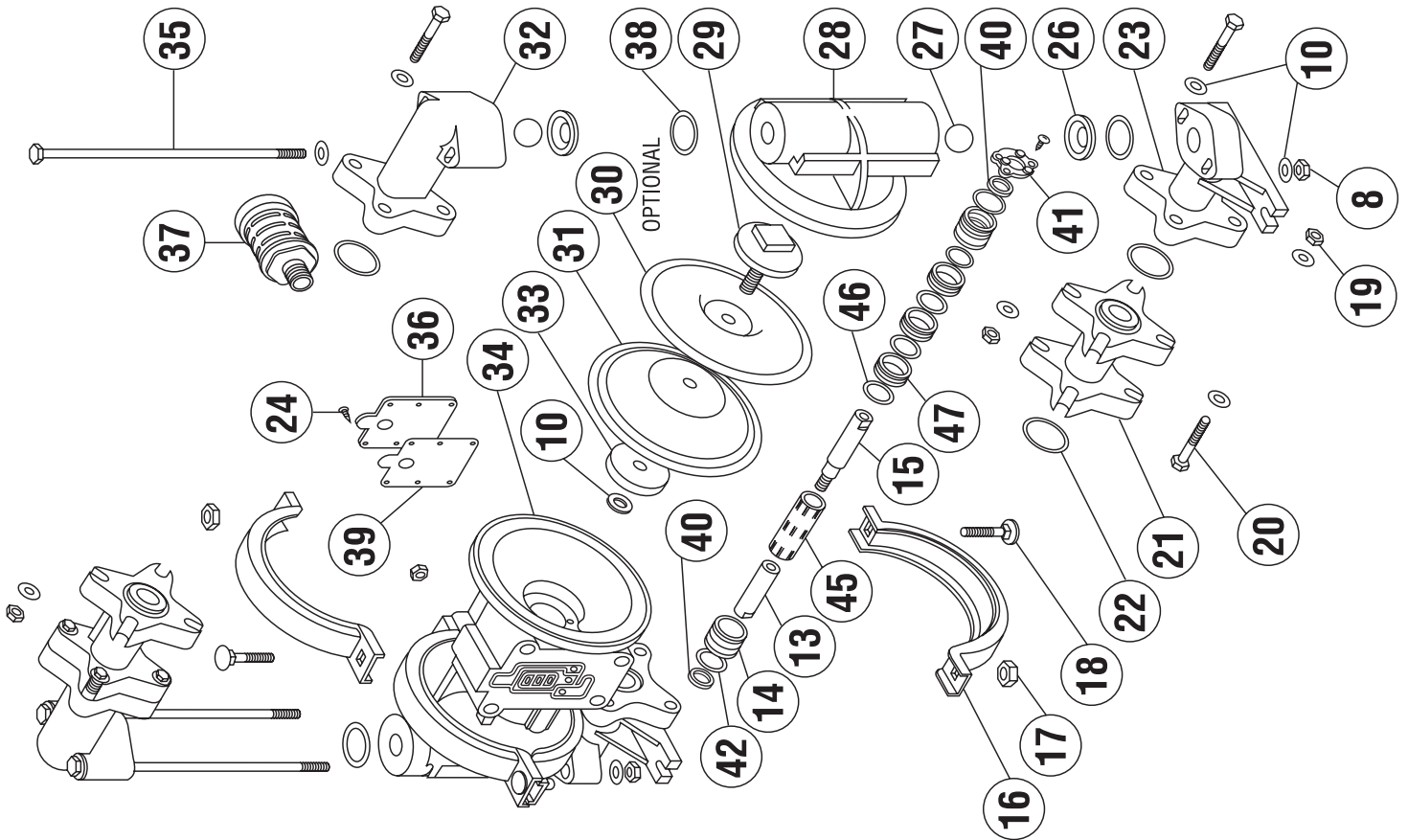
\* Any Character

\* NOTE: DIAPHRAGM ROD CAN ONLY BE PURCHASED AS AN ASSEMBLY.

DIAPHRAGM ROD ASSEMBLY	1	ALL MODELS	39000-00	Stainless Steel
Items 11 & 16				

# EXPLODED VIEW & PARTS LIST

C050-SP\*-\*\*\*\*-\*\*\* CLAMPED PLASTIC



# PARTS LIST - CLAMPED PLASTIC

## C050-SP\*\_\*\*\*\*\_\*\*\*

ITEM	DESCRIPTION	QTY	PUMP MODEL	PART NO.	MATERIAL
1	AIR VALVE END PLUG	1	ALL MODELS	11703-60	Polypropylene
2	AIR VALVE SPOOL	1	ALL MODELS	10407-31	Acetal
3	GASKET, INNER	1	ALL MODELS	12103-11	Geolast®
4	GASKET, OUTER	1	ALL MODELS	12109-11	Geolast®
5	SHUTTLE PLATE	1	ALL MODELS	10403-77	Ceramic
6	SHUTTLE	1	ALL MODELS	10409-00	Special
7	AIR VALVE BODY	1	ALL MODELS	11608-60	Polypropylene
8	LOCK NUT (1/4" - 20)	4	ALL MODELS (NON-PTFE COATED)	12600-38	Stainless Steel
10	FLAT WASHER	46	ALL MODELS (NON-PTFE COATED)	12300-26	Stainless Steel
11	CAP SCREW (1/4" X 4-1/2")	4	ALL MODELS (NON-PTFE COATED)	12513-26	Stainless Steel
12	AIR FLOW CONTROL VALVE (Optional)	1	OPTIONAL	13400-30 13408-51	Brass PVC
13	DIAPHRAGM ROD, SHORT	1	ALL MODELS	*	Stainless Steel
14	END SPACER, PILOT SLEEVE	2	ALL MODELS	10204-40	Polypropylene
15	DIAPHRAGM ROD, LONG	1	ALL MODELS	*	Stainless Steel
16	CLAMPS (Complete with fasteners)	2	ALL MODELS (NON-PTFE COATED)	12900-26	Stainless Steel
17	HEX NUT (5/16" - 18)	4	ALL MODELS (NON-PTFE COATED)	12601-26	Stainless Steel
18	CARRIAGE BOLT (5/16" X 1-1/2")	4	ALL MODELS (NON-PTFE COATED)	12509-26	Stainless Steel
19	HEX NUT (1/4" - 20)	20	ALL MODELS (NON-PTFE COATED)	12600-26	Stainless Steel
20	CAP SCREW (1/4" X 1-3/4")	16	ALL MODELS (NON-PTFE COATED)	12500-26	Stainless Steel
21	MANIFOLD, SINGLE PORT (NPT/BSP compatible)	2	C050-SPP-****-*** C050-SPK-****-***	10500-40 10500-56	Polypropylene PVDF
	MANIFOLD, DUAL PORTS (Optional) (NPT/BSP compatible)		C050-ZPP-****-***; Z = 2, 4, 6 C050-ZPK-****-***; Z = 2, 4, 6	10501-40 10501-56	Polypropylene PVDF
22	O-RING, MANIFOLD	4	C050-SP*-***N-*** C050-SP*-***V-*** C050-SP*-***E-*** C050-SP*-***T-***	11905-11 11905-13 11905-15 11905-17	Nitrile Viton®/FKM EPDM PTFE
23	SUCTION ELBOW	2	C050-SPP-****-*** C050-SPK-****-***	10800-40 10800-56	Polypropylene PVDF
24	SCREW (#6 X 1/2")	12	ALL MODELS (NON-PTFE COATED)	12510-26	Stainless Steel
25	LOCK WASHER	4	ALL MODELS (NON-PTFE COATED)	12350-26	Stainless Steel
26	VALVE SEAT	4	C050-SP*-**3*-*** C050-SP*-**P*-*** C050-SP*-**K*-***	10900-26 10900-40 10900-56	Stainless Steel Polypropylene PVDF
27	BALL	4	C050-SP*-*V**-*** C050-SP*-*G**-*** C050-SP*-*S**-*** C050-SP*-*3**-*** C050-SP*-*T**-***	11000-13 11000-19 11000-23 11000-26 11000-45	Viton®/FKM Geolast® Santoprene® Stainless Steel PTFE
28	OUTER CHAMBER	2	C050-SPP-****-*** C050-SPK-****-***	10700-40 10700-56	Polypropylene PVDF
29	OUTER DIAPHRAGM PLATE	2	C050-SPP-****-*** C050-SPK-****-***	11200-40 11200-56	Polypropylene PVDF
30	OVERLAY	2	C050-SP*-T***-***	11400-59	PTFE

# PARTS LIST - CLAMPED PLASTIC

## C050-SP\*\_\*\*\*\*\_\*\*\*

ITEM	DESCRIPTION	QTY	PUMP MODEL	PART NO.	MATERIAL
31	DIAPHRAGM	2	C050-SP*_V***_***	10600-13	Viton®/FKM
			C050-SP*_G***_***	10600-19	Geolast®
			C050-SP*_S***_***	10600-23	Santoprene®
			C050-SP*_T***_***	10600-23	Santoprene®
32	DISCHARGE ELBOW	2	C050-SPP-****_***	11300-40	Polypropylene
			C050-SPK-****_***	11300-56	PVDF
33	INNER DIAPHRAGM PLATE	2	C050-SPP-****_***	11100-40	Polypropylene
			C050-SPK-****_***	11100-56	PVDF
34	INTERMEDIATE	1	ALL MODELS	11516-60	Polypropylene
35	CAP SCREW (1/4" X 8")	4	ALL MODELS (NON-PTFE COATED)	12502-26	Stainless Steel
36	MUFFLER PLATE	1	ALL MODELS	13100-60	Polypropylene
37	MUFFLER	1	ALL MODELS	13008-00	Polypropylene
38	O-RING, VALVE SEAT	4	C050-SP*_***N-***	11904-11	Nitrile
			C050-SP*_***V-***	11904-13	Viton®/FKM
			C050-SP*_***E-***	11904-15	EPDM
			C050-SP*_***T-***	11904-17	PTFE
39	GASKET, MUFFLER PLATE	1	ALL MODELS	12105-10	Nitrile Fiber
40	LIP SEAL, DIAPHRAGM ROD	2	ALL MODELS	12000-76	Nitrile
41	RETAINING PLATE	2	ALL MODELS	12708-54	Nylon
42	O-RING, END SPACER	2	ALL MODELS	11923-11	Nitrile
43	LIP SEAL, AIR VALVE	2	ALL MODELS	12003-76	Nitrile
44	O-RING, VALVE PLUG	1	ALL MODELS	11913-11	Nitrile
45	PILOT SLEEVE	1	ALL MODELS	10105-31	Acetal
46	O-RING, PILOT SLEEVE	4	ALL MODELS	11920-16	Urethane
47	INNER SPACER, PILOT SLEEVE	3	ALL MODELS	10203-40	Polypropylene

\* Any Character

\* NOTE: DIAPHRAGM ROD CAN ONLY BE PURCHASED AS AN ASSEMBLY.

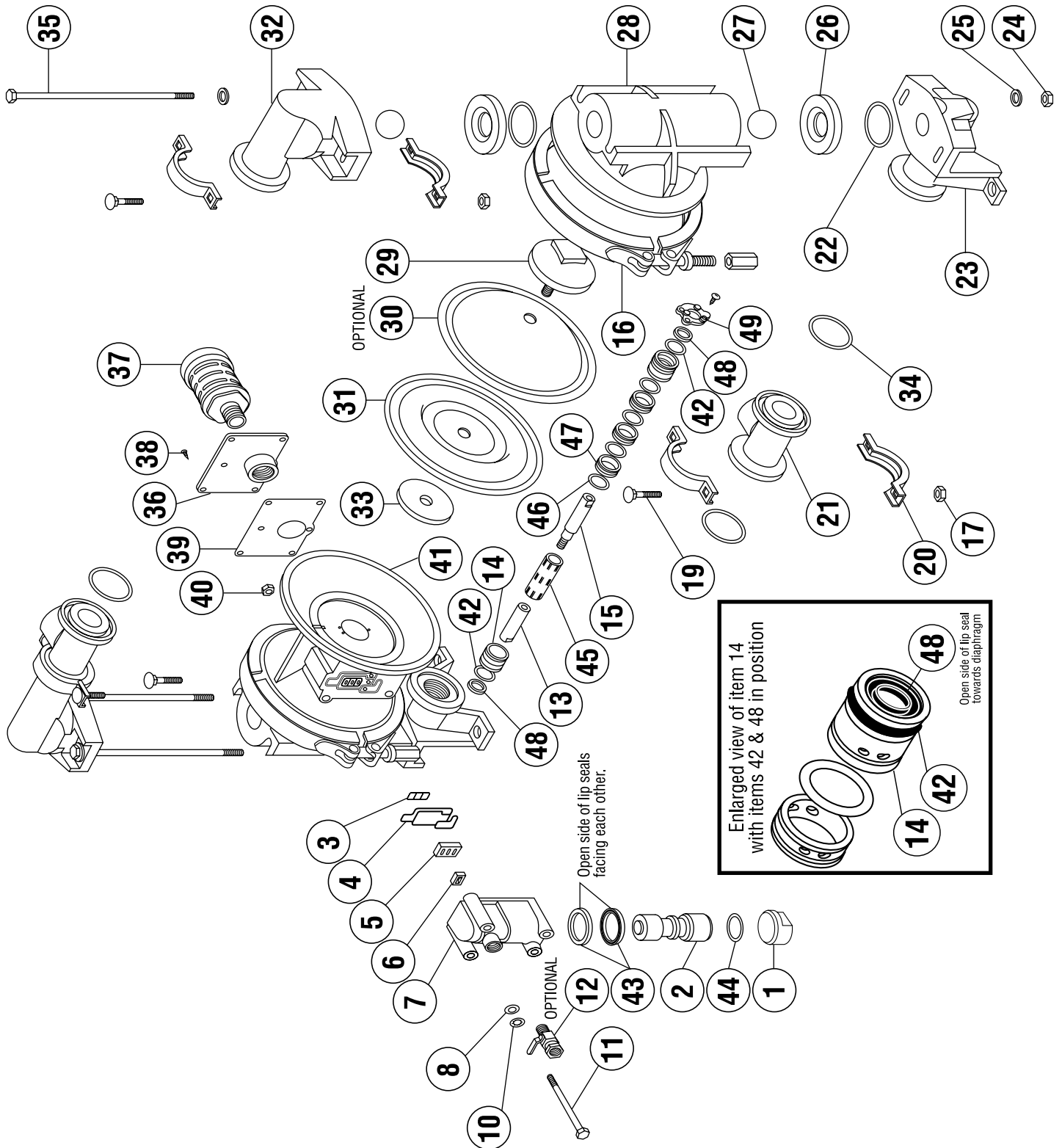
DIAPHRAGM ROD ASSEMBLY Items 13 & 15	1	ALL MODELS	33000-00	Stainless Steel
---	---	------------	----------	-----------------

### OPTIONAL ASSEMBLIES AVAILABLE

MAIN AIR VALVE ASSEMBLY Includes items 1 thru 7 and 43, 44	1	ALL MODELS	CMK-050-P	Various
PILOT VALVE ASSEMBLY Includes items 14, 40, 42, 45, 46, 47	1	ALL MODELS	CPK-050-P	Various

# EXPLODED VIEW & PARTS LIST

C100-SP\*\_\*\*\*\*\_\*\*\* CLAMPED PLASTIC



# PARTS LIST - CLAMPED PLASTIC

## C100-\*P\*-\*-\*-\*\*\*-\*\*\*

ITEM	DESCRIPTION	QTY	PUMP MODEL	PART NO.	MATERIAL
1	AIR VALVE END PLUG	1	ALL MODELS	11703-60	Polypropylene
2	AIR VALVE SPOOL	1	ALL MODELS	10407-31	Acetal
3	GASKET, INNER	1	ALL MODELS	12103-11	Nitrile
4	GASKET, OUTER	1	ALL MODELS	12109-11	Nitrile
5	SHUTTLE PLATE	1	ALL MODELS	10403-77	Ceramic
6	SHUTTLE	1	ALL MODELS	10409-00	Special
7	AIR VALVE BODY	1	ALL MODELS	11608-60	Polypropylene
8	FLAT WASHER (1/4")	4	ALL MODELS (NON-PTFE COATED)	12300-26	Stainless Steel
10	LOCK WASHER (1/4")	4	ALL MODELS (NON-PTFE COATED)	12350-26	Stainless Steel
11	CAP SCREW (1/4" X 5")	4	ALL MODELS (NON-PTFE COATED)	12512-26	Stainless Steel
12	AIR FLOW CONTROL (Optional)	1	OPTIONAL	13400-30 13408-51	Brass PVC
13	DIAPHRAGM ROD (Short)	1	ALL MODELS	*	Stainless Steel
14	END SPACER (Pilot Sleeve)	2	ALL MODELS	10204-40	Polypropylene
15	DIAPHRAGM ROD (Long)	1	ALL MODELS	*	Stainless Steel
16	CLAMP, CHAMBER (Complete with fasteners)	2	ALL MODELS (NON-PTFE COATED)	12902-26	Stainless Steel
17	HEX NUT (5/16" - 18)	8	ALL MODELS (NON-PTFE COATED)	12601-26	Stainless Steel
19	CARRIAGE BOLT (5/16" X 1-1/2")	8	ALL MODELS (NON-PTFE COATED)	12509-26	Stainless Steel
20	CLAMP, MANIFOLD (Complete with fasteners)	4	ALL MODELS (NON-PTFE COATED)	12903-26	Stainless Steel
21	MANIFOLD, NPT THREADS	2	C100-NPP-*-*-*** C100-NPK-*-*-***	10506-40 10506-56	Polypropylene PVDF
	MANIFOLD, BSP THREADS		C100-BPP-*-*-*** C100-BPK-*-*-***	10509-40 10509-56	Polypropylene PVDF
22	O-RING (Valve Seat)	4	C100-*PP-*-*N-*-* C100-*PP-*-*V-*-* C100-*PP-*-*E-*-* C100-*PK-*-*V-*-* C100-*PK-*-*E-*-* C100-*PK-*-*T-*-*	11910-11 11910-13 11910-15 11912-13 11912-15 11912-17	Nitrile Viton®/FKM EPDM Viton®/FKM EPDM PTFE
		4 EA	C100-*PP-*-*T-*-* (Twin O-Rings)	11946-17	PTFE
		4 EA	C100-*PP-*-*T-*-* (Twin O-Rings)	11953-17	PTFE
23	SUCTION ELBOW	2	C100-*PP-*-*-*** C100-*PK-*-*-***	10801-40 10801-56	Polypropylene PVDF
24	HEX NUT (3/8" - 16)	4	ALL MODELS (NON-PTFE COATED)	12602-26	Stainless Steel
25	FLAT WASHER (3/8")	8	ALL MODELS (NON-PTFE COATED)	12303-26	Stainless Steel
26	VALVE SEAT	4	C100-*P*-*3*-*-* C100-*P*-*P*-*-* C100-*P*-*K*-*-* C100-*PP-*PT-*-* (Twin O-Rings)	10901-26 10901-40 10901-56 10931-40	Stainless Steel Polypropylene PVDF Polypropylene
27	BALL	4	C100-*P*-*V**-*-* C100-*P*-*G**-*-* C100-*P*-*S**-*-* C100-*P*-*3**-*-* C100-*P*-*T**-*-*	11002-13 11002-19 11002-23 11002-26 11002-45	Viton®/FKM Geolast® Santoprene® Stainless Steel PTFE



# PARTS LIST - CLAMPED PLASTIC

## C100-\*P\*-\*\*\*\*-\*\*\*

ITEM	DESCRIPTION	QTY	PUMP MODEL	PART NO.	MATERIAL
28	OUTER CHAMBER	2	C100-*PP*-****-***	10702-40	Polypropylene
			C100-*PK*-****-***	10702-56	PVDF
29	OUTER DIAPHRAGM PLATE	2	C100-*PP*-****-***	11204-40	Polypropylene
			C100-*PK*-****-***	11204-56	PVDF
30	OVERLAY (PTFE ONLY)	2	C100-*P*-T***-***	11406-59	PTFE
31	DIAPHRAGM	2	C100-*P*-V***-***	10605-13	Viton®/FKM
			C100-*P*-G***-***	10605-19	Geolast®
			C100-*P*-S***-***	10605-23	Santoprene®
			C100-*P*-T***-***	10605-23	Santoprene®
32	DISCHARGE MANIFOLD	1	C100-*PP*-****-***	11301-40	Polypropylene
			C100-*PK*-****-***	11301-56	PVDF
33	INNER DIAPHRAGM PLATE	2	ALL MODELS	11104-25	Plated Steel
34	O-RING (Manifold)	4	C100-*P*-***N-***	11912-11	Nitrile
			C100-*P*-***V-***	11912-13	Viton®/FKM
			C100-*P*-***E-***	11912-15	EPDM
			C100-*P*-***T-***	11912-17	PTFE
35	CAP SCREW (3/8" X 9 - 1/2")	4	ALL MODELS (NON-PTFE COATED)	12508-26	Stainless Steel
36	MUFFLER PLATE	1	ALL MODELS	13102-60	Polypropylene
37	MUFFLER	1	ALL MODELS	13007-00	Polypropylene
38	SCREW (#6 X 1/2")	12	ALL MODELS (NON-PTFE COATED)	12510-26	Stainless Steel
39	GASKET (Muffler Plate)	1	ALL MODELS	12102-10	Nitrile Fiber
40	HEX NUT (1/4" - 20)	4	ALL MODELS (NON-PTFE COATED)	12600-26	Stainless Steel
41	INTERMEDIATE	1	ALL MODELS	11517-60	Polypropylene
42	O-RING (End Spacer)	2	ALL MODELS	11923-11	Nitrile
43	LIP SEAL (Air Valve)	2	ALL MODELS	12003-76	Nitrile
44	O-RING (Air Valve End Plug)	1	ALL MODELS	11913-11	Nitrile
45	PILOT SLEEVE	1	ALL MODELS	10105-31	Acetal
46	O-RING (Pilot Sleeve)	4	ALL MODELS	11920-16	Urethane
47	INNER SPACER (Pilot Sleeve)	3	ALL MODELS	10203-40	Polypropylene
48	LIP SEAL (Diaphragm Rod)	2	ALL MODELS	12000-76	Nitrile
49	RETAINING PLATE	2	ALL MODELS	12708-54	Polypropylene

\* Any Character

\* NOTE: DIAPHRAGM ROD CAN ONLY BE PURCHASED AS AN ASSEMBLY.

DIAPHRAGM ROD ASSEMBLY Items 13 & 15	1	ALL MODELS	32000-00	Stainless Steel
---	---	------------	----------	-----------------

### OPTIONAL ASSEMBLIES AVAILABLE

AIR VALVE ASSEMBLY Items 1 thru 7, 43, 44	1	ALL MODELS	CMK-100-P	Various
--	---	------------	-----------	---------

PILOT VALVE ASSEMBLY Items 14, 42, 45, 46, 47, 48	1	ALL MODELS	CPK-100-P	Various
--	---	------------	-----------	---------