

Butterfly Valve Parts List

Elastomer Options

Actuator Elastomers: Buna

Valve Wetted Parts:

Seal Options Silicone, EPDM, Viton®

Stem Bushings PTFE

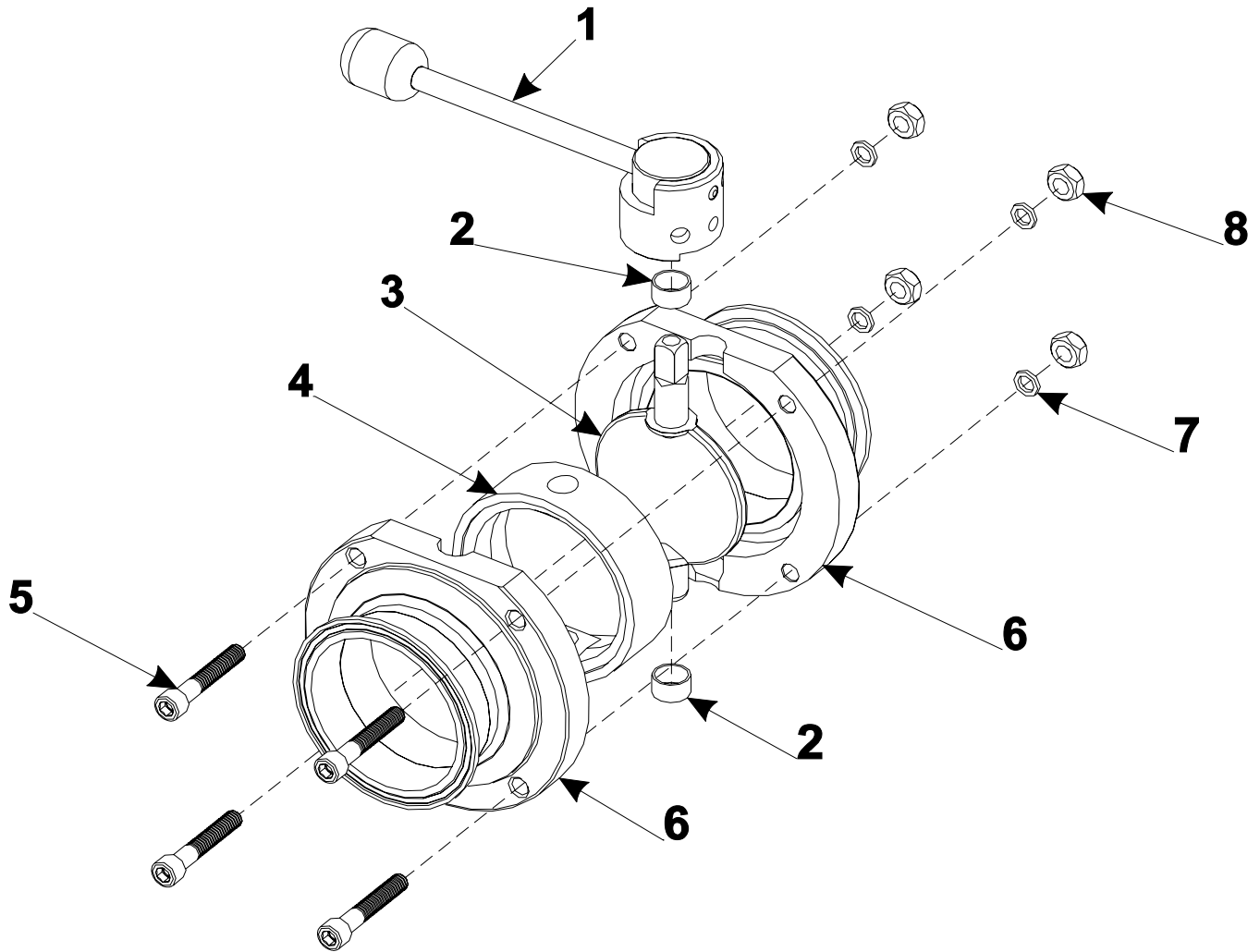
Seat Material Selection

Silicone- FDA grade silicone exhibits a wish list of characteristics including superb chemical resistance, high temperature performance, good thermal and electrical resistance, long-term resiliency, and easy fabrication. It also possesses excellent UV and ozone resistance. This material is low volatile, peroxide free and does not discolor over time. Silicone is odorless, tasteless, chemically inert and non-toxic. It offers all FDA approved ingredients, low compression set and fungus resistance.

EPDM- Ethylene-propylene compounds are prepared from ethylene and propylene (EPM) and usually a third monomer (EPDM). These compounds are used frequently to seal in brake systems, and for sealing hot water and steam. Ethylene propylene compounds have good resistance to mild acids, detergents, alkalis, silicone oils and greases, ketones, and alcohols. They are not recommended for applications with petroleum oils, mineral oil, di-ester lubricants, or fuel exposure.

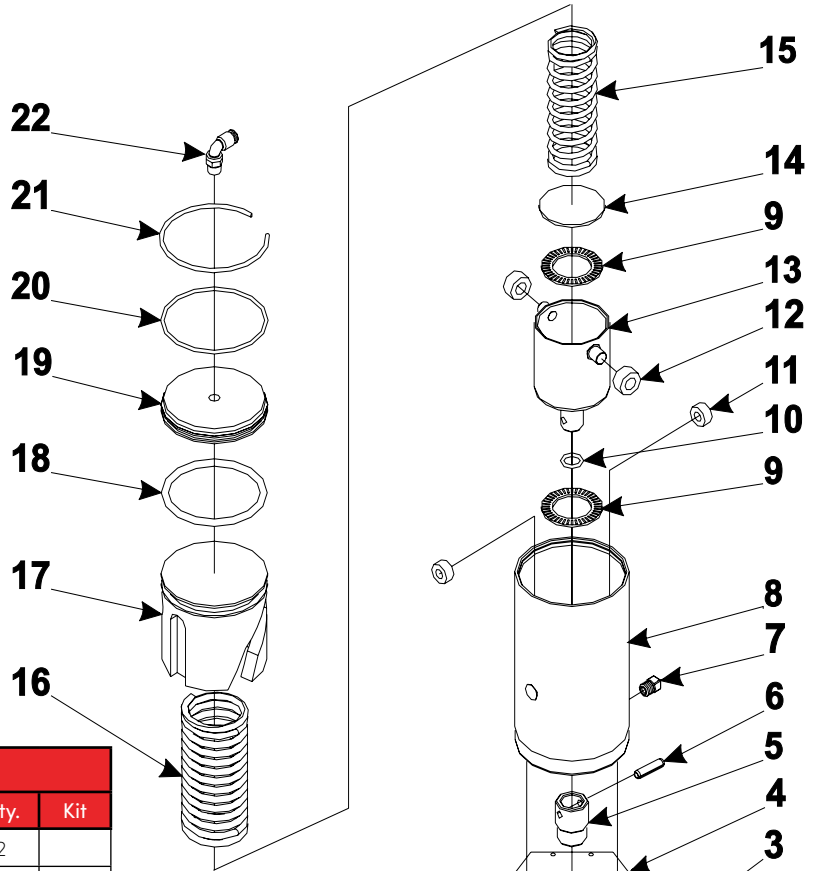
Viton®- Viton® offers excellent chemical resistance, especially to many acids and alkalis. Makes it the best choice for many pharmaceutical, chemical, automotive, or fuel applications. These gaskets are not recommended for sterilization.

\\ HAND OPERATED BUTTERFLY VALVE



Hand Operated Butterfly Valve			
Item #	Part #	Description	Qty.
1	10B-Size-H	Handle Assembly	1
2	10B-Size-2B	PTFE Stem Bushing	2
3	10B-Size-2	Disc & Stem	1
4	10B-Size-40S 10B-Size-40E 10B-Size-40V	Seat Silicone Seat EPDM Seat Viton®	1
5	10B-Size-1HX	Socket Head Bolt	4
6	SP10B-7-Size-1	Clamp Valve Body	2
7	10B-Size-1LW	Lock Washer	4
8	10B-Size-1N	Hex Nut	4

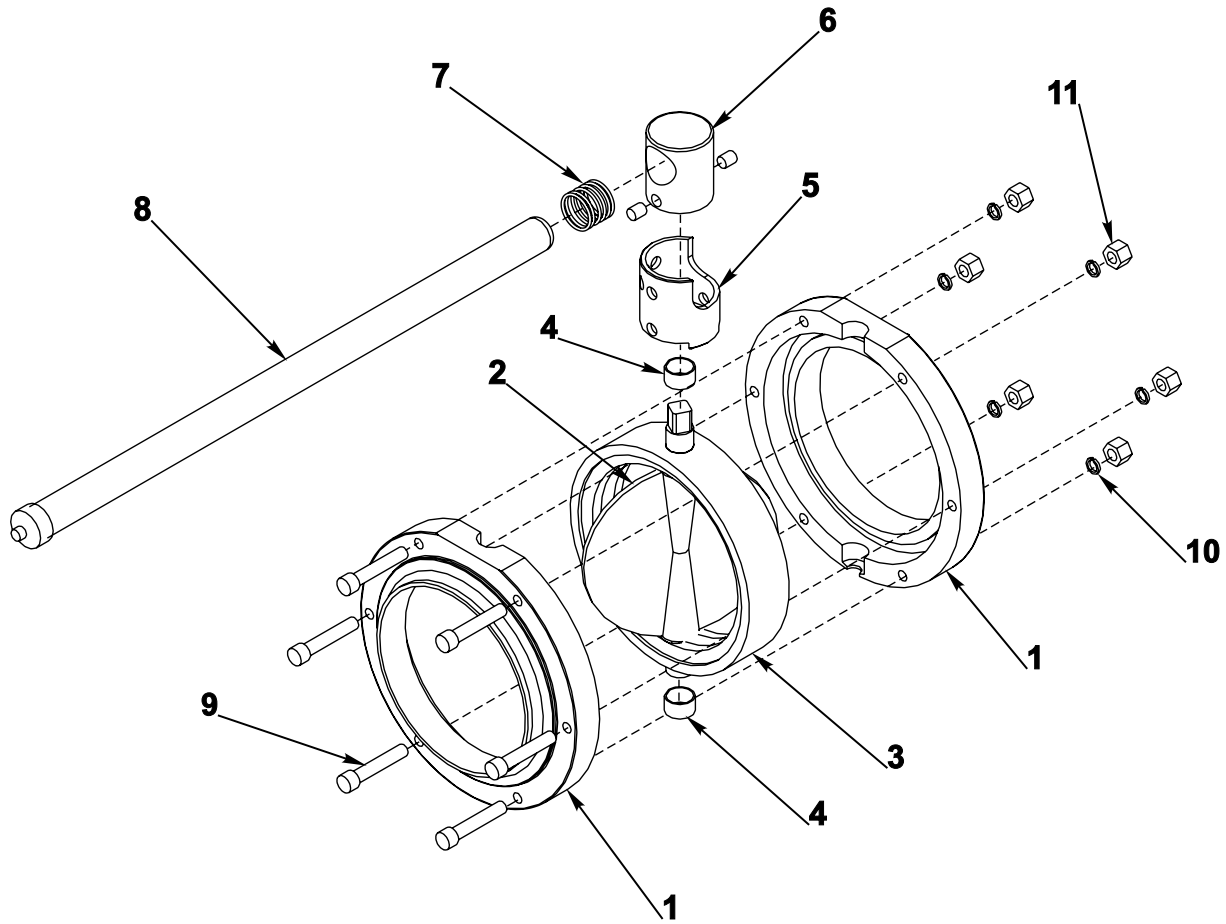
BUTTERFLY VALVE ACTUATOR



Butterfly Valve Actuator				
Item #	Part Number	Description	Qty.	Kit
1	SP20B-1.5-3B	BRACKET BOLT	2	
2	SP20B-1.5-3LW	LOCK WASHER	2	
3	SP20B-1.5-4CO	POSITION INDICATOR	1	
4	SP20B-1.5-3 SP20B-3-3	MOUNTING BRACKET 1.5-2.5" Valve MOUNTING BRACKET 3-4" Valve	1	
5	SP20B-1.5-4 SP20B-3-4	STEM DRIVER 1.5-2.5" Valve STEM DRIVER 3-4" Valve	1	
6	SP20B-1.5-4P	ROLL PIN	1	
7	SP10-15BV	FILTER PLUG	1	○
8	SP20B-1.5-1	CYLINDER BODY	1	
9	SP20B-1.5-5B	THRUST BEARING	2	○
10	SP20B-1.5-2DR	STEM O-RING	1	○
11	SP20B-1.5-1B	CYLINDER BEARING	2	○
12	SP20B-1.5-2DB	STEM BEARING	2	○
13	SP20B-1.5-2D	STEM ASSEMBLY	1	
14	SP20B-1.5-5BP	THRUST BEARING PLATE	1	○
15	SP20B-1.5-5S	INNER SPRING	1	○
16	SP20B-1.5-5L	OUTER SPRING	1	○
17	SP20B-1.5-2	PISTON	1	
18	SP20B-1.5-2R	PISTON O-RING	1	○
19	SP20B-1.5-1C	CYLINDER CAP	1	
20	SP20B-1.5-1C40	CYLINDER CAP O-RING	1	○
21	SP20B-1.5-1CR	SNAP RING	1	○
22	SP10-14 NBP	POLY-TUBE FITTING	1	○

○ Included in SP20B-RBK Actuator Service Kit

6-INCH BUTTERFLY VALVE



6-Inch Butterfly Valve			
Item #	Part Number	Description	Qty.
1	SP10B-7-6-1	Clamp Valve Body	2
2	10B-6-2	Stem and Disc	1
3	10B-6-40E	Valve Seat	1
4	10B-6-2B	Stem Bushing	2
5	10B-6-HBP	Handle Positioner	1
6	10B-6-HB	Handle Bonnet	1
7	SP51-80S	Handle Spring	1
8	10B-6-HR	Handle Stem	1
9	10B-6-1HX	Socket Head Bolts	6
10	10B-4-1LW	Lock Washer	6
11	10B-4-1N	Hex Nuts	6

Contact us for information on 6-inch air actuator options