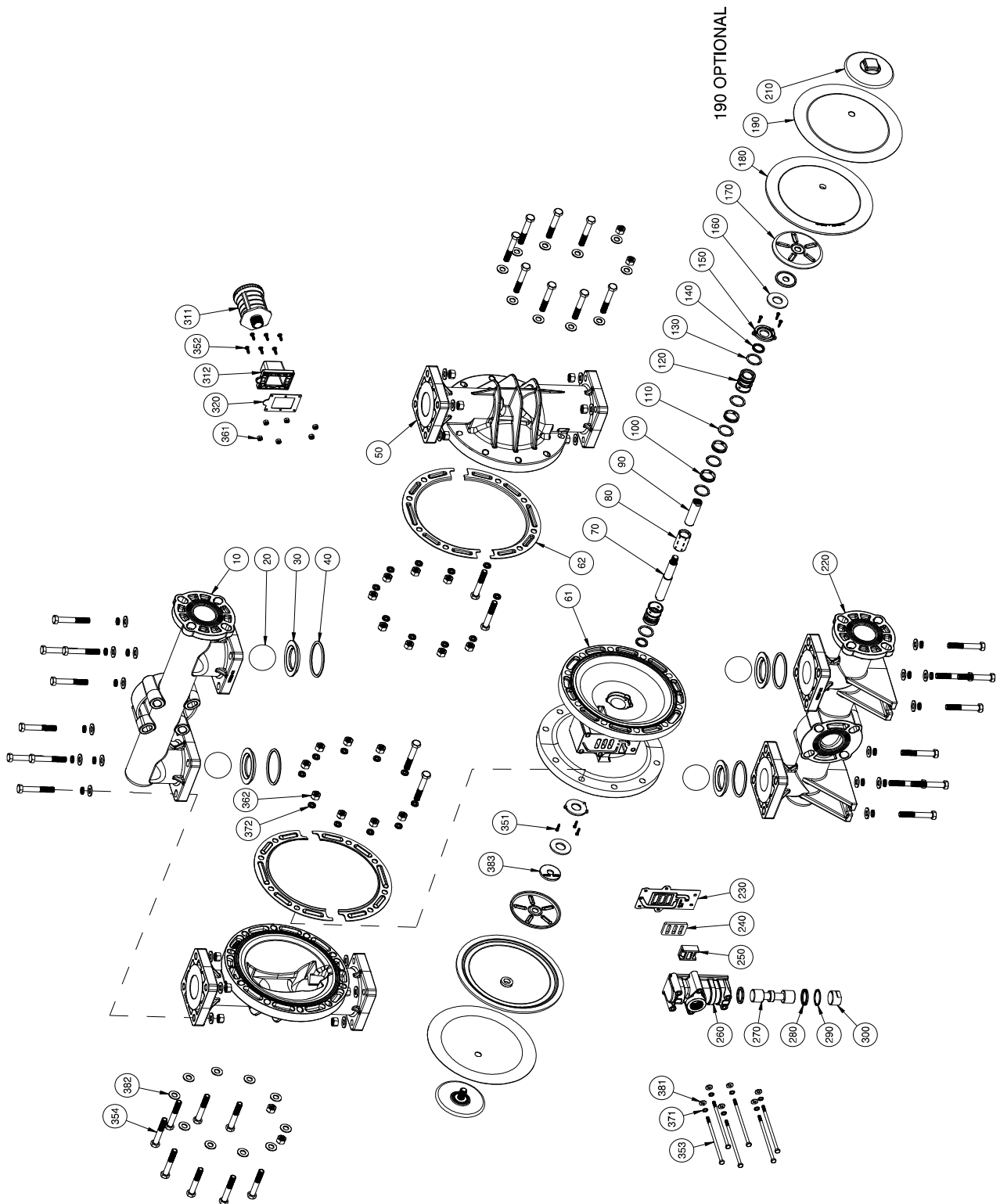


EXPLODED VIEW & PARTS LIST

A200-FP*-****-*** BOLTED PLASTIC



PARTS LIST - BOLTED PLASTIC

A200-FP*_****_***

| NO. | DESCRIPTION | QTY | PUMP MODEL | PART NO. | MATERIAL |
|---------|--|-----|--|--|---|
| 10 | DISCHARGE MANIFOLD | 1 | A200-FPP-****_*** A200-FPK-****_*** | 10596-40-AF 10596-56-AF | Polypropylene PVDF |
| 20 | BALL | 4 | A200-FP*_V**_*** A200-FP*_E**_*** A200-FP*_G**_*** A200-FP*_N**_*** A200-FP*_S**_*** A200-FP*_T**_*** | 11009-13 † 11009-15 † 11009-19 † 11009-21 † 11009-23 † 11009-45 † | Viton®/FKM EPDM Geolast® Buna-N Santoprene® PTFE |
| 30 | VALVE SEAT | 4 | A200-FPP-**P*_*** A200-FPK-**K*_*** | 10925-39 † 10925-56 † | Polypropylene PVDF |
| 40 | O-RING (Valve Seat) | 4 | A200-FP*_***N-*** A200-FP*_***V-*** A200-FP*_***E-*** A200-FP*_***T-*** | 11917-11 † 11917-13 † 11917-15 † 11917-17 † | Nitrile Viton®/FKM EPDM PTFE |
| 50 | OUTER CHAMBER | 2 | A200-FPP-****_*** A200-FPK-****_*** | 10729-40 10729-56 | Polypropylene PVDF |
| 61 | INTERMEDIATE | 1 | ALL MODELS | 111524-60 | Polypropylene |
| 62 | POWER RING (Set) | 2 | ALL MODELS (NON-PTFE COATED) | 12812-26 | Stainless Steel |
| 70 & 90 | DIAPHRAGM ROD ASSEMBLY | 1 | ALL MODELS | 35000-00 | Stainless Steel |
| 80 | PILOT SLEEVE | 1 | ALL MODELS | 10106-31 Δ | Acetal |
| 100 | INNER SPACER (Pilot Sleeve) | 3 | ALL MODELS | 10205-40 Δ | Polypropylene |
| 110 | O-RING (Pilot Sleeve) | 4 | ALL MODELS | 11919-16 Δ | Urethane |
| 120 | END SPACER (Pilot Sleeve) | 2 | ALL MODELS | 10206-40 Δ | Polypropylene |
| 130 | O-RING (End Spacer) | 2 | ALL MODELS | 11919-11 Δ | Nitrile |
| 140 | LIP SEAL (Diaphragm Rod) | 2 | ALL MODELS | 12002-76 Δ | Nitrile |
| 150 | RETAINING PLATE | 2 | ALL MODELS | 12709-54 | Nylon |
| 160 | BUMPER | 2 | ALL MODELS | 12317-16 | Urethane |
| 170 | INNER DIAPHRAGM PLATE | 2 | ALL MODELS | 11103-25 | Plated Steel |
| 180 | DIAPHRAGM | 2 | A200-FP*_V***_*** A200-FP*_G***_*** A200-FP*_S***_*** A200-FP*_T***_*** | 10603-13 † 10603-19 † 10603-23 † 10603-23 † | Viton®/FKM Geolast® Santoprene Santoprene |
| 190 | OVERLAY (PTFE ONLY) | 2 | A200-FP*_T***_*** | 11403-59 † | PTFE |
| 200 | N/A | | | | |
| 210 | OUTER DIAPHRAGM PLATE W/ THREADED STUD | 2 | A200-FPP-****_*** A200-FPK-****_*** | 11203-40 11203-56 | Polypropylene PVDF |
| 220 | SUCTION MANIFOLD | 1 | A200-FPP-****_*** A200-FPK-****_*** | 10597-40 10597-56 | Polypropylene PVDF |
| 230 | AIR VALVE GASKET | 1 | ALL MODELS | 12121-19 ‡ | Nitrile |
| 240 | SHUTTLE PLATE | 1 | ALL MODELS | 10450-77 ‡ | Ceramic |
| 250 | SHUTTLE | 1 | ALL MODELS | 10430-00 ‡ | Special |
| 260 | AIR VALVE BODY | 1 | ALL MODELS | 11617-60 ‡ | Polypropylene |
| 270 | AIR VALVE SPOOL | 1 | ALL MODELS | 10481-31 ‡ | Acetal |

PARTS LIST - BOLTED PLASTIC

A200-FP*_****_***

| NO. | DESCRIPTION | QTY | PUMP MODEL | PART NO. | MATERIAL |
|-----|--|-----|------------------------------|--------------|-----------------|
| 280 | LIP SEAL (Air Valve) | 2 | ALL MODELS | 12003-76 ‡ | Nitrile |
| 290 | O-RING (Valve Plug) | 1 | ALL MODELS | 11913-11 ‡ | Nitrile |
| 300 | AIR VALVE END PLUG | 1 | ALL MODELS | 11703-60 ‡ | Polypropylene |
| 311 | MUFFLER | 1 | ALL MODELS | 13001-00 | Polypropylene |
| 312 | MUFFLER PLATE | 1 | ALL MODELS | 13107-60 | Polypropylene |
| 320 | GASKET (Muffler Plate) | 1 | ALL MODELS | 12108-11 | Nitrile |
| 330 | N/A | | | | |
| 340 | N/A | | | | |
| 351 | SCREW (#6 x 3/4") | 6 | ALL MODELS | 12549-26 | Stainless Steel |
| 352 | SCREW (#8 x 1") | 6 | ALL MODELS (NON-PTFE COATED) | 12540-100-26 | Stainless Steel |
| 353 | SCREW, HEX HEAD CAP (1/4" - 20 x 6") | 6 | ALL MODELS (NON-PTFE COATED) | 12515-26 | Stainless Steel |
| 354 | SCREW, HEX HEAD CAP (1/2" - 13 x 3 1/4") | 36 | ALL MODELS (NON-PTFE COATED) | 12555-26 | Stainless Steel |
| 361 | NUT, HEX (1/4" - 20) | 6 | ALL MODELS (NON-PTFE COATED) | 12600-26 | Stainless Steel |
| 362 | NUT, HEX (1/2" - 13) | 36 | ALL MODELS (NON-PTFE COATED) | 12604-26 | Stainless Steel |
| 371 | WASHER, LOCK (1/4") | 6 | ALL MODELS (NON-PTFE COATED) | 12350-26 | Stainless Steel |
| 372 | WASHER, SPLIT LOCK (1/4") | 36 | ALL MODELS (NON-PTFE COATED) | 12323-26 | Stainless Steel |
| 381 | WASHER, FLAT (1/4") | 6 | ALL MODELS (NON-PTFE COATED) | 12300-26 | Stainless Steel |
| 382 | WASHER, FLAT (1/2") | 52 | ALL MODELS (NON-PTFE COATED) | 12306-26 | Stainless Steel |
| 383 | WASHER, FLAT (Rod Assembly) | 2 | ALL MODELS | 12315-25 | Plated Steel |
| 390 | N/A | | | | |
| 400 | N/A | | | | |

* Any Character

Δ, ‡, † Only sold as part of assembly

| ASSEMBLY PART NUMBERS | PUMP MODEL | PART NO. | MATERIAL |
|---|-------------------|----------------|----------|
| ‡ MAIN AIR VALVE ASSEMBLY 230, 240, 250, 260, 270, 280, 290, 300 | A200-FP*_****_*** | AMK-200-P | Various |
| Δ PILOT VALVE ASSEMBLY 80, 100, 110, 120, 130, 140 | A200-FP*_****_*** | APK-200-P | Various |
| † WET END REPAIR KIT 20, 30, 40, 180, 190 (PTFE Only) | A200-FP*_****_*** | AWE-200-****-P | Various |