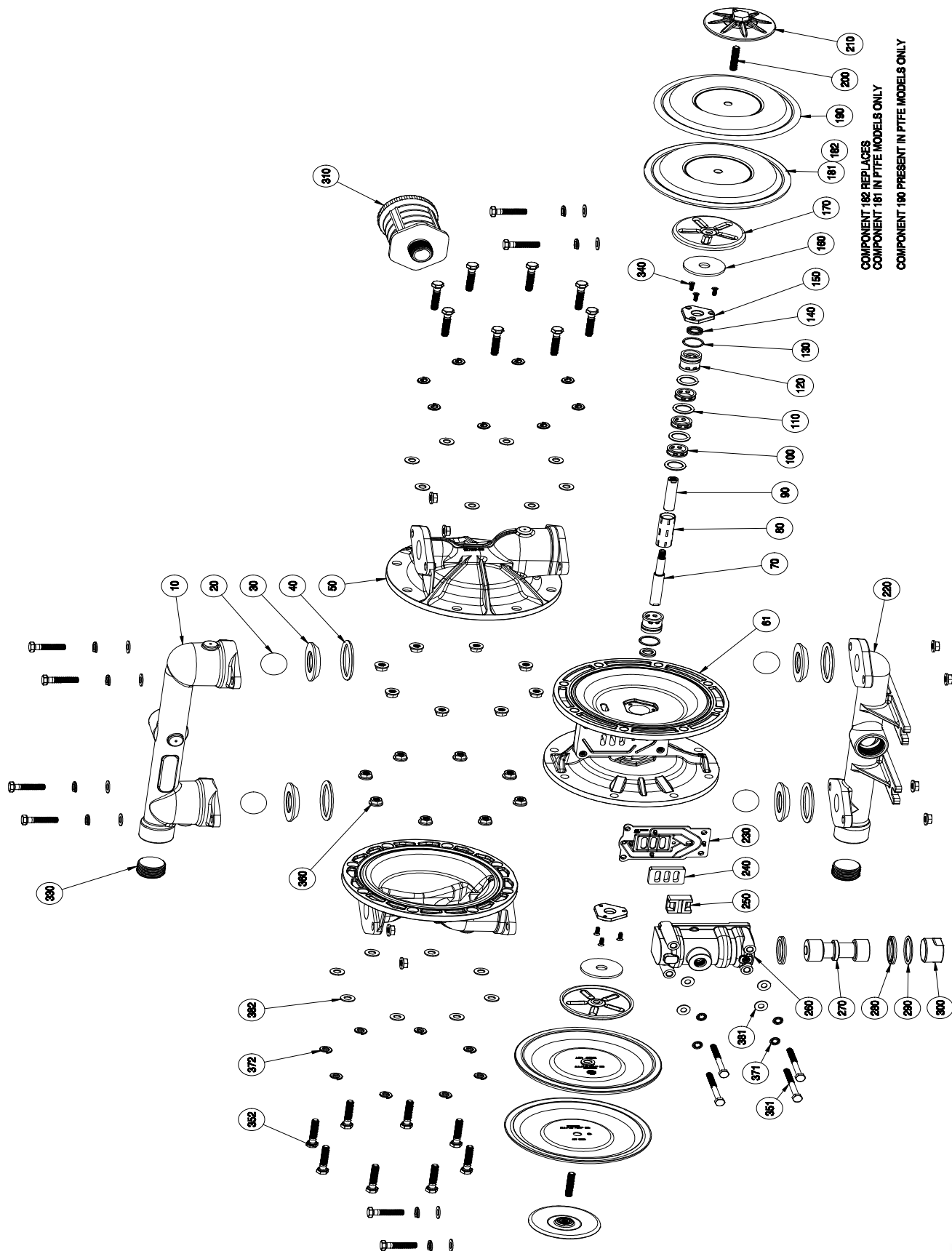


EXPLODED VIEW & PARTS LIST

A100-*A*-****-*** ALUMINUM & STAINLESS STEEL



PARTS LIST - ALUMINUM & STAINLESS STEEL

A100-*A*-****-***

ITEM	DESCRIPTION	QTY	PUMP MODEL	PART NO.	MATERIAL
10	DISCHARGE MANIFOLD	1	A100-NAA-****-0**	11310-20-NPT	Aluminum
			A100-BAA-****-0**	11310-20-BSPT	Aluminum
			A100-NA3-****-0**	11310-26-NPT	Stainless Steel
			A100-BA3-****-0**	11310-26-BSPT	Stainless Steel
20	BALL	4	A100-*A*-V**_***	11008-13	Viton®/FKM
			A100-*A*-E**_***	11008-15	EPDM
			A100-*A*-G**_***	11008-19	Geolast™
			A100-*A*-N**_***	11008-21	Buna-N
			A100-*A*-S**_***	11008-23	Santoprene®
			A100-*A*-3**_***	11008-26	Stainless Steel
			A100-*A*-T**_***	11008-45	PTFE
30	VALVE SEAT	4	A100-*A**_A**_***	10927-20	Aluminum
			A100-*A**_3**_***	10927-26	Stainless Steel
			A100-*A**_P**_***	10927-39	Polypropylene
			A100-*A**_Y**_***	10927-42	Nylon
40	O-RING (VALVE SEAT)	4	A100-*A*-***N_***	11947-11	Nitrile
			A100-*A*-***V_***	11947-13	Viton®/FKM
			A100-*A*-***E_***	11947-15	EPDM
			A100-*A*-***T_***	11947-17	PTFE
50	OUTER CHAMBER	2	A100-*AA-****_***	10726-20	Aluminum
			A100-*A3-****_***	10726-26	Stainless Steel
61	INTERMEDIATE	1	A100-*A*-****_***	11526-20	Aluminum
70 & 90	DIAPHRAGM ROD ASSEMBLY	1	ALL MODELS	35005-00	Stainless Steel
80	PILOT SLEEVE	1	ALL MODELS	10105-31 Δ	Acetel
100	INNER SPACER (PILOT SLEEVE)	3	ALL MODELS	10203-40 Δ	Polypropylene
110	O-RING (PILOT SLEEVE)	4	ALL MODELS	11920-16 Δ	Urethane
120	END SPACER (PILOT SLEEVE)	2	ALL MODELS	10209-40 Δ	Polypropylene
130	O-RING (END SPACER)	2	ALL MODELS	11923-16 Δ	Urethane
140	LIP SEAL (DIAPHRAGM ROD)	2	ALL MODELS	12000-76 Δ	Nitrile
150	RETAINING PLATE	2	ALL MODELS	12718-54	Nylon
160	BUMPER	2	ALL MODELS	12325-16	Urethane
170	INNER DIAPHRAGM PLATE	2	ALL MODELS	11104-25	Plated Steel
181	DIAPHRAGM	2	A100-*A*-N**_***	10612-11	Buna-N
			A100-*A*-V**_***	10612-13	Viton®/FKM
			A100-*A*-E**_***	10612-15	EPDM
			A100-*A*-G**_***	10612-19	Geolast™
			A100-*A*-S**_***	10612-23	Santoprene®
182	DIAPHRAGM, BACKUP (PTFE ONLY)	2	A100-*A*-T**_***	10613-23	Santoprene®
190	PTFE OVERLAY (PTFE ONLY)	2	A100-*A*-T**_***	11409-59	PTFE
200&210	OUTER DIAPHRAGM PLATE WITH STUD	2	A100-*AA-****_***	11220-20	Aluminum
			A100-*A3-****_***	11220-26	Stainless Steel
220	SUCTION MANIFOLD	1	A100-NAA-****-0**	11311-20-NPT	Aluminum
			A100-BAA-****-0**	11311-20-BSPT	Aluminum
			A100-NA3-****-0**	11311-26-NPT	Stainless Steel
			A100-BA3-****-0**	11311-26-BSPT	Stainless Steel
230	AIR VALVE GASKET	1	ALL MODELS	12125-19 ‡	Nitrile
240	SHUTTLE PLATE	1	ALL MODELS	10451-77 ‡	Ceramic

PARTS LIST - ALUMINUM & STAINLESS STEEL

A100-*A*-****-***

ITEM	DESCRIPTION	QTY	PUMP MODEL	PART NO.	MATERIAL
250	SHUTTLE	1	ALL MODELS	10431-32 ‡	Special
260	AIR VALVE BODY	1	ALL MODELS	11619-20 ‡	Aluminum
270	AIR VALVE SPOOL	1	ALL MODELS	10482-31 ‡	Acetel
280	LIP SEAL (AIR VALVE)	2	ALL MODELS	12003-76 ‡	Nitrile
290	O-RING (AIR VALVE END PLUG)	1	ALL MODELS	11913-11 ‡	Nitrile
300	AIR VALVE END PLUG	1	ALL MODELS	11706-20 ‡	Aluminum
310	MUFFLER MUFFLER (METAL)	1	ALL MODELS OPTIONAL	13001-00 13009-00	Standard Metal
320	N/A				
330	PIPE PLUG	2	A100-NAA-****-0** A100-BAA-****-0** A100-NA3-****-0** A100-BA3-****-0**	12265-20-NPT 12265-20-BSPT 12265-26-NPT 12265-26-BSPT	Aluminum Aluminum Stainless Steel Stainless Steel
340	SCREW, FLAT HEAD (#6-32 X 7/16")	6	ALL MODELS	12578-26	Stainless Steel
351	SCREW, HEX HEAD CAP (1/4"-20 X 3")	4	A100-*AA-****-*** A100-*A3-****-***	12516-25 12516-26	Plated Steel Stainless Steel
352	SCREW, HEX HEAD CAP (5/16"-18 X 1-1/2")	24	A100-*AA-****-*** A100-*A3-****-***	12584-25 12584-26	Plated Steel Stainless Steel
360	NUT, HEX FLANGE (5/16"-18)	24	A100-*AA-****-*** A100-*A3-****-***	12608-25 12608-26	Plated Steel Stainless Steel
371	WASHER, LOCK (1/4")	4	A100-*AA-****-*** A100-*A3-****-***	12350-25 12350-26	Plated Steel Stainless Steel
372	WASHER, SPLIT LOCK (5/16")	24	A100-*AA-****-*** A100-*A3-****-***	12313-25 12313-26	Plated Steel Stainless Steel
381	WASHER (1/4")	4	A100-*AA-****-*** A100-*A3-****-***	12300-25 12300-26	Plated Steel Stainless Steel
382	WASHER (5/16")	24	A100-*AA-****-*** A100-*A3-****-***	12310-25 12310-26	Plated Steel Stainless Steel
390	N/A				
400	GROUNDING LUG (NOT SHOWN)	1	OPTIONAL	13481-20	Aluminum
	Magnalube® .75 oz.		As Required, All Models	13404-00	Grease

* Any Character

‡, Δ Only sold as part of assembly

ASSEMBLY PART NUMBERS	PUMP MODEL	PART NO.	MATERIAL
‡ AIR VALVE ASSEMBLY 230, 240, 250, 260, 270, 280, 290, 300	ALL MODELS	AMK-100-A	Various
Δ PILOT SIEVE ASSEMBLY 80, 100, 110, 120, 130, 140	ALL MODELS	APK-100-A	Various