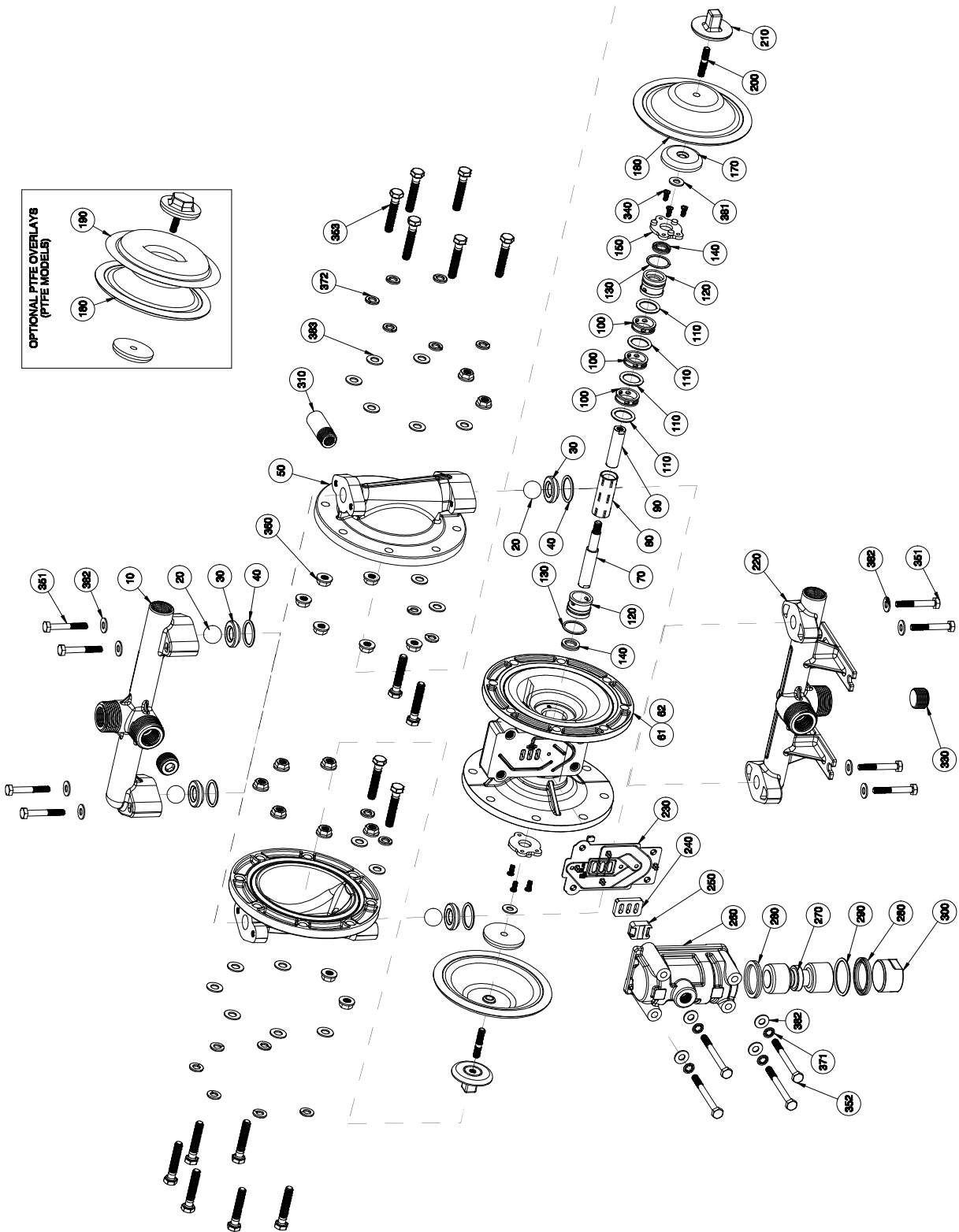


# EXPLODED VIEW & PARTS LIST

## ALUMINUM AND STAINLESS STEEL PUMPS WITH ALUMINUM AIR SECTION (A050-\*A\*-\*\*\*\*-\*\*\*)



# PARTS LIST - ALUMINUM AND STAINLESS STEEL PUMPS WITH ALUMINUM CENTER SECTION (A050-\*A\*-\*\*\*\*-\*\*\*)

ITEM	DESCRIPTION	QTY	PUMP MODEL	PART NO.	MATERIAL
10	DISCHARGE MANIFOLD	1	A050-N*A-****-0**	11329-20-NPT	Aluminum
			A050-B*A-****-0**	11329-20-BSPT	Aluminum
			A050-N*3-****-0**	11329-26-NPT	Stainless Steel
			A050-B*3-****-0**	11329-26-BSPT	Stainless Steel
20	BALL	4	A050-***-V**_***	11000-13-4PK	Viton®/FKM
			A050-***-G**_***	11000-19-4PK	Geolast®
			A050-***-C**_***	11000-23-4PK	Santoprene®
			A050-***-3**_***	11000-26-4PK	Stainless Steel
			A050-***-T**_***	11000-45-4PK	PTFE
30	VALVE SEAT	4	A050-***-A*_***	10900-20-4PK	Aluminum
			A050-***-3*_***	10900-26-4PK	Stainless Steel
			A050-***-P*_***	10900-40-4PK	Polypropylene
			A050-***-Y*_***	10900-42-4PK	Nylon
			A050-***-K*_***	10900-56-4PK	PVDF
40	O-RING (VALVE SEAT)	4	A050-***-N-***	11904-11-4PK	Nitrile
			A050-***-V-***	11904-13-4PK	Viton®/FKM
			A050-***-E-***	11904-15-4PK	EPDM
			A050-***-T-***	11904-17-4PK	PTFE
50	OUTER CHAMBER	2	A050-**A-****-***	10720-20	Aluminum
			A050-**3-****-***	10720-26	Stainless Steel
61 & 62	INTERMEDIATE	1	A050-*A*-****-***	11527-20	Aluminum
70 & 90	DIAPHRAGM ROD ASSEMBLY	1	ALL MODELS	33000-00	Stainless Steel
80	PILOT SLEEVE	1	ALL MODELS	10105-31 Δ	Acetel
100	INNER SPACER (PILOT SLEEVE)	3	ALL MODELS	10203-40 Δ	Polypropylene
110	O-RING (PILOT SLEEVE)	4	ALL MODELS	11920-16 Δ	Urethane
120	END SPACER (PILOT SLEEVE)	2	ALL MODELS	10204-40 Δ	Polypropylene
130	O-RING (END SPACER)	2	ALL MODELS	11923-11 Δ	Nitrile
140	LIP SEAL (DIAPHRAGM ROD)	2	ALL MODELS	12000-76 Δ	Nitrile
150	RETAINING PLATE	2	ALL MODELS	12708-54	Nylon
160	N/A				
170	INNER DIAPHRAGM PLATE	2	ALL MODELS	11100-40	Polypropylene
180	DIAPHRAGM	2	A050-***-V**_***	10600-13-2PK	Viton®/FKM
			A050-***-G**_***	10600-19-2PK	Geolast®
			A050-***-N**_***	10600-21-2PK	Nitrile
			A050-***-S**_***	10600-23-2PK	Santoprene®
			A050-***-T**_***	10600-23-2PK	Santoprene®
190	OVERLAY (OPTIONAL)	2	A050-***-T**_***	11400-59-2PK	PTFE
200 & 210	OUTER DIAPHRAGM PLATE	2	A050-**A-****-***	11208-20	Aluminum
			A050-**3-****-***	11208-26	Stainless Steel
220	SUCTION MANIFOLD	1	A050-N*A-****-0**	11328-20-NPT	Aluminum
			A050-B*A-****-0**	11328-20-BSPT	Aluminum
			A050-N*3-****-0**	11328-26-NPT	Stainless Steel
			A050-B*3-****-0**	11328-26-BSPT	Stainless Steel
230	AIR VALVE GASKET	1	ALL MODELS	12126-19 ‡	Nitrile
240	SHUTTLE PLATE	1	ALL MODELS	10416-77 ‡	Ceramic
250	SHUTTLE	1	ALL MODELS	10415-00 ‡	Special
260	AIR VALVE BODY	1	A050-*A*-****-***	42001-20 ‡	Aluminum
270	AIR VALVE SPOOL	1	ALL MODELS	10480-31 ‡	Acetel
280	LIP SEAL (AIR VALVE)	2	ALL MODELS	12003-76 ‡	Nitrile
290	O-RING (AIR VALVE END PLUG)	1	ALL MODELS	11913-11 ‡	Nitrile

# PARTS LIST - ALUMINUM AND STAINLESS STEEL PUMPS WITH ALUMINUM CENTER SECTION (A050-\*A\*-\*\*\*\*-\*\*\*)

ITEM	DESCRIPTION	QTY	PUMP MODEL	PART NO.	MATERIAL
300	AIR VALVE END PLUG	1	A050-*A*-****-***	11706-20 ‡	Aluminum
310	MUFFLER MUFFLER (METAL)	1	ALL MODELS Optional	13008-00 13002-00	Standard Metal
320	N/A				
330	PIPE PLUG	2	A050-N*A*-****-*** A050-B*A*-****-*** A050-N*3-****-*** A050-B*3-****-***	12255-20-NPT-4PK 12255-20-BSPT-4PK 12255-26-NPT-4PK 12255-26-BSPT-4PK	Aluminum Aluminum Stainless Steel Stainless Steel
340	PAN-HEAD MACH SCREW (#6-32 x 7/16)	6	A050-**A-****-***	12585-26-16PK	Stainless Steel
351	HEX HEAD CAP SCREW (1/4"-20 x 1-3/4")	8	A050-**A-****-*** A050-**3-****-***	12500-25-16PK 12500-26-16PK	Plated Steel Stainless Steel
352	HEX HEAD CAP SCREW (1/4"-20 x 2-3/4")	4	A050-**A-****-*** A050-**3-****-***	12576-25-16PK 12576-26-16PK	Plated Steel Stainless Steel
353	HEX HEAD CAP SCREW (5/16-18 x 1-3/4")	16	A050-**A-****-*** A050-**3-****-***	12503-25-16PK 12503-26-16PK	Plated Steel Stainless Steel
360	HEX FLANGE NUT (5/16"-18)	16	A050-**A-****-*** A050-**3-****-***	12608-25-16PK 12608-26-16PK	Plated Steel Stainless Steel
371	LOCK WASHER (1/4")	4	A050-**A-****-*** A050-**3-****-***	12350-25-16PK 12350-26-16PK	Plated Steel Stainless Steel
372	WASHER, SPLIT LOCK (5/16")	16	A050-**A-****-*** A050-**3-****-***	12313-25-16PK 12313-26-16PK	Plated Steel Stainless Steel
381	WASHER (1/4")	2	ALL MODELS	12300-26-16PK	Stainless Steel
382	WASHER (1/4")	12 12	A050-**A-****-*** A050-**3-****-***	12300-25-16PK 12300-26-16PK	Plated Steel Stainless Steel
383	WASHER (5/16")	16	A050-**A-****-*** A050-**3-****-***	12310-25-16PK 12310-26-16PK	Plated Steel Stainless Steel
390	N/A				
400	GROUNDING LUG (NOT SHOWN) MagnaLube® .75 oz. (As Required)	1	OPTIONAL ALL MODELS	13481-20 13404-00	Aluminum Grease

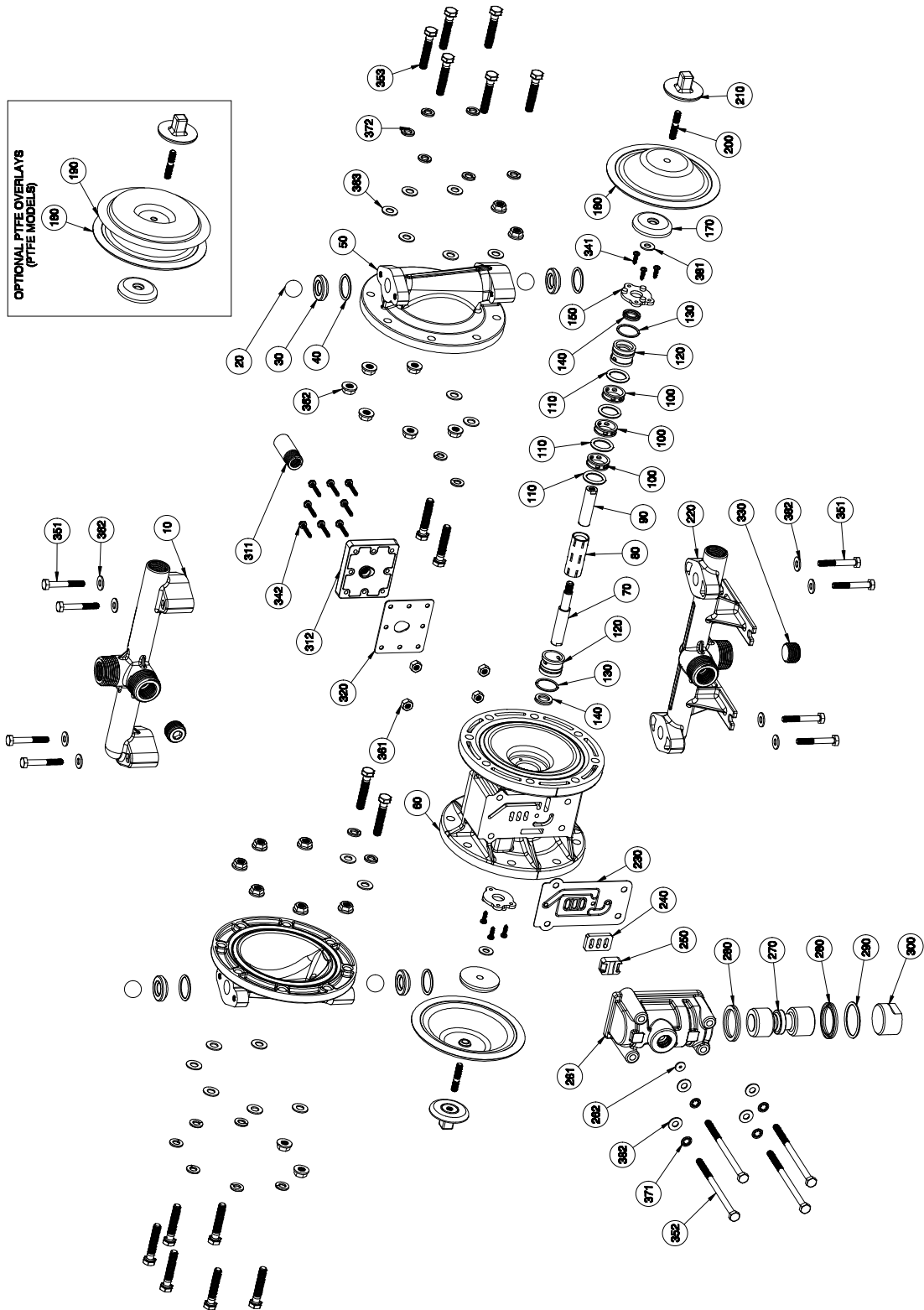
\* Any Character

‡, Δ Only sold as part of assembly

ASSEMBLY PART NUMBERS	PUMP MODEL	PART NO.	MATERIAL
‡ AIR VALVE ASSEMBLY INCLUDES 230, 240, 250, 260, 270, 280, 290, 300	A050-*A*-****-***	AMK-050-A	Various
Δ PILOT SIEVE ASSEMBLY INCLUDES 80, 100, 110, 120, 130, 140	A050-*A*-****-***	APK-050-A	Various

# EXPLODED VIEW & PARTS LIST

## ALUMINUM AND STAINLESS STEEL PUMPS WITH PLASTIC AIR SECTION (A050-\*P\*-\*\*\*\*-\*\*\*)



# PARTS LIST - ALUMINUM AND STAINLESS STEEL PUMPS WITH PLASTIC CENTER SECTION (A050-\*P\*-\*-\*-\*\*\*)

ITEM	DESCRIPTION	QTY	PUMP MODEL	PART NO.	MATERIAL
10	DISCHARGE MANIFOLD	1	A050-N*A-*-*-0**	11329-20-NPT	Aluminum
			A050-B*A-*-*-0**	11329-20-BSPT	Aluminum
			A050-N*3-*-*-0**	11329-26-NPT	Stainless Steel
			A050-B*3-*-*-0**	11329-26-BSPT	Stainless Steel
20	BALL	4	A050-*-*-*V**-*-*-**	11000-13-4PK	Viton®/FKM
			A050-*-*-*G**-*-*-**	11000-19-4PK	Geolast®
			A050-*-*-*S**-*-*-**	11000-23-4PK	Santoprene®
			A050-*-*-*3**-*-*-**	11000-26-4PK	Stainless Steel
			A050-*-*-*T**-*-*-**	11000-45-4PK	PTFE
30	VALVE SEAT	4	A050-*-*-**A*-*-*-**	10900-20-4PK	Aluminum
			A050-*-*-**3*-*-*-**	10900-26-4PK	Stainless Steel
			A050-*-*-**P*-*-*-**	10900-40-4PK	Polypropylene
			A050-*-*-**Y*-*-*-**	10900-42-4PK	Nylon
			A050-*-*-**K*-*-*-**	10900-56-4PK	PVDF
40	O-RING (VALVE SEAT)	4	A050-*-*-***N-*-*-**	11904-11-4PK	Nitrile
			A050-*-*-***V-*-*-**	11904-13-4PK	Viton®/FKM
			A050-*-*-***E-*-*-**	11904-15-4PK	EPDM
			A050-*-*-***T-*-*-**	11904-17-4PK	PTFE
50	OUTER CHAMBER	2	A050-*-*A-*-*-***	10720-20	Aluminum
			A050-*-*3-*-*-***	10720-26	Stainless Steel
60	INTERMEDIATE	1	A050-*P*-*-*-***	11521-60	Polypropylene
70 & 90	DIAPHRAGM ROD ASSEMBLY	1	ALL MODELS	33000-00	Stainless Steel
80	PILOT SLEEVE	1	ALL MODELS	10105-31 Δ	Acetel
100	INNER SPACER (PILOT SLEEVE)	3	ALL MODELS	10203-40 Δ	Polypropylene
110	O-RING (PILOT SLEEVE)	4	ALL MODELS	11920-16 Δ	Urethane
120	END SPACER (PILOT SLEEVE)	2	ALL MODELS	10204-40 Δ	Polypropylene
130	O-RING (END SPACER)	2	ALL MODELS	11923-11 Δ	Nitrile
140	LIP SEAL (DIAPHRAGM ROD)	2	ALL MODELS	12000-76 Δ	Nitrile
150	RETAINING PLATE	2	ALL MODELS	12708-54	Nylon
160	N/A				
170	INNER DIAPHRAGM PLATE	2	ALL MODELS	11100-40	Polypropylene
180	DIAPHRAGM	2	A050-*-*-*V**-*-*-**	10600-13-2PK	Viton®/FKM
			A050-*-*-*G**-*-*-**	10600-19-2PK	Geolast®
			A050-*-*-*N**-*-*-**	10600-21-2PK	Nitrile
			A050-*-*-*S**-*-*-**	10600-23-2PK	Santoprene®
			A050-*-*-*T**-*-*-**	10600-23-2PK	Santoprene®
190	OVERLAY (OPTIONAL)	2	A050-*-*-*T**-*-*-**	11400-59-2PK	PTFE
200 & 210	OUTER DIAPHRAGM PLATE	2	A050-*-*A-*-*-***	11208-20	Aluminum
			A050-*-*3-*-*-***	11208-26	Stainless Steel
220	SUCTION MANIFOLD	1	A050-N*A-*-*-0**	11328-20-NPT	Aluminum
			A050-B*A-*-*-0**	11328-20-BSPT	Aluminum
			A050-N*3-*-*-0**	11328-26-NPT	Stainless Steel
			A050-B*3-*-*-0**	11328-26-BSPT	Stainless Steel
230	AIR VALVE GASKET	1	ALL MODELS	12116-19 ‡	Nitrile
240	SHUTTLE PLATE	1	ALL MODELS	10416-77 ‡	Ceramic
250	SHUTTLE	1	ALL MODELS	10415-00 ‡	Special
261	AIR VALVE BODY	1	A050-*P*-*-*-***	11614-60 ‡	Polypropylene
270	AIR VALVE SPOOL	1	ALL MODELS	10480-31 ‡	Acetel
280	LIP SEAL (AIR VALVE)	2	ALL MODELS	12003-76 ‡	Nitrile
290	O-RING (AIR VALVE END PLUG)	1	ALL MODELS	11913-11 ‡	Nitrile

# PARTS LIST - ALUMINUM AND STAINLESS STEEL PUMPS WITH PLASTIC CENTER SECTION (A050-\*P\*-\*\*\*\*-\*\*\*)

ITEM	DESCRIPTION	QTY	PUMP MODEL	PART NO.	MATERIAL
300	AIR VALVE END PLUG	1	A050-*P*-****-***	11703-60 ‡	Polypropylene
311	MUFFLER MUFFLER (METAL)	1	ALL MODELS Optional	13008-00 13002-00	Standard Metal
312	MUFFLER PLATE	1	A050-*P*-****-***	13111-60	Polypropylene
320	MUFFLER PLATE GASKET	1	A050-*P*-****-***	12117-19	Nitrile
330	PIPE PLUG	2	A050-N*A-****-*** A050-B*A-****-*** A050-N*3-****-*** A050-B*3-****-***	12255-20-NPT-4PK 12255-20-BSPT-4PK 12255-26-NPT-4PK 12255-26-BSPT-4PK	Aluminum Aluminum Stainless Steel Stainless Steel
341	SCREW, SELF-TAP (#6 X 1/2")	6	A050-*P*-****-***	12510-26-16PK	Stainless Steel
342	SCREW, SLOTTED HEAD SELF-TAP (1")	8	A050-*P*-****-***	12525-26-16PK	Stainless Steel
351	HEX HEAD CAP SCREW (1/4"-20 x 1-3/4")	8	A050-**A-****-*** A050-**3-****-***	12500-25-16PK 12500-26-16PK	Plated Steel Stainless Steel
352	HEX HEAD CAP SCREW (1/4"-20 x 4-1/2")	4	A050-*PA-****-*** A050-*P3-****-***	12513-25-16PK 12513-26-16PK	Plated Steel Stainless Steel
353	HEX HEAD CAP SCREW (5/16-18 x 1-3/4")	16	A050-**A-****-*** A050-**3-****-***	12503-25-16PK 12503-26-16PK	Plated Steel Stainless Steel
361	HEX NUT (1/4"-20)	4	A050-*PA-****-*** A050-*P3-****-***	12600-25-16PK 12600-26-16PK	Plated Steel Stainless Steel
362	HEX FLANGE NUT (5/16"-18)	16	A050-**A-****-*** A050-**3-****-***	12608-25-16PK 12608-26-16PK	Plated Steel Stainless Steel
371	LOCK WASHER (1/4")	4	A050-**A-****-*** A050-**3-****-***	12350-25-16PK 12350-26-16PK	Plated Steel Stainless Steel
372	WASHER, SPLIT LOCK (5/16")	16	A050-**A-****-*** A050-**3-****-***	12313-25-16PK 12313-26-16PK	Plated Steel Stainless Steel
381	WASHER (1/4")	2	ALL MODELS	12300-26-16PK	Stainless Steel
382	WASHER (1/4")	12	A050-**A-****-*** A050-**3-****-***	12300-25-16PK 12300-26-16PK	Plated Steel Stainless Steel
383	WASHER (5/16")	16	A050-**A-****-*** A050-**3-****-***	12310-25-16PK 12310-26-16PK	Plated Steel Stainless Steel
390	N/A				
400	GROUNDING LUG (NOT SHOWN)	1	OPTIONAL	13481-20	Aluminum
	Magnalube® .75 oz. (As Required)		ALL MODELS	13404-00	Grease

\* Any Character

‡, Δ Only sold as part of assembly

ASSEMBLY PART NUMBERS	PUMP MODEL	PART NO.	MATERIAL
‡ AIR VALVE ASSEMBLY INCLUDES 230, 240, 250, 260, 270, 280, 290, 300	A050-*P*-****-***	AMK-050-P	Various
Δ PILOT SEEVE ASSEMBLY INCLUDES 80, 100, 110, 120, 130, 140	A050-*P*-****-***	APK-050-P	Various