



**This PDF file  
Courtesy of**



**Central States Industrial Equipment & Service Inc.**

2700 PARTNERSHIP BLVD., SPRINGFIELD, MO 65803-8208 U.S.A. 417-831-1411 800-654-5635 FAX 417-831-5314

**See us on the WEB**  
[www.csidesigns.com](http://www.csidesigns.com)  
[www.AL6XN.com](http://www.AL6XN.com)  
[www.csiprocess.com](http://www.csiprocess.com)  
[www.transferpanel.com](http://www.transferpanel.com)

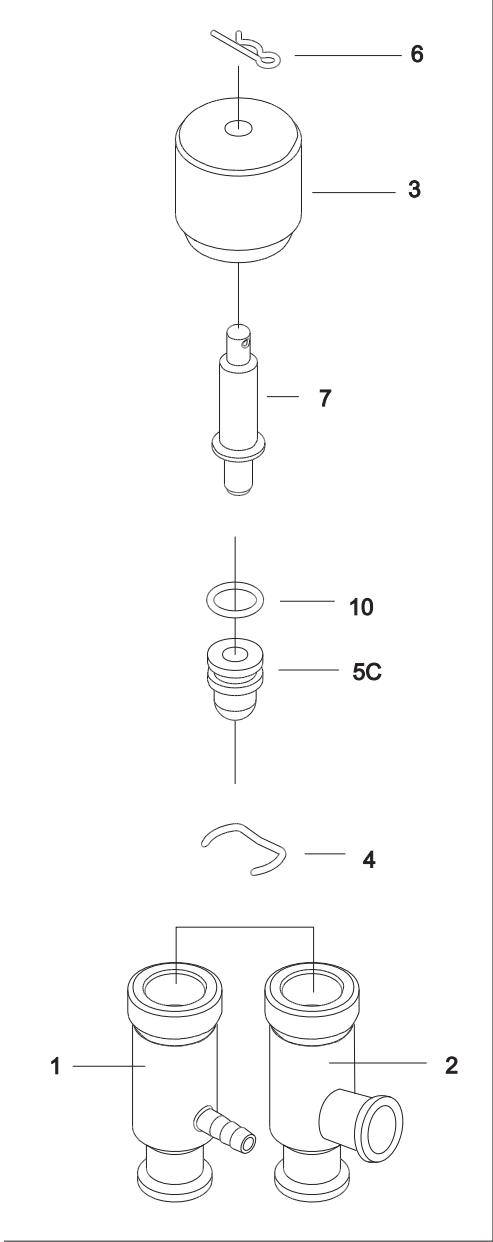
**Process Systems  
Fabrication  
Distribution  
Installation  
Call 1-800-654-5635**

Return to menu

# 660 Manual Valve

Distribution by  
**Central States Industrial**  
Springfield, MO  
800-654-5635  
[www.csidesigns.com](http://www.csidesigns.com)

2



Reg.: 2003-09



**CSI**

CONTACT CSI FOR MORE INFORMATION | [CSIDESIGNS.COM](http://CSIDESIGNS.COM) | [SALES@CSIDESIGNS.COM](mailto:SALES@CSIDESIGNS.COM) | 417.831.1411

Pos.	Qty.	Denomination	Code No.
1	1	Valve body 1/2 clamp x 1/4 hose barb .....	770920
2	1	Valve body 1/2 x 1/2 clamp .....	773112
3	1	Handle uhmw .....	750544
3	1	Handle aluminum bronze .....	751693
4	1	Clip .....	750551
5C	● 1	PTFE plug w/ o ringb .....	750557
6	1	Pin .....	750526
7	1	Stem .....	771428
10	● 1	Plug o ring for #5c plug only .....	750173

- included in Service Kit

- Service kit ..... 9613990135

Distribution by  
**Central States Industrial**  
**Springfield, MO**  
800-654-5635  
[www.csidesigns.com](http://www.csidesigns.com)

