

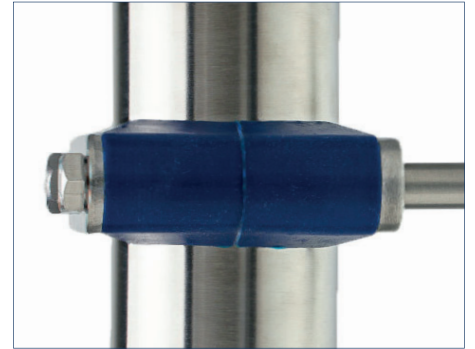


Syntiro Dynamics

PROCESS TUBE & PIPE CATALOG

Hygienic Pipe Hanging Systems for Stainless Steel Tube,
Schedule Pipe and Instrumentation Lines

DRAINABLE & CLEANABLE



NO EXPOSED THREADS



ZERO CAULK - ENGINEERED SOLUTIONS



Table Of Contents

NEW & UNIQUE HANGERS - Solutions And Uptime Savings	3-4
CSD SERIES - Detail Sheet	5
CSDH - Hang Mount - Treaded Connection	6
CSDW - Weld Mount - Welded to Structure or Mounting Rod	7
CSDBM - Base Mount - Flat Bottom Plate	8
CSDBMC - Base Mount - Threaded Coupling Connection	9
CSDBMR - Base Mount- Rod Connection	10
CSDWR - 6” Rod Welded to CSDW - custom lengths available	11
CSDD - Dual Instrumentation Line Supports	12
CSDQ - Quad Instrumentation Line Supports	12
PHH SERIES - Detail Sheet	13
PHHW - Process Hex Hanger Weld Mount - Rod to be Welded to Hardware Frame	14
PHHC - Process Hex Hanger Threaded Coupling - Thread Mount	15
PHHR - Process Hex Hanger Rod Mount - Rod is Welded to Hardware Frame	16
ZCB - Zero Caulk Bracket - Mounts CSD Series - Material Data, Feaures and Benefits	17
ZCB - Zero Caulk Bracket - Dimesions and Part Numberss	18
ZCUB- Zero Caulk Universal Bracket - Mounts CSD & PHH Series - Materials, Features and Benefits	19
ZCUB - Zero Caulk Universal Bracket - Dimensions and Part Numbers	20
ZCUP - Zero Caulk Universal Plate - Mounts CSD & PHH Series - Materials, Features and Benefits	21
ZCUP - Zero Caulk Universal Plate - Dimensions and Part Numbers	22
ZCOFF - Zero Caulk Offset/Spacer - Materials, Features and Benefits	23
ZCOFF - Zero Caulk Offset/Spacers - Dimensions and Part Numbers	24
ZC-1TOFF - Zero Caulk 1” Tube Bracket Offset/Spacer - Materials, Features and Benefits	25
ZC-1TOFF - Zero Caulk 1” Tube Bracket Offset Spacer - Dimensions and Part Numbers	26
ZCMPB - Zero Caulk Multi Pipe Wall Mounting Bracket - Materials, Features and Benefits	27
ZCMPB - Zero Caulk Multi Pipe Wall Mounting Bracket - Dimensions and Part Numbers	28
ZP1PC - Zero Caulk CSD Series Pedestal Mount - Material Data, Features and Benefits	29
ZC1PC - Zero Caulk CSD Series Pedestal Mount - Dimensions and Part Numbers	30
ZC1PP - Zero Caulk PHH Series Pedestal Mount - Material Data, Features and Benefits	31
ZC1PP - Zero Caulk PHH Series Pedestal Mount - Dimensions and Part Numbers	32
ZCNHB - Zero Caulk No Bolt Head - Hanger Assembly	33
SROD - Shielded Rod - All Thread Rod with LDPE Shield - 6’ Lengths	34
CSD Guides - Details Section	35



About Syntiro Dynamics

Syntiro was established in 2009 and has since become a top supplier of sanitary pipe hanging systems. We offer a comprehensive range of cleanroom pipe hangers supporting stainless steel and copper tubing, schedule pipe, conduit, instrumentation, and cable lines. Our hangers are mainly used in hygienic piping applications in biotech, pharmaceutical, food, beverage, and dairy industries.

The CSD is an excellent option for creating a thorough cleanroom environment, thanks to its vast range of line types supported and various mounting configurations. It features Zero Puddle silicone rubber inserts with a convex design that eliminates flat surfaces on riser / vertical lines. Along with the anchor hangers, loose fit guides are also offered. Guides allow a line to expand and contract freely during thermal cycling. The CSD's robust build and impressive features has made it a top choice for many contractors and OEMs.

The Process Hex Hanger is designed for easy cleaning and incorporates the hexagonal shape commonly used in the food and beverage industries. Its unique features include riser line Zero Puddle silicone rubber inserts eliminating puddles, as well as eliminating exposed threads, and other debris-collecting points that can compromise sanitation. Unlike outdated hex hangers, the PHH's modern design has no blind spots or voids that can harbor pathogens, and it requires only one tool for installation, reducing the risk of accidents and making it easier to work in tight spaces. The Process Hex Hanger is the perfect solution for complying with FSMA cleanliness requirements in the 21st century.

Our Zero Caulk Brackets and Zero Caulk Spacers are self-explanatory. These products provide a hygienic Zero Caulk connection for hangers and equipment mounted on surfaces in process areas. The Food Safety Modernization Act requires everything mounted in process areas to be offset from the surface to allow for complete cleaning access. Traditionally, brackets and offset spacers have required a caulked seal to cover gaps on all surfaces. However, a caulk seal can deteriorate over time due. Exposure to wash and wipe downs accelerates the breaking down of caulk leading to bacterial harbor points that may require removal and reapplication of caulk in a few years. Any areas that harbor bacteria can lead to contamination. By using Zero Caulk mounted products, the caulking process is eliminated, resulting in improved cleanliness, reduced labor costs, and added maintenance uptime. This means that you can save time and money by avoiding the need to inspect, remove, and reapply unacceptable or broken-down caulk.

Syntiro appreciates your years of support.

New & Unique Pipe Hanging SOLUTIONS AND UPTIME SAVINGS

ZERO CAULK OFFSET SPACERS - ZCOFF'S

Silicone Rubber Gasket Seals To Wall's Surface and Mounted Device

NEW



Flat End To Wall or Hanger, Curved to 1" Tube - Page 25



Wall to Component - Page 28

- **NEW** - Silver ion additive is blended in the FDA grade Silicone Rubber Gaskets, impeding bacterial, mold and fungus from forming on the gasket
- The FDA's Food Safety Modernization Act requires everything mounted in process areas be offset from all surfaces.
- FSMA Compliance requires offset's enabling the sanitization of all surfaces: front, top, bottom and the backside.
- Zero Caulk, via surface sealing gaskets, eliminates caulking
- Caulk over time with exposure will breakdown and crack
- Cracks/harborage sites are all potential pathogen growth zones
- If you can't see it, reach it, clean it, or sample it, this could be a pathogen growth site

U.S. Patent Pending

NEW (pages 22-23)



(pages 22-23)

ZERO CAULK UNIVERSAL CUP MOUNT - ZCUP

Ideal for Insulated Metal Panels IMP's or blind side walls, but perfect for open side walls. The brackets stainless steel cup/boot encases the rivet nut while the silicone rubber gasket seals to the mounting surface. The bracket can also be mounted to open side walls with bolts and lock nuts.

- **NEW** - Silver ion additive is blended in the FDA grade Silicone Rubber Gaskets, impeding bacterial, mold, fungus from forming on the gasket
- ZCUP's mounting rod allows universal mounting of any style hangers or process area accessories
- Caulk over time with exposure will breakdown and crack
- Harborage points are potential bacteria growth zones
- ZC eliminates the need to inspect and replace caulking
- Creating maintenance Uptime

U.S. Pat. No. US 9,822,907 B1



Syntiro Dynamics

NO EXPOSED THREADS

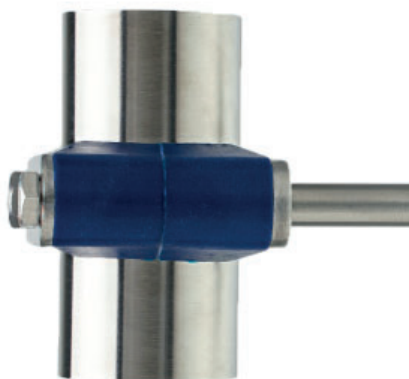


PROCESS HEX HANGER - PHH

- Drainable exterior
- Wipe down cleanable
- No exposed threads
- Self draining on riser lines
- Carriage bolt locks into hardware frame's square hole, allowing a single tool to tighten acorn nuts
- Carriage bolts are reversible, allowing rounded drainable surfaces to be positioned on hangers topside
- Hex shape is familiar to most installers - no installation learning curve

U.S. Pat. No. US 9,038,968 B2

ENHANCED



ZERO PUDDLE SILICONE RUBBER INSERTS Removed Flat Spots on Riser Hanger's Topside

Offered In: Tube OD Sizes, Scheduled Pipe, PVC Coated Conduit, Electrical Metallic Tubing (EMT) and copper tube

When supporting riser/vertical lines:

- The inserts sloped/convex sides eliminates flat surfaces
- Facilitating drainage
- Eases cleaning and wipe downs - creating Uptime
- Available on all CSD & PHH style hangers

U.S. Pat. No. US 9,033,289 B2

CSD SERIES

TUBE & PIPE HANGERS NEW ZERO PUDDLE INSERTS

APPLICATIONS:

- Cleanrooms and mechanical areas; not limited to: biotech, pharmaceutical, food processing, beverage, dairy, cosmetic, chemical, water treatment, and semi-conductor industries.
- Low flow & low pressure systems with moderate vibration: WFI, SIP, CIP, process, utility & instrument lines, WFI, SIP, CIP, process, utilities & instrument lines

SIZES:

- Support Range: 1/4" - 6" Tube and 1/2" - 6" Pipe for Copper and Conduits including PVC Coated Pipe contact Syntiro
- Tight fit Anchors and loose fit Guides are offered

FEATURES:

- Reduced OD allows hanger to be encased under the insulation's jacket
- ZERO PUDDLE Silicones inserts raised geometry facilitates drainage of liquids on vertical/riser lines creating maintenance uptime.
- There are no exposed threads or openings

MATERIALS:

- 304 and 316 stainless steels
- ZERO PUDDLE inserts are FDA grade silicone rubber

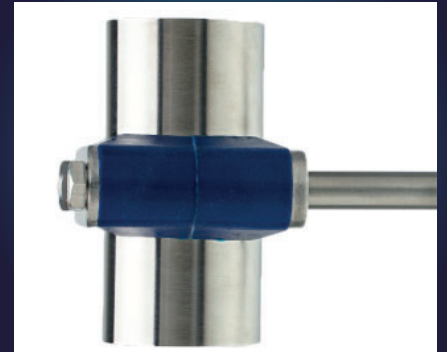
SPECIFICATIONS:

- Intermittent temperatures from -40F to 320F
- Continuous temperatures from -20F to 302F - Contact Syntiro with continuous application's environmental details

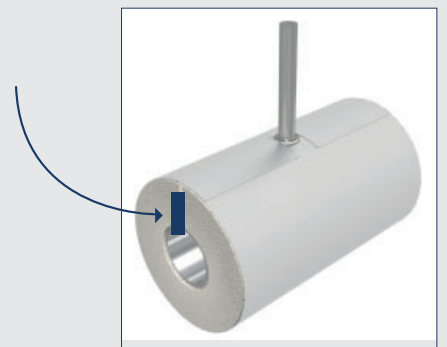
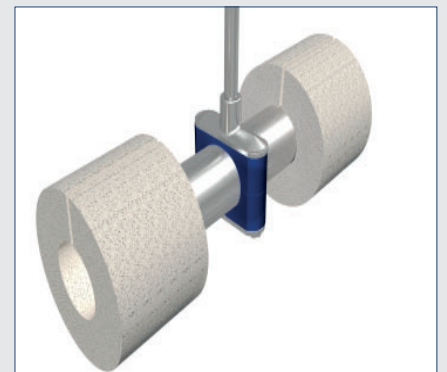
BENEFITS:

- Guides loose fit allow the line to freely expand and contract during thermal cycling, preventing undo stress to welds
- Hanger's threaded section is elongated, increasing the housings elevation adjustment aiding in slope alignment
- Insulation Envelope "IE": Reduced OD allows hanger to be buried under the insulation jacket
- Insulation Thickness: Line's ODs are Encased Under Insulation
 - 1.0" of insulation : 1/2" Tube (0.5") to 3" Copper (3.125")
 - 1.5" of insulation : 3" Pipe (3.5") to 4" Pipe (4.50")
 - 2.0" of insulation : 6" Tube (6.0") to 6" Pipe (6.625")
- There are no exposed threads or openings in hardware plates
- All plates are cleaned polished
- Hanger threads match MSS 69 rod OD requirement

ZERO PUDDLE INSERT



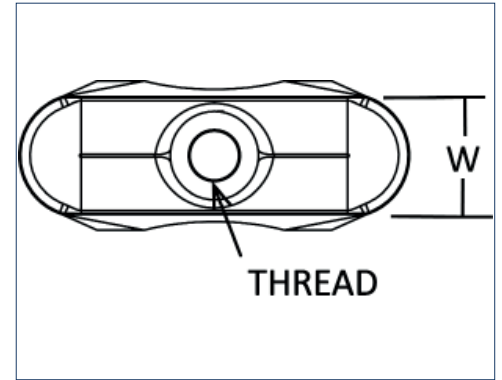
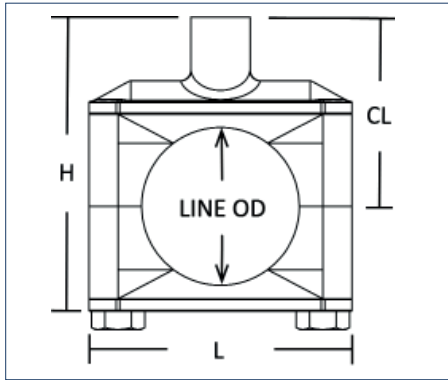
INSULATION ENVELOPE "IE"



Refer to www.syntirocorp.com or call Syntiro for most up to date information

HANG MOUNT - CSDH

FOR ATTACHMENT: Use Syntiro's Shielded Rod, solid rod with threaded end(s) or all thread rod

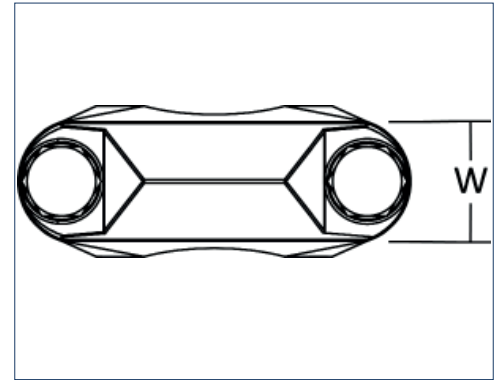
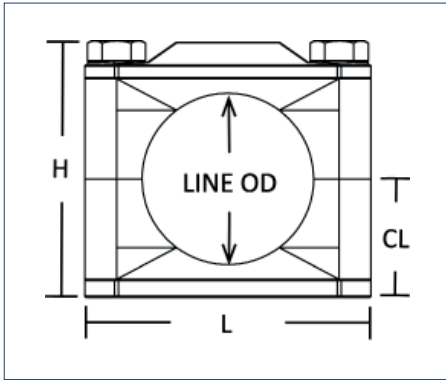


for 316 hardware substitute 304 with 316

Tube Size	Line OD	H	L	PLATES W	CL	Thread	Part Number (anchor/tight fit)	Part Number (guide/loose fit)
1/4"	0.25	1.85	1.93	0.75	1.45	3/8"-16	CSDH0.25T304ZP	CSDH0.25T304ZG
3/8"	0.38	2.07	1.93	0.75	1.45	3/8"-16	CSDH0.38T304ZP	CSDH0.38T304ZG
1/2"	0.50	2.29	1.93	0.75	1.55	3/8"-16	CSDH0.50T304ZP	CSDH0.50T304ZG
3/4"	0.75	2.29	1.93	0.75	1.55	3/8"-16	CSDH0.75T304ZP	CSDH0.75T304ZG
1"	1.00	2.29	1.93	0.75	1.55	3/8"-16	CSDH1.0T304ZP	CSDH1.0T304ZG
1 1/2"	1.50	2.79	2.49	0.75	1.80	3/8"-16	CSDH1.5T304ZP	CSDH1.5T304ZG
2"	2.00	3.29	2.99	0.88	2.05	3/8"-16	CSDH2.0T304ZP	CSDH2.0T304ZG
2 1/2"	2.50	3.58	3.36	0.88	2.09	1/2"-13	CSDH2.5T304ZP	CSDH2.5T304ZG
3"	3.00	5.18	3.99	0.88	3.30	1/2"-13	CSDH3.0T304ZP	CSDH3.0T304ZG
4"	4.00	6.36	5.10	1.00	4.05	5/8"-11	CSDH4.0T304ZP	CSDH4.0T304ZG
6"	6.00	7.44	7.26	1.25	4.11	3/4"-10	CSDH6.0T304ZP	CSDH6.0T304ZG
Pipe Size	Line OD	H	L	PLATES W	CL	Thread	Part Number (anchor/tight fit)	Part Number (guide/loose fit)
1/2"	0.840	2.29	1.93	0.75	1.55	3/8"-16	CSDH0.50P304ZP	CSDH0.50P304ZG
3/4"	1.050	2.29	1.93	0.75	1.55	3/8"-16	CSDH0.75P304ZP	CSDH0.75P304ZG
1"	1.315	2.79	2.49	0.75	1.80	3/8"-16	CSDH1.0P304ZP	CSDH1.0P304ZG
1 1/4"	1.660	3.29	2.99	0.88	2.05	3/8"-16	CSDH1.25P304ZP	CSDH1.25P304ZG
1 1/2"	1.900	3.29	2.99	0.88	2.05	3/8"-16	CSDH1.5P304ZP	CSDH1.5P304ZG
2"	2.375	5.59	3.36	0.88	2.09	1/2"-13	CSDH2.0P304ZP	CSDH2.0P304ZG
2 1/2"	2.875	6.02	3.74	0.88	3.18	1/2"-13	CSDH2.5P304ZP	CSDH2.5P304ZG
3"	3.500	6.68	4.48	1.00	3.60	1/2"-13	CSDH3.0P304ZP	CSDH3.0P304ZG
4"	4.500	6.24	5.10	1.00	4.21	5/8"-11	CSDH4.0P304ZP	CSDH4.0P304ZG
6"	6.625	7.94	7.73	1.25	4.35	3/4"-10	CSDH6.0P304ZP	CSDH6.0T304ZG

WELD MOUNT - CSDW

Bottom plate is welded to mounting rod or directly to structure

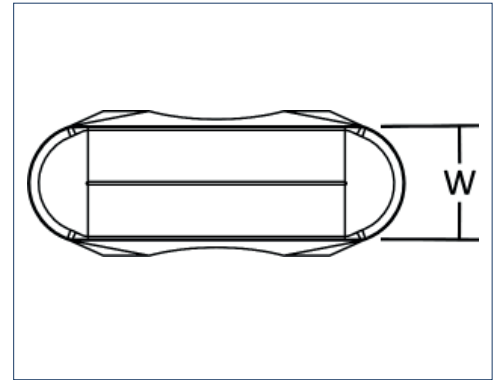
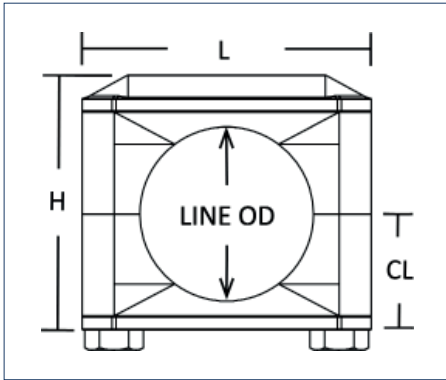


for 316 hardware substitute 304 with 316

Tube Size	Line OD	H	L	PLATES W	CL	Part Number (anchor/tight fit)	Part Number (guide/loose fit)
1/4"	0.25	1.29	1.93	0.75	0.79	CSDW0.25T304ZP	CSDW0.25T304ZG
3/8"	0.38	1.51	1.93	0.75	0.79	CSDW0.38T304ZP	CSDW0.38T304ZG
1/2"	0.50	1.73	1.93	0.75	0.79	CSDW0.50T304ZP	CSDW0.50T304ZG
3/4"	0.75	1.73	1.93	0.75	0.79	CSDW0.75T304ZP	CSDW0.75T304ZG
1"	1.00	1.73	1.93	0.75	0.79	CSDW1.0T304ZP	CSDW1.0T304ZG
1 1/2"	1.50	2.23	2.49	0.75	1.03	CSDW1.5T304ZP	CSDW1.5T304ZG
2"	2.00	2.75	2.99	0.88	1.31	CSDW2.0T304ZP	CSDW2.0T304ZG
2 1/2"	2.50	3.25	3.36	0.88	1.55	CSDW2.5T304ZP	CSDW2.5T304ZG
3"	3.00	3.97	3.99	0.88	1.91	CSDW3.0T304ZP	CSDW3.0T304ZG
4"	4.00	4.87	5.10	1.00	2.39	CSDW4.0T304ZP	CSDW4.0T304ZG
6"	6.00	6.69	7.26	1.25	3.36	CSDW6.0T304ZP	CSDW6.0T304ZG
Pipe Size	Line OD	H	L	PLATES W	CL	Part Number (anchor/tight fit)	Part Number (guide/loose fit)
1/2"	0.840	1.73	1.93	0.75	0.79	CSDW0.50P304ZP	CSDW0.50P304ZG
3/4"	1.050	1.73	1.93	0.75	0.79	CSDW0.75P304ZP	CSDW0.75P304ZG
1"	1.315	2.23	2.49	0.75	1.03	CSDW1.0P304ZP	CSDW1.0P304ZG
1 1/4"	1.660	2.75	2.99	0.88	1.31	CSDW1.25P304ZP	CSDW1.25P304ZG
1 1/2"	1.900	2.75	2.99	0.88	1.31	CSDW1.5P304ZP	CSDW1.5P304ZG
2"	2.375	3.25	3.36	0.88	1.55	CSDW2.0P304ZP	CSDW2.0P304ZG
2 1/2"	2.875	3.68	3.74	0.88	1.77	CSDW2.5P304ZP	CSDW2.5P304ZG
3"	3.500	4.15	4.48	1.00	2.06	CSDW3.0P304ZP	CSDW3.0P304ZG
4"	4.500	5.27	5.10	1.00	2.58	CSDW4.0P304ZP	CSDW4.0P304ZG
6"	6.625	7.19	7.73	1.25	3.60	CSDW6.0P304ZP	CSDW6.0P304ZG

BASE MOUNT - CSDBM

Weld mounting rod to bottom plate then to mounting plate or structure

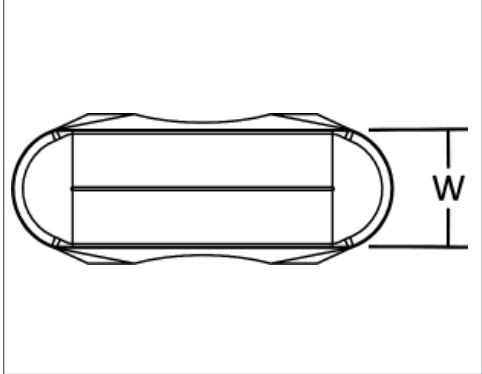
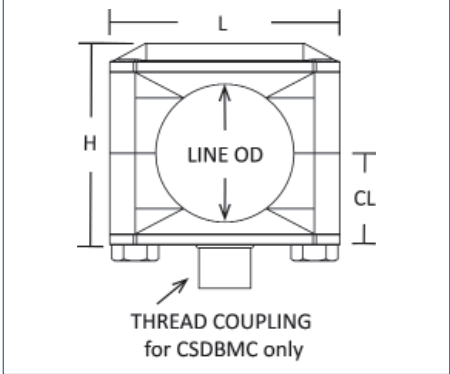


for 316 hardware substitute 304 with 316

Tube Size	Line OD	H	L	PLATES W	CL	Part Number (anchor/tight fit)	Part Number (guide/loose fit)
1/4"	0.25	1.70	1.93	0.75	0.73	CSDBM0.25T304ZP	CSDBM0.25T304ZG
3/8"	0.38	1.70	1.93	0.75	0.73	CSDBM0.38T304ZP	CSDBM0.38T304ZG
1/2"	0.50	1.70	1.93	0.75	0.73	CSDBM0.50T304ZP	CSDBM0.50T304ZG
3/4"	0.75	1.70	1.93	0.75	0.73	CSDBM0.75T304ZP	CSDBM0.75T304ZG
1"	1.00	1.70	1.93	0.75	0.73	CSDBM1.0T304ZP	CSDBM1.0T304ZG
1 1/2"	1.50	2.19	2.49	0.75	0.97	CSDBM1.5T304ZP	CSDBM1.5T304ZG
2"	2.00	2.69	2.99	0.88	1.25	CSDBM2.0T304ZP	CSDBM2.0T304ZG
2 1/2"	2.50	3.19	3.36	0.88	1.49	CSDBM2.5T304ZP	CSDBM2.5T304ZG
3"	3.00	3.97	3.99	0.88	1.85	CSDBM3.0T304ZP	CSDBM3.0T304ZG
Pipe Size	Line OD	H	L	PLATES W	CL	Part Number (anchor/tight fit)	Part Number (guide/loose fit)
1/2"	0.840	1.70	1.93	0.75	0.73	CSDBM0.50P304ZP	CSDBM0.50P304ZG
3/4"	1.050	1.70	1.93	0.75	0.73	CSDBM0.75P304ZP	CSDBM0.75P304ZG
1"	1.315	2.19	2.49	0.75	0.97	CSDBM1.0P304ZP	CSDBM1.0P304ZG
1 1/4"	1.660	2.69	2.99	0.88	1.25	CSDBM1.25P304ZP	CSDBM1.25P304ZG
1 1/2"	1.900	2.69	2.99	0.88	1.25	CSDBM1.5P304ZP	CSDBM1.5P304ZG
2"	2.375	3.19	3.36	0.88	1.49	CSDBM2.0P304ZP	CSDBM2.0P304ZG
2 1/2"	2.875	3.63	3.74	0.88	1.71	CSDBM2.5P304ZP	CSDBM2.5P304ZG

BASE MOUNT THREAD COUPLING MOUNT - CSDBMC

FOR ATTACHMENT: Use Syntiro's Shielded Rod, a solid rod with threaded end(s) or an all thread rod

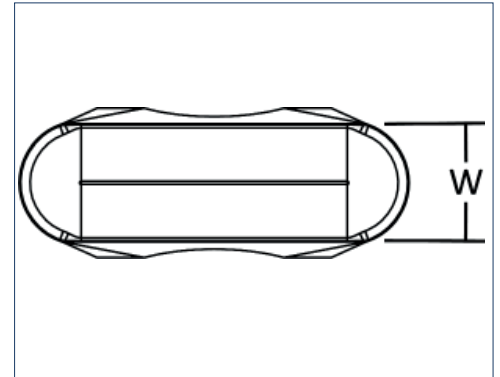
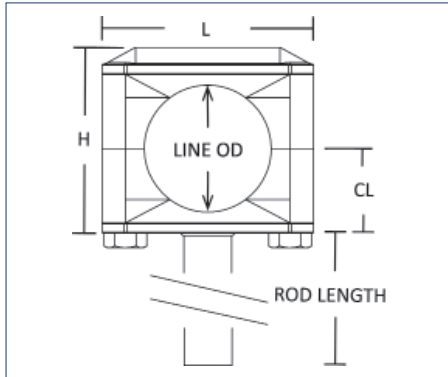


for 316 hardware substitute 304 with 316

Tube Size	Line OD	H	L	PLATES W	CL	Round Coupling		Part Number (anchor/tight fit)	Part Number (guide/loose fit)
						Height	Thread		
1/4"	0.25	1.70	1.93	0.75	0.73	0.47	3/8"-16	CSDBMC0.25T304ZP	CSDBMC0.25T304ZG
3/8"	0.38	1.70	1.93	0.75	0.73	0.47	3/8"-16	CSDBMC0.38T304ZP	CSDBMC0.38T304ZG
1/2"	0.50	1.70	1.93	0.75	0.73	0.47	3/8"-16	CSDBMC0.50T304ZP	CSDBMC0.50T304ZG
3/4"	0.75	1.70	1.93	0.75	0.73	0.47	3/8"-16	CSDBMC0.75T304ZP	CSDBMC0.75T304ZG
1"	1.00	1.70	1.93	0.75	0.73	0.47	3/8"-16	CSDBMC1.0T304ZP	CSDBMC1.0T304ZG
1 1/2"	1.50	2.19	2.49	0.75	0.97	0.47	3/8"-16	CSDBMC1.5T304ZP	CSDBMC1.5T304ZG
2"	2.00	2.69	2.99	0.88	1.25	0.47	3/8"-16	CSDBMC2.0T304ZP	CSDBMC2.0T304ZG
2 1/2"	2.50	3.19	3.36	0.88	1.49	0.59	1/2"-13	CSDBMC2.5T304ZP	CSDBMC2.5T304ZG
3"	3.00	3.97	3.99	0.88	1.85	0.59	1/2"-13	CSDBMC3.0T304ZP	CSDBMC3.0T304ZG
Pipe Size	Line OD	H	L	PLATES W	CL	Round Coupling		Part Number (anchor/tight fit)	Part Number (guide/loose fit)
						Height	Thread		
1/2"	0.840	1.70	1.93	0.75	0.73	0.47	3/8"-16	CSDBMC0.50P304ZP	CSDBMC0.50P304ZG
3/4"	1.050	1.70	1.93	0.75	0.73	0.47	3/8"-16	CSDBMC0.75P304ZP	CSDBMC0.75P304ZG
1"	1.315	2.19	2.49	0.75	0.97	0.47	3/8"-16	CSDBMC1.0P304ZP	CSDBMC1.0P304ZG
1 1/4"	1.660	2.69	2.99	0.88	1.25	0.47	3/8"-16	CSDBMC1.25P304ZP	CSDBMC1.25P304ZG
1 1/2"	1.900	2.69	2.99	0.88	1.25	0.47	3/8"-16	CSDBMC1.5P304ZP	CSDBMC1.5P304ZG
2"	2.375	3.19	3.36	0.88	1.49	0.59	1/2"-13	CSDBMC2.0P304ZP	CSDBMC2.0P304ZG
2 1/2"	2.875	3.63	3.74	0.88	1.71	0.59	1/2"-13	CSDBMC2.5P304ZP	CSDBMC2.5P304ZG

BASE MOUNT ROD MOUNT - CSDBMR

Hanger's rod is welded to mounting plate or structure (rod lengths can be supplied per specification)

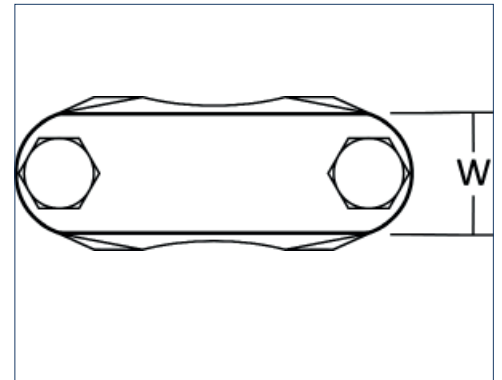
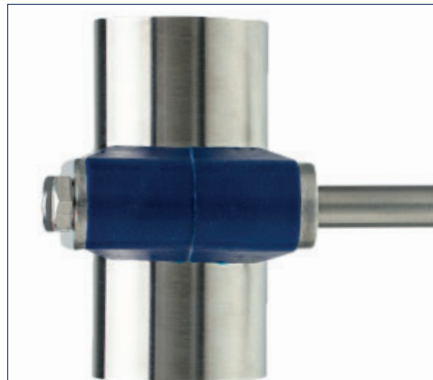
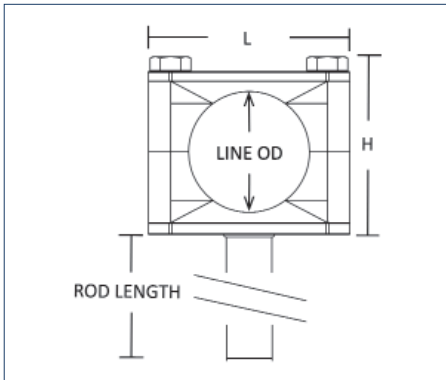


for 316 hardware substitute 304 with 316

Tube Size	Line OD	H	L	PLATES W	CL	Rod (stock length)		Part Number (anchor/tight fit)	Part Number (guide/loose fit)
						Length	OD		
1/4"	0.25	1.70	1.93	0.75	0.73	6	0.38	CSDBM6R0.25T304ZP	CSDBM6R0.25T304ZG
3/8"	0.38	1.70	1.93	0.75	0.73	6	0.38	CSDBM6R0.38T304ZP	CSDBM6R0.38T304ZG
1/2"	0.50	1.70	1.93	0.75	0.73	6	0.38	CSDBM6R0.50T304ZP	CSDBM6R0.50T304ZG
3/4"	0.75	1.70	1.93	0.75	0.73	6	0.38	CSDBM6R0.75T304ZP	CSDBM6R0.75T304ZG
1"	1.00	1.70	1.93	0.75	0.73	6	0.38	CSDBM6R1.0T304ZP	CSDBM6R1.0T304ZG
1 1/2"	1.50	2.19	2.49	0.75	0.97	6	0.38	CSDBM6R1.5T304ZP	CSDBM6R1.5T304ZG
2"	2.00	2.69	2.99	0.88	1.25	6	0.38	CSDBM6R2.0T304ZP	CSDBM6R2.0T304ZG
2 1/2"	2.50	3.19	3.36	0.88	1.49	6	0.50	CSDBM6R2.5T304ZP	CSDBM6R2.5T304ZG
3"	3.00	3.97	3.99	0.88	1.85	6	0.50	CSDBM6R3.0T304ZP	CSDBM6R3.0T304ZG
Tube Size	Line OD	H	L	PLATES W	CL	Rod (stock length)		Part Number (anchor/tight fit)	Part Number (guide/loose fit)
						Length	OD		
1/2"	0.840	1.70	1.93	0.75	0.73	6	0.38	CSDBM6R0.50P304ZP	CSDBM6R0.50P304ZG
3/4"	1.050	1.70	1.93	0.75	0.73	6	0.38	CSDBM6R0.75P304ZP	CSDBM6R0.75P304ZG
1"	1.315	2.19	2.49	0.75	0.97	6	0.38	CSDBM6R1.0P304ZP	CSDBM6R1.0P304ZG
1 1/4"	1.660	2.69	2.99	0.88	1.25	6	0.38	CSDBM6R1.25P304ZP	CSDBM6R1.25P304ZG
1 1/2"	1.900	2.69	2.99	0.88	1.25	6	0.38	CSDBM6R1.5P304ZP	CSDBM6R1.5P304ZG
2"	2.375	3.19	3.36	0.88	1.49	6	0.50	CSDBM6R2.0P304ZP	CSDBM6R2.0P304ZG
2 1/2"	2.875	3.63	3.74	0.88	1.71	6	0.50	CSDBM6R2.5P304ZP	CSDBM6R2.5P304ZG

ROD MOUNT - 6" ROD TO WELD PLATE MOUNT - CSDWR

(rod lengths also supplied per specification)

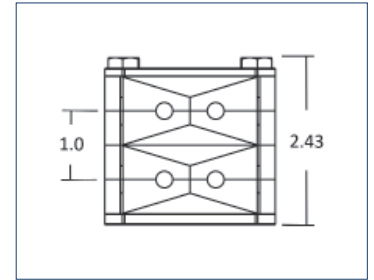
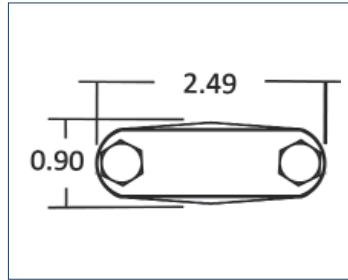
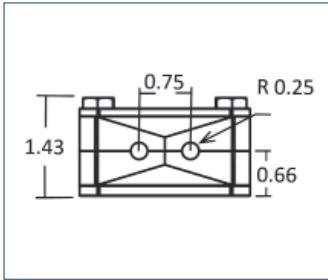


for 316 hardware substitute 304 with 316

Tube Size	Line OD	H	L	PLATES W	CL	Rod (stock length)		Part Number (anchor/tight fit)	Part Number (guide/loose fit)
						Length	OD		
1/4"	0.25	1.53	1.93	0.75	0.79	6	0.38	CSDW6R0.25T304ZP	CSDW6R0.25T304ZG
3/8"	0.38	1.53	1.93	0.75	0.79	6	0.38	CSDW6R0.38T304ZP	CSDW6R0.38T304ZG
1/2"	0.50	1.53	1.93	0.75	0.79	6	0.38	CSDW6R0.50T304ZP	CSDW6R0.50T304ZG
3/4"	0.75	1.53	1.93	0.75	0.79	6	0.38	CSDW6R0.75T304ZP	CSDW6R0.75T304ZG
1"	1.00	1.53	1.93	0.75	0.79	6	0.38	CSDW6R1.0T304ZP	CSDW6R1.0T304ZG
1 1/2"	1.50	2.03	2.49	0.75	1.03	6	0.38	CSDW6R1.5T304ZP	CSDW6R1.5T304ZG
2"	2.00	2.56	2.99	0.88	1.31	6	0.38	CSDW6R2.0T304ZP	CSDW6R2.0T304ZG
2 1/2"	2.50	3.02	3.36	0.88	1.55	6	0.50	CSDW6R2.5T304ZP	CSDW6R2.5T304ZG
3"	3.00	3.85	3.99	0.88	1.91	6	0.50	CSDW6R3.0T304ZP	CSDW6R3.0T304ZG
4"	4.00	4.72	5.10	1.00	2.39	6	0.50	CSDW6R4.0T304ZP	CSDW6R4.0T304ZG
6"	6.00	6.69	7.26	1.25	3.36	6	0.75	CSDW6R6.0T304ZP	CSDW6R6.0T304ZG
Pipe Size	Line OD	H	L	PLATES W	CL	Rod (stock length)		Part Number (anchor/tight fit)	Part Number (guide/loose fit)
1/2"	0.840	1.53	1.93	0.75	0.79	6	0.38	CSDW6R0.50P304ZP	CSDW6R0.50P304ZG
3/4"	1.050	1.53	1.93	0.75	0.79	6	0.38	CSDW6R0.75P304ZP	CSDW6R0.75P304ZG
1"	1.315	2.03	2.49	0.75	1.03	6	0.38	CSDW6R1.0P304ZP	CSDW6R1.0P304ZG
1 1/4"	1.660	2.56	2.99	0.88	1.31	6	0.38	CSDW6R1.25P304ZP	CSDW6R1.25P304ZG
1 1/2"	1.900	2.56	2.99	0.88	1.31	6	0.38	CSDW6R1.5P304ZP	CSDW6R1.5P304ZG
2"	2.375	3.02	3.36	0.88	1.55	6	0.50	CSDW6R2.0P304ZP	CSDW6R2.0P304ZG
2 1/2"	2.875	3.50	3.74	0.88	1.77	6	0.50	CSDW6R2.5P304ZP	CSDW6R2.5P304ZG
3"	3.500	4.05	4.48	1.00	2.06	6	0.50	CSDW6R3.0P304ZP	CSDW6R3.0P304ZG
4"	4.500	4.72	5.10	1.00	2.58	6	0.50	CSDW6R4.0P304ZP	CSDW6R4.0P304ZG
6"	6.625	7.19	7.73	1.25	3.60	6	0.75	CSDW6R6.0P304ZP	CSDW6R6.0P304ZG

INSTRUMENTATION LINE DUAL SUPPORT - CSDD

Offered in all CSD Series hardware mounting configurations

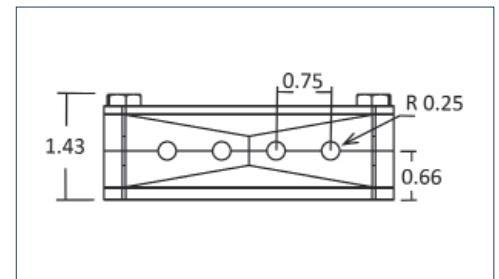
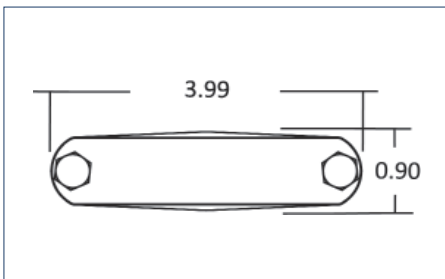


for 316 hardware substitute 304 with 316

Tube Size	Line OD	Part Number	Stack of 2 (up to 4)
1/4"	0.25	CSDWD0.25T2/304SA	CSDWD0.25T2/2/304SA

INSTRUMENTATION LINE QUAD SUPPORT - CSDQ

Offered in all CSD Series hardware mounting configurations



for 316 hardware substitute 304 with 316

Tube Size	Line OD	Part Number	Stack of 2 (up to 4, so /2/, /3/, and /4/)
1/4"	0.25	CSDWQ0.25T4/304SA	CSDWQ0.25T2/2/304SA
Cable	0.33	CSDWQ0.33T4/304SA	CSDWQ0.33T2/2/304SA
1/2"	0.50	CSDWQ0.50T4/304SA	CSDWQ0.50T2/2/304SA

INSTRUMENTATION LINE PLUGS ILP's



Tube Size	Line OD	Part Number
1/4"	0.25	ILP025
Cable	0.33	ILP033
1/2"	0.50	ILP050

PROCESS HEX HANGERS - PHH SERIES TUBE AND PIPE HANGERS

APPLICATIONS:

- Cleanrooms and mechanical areas; not limited to: biotech, pharmaceutical, food processing, beverage, dairy, cosmetic, chemical, water treatment, and semi-conductor industries.
- Low flow & low pressure systems with moderate vibration: WFI, SIP, CIP, process, utility & instrument lines, WFI, SIP, CIP, process, utilities & instrument lines

SIZES:

- Support Range: 1/4" - 6" Tube and 1/2" - 6" Pipe

FEATURES:

- ZERO PUDDLE Silicones inserts raised geometry facilitates drainage of liquids on vertical/riser lines creating maintenance uptime.

MATERIALS:

- 304 and 316 stainless steels
- ZERO PUDDLE inserts are FDA grade silicone rubber

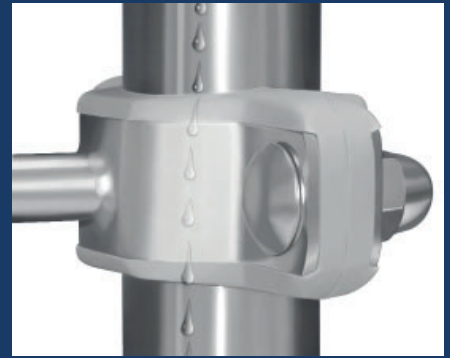
SPECIFICATIONS:

- Intermittent temperatures from -40F to 320F
- Continuous temperatures from -20F to 302F - Contact Syntiro with continuous application's environmental details

BENEFITS:

- Drainable and Cleanable
- There are no exposed threads or openings in hardware plates
- Carriage bolts lock into Hardware Frame;s square hole allowing installer to use a single wrench
- The antiquated Entrapping Hex Hanger requires two wrenches, increasing safety concerns and installation time
- Carriage bolts are reversible, so rounded drainable surface is always on the hangers topside
- Hanger threads match MSS 69 rod OD requirements
- Silicone inserts are resistant to high and low temperatures

ZERO PUDDLE INSERT

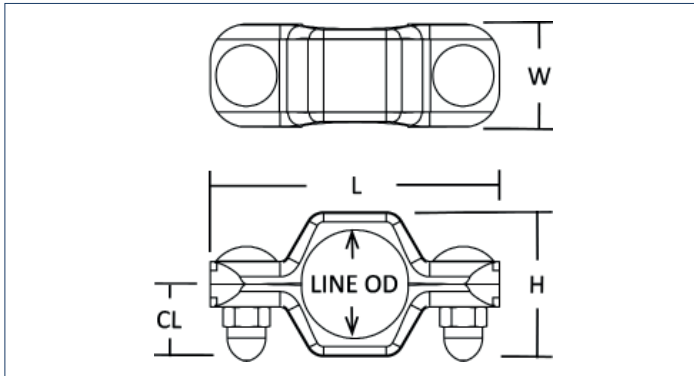


If you cannot see it, reach it, clean it, or sample it, this could be a concerning pathogen harbor point.

Refer to www.syntirocorp.com or call Syntiro for most up to date information

PROCESS HEX HANGER WELD MOUNT - PHHW

Mounting rod is welded to PHH's frame



for 316 hardware substitute 304 with 316

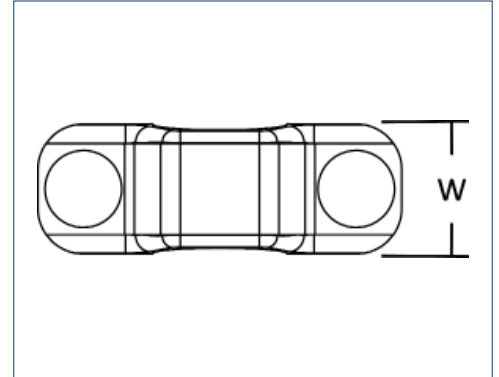
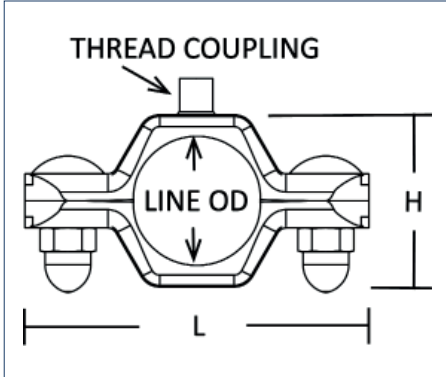
Tube Size	Line OD	H	L	W	CL	Part Number w/ Acorn Nut	Part Number w/ Lock Nut *
1/2"	0.50	1.15	2.80	1.10	0.58	PHHW0.50T304SAN	PHHW0.50T304SLN
3/4"	0.75	1.15	2.80	1.10	0.58	PHHW0.75T304SAN	PHHW0.75T304SLN
1"	1.00	1.45	3.00	1.10	0.73	PHHW1.0T304SAN	PHHW1.0T304SLN
1 1/2"	1.50	1.96	4.00	1.42	0.98	PHHW1.5T304SAN	PHHW1.5T304SLN
1 1/2"	1.50	2.16	4.00	1.42	1.08	PHHWH1.5T304SAN **	PHHWH1.5T304SLN **
2"	2.00	2.50	4.60	1.42	1.25	PHHW2.0T304SAN	PHHW2.0T304SLN
2"	2.00	2.70	4.60	1.42	1.35	PHHWH2.0T304SAN **	PHHWH2.0T304SLN **
2 1/2"	2.50	3.00	5.10	1.42	1.50	PHHW2.5T304SAN	PHHW2.5T304SLN
3"	3.00	3.50	5.60	1.42	1.75	PHHW3.0T304SAN	PHHW3.0T304SLN
4"	4.00	4.55	6.75	1.42	2.28	PHHW4.0T304SAN	PHHW4.0T304SLN
6"	6.00	6.49	9.00	1.48	3.25	PHHW6.0T304SAN	PHHW6.0T304SLN
Pipe Size	Line OD	H	L	W	CL	Part Number w/ Acorn Nut	Part Number w/ Lock Nut *
1/2"	0.840	1.45	3.00	1.10	0.73	PHHW0.50P304SAN	PHHW0.50P304SLN
3/4"	1.050	1.45	3.00	1.10	0.73	PHHW0.75P304SAN	PHHW0.75P304SLN
1"	1.315	1.96	4.00	1.42	0.98	PHHW1.0P304SAN	PHHW1.0P304SLN
1"	1.315	2.16	4.00	1.42	1.08	PHHWH1.0P304SAN **	PHHWH1.0P304SLN **
1 1/4"	1.660	2.50	4.60	1.42	1.25	PHHW1.25P304SAN	PHHW1.25P304SLN
1 1/4"	1.660	2.70	4.60	1.42	1.35	PHHWH1.25P304SAN **	PHHWH1.25P304SLN **
1 1/2"	1.900	2.50	4.60	1.42	1.25	PHHW1.5P304SAN	PHHW1.5P304SLN
1 1/2"	1.900	2.70	4.60	1.42	1.35	PHHWH1.5P304SAN **	PHHWH1.5P304SLN **
2"	2.375	3.00	5.10	1.42	1.50	PHHW2.0P304SAN	PHHW2.0P304SLN
2 1/2"	2.875	3.50	5.60	1.42	1.75	PHHW2.5P304SAN	PHHW2.5P304SLN
3"	3.500	4.13	6.33	1.42	2.07	PHHW3.0P304SAN	PHHW3.0P304SLN
4"	4.500	5.07	7.52	1.42	2.54	PHHW4.0P304SAN	PHHW4.0P304SLN
6"	6.625	7.20	9.25	1.74	3.60	PHHW6.0P304SAN	PHHW6.0P304SLN

** PHHWH's Hardware Frames are 7 Gauge 0.1874" - The increased thickness is preferred by some on site welders.

* Lock Nuts for lines with vibration

PROCESS HEX HANGER COUPLING - PHHC

FOR ATTACHMENT: Use Syntiro's Shielded Rod, solid rod with threaded end(s) or all thread rod



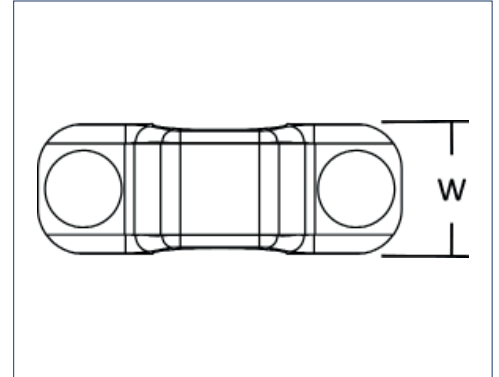
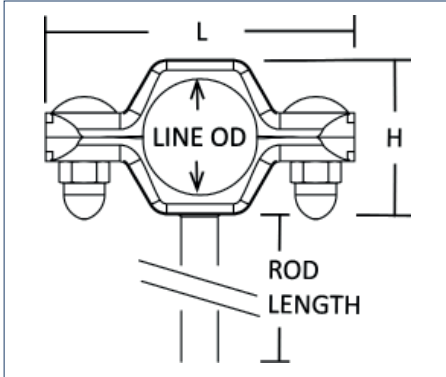
for 316 hardware substitute 304 with 316

Tube Size	Line OD	H	L	W	Round Coupling		Part Number w/ Acorn Nut	Part Number w/ Lock Nut *
					Height	Thread		
1/2"	0.50	1.15	2.80	1.10	0.50	3/8"-16	PHHC0.50T304SAN	PHHC0.50T304SLN
3/4"	0.75	1.15	2.80	1.10	0.50	3/8"-16	PHHC0.75T304SAN	PHHC0.75T304SLN
1"	1.00	1.45	3.00	1.10	0.50	3/8"-16	PHHC1.0T304SAN	PHHC1.0T304SLN
1 1/2"	1.50	1.96	4.00	1.42	0.50	3/8"-16	PHHC1.5T304SAN	PHHC1.5T304SLN
2"	2.00	2.50	4.60	1.42	0.50	3/8"-16	PHHC2.0T304SAN	PHHC2.0T304SLN
2 1/2"	2.50	3.00	5.10	1.42	0.59	1/2"-13	PHHC2.5T304SAN	PHHC2.5T304SLN
3"	3.00	3.50	5.60	1.42	0.59	1/2"-13	PHHC3.0T304SAN	PHHC3.0T304SLN
4"	4.00	4.55	6.75	1.42	0.59	1/2"-13	PHHC4.0T304SAN	PHHC4.0T304SLN
6"	6.00	6.49	9.00	1.48	0.88	3/4"-10	PHHC6.0T304SAN	PHHC6.0T304SLN
Pipe Size	Line OD	H	L	W	Round Coupling		Part Number w/ Acorn Nut	Part Number w/ Lock Nut *
					Height	Thread		
1/2"	0.840	1.45	3.00	1.10	0.50	3/8"-16	PHHC0.50P304SAN	PHHC0.50P304SLN
3/4"	1.050	1.45	3.00	1.10	0.50	3/8"-16	PHHC0.75P304SAN	PHHC0.75P304SLN
1"	1.315	1.96	4.00	1.42	0.50	3/8"-16	PHHC1.0P304SAN	PHHC1.0P304SLN
1 1/4"	1.660	2.50	4.60	1.42	0.50	3/8"-16	PHHC1.25P304SAN	PHHC1.25P304SLN
1 1/2"	1.900	2.50	4.60	1.42	0.50	3/8"-16	PHHC1.5P304SAN	PHHC1.5P304SLN
2"	2.375	3.00	5.10	1.42	0.59	1/2"-13	PHHC2.0P304SAN	PHHC2.0P304SLN
2 1/2"	2.875	3.50	5.60	1.42	0.59	1/2"-13	PHHC2.5P304SAN	PHHC2.5P304SLN
3"	3.500	4.13	6.33	1.42	0.59	1/2"-13	PHHC3.0P304SAN	PHHC3.0P304SLN
4"	4.500	5.07	7.52	1.42	0.59	1/2"-13	PHHC4.0P304SAN	PHHC4.0P304SLN
6"	6.625	7.20	9.25	1.74	0.88	3/4"-10	PHHC6.0P304SAN	PHHC6.0P304SLN

* Lock Nuts for lines with vibration

PROCESS HEX HANGER ROD MOUNT - PHHR

Hanger's rod is welded to mounting plate or structure
(rod lengths also supplied per specification)



for 316 hardware substitute 304 with 316

Tube Size	Line OD	H	L	W	Rod (stock length)		Part Number w/ Acorn Nut	Part Number w/ Lock Nut *
					Length	OD		
1/2"	0.50	1.15	2.80	1.10	6	0.38	PHH6R0.50T304SAN	PHH6R0.50T304SLN
3/4"	0.75	1.15	2.80	1.10	6	0.38	PHH6R0.75T304SAN	PHH6R0.75T304SLN
1"	1.00	1.45	3.00	1.10	6	0.38	PHH6R1.0T304SAN	PHH6R1.0T304SLN
1 1/2"	1.50	1.96	4.00	1.42	6	0.38	PHH6R1.5T304SAN	PHH6R1.5T304SLN
2"	2.00	2.50	4.60	1.42	6	0.38	PHH6R2.0T304SAN	PHH6R2.0T304SLN
2 1/2"	2.50	3.00	5.10	1.42	6	0.50	PHH6R2.5T304SAN	PHH6R2.5T304SLN
3"	3.00	3.50	5.60	1.42	6	0.50	PHH6R3.0T304SAN	PHH6R3.0T304SLN
4"	4.00	4.55	6.75	1.42	6	0.50	PHH6R4.0T304SAN	PHH6R4.0T304SLN
6"	6.00	6.40	9.00	1.48	6	0.75	PHH6R6.0T304SAN	PHH6R6.0T304SLN
Pipe Size	Line OD	H	L	W	Rod (stock length)		Part Number w/ Acorn Nut	Part Number w/ Lock Nut *
					Length	OD		
1/2"	0.840	1.45	3.00	1.10	6	0.38	PHH6R0.50P304SAN	PHH6R0.50P304SLN
3/4"	1.050	1.45	3.00	1.10	6	0.38	PHH6R0.75P304SAN	PHH6R0.75P304SLN
1"	1.315	1.96	4.00	1.42	6	0.38	PHH6R1.0P304SAN	PHH6R1.0P304SLN
1 1/4"	1.660	2.50	4.60	1.42	6	0.38	PHH6R1.25P304SAN	PHH6R1.25P304SLN
1 1/2"	1.900	2.50	4.60	1.42	6	0.38	PHH6R1.5P304SAN	PHH6R1.5P304SLN
2"	2.375	3.00	5.10	1.42	6	0.50	PHH6R2.0P304SAN	PHH6R2.0P304SLN
2 1/2"	2.875	3.50	5.60	1.42	6	0.50	PHH6R2.5P304SAN	PHH6R2.5P304SLN
3"	3.500	4.13	6.33	1.42	6	0.50	PHH6R3.0P304SAN	PHH6R3.0P304SLN
4"	4.500	5.07	7.52	1.42	6	0.63	PHH6R4.0P304SAN	PHH6R4.0P304SLN
6"	6.625	7.20	9.25	1.74	6	0.75	PHH6R6.0P304SAN	PHH6R6.0P304SLN

* Lock Nuts for lines with vibration

ZERO CAULK - ZC SERIES - ZCB BRACKET

Eliminates Caulk

MOUNTING:

- Blindsided - Insulated Metal Panels IMP's, Square Tubes, Framing... use Jack Nut/rievet nut
- Openside - Gypsum Board, Beams, Plates, Cement... use backside backing plate with lock nuts

APPLICATIONS:

- Cleanrooms and mechanical areas; not limited to: biotech, pharmaceutical, food processing, beverage, dairy, cosmetic, chemical, water treatment, and semi-conductor industries.
- Low flow & low pressure systems with moderate vibration: WFI, SIP, CIP, process, utility & instrument lines, WFI, SIP, CIP, process, utilities & instrument lines

SIZES:

- Support Range: 1/4" - 3" Tube and 1/2" - 2" Pipe for Copper and PVC Coated Pipe and EMT Conduit contact Syntiro
- Tight fit Anchors and loose fit Guides are offered

FEATURES:

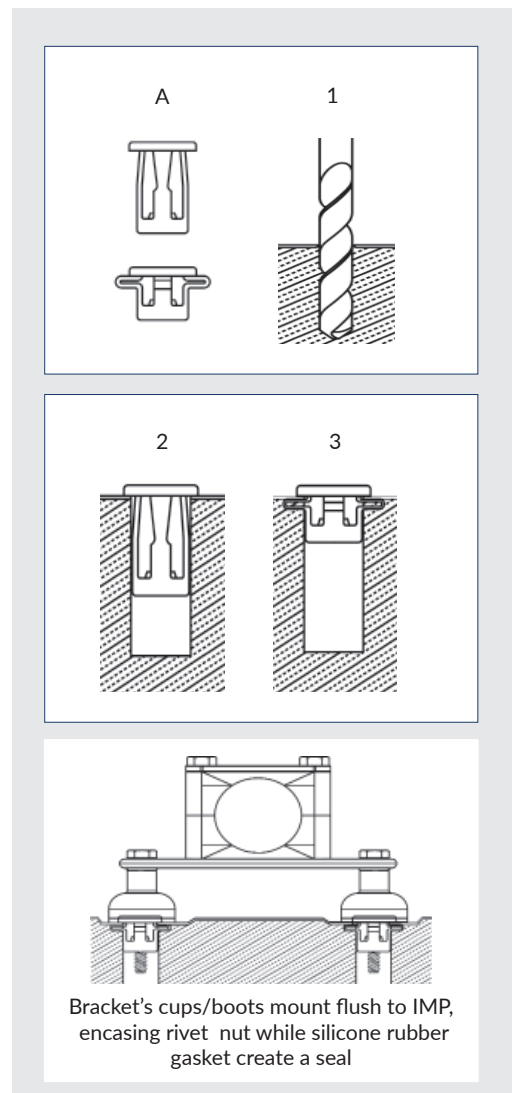
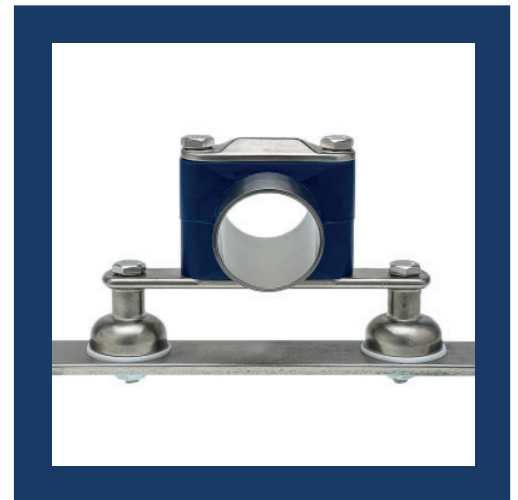
- **NEW** - Silver ion additive is blended in the FDA grade Silicone Rubber Gaskets, impeding bacterial, mold, fungus from forming on the gasket
- Silicone Rubber Gasket creates a drainable and cleanable seal to surface
- Silicone Rubber Gasket eliminates the use of caulk. Caulk will breakdown/crack creating voids
- Jack Nut's tensile strengths are over 820 pounds
- ZERO PUDDLE Silicones inserts raised geometry facilitates drainage of liquids on vertical/riser lines creating maintenance uptime.
- There are no exposed threads or openings

MATERIALS:

- 316 stainless steels

GRAPHICS: A FEW MINUTES PROCES

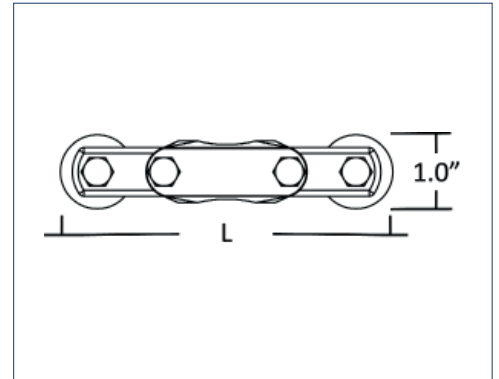
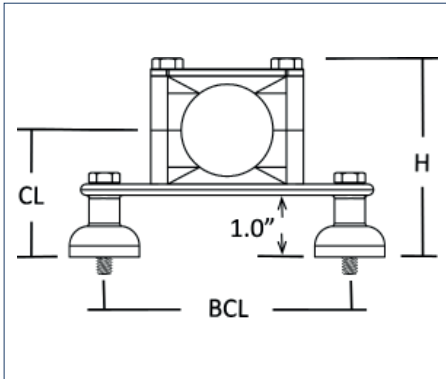
- A. Stock and actuated Rivet Nut
1. Drill 7/16" hole into IMP
2. Rivet nut placed in hole
3. Rivet nut actuated and secured to IMP via \$30 MARSON, M39043 MJN-2 JACK NUT INSERT TOOL



Refer to www.syntirocorp.com or call Syntiro for most up to date information

ZERO CAULK BRACKET - ZCB

Silicone rubber gasket seals to surfaces, no gaps



Tube Size	Line OD	H	L	W	CL	BCL	Part Number (anchor/tight fit)	Part Number (guide/loose fit)
1/4"	0.25	2.87	3.81	1.00	1.78	4.00	ZCB0.25T316ZP4.0	ZCB0.25T316ZG4.0
3/8"	0.38	2.87	4.77	1.00	1.88	4.00	ZCB0.38T316ZP4.0	ZCB0.38T316ZG4.0
1/2"	0.50	2.87	3.81	1.00	1.88	4.00	ZCB0.50T316ZP4.0	ZCB0.50T316ZG4.0
3/4"	0.75	2.87	4.77	1.00	1.88	4.00	ZCB0.75T316ZP4.0	ZCB0.75T316ZG4.0
1"	1.00	2.87	4.77	1.00	1.88	4.00	ZCB1.0T316ZP4.0	ZCB1.0T316ZG4.0
1 1/2"	1.50	3.37	4.19	1.00	2.13	3.19	ZCB1.5T316ZP	ZCB1.5T316ZG
1 1/2"	1.50	3.37	4.77	1.00	2.13	4.00	ZCB1.5T316ZP4.0	ZCB1.5T316ZG4.0
2"	2.00	3.89	4.44	1.00	2.38	3.44	ZCB2.0T316ZP	ZCB2.0T316ZG
2"	2.00	3.89	4.77	1.00	2.38	4.00	ZCB2.0T316ZP4.0	ZCB2.0T316ZG4.0
2 1/2"	2.50	4.39	4.48	1.00	2.58	4.50	ZCB2.5T316ZP	ZCB2.5T316ZG
3"	3.00	5.11	5.48	1.00	2.95	5.22	ZCB3.0T316ZP	ZCB3.0T316G
Pipe Size	Line OD	H	L	W	CL	BCL	Part Number (anchor/tight fit)	Part Number (guide/loose fit)
1/2"	0.840	2.87	4.77	1.00	1.875	4.00	ZCB0.50P316ZP4.0	ZCB0.50P316ZG4.0
3/4"	1.050	2.87	4.77	1.00	1.875	4.00	ZCB0.75P316A4.0	ZCB0.75P316ZG4.0
1"	1.315	3.37	4.19	1.00	2.125	3.19	ZCB1.0P316ZP	ZCB1.0P316ZG
1"	1.315	3.37	4.77	1.00	2.125	4.00	ZCB1.0P316ZP4.0	ZCB1.0P316ZG4.0
1 1/4"	1.660	3.89	4.44	1.00	2.375	3.44	ZCB1.25P316ZP	ZCB1.25P316ZG
1 1/4"	1.660	3.89	4.77	1.00	2.375	4.00	ZCB1.25P316ZP4.0	ZCB1.25P316ZG4.0
1 1/2"	1.900	3.89	4.44	1.00	2.375	3.44	ZCB1.5P316ZP	ZCB1.5P316ZG
1 1/2"	1.900	3.89	4.77	1.00	2.375	4.00	ZCB1.5P316ZP4.0	ZCB1.5P316ZG4.0
2"	2.375	4.39	4.48	1.00	2.575	4.50	ZCB2.0P316ZP	ZCB2.0P316ZG

ZERO CAULK - ZC SERIES - ZCUB UNIVERSAL BRACKET

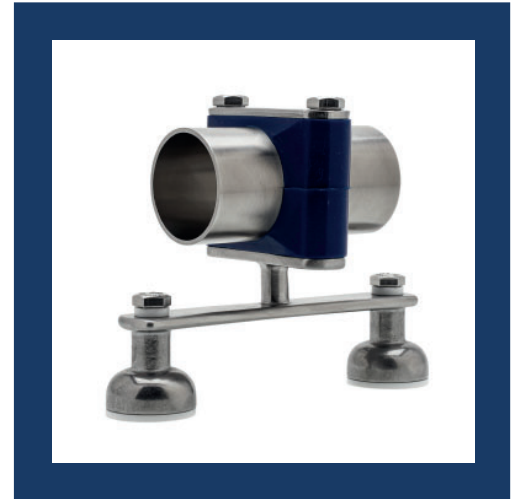
Eliminates Caulk

MOUNTING:

- Blindsight - Insulated Metal Panels IMP's, Square Tubes, Framing... use Jack Nut/rievet nut
- Openside - Gypsum Board, Beams, Plates, Cement... use backside backing plate with lock nuts

APPLICATIONS:

- Cleanrooms and mechanical areas; not limited to: biotech, pharmaceutical, food processing, beverage, dairy, cosmetic, chemical, water treatment, and semi-conductor industries.
- Low flow & low pressure systems with moderate vibration: WFI, SIP, CIP, process, utility & instrument lines, WFI, SIP, CIP, process, utilities & instrument lines



SIZES: PROCESS HEX HANGER - PHH STYLE

- Support Range: 1/4" - 3" Tube and 1/2" - 2" Pipe for Copper and PVC Coated Pipe and EMT Conduit contact Syntiro
- Tight fit Anchors

FEATURES:

- **NEW** - Silver ion additive is blended in the FDA grade Silicone Rubber Gaskets, impeding bacterial, mold, fungus from forming on the gasket
- Bracket's Cups/Boots encase while a Silicone Rubber Gasket creates a seal over the Jack Nut/rievet nut
- Silicone Rubber Gasket creates a drainable and cleanable seal to surface
- Silicone Rubber Gasket eliminates the use of caulk. Caulk will breakdown/crack creating voids
- Jack Nut's tensile strengths are over 820 pounds
- ZERO PUDDLE Silicones inserts raised geometry facilitates drainage of liquids on vertical/riser lines creating maintenance uptime.
- There are no exposed threads or openings

MATERIALS:

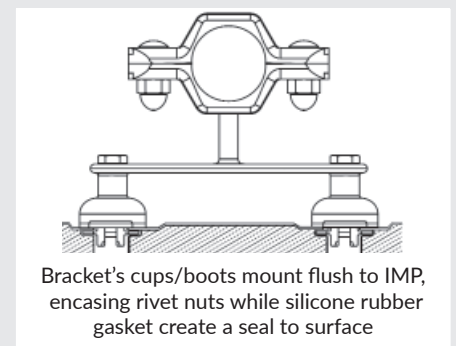
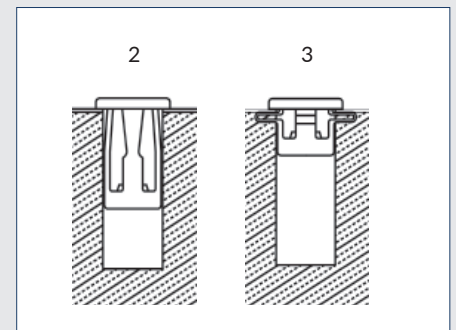
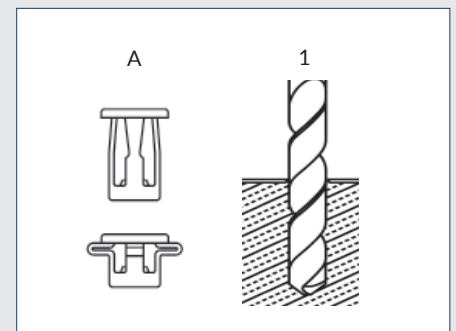
- 316 stainless steels

GRAPHICS: A FEW MINUTES PROCESS

A. Stock and actuated Rivet Nut

1. Drill 7/16" hole into IMP
2. Rivet nut placed in hole
3. Rivet nut actuated and secured to IMP via \$30

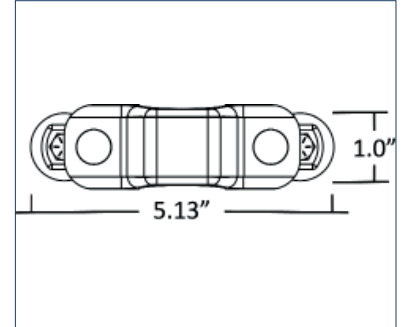
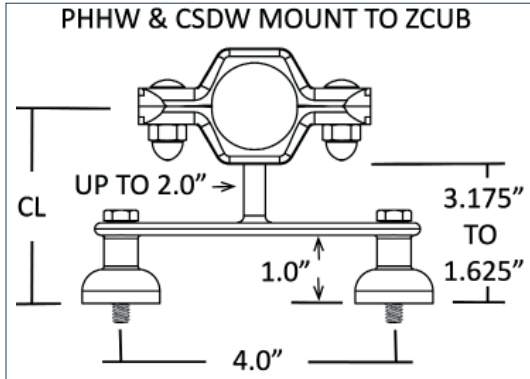
MARSON, M39043 MJN-2 JACK NUT INSERT TOOL



Refer to www.syntirocorp.com or call Syntiro for most up to date information

ZERO CAULK UNIVERSAL MOUNT BRACKET - ZCUB

Silicone rubber gasket seals to surfaces, no gaps



Tube Size	Line OD	Center Line **	Hanger Housing Type	Tube or Pipe Direction	Part Number (anchor/tight fit)
1/2"	0.50	???	When Building Part Number ZCUBC when CSDW is welded to rod & ZCUBP when PHHW is welded to rod	(P) Perpendicular/Criss Cross or (H) Horizontal/In Line to ZCUP's Mounting Bolts	ZCUBP0.50T316CL??P or H
3/4"	0.75	???			ZCUBP0.75T316CL??P or H
1"	1.00	???			ZCUBP1.0T316CL??P or H
1 1/2"	1.50	???			ZCUBP1.5T316CL??P or H
2"	2.00	???			ZCUBP2.0T316CL??P or H

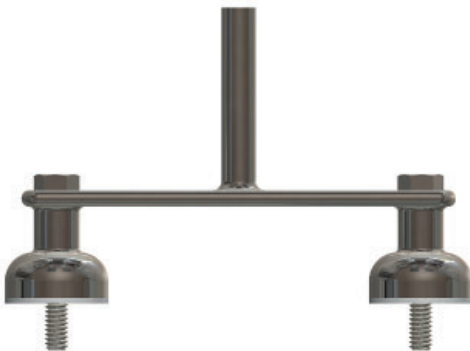
** CENTERLINE length ??? is supplied by customer in inches.

Supporting 1/2" OD Tube at a 2.5" CL with Tube's line of direction HORIZONTAL/IN-LINE with ZCUB's Mounting Bolts = ZCUBP0.50T316CL2.5H

Pipe Size	Line OD	Center Line **	Hanger Housing Type	Tube or Pipe Direction	Part Number (anchor/tight fit)
1/2"	0.840	???	When Building Part Number ZCUBC when CSDW is welded to rod & ZCUBP when PHHW is welded to rod	(P) Perpendicular/Criss Cross or (H) Horizontal/In Line to ZCUP's Mounting Bolts	ZCUBP0.50P316CL??P or H
3/4"	1.050	???			ZCUBP0.75P316CL??P or H
1"	1.315	???			ZCUBP1.0P316CL??P or H
1 1/4"	1.660	???			ZCUBP1.5P316CL??P or H
1 1/2"	1.900	???			ZCUBP2.0P316CL??P or H
2"	2.375	???			ZCUBP2.0P316CL??P or H

** CENTERLINE length ??? is supplied by customer in inches.

Supporting 1" Pipe at a 2.25" CL with pipe's Line of direction PERPENDICULAR/CRISS CROSS with ZCUB's Mounting Bolts = ZCUBP1.0P316CL2.25P



ZERO CAULK UNIVERSAL BRACKET w/ 2 GASKETS

Part Number:
ZCUB2R038-316

Rod Length - 2"
Rod OD - 0.375"

ZERO CAULK - ZC SERIES - ZCUP UNIVERSAL MOUNT PLATE

Eliminates Caulk, silicone rubber gasket seals to surfaces, no gaps

MOUNTING:

- Blindside - Insulated Metal Panels IMP's, Square Tubes, Framing... use Jack Nut/riivet nut
- Openside - Gypsum Board, Beams, Plates, Cement... use backside backing plate with lock nuts

APPLICATIONS:

- Cleanrooms and mechanical areas; not limited to: biotech, pharmaceutical, food processing, beverage, dairy, cosmetic, chemical, water treatment, and semi-conductor industries.
- Low flow & low pressure systems with moderate vibration: WFI, SIP, CIP, process, utility & instrument lines, WFI, SIP, CIP, process, utilities & instrument lines

SIZES: PROCESS HEX HANGER - PHH STYLE

- Support Range: 1/4" - 3" Tube and 1/2" - 2" Pipe for Copper and PVC Coated Pipe and EMT Conduit contact Syntiro
- Tight fit Anchors

FEATURES:

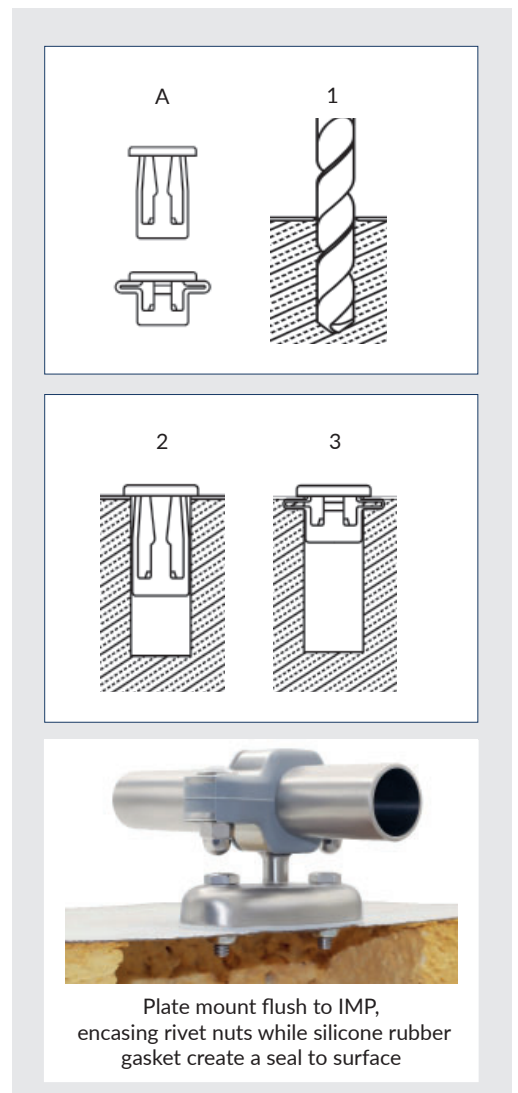
- **NEW** - Silver ion additive is blended in the FDA grade Silicone Rubber Gaskets, impeding bacterial, mold, fungus from forming on the gasket
- Bracket's Cups/Boots encase while a Silicone Rubber Gasket creates a seal over the Jack Nut/riivet nut
- Silicone Rubber Gasket creates a drainable and cleanable seal to surface
- Silicone Rubber Gasket eliminates the use of caulk. Caulk will breakdown/crack creating voids
- Jack Nut's tensile strengths are over 820 pounds
- ZERO PUDDLE Silicones inserts raised geometry facilitates drainage of liquids on vertical/riser lines creating maintenance uptime.
- There are no exposed threads or openings

MATERIALS:

- 316 stainless steels

GRAPHICS: A FEW MINUTES PROCESS

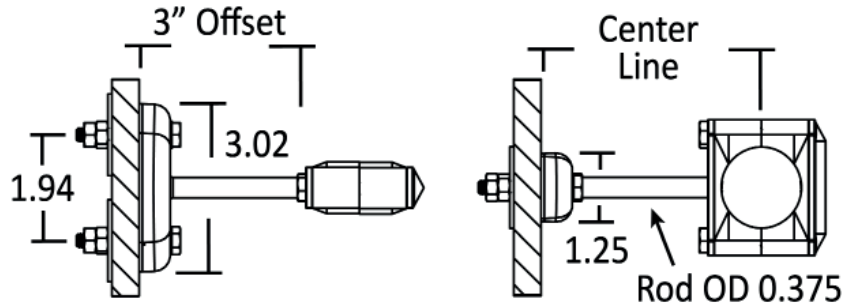
- A. Stock and actuated Rivet Nut
1. Drill 7/16" hole into IMP
2. Rivet nut placed in hole
3. Rivet nut actuated and secured to IMP via \$30 MARSON, M39043 MJN-2 JACK NUT INSERT TOOL



Refer to www.syntirocorp.com or call Syntiro for most up to date information

ZCUP UNIVERSAL MOUNT PLATE

- Mount CSD & PHH Series of hangers
- Rod length can be decreased or increased



Tube Size	Line OD	Center Line **	Hanger Housing Type	Tube or Pipe Direction	Using CSDW - Part Number (anchor/tight fit) Guides are also available
1/4"	0.25	???	When Building Part Number ZCUBC when CSDW is welded to rod & ZCUBP when PHHW is welded to rod	(P) Perpendicular/Criss Cross or (H) Horizontal/In Line to ZCUP's Mounting Bolts	ZCUPC0.25T316CL??P or H
3/8"	0.38	???			ZCUPC0.38T316CL??P or H
1/2"	0.50	???			ZCUPC0.50T316CL??P or H
3/4"	0.75	???			ZCUPC0.75T316CL??P or H
1"	1.00	???			ZCUPC1.0T316CL??P or H
1 1/2"	1.50	???			ZCUPC1.5T316CL??P or H
2"	2.00	???			ZCUPC2.0T316ZP??P or H
Pipe Size	Line OD	Center Line **	Hanger Housing Type	Tube or Pipe Direction	Using CSDW - Part Number (anchor/tight fit) Guides are also available
1/2"	0.840	???	When Building Part Number ZCUBC when CSDW is welded to rod & ZCUBP when PHHW is welded to rod	(P) Perpendicular/Criss Cross or (H) Horizontal/In Line to ZCUP's Mounting Bolts	ZCUPC0.50P316CL??P or H
3/4"	1.050	???			ZCUPC0.75P316CL??P or H
1"	1.315	???			ZCUPC1.0P316CL??P or H
1.25"	1.660	???			ZCUPC1.25P316CL??P or H
1 1/2"	1.900	???			ZCUPC1.5P316CL??P or H

** CENTERLINE length ??? is supplied by customer in inches.

Supporting 3/4" OD Tube at a 2.125" CL with Tube's line of direction HORIZONTAL/IN-LINE with ZCUB's Mounting Bolts = ZCUPC0.75T316CL2.125H

Tube Size	Line OD	Center Line **	Hanger Housing Type	Tube or Pipe Direction	Using PHHW - Part Number (anchor/tight fit)
1/2"	0.50	???	When Building Part Number ZCUBC when CSDW is welded to rod & ZCUBP when PHHW is welded to rod	(P) Perpendicular/Criss Cross or (H) Horizontal/In Line to ZCUP's Mounting Bolts	ZCUPP0.50T316CL??P or H
3/4"	0.75	???			ZCUPP0.75T316CL??P or H
1"	1.00	???			ZCUPP1.0T316CL??P or H
1 1/2"	1.50	???			ZCUPP1.5T316CL??P or H
2"	2.00	???			ZCUPP2.0T316CL??P or H
Pipe Size	Line OD	Center Line **	Hanger Housing Type	Tube or Pipe Direction	Using PHHW - Part Number (anchor/tight fit)
1/2"	0.840	???	When Building Part Number ZCUBC when CSDW is welded to rod & ZCUBP when PHHW is welded to rod	(P) Perpendicular/Criss Cross or (H) Horizontal/In Line to ZCUP's Mounting Bolts	ZCUPP0.50P316CL??P or H
3/4"	1.050	???			ZCUPP0.75P316CL??P or H
1"	1.315	???			ZCUPP1.0P316CL??P or H
1 1/2"	1.900	???			ZCUPP1.5P316CL??P or H

** CENTERLINE length ??? is supplied by customer in inches.

Supporting 1.25" Pipe at a 1.5" CL with Pipe's line of direction PERPENDICULAR/CRISS CROSS with ZCUB's Mounting Bolts = ZCUPP1.25P316CL1.25P

ZERO CAULK - Offset/Spacers - ZCOFF Series

Eliminates Caulk

MOUNTING:

- Blindsight - Insulated Metal Panels IMP's, Square Tubes, Framing... use Jack Nut/riivet nut
- Openside - Gypsum Board, Beams, Plates, Cement... use backside backing plate with lock nuts

APPLICATIONS:

- Cleanrooms and mechanical areas; not limited to: biotech, pharmaceutical, food processing, beverage, dairy, cosmetic, chemical, water treatment, and semi-conductor industries.
- Low flow & low pressure systems with moderate vibration: WFI, SIP, CIP, process, utility & instrument lines, WFI, SIP, CIP, process, utilities & instrument lines

SIZES:

- Support Range: 1/4" - 3" Tube and 1/2" - 2" Pipe for Copper and PVC Coated Pipe and EMT Conduit contact Syntiro
- Tight fit Anchors and loose fit Guides are offered

FEATURES:

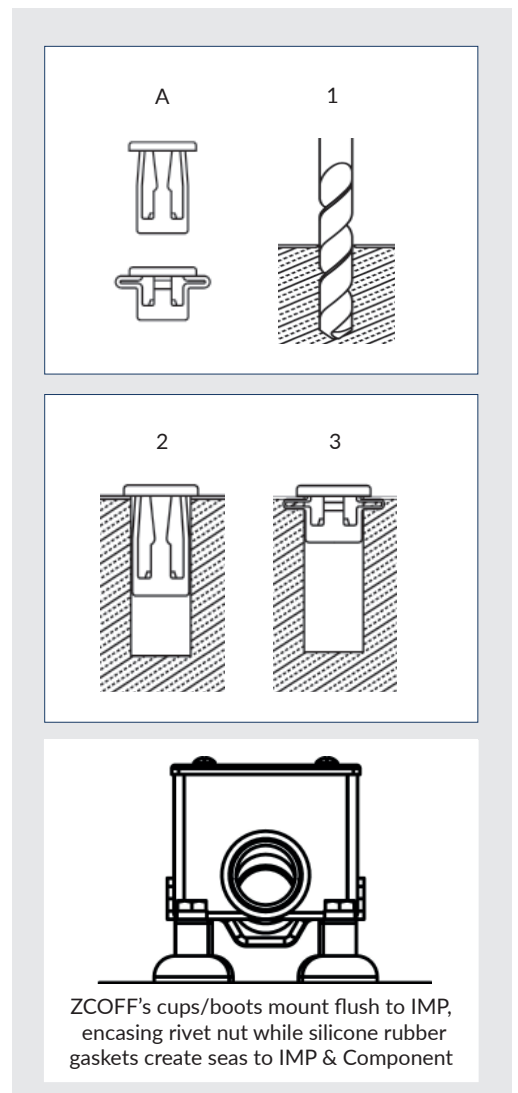
- **NEW** - Silver ion additive is blended in the FDA grade Silicone Rubber Gaskets, impeding bacterial, mold, fungus from forming on the gasket
- Silicone Rubber Gasket creates a drainable and cleanable seal to surface
- Silicone Rubber Gasket eliminates the use of caulk. Caulk will breakdown/crack creating voids
- Jack Nut's tensile strengths are over 820 pounds
- ZERO PUDDLE Silicones inserts raised geometry facilitates drainage of liquids on vertical/riser lines creating maintenance uptime.
- There are no exposed threads or openings

MATERIALS:

- 316 stainless steels

GRAPHICS: A FEW MINUTES PROCESS

- A. Stock and actuated Rivet Nut
1. Drill 7/16" hole into IMP
2. Rivet nut placed in hole
3. Rivet nut actuated and secured to IMP via \$30 MARSON, M390043 MJN-2 JACK NUT INSERT TOOL



Refer to www.syntirocorp.com or call Syntiro for most up to date information

ZERO CAULK 1" WALL TO COMPONENT - ZCOFF, OFFSET/SPACERS

Silicone rubber gasket seals to surfaces, no gaps



ZC050-1SWC-316

1" STANDOFF - WALL TO COMPONENT
UP TO 3/4" THREAD



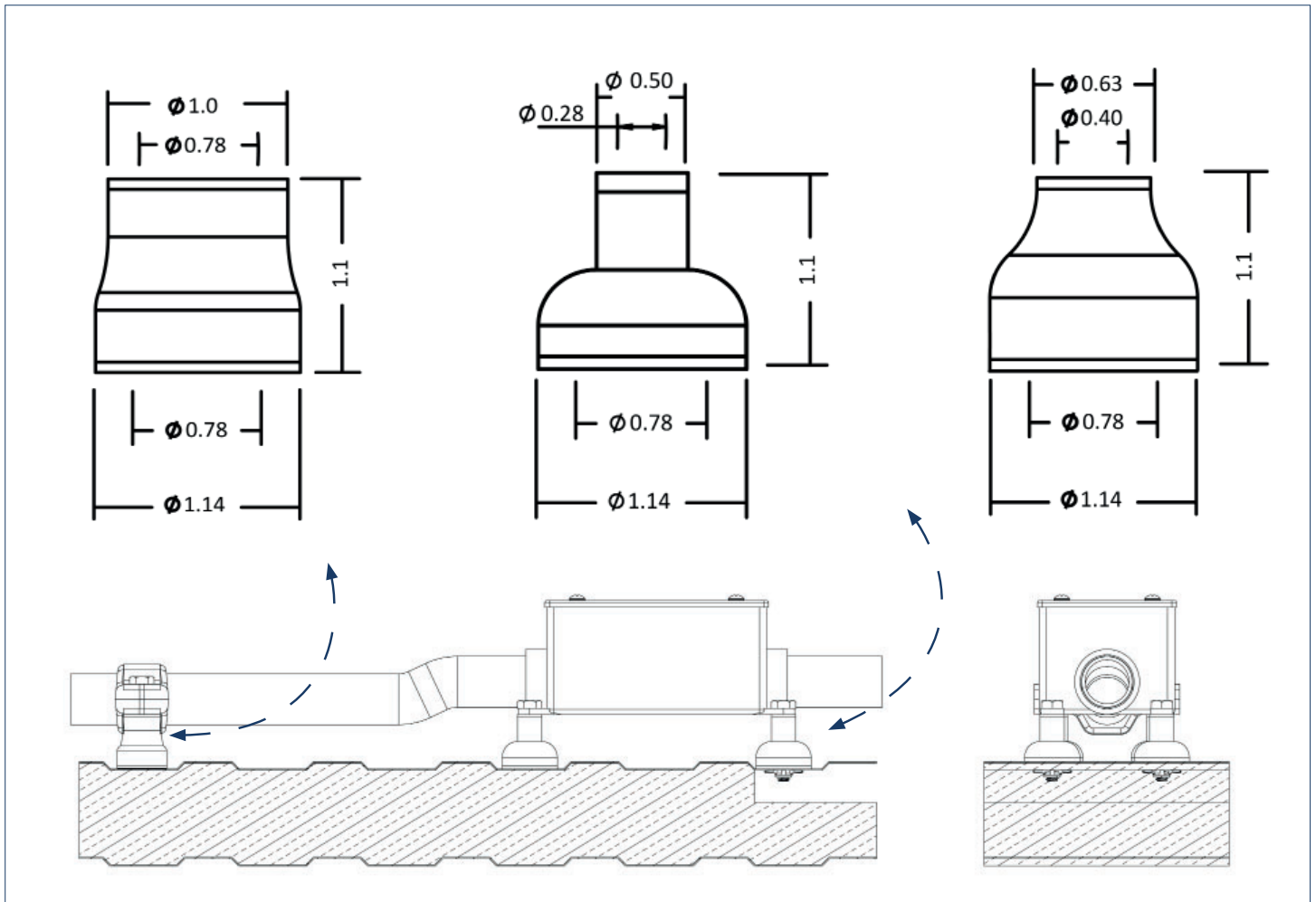
ZC025-1SWC-316

1" STANDOFF - WALL TO COMPONENT
UP TO 1/4" THREAD



ZC038-1SWC-316

1" STANDOFF - WALL TO COMPONENT
UP TO 1/4" THREAD



ZERO CAULK - 1" TUBE MOUNTING OFFSET SPACERS

ZC-1TOFF's Eliminating Caulking and Welds

MOUNTING:

- Blindside - Insulated Metal Panels IMP's, Square Tubes, Framing... use Jack Nut/rivet nut
- Openside - Gypsum Board, Beams, Plates, Cement... use backside backing plate with lock nuts

APPLICATIONS:

- Cleanrooms and mechanical areas; not limited to: biotech, pharmaceutical, food processing, beverage, dairy, cosmetic, chemical, water treatment, and semi-conductor industries.
- Low flow & low pressure systems with moderate vibration: WFI, SIP, CIP, process, utility & instrument lines, WFI, SIP, CIP, process, utilities & instrument lines



SIZES:

- Support Range: 1/4" - 4" Tube and 1/2" - 4" Pipe for Copper and PVC Coated Pipe and EMT Conduit contact Syntiro
- Tight fit Anchors and loose fit Guides are offered

FEATURES:

- Bracket's Cups/Boots encase while a Silicone Rubber Gasket creates a seal over the Jack Nut/rivet nut
- Silicone Rubber Gasket creates a drainable and cleanable seal to surface
- Silicone Rubber Gasket eliminates the use of caulk. Caulk will breakdown/crack creating voids
- Jack Nut's tensile strengths are over 820 pounds
- ZERO PUDDLE Silicones inserts raised geometry facilitates drainage of liquids on vertical/riser lines creating maintenance uptime.
- There are no exposed threads or openings

MATERIALS:

- 316 stainless steels

GRAPHICS: A FEW MINUTES PROCESS

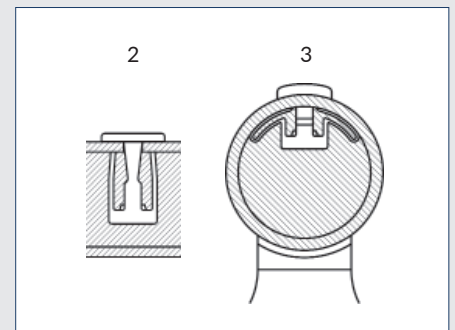
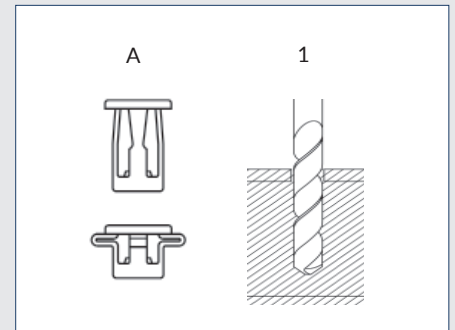
A. Stock and actuated Rivet Nut

1. Drill 7/16" hole into 1" Tube

2. Rivet nut placed in hole

3. Rivet nut actuated and secured to 1" Tube via \$30

MARSON, M39043 MJN-2 JACK NUT INSERT TOOL



Refer to www.syntirocorp.com or call Syntiro for most up to date information

ZERO CAULK - 1" TUBE CURVED BRACKET OFFSET SPACERS - ZC-1TOFF

Silicone rubber gasket seals to surfaces, no gaps



ZC050-1SW1T-316

1" STAND OFF - WALL TO 1" TUBE
UP TO 3/4" THREAD



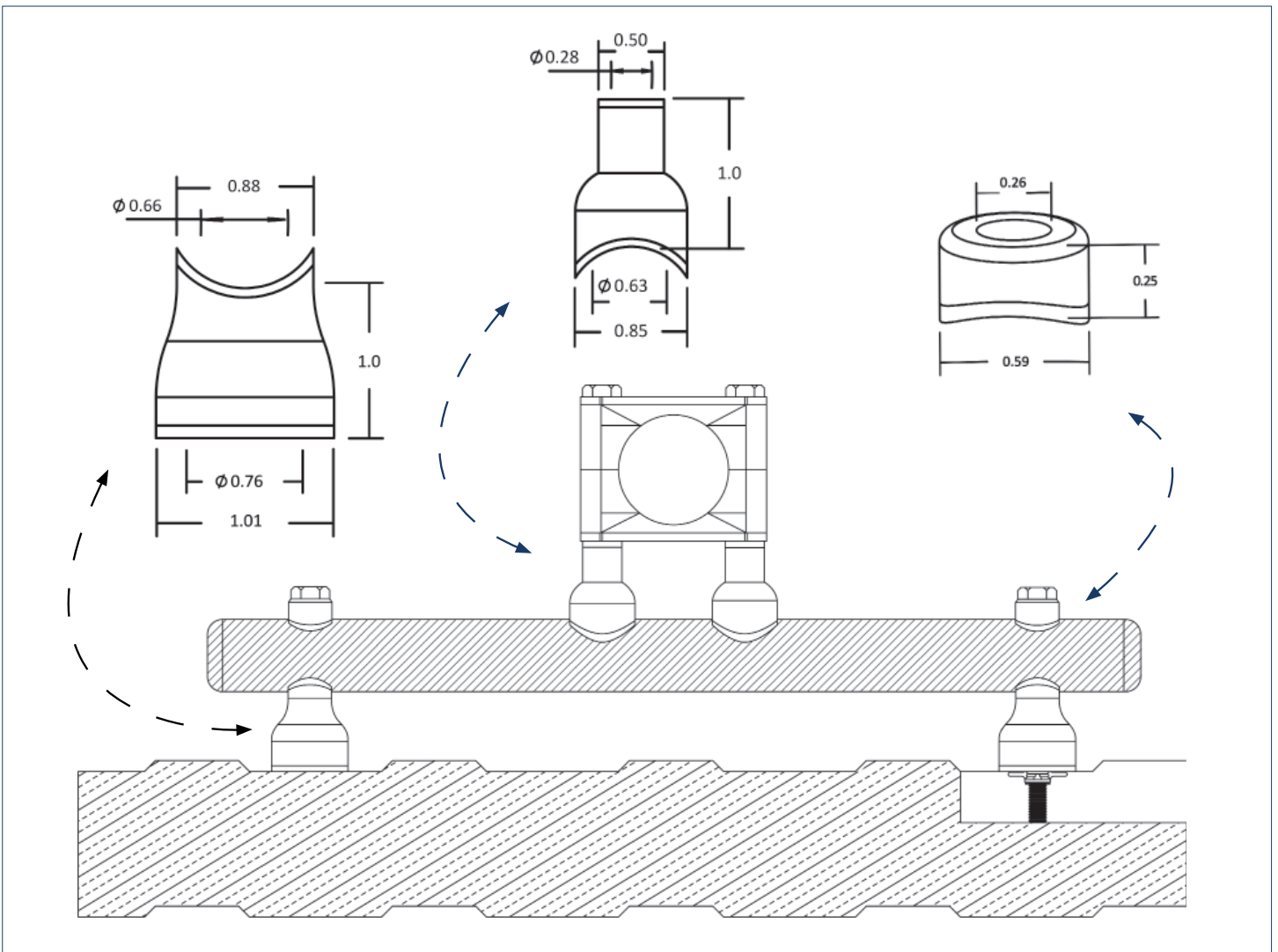
ZC025-1S1TC-316

1" STAND OFF - 1" TUBE TO
COMPONENT/HANGER
UP TO 1/4" THREAD



ZC025-WSHR1T-316

1" TUBE WASHER
UP TO 1/4" THREAD



ZERO CAULK - MULTI PIPE WALL MOUNTING BRACKET

Eliminates Caulking and Welds

MOUNTING:

- Blindside - Insulated Metal Panels IMP's, Square Tubes, Framing... use Jack Nut/rievet nut
- Openside - Gypsum Board, Beams, Plates, Cement... use backside backing plate with lock nuts

APPLICATIONS:

- Cleanrooms and mechanical areas; not limited to: biotech, pharmaceutical, food processing, beverage, dairy, cosmetic, chemical, water treatment, and semi-conductor industries.
- Low flow & low pressure systems with moderate vibration: WFI, SIP, CIP, process, utility & instrument lines, WFI, SIP, CIP, process, utilities & instrument lines

SIZES:

- Support Range: 1/4" - 4" Tube and 1/2" - 4" Pipe for Copper and PVC Coated Pipe and EMT Conduit contact Syntiro
- Tight fit Anchors and loose fit Guides are offered

FEATURES:

- Bracket's Cups/Boots encase while a Silicone Rubber Gasket creates a seal over the Jack Nut/rievet nut
- Silicone Rubber Gasket creates a drainable and cleanable seal to surface
- Silicone Rubber Gasket eliminates the use of caulk. Caulk will breakdown/crack creating voids
- Jack Nut's tensile strengths are over 820 pounds
- ZERO PUDDLE Silicones inserts raised geometry facilitates drainage of liquids on vertical/riser lines creating maintenance uptime.
- There are no exposed threads or openings

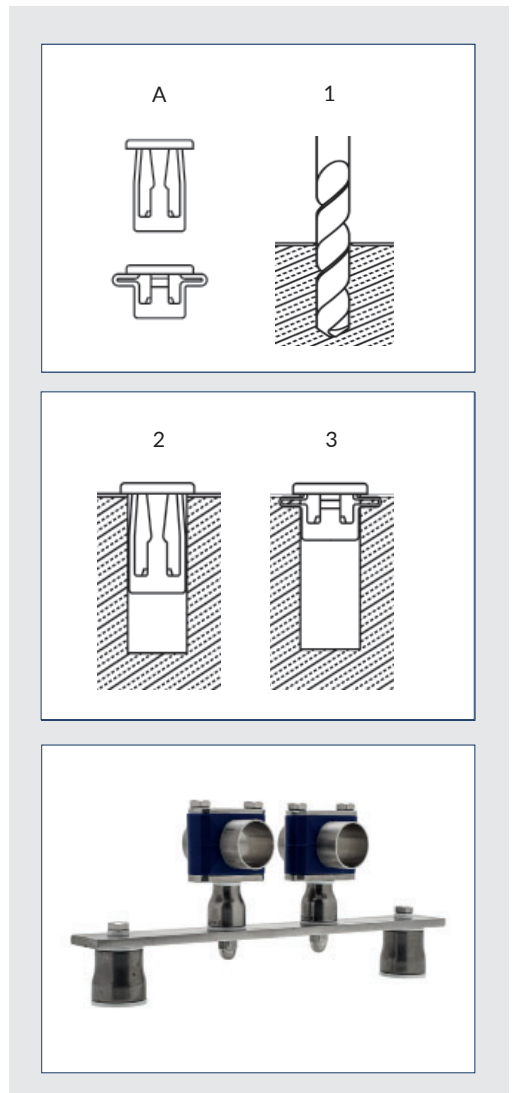
MATERIALS:

- 316 stainless steels

GRAPHICS: A FEW MINUTES PROCESS

A. Stock and actuated Rivet Nut

1. Drill 7/16" hole into 1" Tube
2. Rivet nut placed in hole
3. Rivet nut actuated and secured to 1" Tube via \$30 MARSON, M39043 MJN-2 JACK NUT INSERT TOOL



Refer to www.syntirocorp.com or call Syntiro for most up to date information

ZCMPB - ZERO CAULK - MULTI PIPE WALL MOUNTING BRACKET

Silicone rubber gasket seals to surfaces, no gaps



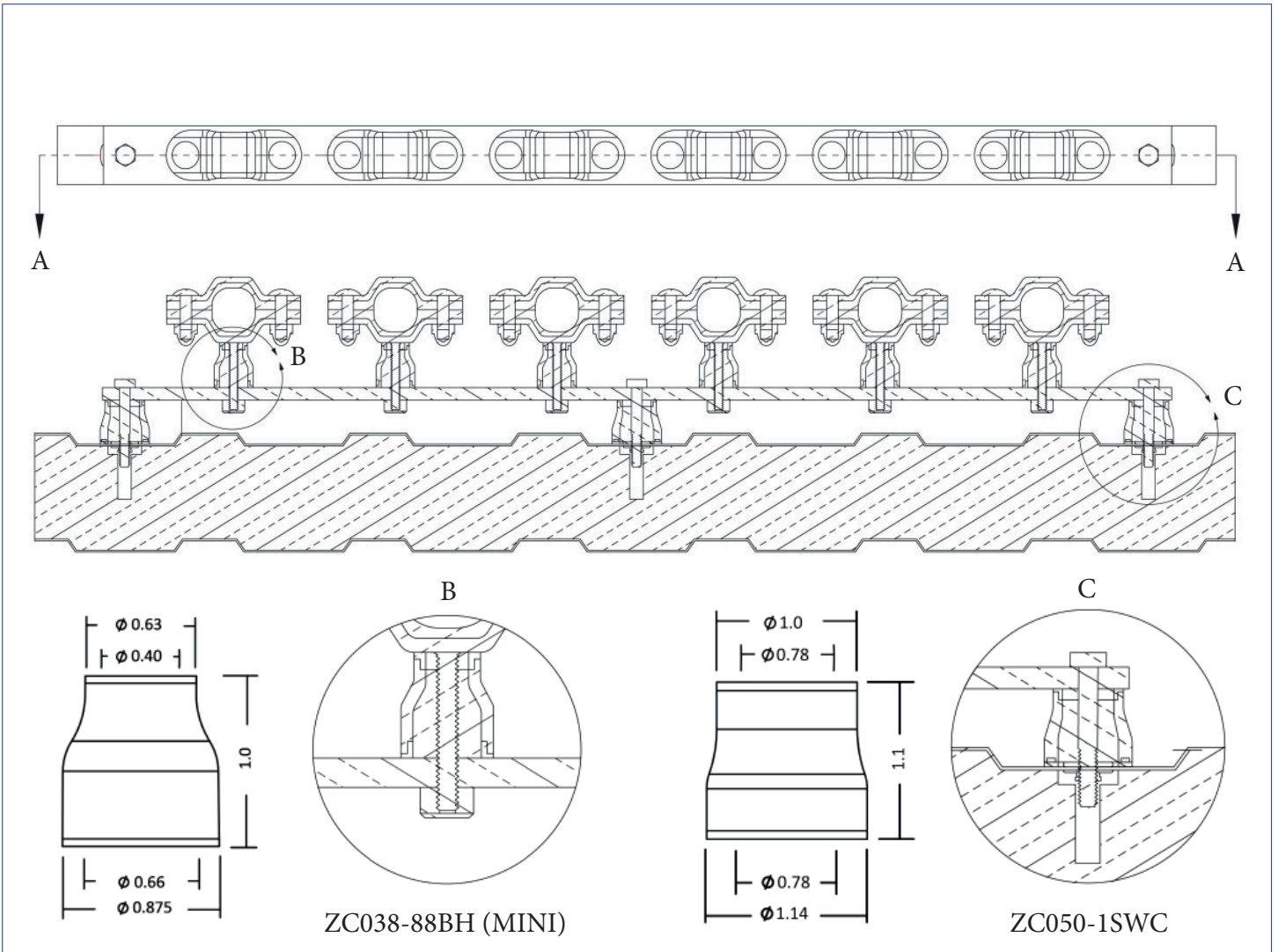
ZC038-88SBH-316 (MINI)
7/8" STAND OFF - BRACKET TO
HANGER, UP TO 3/8" THREAD



ZC1PP0.75T304ZP
ZERO CAULK - ZC SERIES - 1" PEDESTAL
w/ PHH HANGERS



ZC050-1SWC-316
1" STAND OFF - WALL TO COMPONENT
UP TO 1/2" THREAD



ZERO CAULK - ZC SERIES - 1" PEDESTAL w/ CSD HANGERS

Eliminates Caulk

MOUNTING:

- Blindsided - Insulated Metal Panels IMP's, Square Tubes, Framing... use Jack Nut/rievet nut
- Openside - Gypsum Board, Beams, Plates, Cement... use backside backing plate with lock nuts

APPLICATIONS:

- Cleanrooms and mechanical areas; not limited to: biotech, pharmaceutical, food processing, beverage, dairy, cosmetic, chemical, water treatment, and semi-conductor industries.
- Low flow & low pressure systems with moderate vibration: WFI, SIP, CIP, process, utility & instrument lines, WFI, SIP, CIP, process, utilities & instrument lines



SIZES:

- Support Range: 1/4" - 2" Tube and 1/2" - 1 1/2" Pipe for Copper and PVC Coated Pipe and EMT Conduit contact Syntiro
- Tight fit Anchors and loose fit Guides are offered

FEATURES:

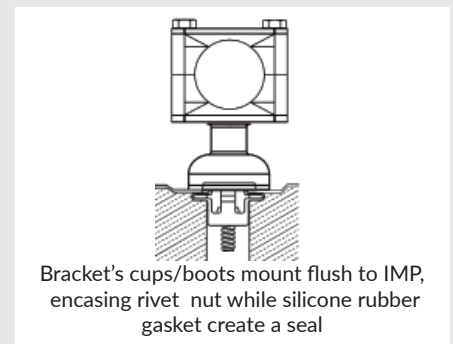
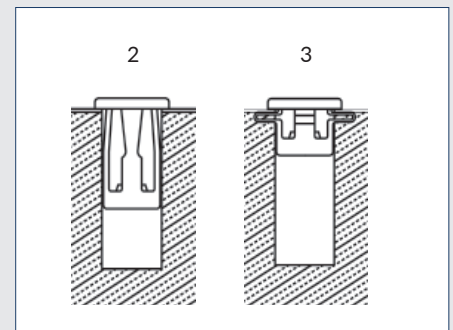
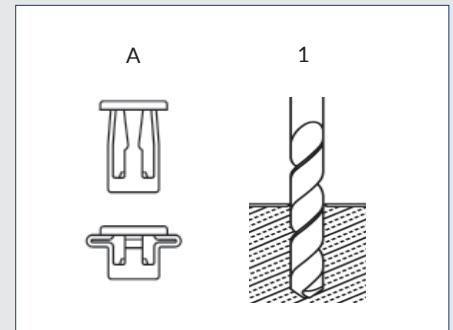
- **NEW** - Silver ion additive is blended in the FDA grade Silicone Rubber Gaskets, impeding bacterial, mold, fungus from forming on the gasket
- Silicone Rubber Gasket creates a drainable and cleanable seal to surface
- Silicone Rubber Gasket eliminates the use of caulk. Caulk will breakdown/crack creating voids
- Jack Nut's tensile strengths are over 820 pounds
- ZERO PUDDLE Silicones inserts raised geometry facilitates drainage of liquids on vertical/riser lines creating maintenance uptime.
- There are no exposed threads or openings

MATERIALS:

- 316 stainless steels

GRAPHICS: A FEW MINUTES PROCES

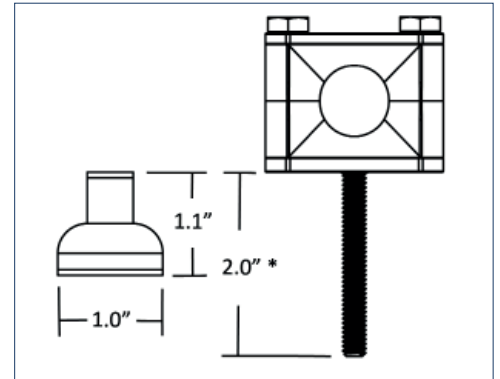
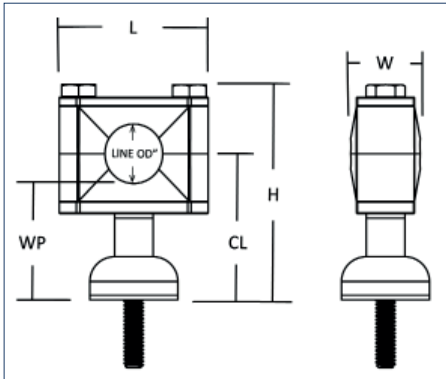
- A. Stock and actuated Rivet Nut
1. Drill 7/16" hole into IMP
2. Rivet nut placed in hole
3. Rivet nut actuated and secured to IMP via \$30 MARSON, M39043 MJN-2 JACK NUT INSERT TOOL



Refer to www.syntirocorp.com or call Syntiro for most up to date information

ZERO CAULK - ZC SERIES - 1" PEDESTAL w/ CSD HANGERS

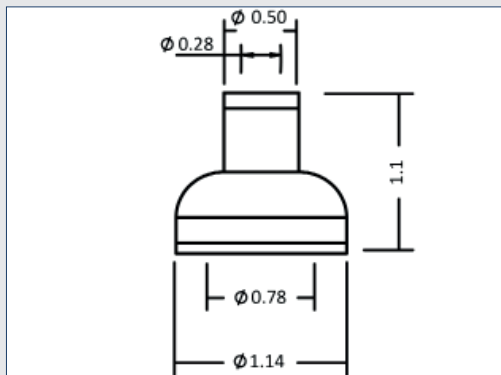
Silicone rubber gasket seals to surfaces, no gaps



* 2" section of 1/4"-20 thread is standard, other lengths are available

Tube Size	Line OD	H	L	W	CL	WP	Part Number (anchor/tight fit)	Part Number (guide/loose fit)
1/4"	0.25	2.83	1.93	0.75	1.89	1.77	ZC1PC0.25T304ZP	ZC1PC0.25T304ZG
3/8"	0.38	2.83	1.93	0.75	1.89	1.70	ZC1PC0.38T304ZP	ZC1PC0.38T304ZG
1/2"	0.50	2.83	1.93	0.75	1.89	1.64	ZC1PC0.50T304ZP	ZC1PC0.50T304ZG
3/4"	0.75	2.83	1.93	0.75	1.89	1.52	ZC1PC0.75T304ZP	ZC1PC0.75T304ZG
1"	1.00	2.83	1.93	0.75	1.89	1.39	ZC1PC1.0T304ZP	ZC1PC1.0T304ZG
1 1/2"	1.50	3.33	2.49	0.75	2.13	1.38	ZC1PC1.5T304ZP	ZC1PC1.50T304ZG
2"	2.00	3.85	2.99	0.88	2.41	1.41	ZC1PC2.0T304ZP *	ZC1PC2.0T304ZG *
Pipe Size	Line OD	H	L	W	CL	BCL	Part Number (anchor/tight fit)	Part Number (guide/loose fit)
1/2"	0.840	2.83	1.93	0.75	1.89	1.47	ZC1PC0.50P304ZP	ZC1PC0.50P304ZG
3/4"	1.050	2.83	1.93	0.75	1.89	1.37	ZC1PC0.75P304ZP	ZC1PC0.75P304ZG
1"	1.315	3.33	2.49	0.75	2.13	1.47	ZC1PC1.0P304ZP	ZC1PC1.0P304ZG
1 1/4"	1.660	3.85	2.99	0.88	2.41	1.58	ZC1PC1.25P304ZP *	ZC1PC.25P304ZG *
1 1/2"	1.900	3.75	2.99	0.88	2.31	1.36	ZC1PC1.5P304ZP *	ZC1PC1.5P304ZG *

* On long vertical runs, a ZCB should be considered for installation as an anchor



ZC025-1SWC-316
1" STANDOFF
WALL TO COMPONENT



ZERO CAULK - ZC SERIES - 1" PEDESTAL w/ PHH HANGERS

Eliminates Caulk

MOUNTING:

- Blindsided - Insulated Metal Panels IMP's, Square Tubes, Framing... use Jack Nut/rievet nut
- Openside - Gypsum Board, Beams, Plates, Cement... use backside backing plate with lock nuts

APPLICATIONS:

- Cleanrooms and mechanical areas; not limited to: biotech, pharmaceutical, food processing, beverage, dairy, cosmetic, chemical, water treatment, and semi-conductor industries.
- Low flow & low pressure systems with moderate vibration: WFI, SIP, CIP, process, utility & instrument lines, WFI, SIP, CIP, process, utilities & instrument lines

SIZES:

- Support Range: 1/4" - 2" Tube and 1/2" - 1 1/2" Pipe for Copper and PVC Coated Pipe and EMT Conduit contact Syntiro
- Tight fit Anchors and loose fit Guides are offered

FEATURES:

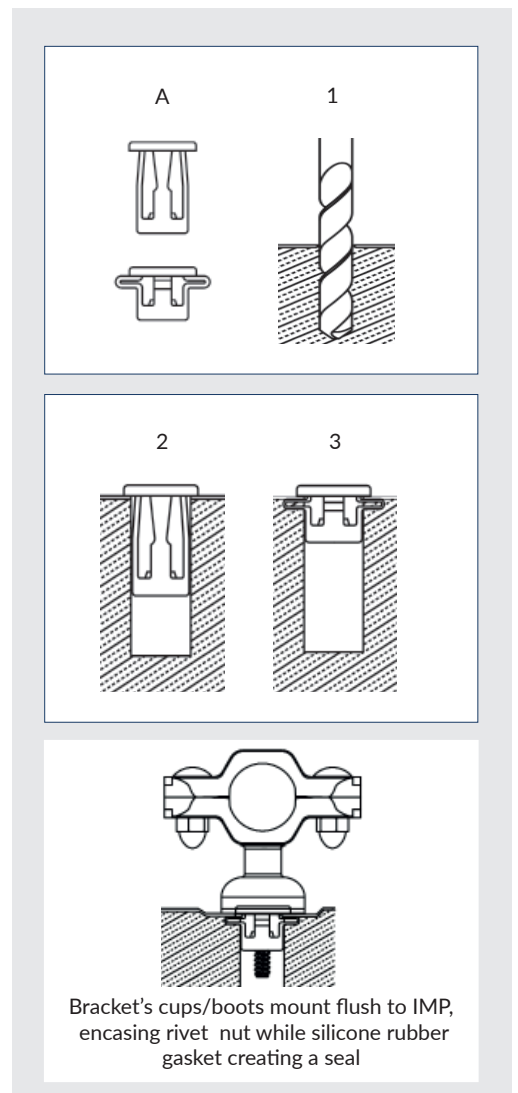
- **NEW** - Silver ion additive is blended in the FDA grade Silicone Rubber Gaskets, impeding bacterial, mold, fungus from forming on the gasket
- Silicone Rubber Gasket creates a drainable and cleanable seal to surface
- Silicone Rubber Gasket eliminates the use of caulk. Caulk will breakdown/crack creating voids
- Jack Nut's tensile strengths are over 820 pounds
- ZERO PUDDLE Silicones inserts raised geometry facilitates drainage of liquids on vertical/riser lines creating maintenance uptime.
- There are no exposed threads or openings

MATERIALS:

- 316 stainless steels

GRAPHICS: A FEW MINUTES PROCES

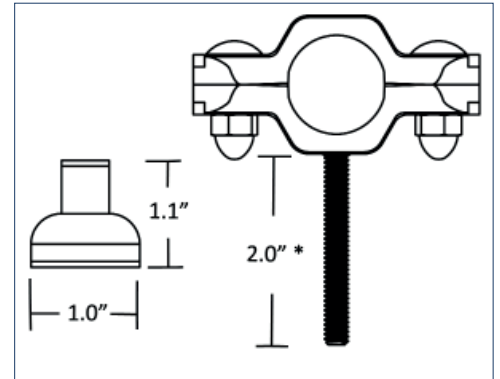
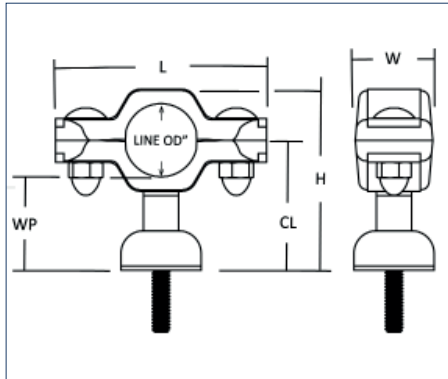
- A. Stock and actuated Rivet Nut
1. Drill 7/16" hole into IMP
2. Rivet nut placed in hole
3. Rivet nut actuated and secured to IMP via \$30 MARSON, M39043 MJN-2 JACK NUT INSERT TOOL



Refer to www.syntirocorp.com or call Syntiro for most up to date information

ZERO CAULK - ZC SERIES - 1" PEDESTAL w/ PHH HANGERS

Silicone rubber gasket seals to surfaces, no gaps

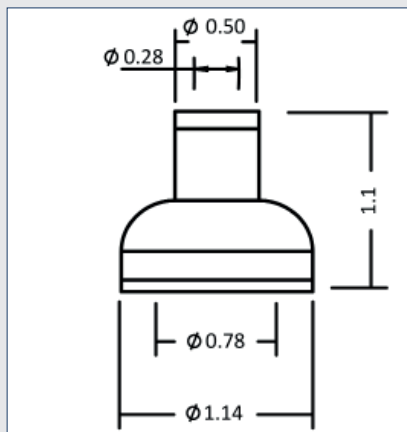


* 2" section of 1/4"-20 thread is standard, other lengths are available

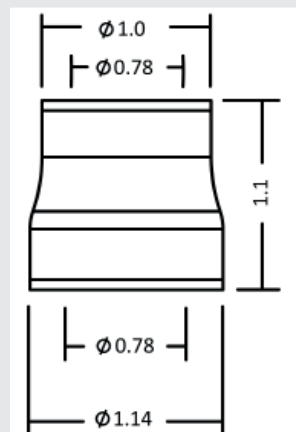
Tube Size	Line OD	H	L	W	CL	WP	Part Number (anchor/tight fit)
1/2"	0.50	2.25	2.80	1.10	1.68	1.33	ZC1PP0.50T304ZP
3/4"	0.75	2.25	2.80	1.10	1.68	1.21	ZC1PP0.75T304ZP
1"	1.00	2.55	3.00	1.10	1.83	1.23	ZC1PP1.0T304ZP
1 1/2"	1.50	3.06	4.00	1.42	2.08	1.23	ZC1PP1.5T304ZP
2"	2.00	3.60	4.60	1.42	2.35	1.25	ZC1PP2.0T304ZP *
Pipe Size	Line OD	H	L	W	CL	BCL	Part Number (anchor/tight fit)
1/2"	0.840	2.55	3.00	1.10	1.83	1.41	ZC1PP0.50P304ZP
3/4"	1.050	2.55	3.00	1.10	1.83	1.31	ZC1PP0.75P304ZP
1"	1.315	3.06	4.00	1.42	2.08	1.42	ZC1PP1.0P304ZP
1 1/4"	1.660	3.60	4.60	1.42	2.35	1.52	ZC1PP1.25P304ZP *
1 1/2"	1.900	3.60	4.60	1.42	2.35	1.40	ZC1PP1.5P304ZP *

* ZC050-1SWC-316 used as the pedestal/standoff

ZC025-1SWC-316
1" STANDOFF
WALL TO COMPONENT
FOR ZC1PP
UP TO
1 1/2" TUBE
&
UP TO
3/4" PIPE

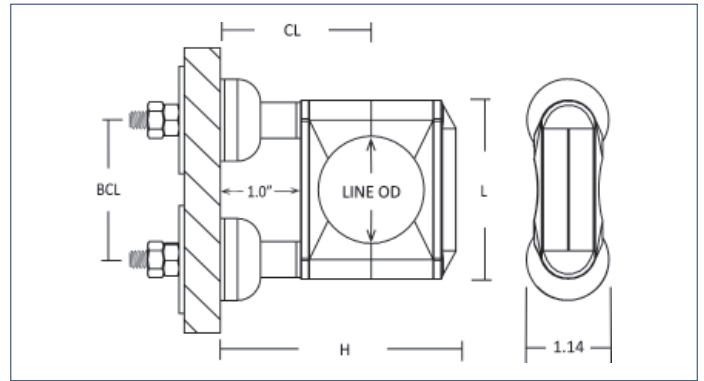


ZC050-1SWC-316
1" STANDOFF
WALL TO COMPONENT
FOR ZC1PP
2" TUBE
&
1 1/4" PIPE and
1 1/2" PIPE



ZERO CAULK BASE MOUNT - ZCBM

- Eliminating Caulk and Welds
- ZCUP mounts onto open sided walls
- Silicone rubber gasket seals to surface, no gaps
- Connected through back side of wall via 1/4"-20 thread
- 316 all thread rod which threads into top plate

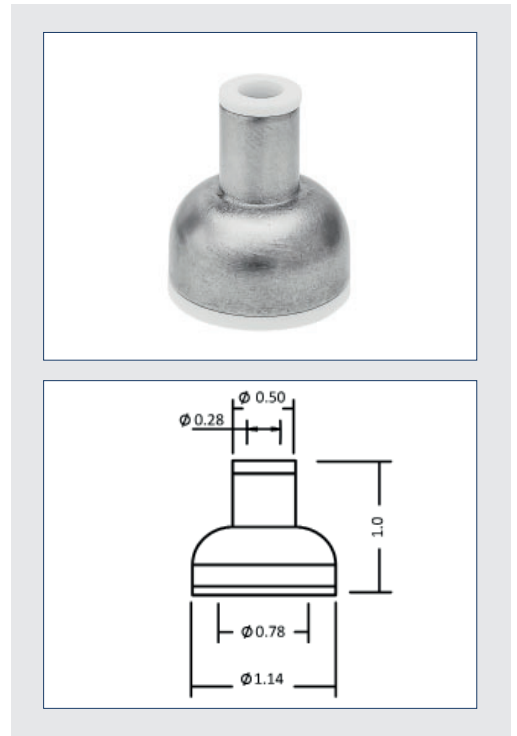


*** NO BOLT HEADS ***

ZC025-1SWC-316

1" STANDOFF - WALL TO COMPONENT

Tube Size	Line OD	BCL	H	L	CL	Part Number (anchor/tight fit)
1/4"	0.25	1.44	2.70	1.93	2.44	ZCBM0.25T316ZP
3/8"	0.38	1.44	2.70	1.93	2.44	ZCBM0.38T316ZP
1/2"	0.50	1.44	2.70	1.93	2.44	ZCBM0.50T316ZP
3/4"	0.75	1.44	2.70	1.93	2.44	ZCBM0.75T316ZP
1"	1.00	1.44	2.70	1.93	2.44	ZCBM1.0T316ZP
1 1/2"	1.50	1.94	3.19	2.49	2.94	ZCBM1.5T316ZP
2"	2.00	2.44	3.69	2.99	3.44	ZCBM2.0T316ZP
Pipe Size	Line OD	BCL	H	L	CL	Part Number (anchor/tight fit)
1/2"	0.840	1.44	2.70	1.93	2.44	ZCBM0.50P316ZP
3/4"	1.050	1.44	2.70	1.93	2.44	ZCBM0.75P316ZP
1"	1.315	1.94	3.19	2.49	2.94	ZCBM1.0P316ZP
1 1/4"	1.660	2.44	3.69	2.99	3.44	ZCBM1.25P316ZP
1 1/2"	1.900	2.44	3.69	2.99	3.44	ZCBM1.5P316ZP



SHIELDED ALL THREAD RODS - SROD

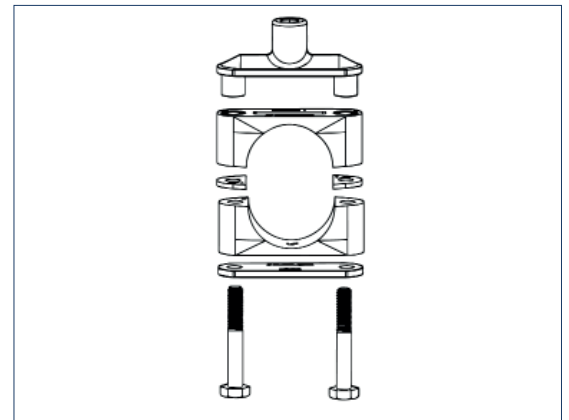
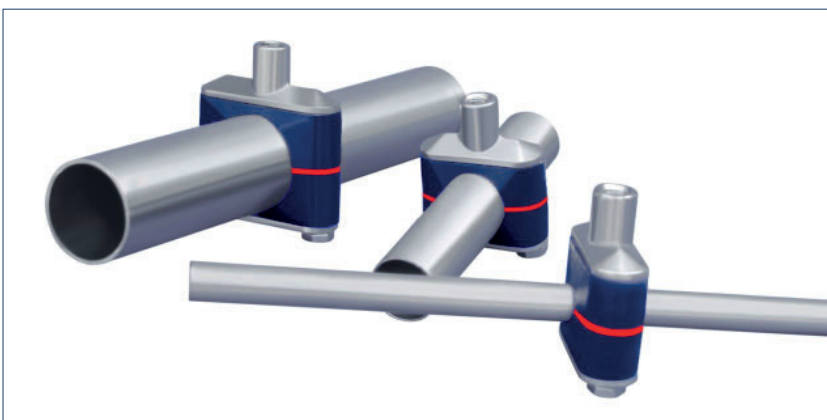
- Tight-fit, FDA approved, LDPE shield encases all thread rod
- LDPE sleeve can be cut to size with a utility knife
- Leave the LDPE sleeve a little long, as fasteners/ hangers are installed the LDPE compacts. Increasing the tight fit to the component
- Cost alternative to stainless tube sleeves. Eliminates the facing process of stainless tube's ends



Threaded Rod	PART NUMBER	DESCRIPTION
3/8"-16	SROD-038-304-LDPE-GRAY	Shielded Rod, 3/8"-16, 6 Feet Long, 304, LDPE Sleeve, Gray
1/2"-13	SROD-050-304-LDPE-GRAY	Shielded Rod, 1/2"-13, 6 Feet Long, 304, LDPE Sleeve, Gray
5/8"-11	SROD-063-304-LDPE-GRAY	Shielded Rod, 5/8"-11, 6 Feet Long, 304, LDPE Sleeve, Gray
3/8"-16	SROD-038-ZINC-LDPE-GRAY	Shielded Rod, 3/8"-16, 6 Feet Long, ZINC, LDPE Sleeve, Gray
1/2"-13	SROD-050-ZINC-LDPE-GRAY	Shielded Rod, 1/2"-13, 6 Feet Long, ZINC, LDPE Sleeve, Gray
5/8"-11	SROD-063-ZINC-LDPE-GRAY	Shielded Rod, 5/8"-11, 6 Feet Long, ZINC, LDPE Sleeve, Gray

CSD GUIDES

- Allows Tube and Pipe to freely expand and contract during thermal cycling





Syntiro Dynamics



**WORLD LEADING HYGIENIC EQUIPMENT
MANUFACTURERS “HANG WITH THE BEST”**

5033 Industrial Rd., Building 6, Farmingdale
NJ 07727-3946 | T: 732-377-3307 | E: sales@syntirocorp.com
Website: www.syntirocorp.com

U.S. Pat. No. US 8,596,589 B2 - US 9,033,289 B2 - US 9,038,968 B2 with other US Patents Pending

Cat. GPPC0923