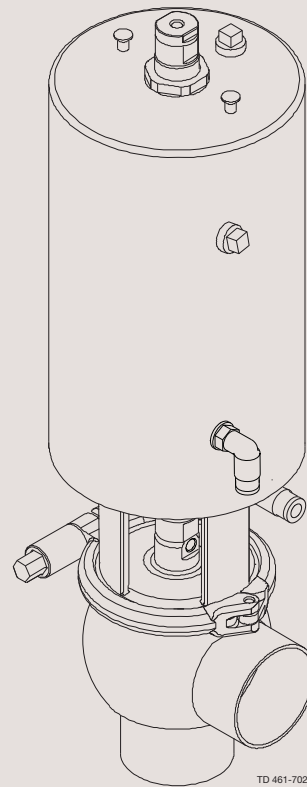
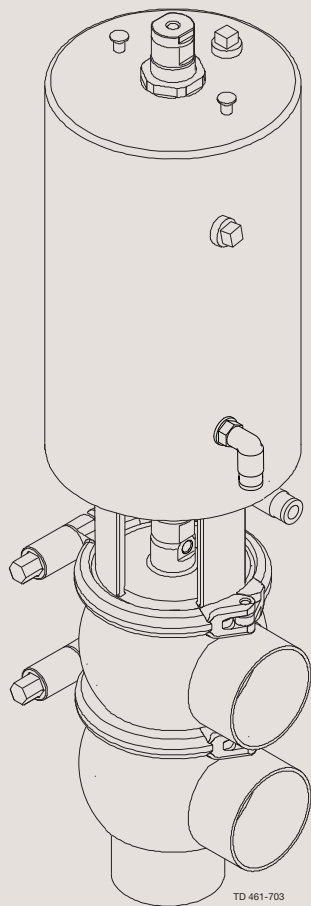




Spare Parts

Unique SSV - Two Step, maintainable actuator



The information herein is correct at the time of issue but may be subject to change without prior notice

1. Important information	4
2. Shut-off valve - TR2	6
3. Change-over valve - TR2	10
4. Shut-off valve - elastomer plug seal	14
5. Change-over valve - elastomer plug seal	18
6. Mounting tools	22

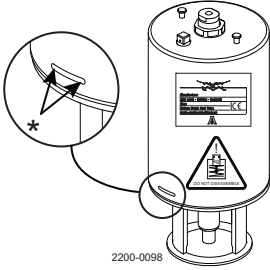
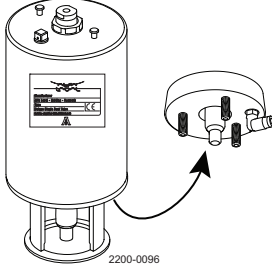

1 Important information

Different actuator types for the SSV valve

In June 2016 the below change was implemented and the "removable yoke with bolts" version is thereby phased out and replaced by the "yoke without bolts" version.

NOTE

It is important to check for warnings marked on the actuator when servicing an actuator- see below table.

Actuator type	Non-maintable actuator Spring under load and can NOT be opened  *) Lock wire opening is locked, when warning is marked on actuator	Fully maintainable actuator Spring cage and can be opened 	Fully maintainable actuator Spring cage and can be opened 
Yoke type	Non-removable yoke	"Removable yoke with bolts". If the yoke with bolts is damaged it has to be replaced by the "yoke without bolts"	"Yoke without bolts"
Service	Not possible to service internally (it is not possible to change piston o-rings)	Yes	Yes
Marked with warnings	Yes	No	No
Year of production	From 2006	From 2006 - June 2016	From June 2016

Shut-off valve - TR2

If the actuator is marked with a danger warning do **NOT** attempt to cut the actuator open.



Do **NOT** attempt to disassemble the actuator due to spring under load danger!

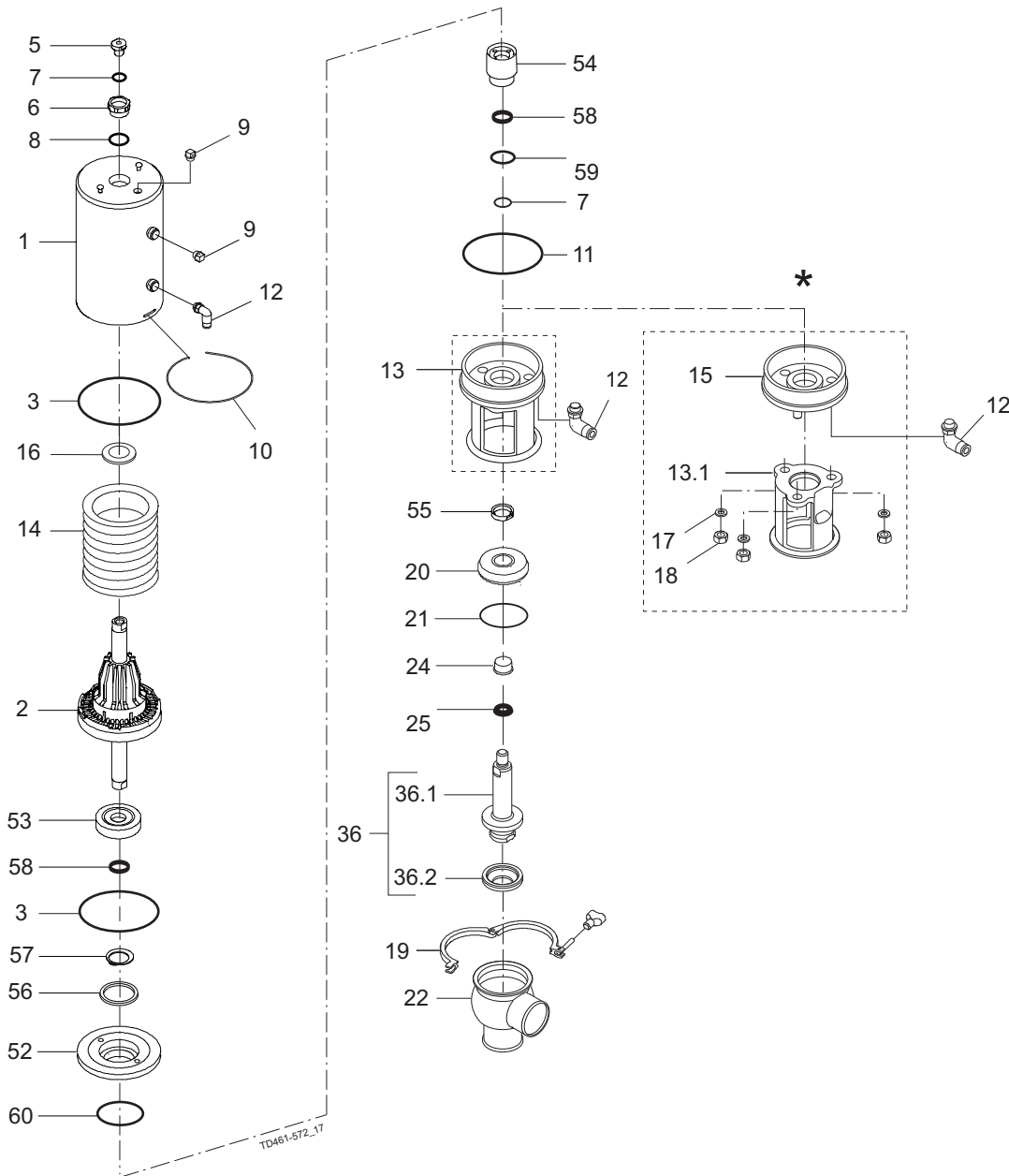


Do **NOT** attempt to cut the actuator open, due to spring under load danger!

AND



Do **NOT** attempt to cut the actuator open due to spring under load danger.



*) "Remove yoke with bolts" version, produced from 2006 to June 2016.
 Replaced by "yoke without bolts" (13)

Shut-off valve - TR2

Pos	Qty	Denomination	1½"	2"	2½"	3"	4"
		Actuator, complete blasted (NC) Shut Off	9613185910	9613185911	9613185912	9613185913	9613185914
		Actuator, complete polished (NC) Shut Off	9613185910	9613185911	9613185912	9613185913	9613185914
1	1	Cylinder, (blasted)	9613167709	9613167709	9613167709	9613167710	9613167711
	1	Cylinder, (polished)	9613167711	9613167711	9613167711	9613167712	9613167712
2	1	Piston	9613132304	9613132304	9613132304	9613132405	9613132405
3	• 2	O-ring					
5	1	Adapter, plastic (- 0115)					
	1	Adapter, steel (0115 - 0518)					
	1	Adapter, steel (0518 -)	9615374701	9615374701	9615374701	9615374701	9615374701
6	• 1	Bushing					
7	• 2	O-ring					
8	• 1	O-ring					
9	2	Plug	9613414101	9613414101	9613414101	9613414101	9613414101
10	1	Lock wire	9613143202	9613143202	9613143202	9613143203	9613143203
11	• 1	O-ring					
12	2	Air fitting	9611994682	9611994682	9611994482	9611994682	9611994682
13	1	Yoke	9615245401	9613154402	9613154502	9613154603	9613154703
14	1	Spring assembly	9613132502	9613132502	9613132502	9613132503	9613132503
16	• 1	Support disc					
52	1	Piston	9613167801	9613167801	9613167801	9613167901	9613167901
53	1	Thrust plate	9613168201	9613168201	9613168201	9613168201	9613168201
54	1	Guide	9613168001	9613168001	9613168001	9613168101	9613168101
55	1	Nut	9613168301	9613168301	9613168301	9613168301	9613168301
56	2	Spacer, (only for shut-off valve)	9613168402				
	3	Spacer, (only for shut-off valve)		9613168402	9613168402	9613168402	9613168402
	1	Spacer, (only for shut-off valve)		9613168401	9613168401		
	2	Spacer, (only for shut-off valve)				9613168401	9613168401
	1	Spacer, (only for NO change-over valve)				9613168401	9613168401
57	1	Lock ring	51997509	51997509	51997509	51997509	51997509
58	2	Guide ring	9613008424	9613008424	9613008424	9613008424	9613008424
59	• 1	O-ring					
60	• 1	O-ring					

Removeable yoke with bolts - OBSOLETE

use position 13

13.1	1	Yoke, (- 0616)					
15	1	Bottom (- 0616)					
17	3	Washer (- 0616)					
18	3	Nut (- 0616)					

Shut-off valve - TR2

If the actuator is marked with a danger warning do **NOT** attempt to cut the actuator open.



Do **NOT** attempt to disassemble the actuator due to spring under load danger!

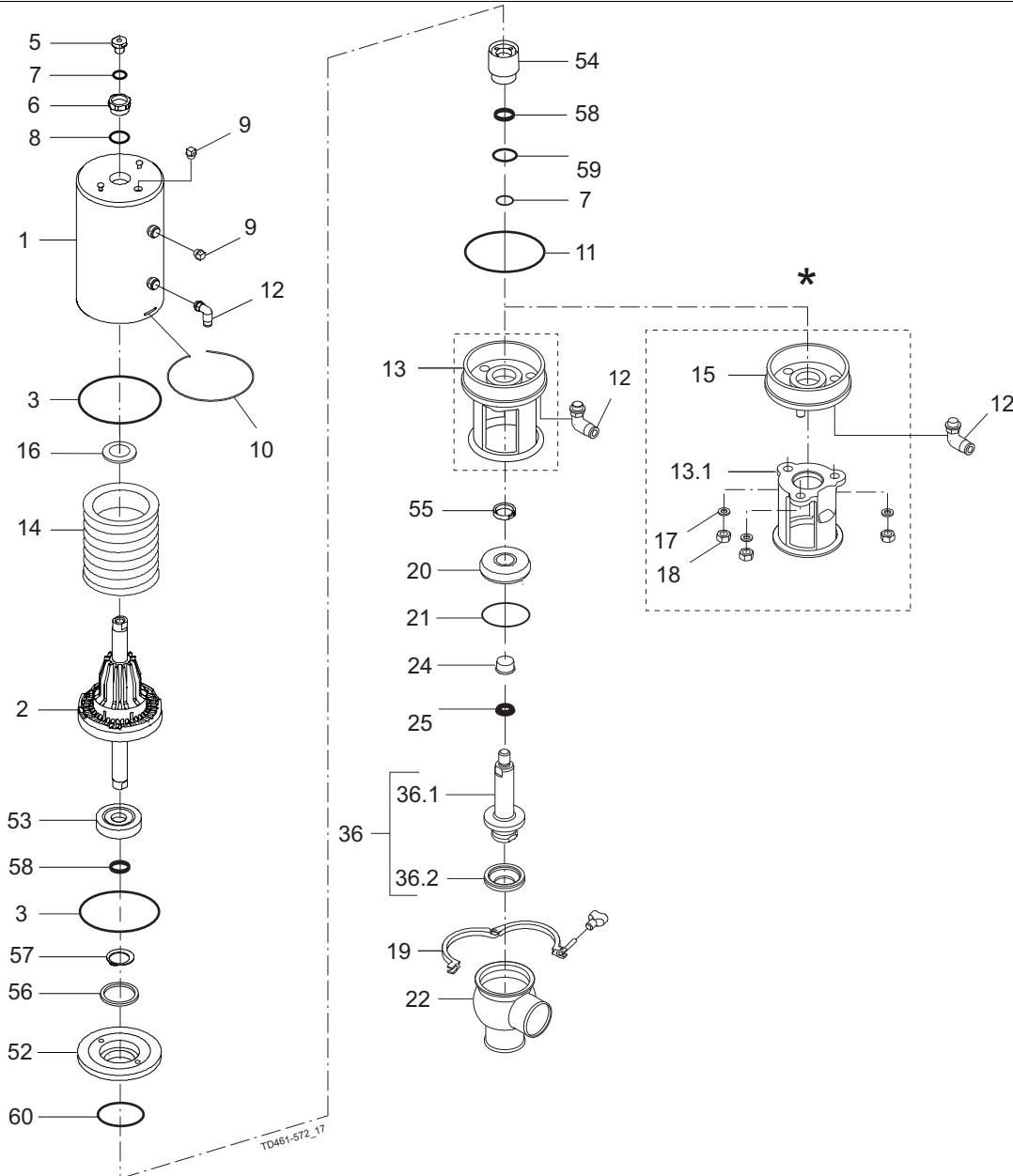


Do **NOT** attempt to cut the actuator open, due to spring under load danger!

AND



Do **NOT** attempt to cut the actuator open due to spring under load danger.



*) "Remove yoke with bolts" version, produced from 2006 to June 2016.
Replaced by "yoke without bolts" (13)

Shut-off valve - TR2

Pos	Qty	Denomination	1½"	2"	2½"	3"	4"
Clamp							
19	1	Clamp	9612939316	9612939317	9612939318	9612939319	9612939320
Bonnet							
20	1	Bonnet	9613127102	9613127103	9613127104	9613127105	9613127106
21	♦	1 O-ring, EPDM (standard)					
	1	O-ring, HNBR					
	1	O-ring, FPM					
		O-ring, , set (10 pcs.) EPDM	9614059422	9614059425	9614059428	9614059431	9614059434
		O-ring, , set (10 pcs.) HNBR	9614059423	9614059426	9614059429	9614059432	9614059435
		O-ring, , set (10 pcs.) FPM	9614059424	9614059427	9614059430	9614059433	9614059436
24	1	Bushing	9613125002	9613125002	9613125002	9613125002	9613125002
25	♦	1 Lip seal, , EPDM (standard)					
	1	Lip seal, , HNBR					
	1	Lip seal, , FPM					
	1	Lip seal, , set (10 pcs.) EPDM	9614059419	9614059419	9614059419	9614059419	9614059419
	1	Lip seal, , set (10 pcs.) HNBR	9614059420	9614059420	9614059420	9614059420	9614059420
	1	Lip seal, , set (10 pcs.) FPM	9614059421	9614059421	9614059421	9614059421	9614059421
Valve Body							
22	1	Valve body, , lower, 2 ports , clamp	9613161603	9613161605	9613161607	9613161609	9613161611
	1	Valve body, , lower, 3 ports, clamp	9613161604	9613161606	9613161608	9613161610	9613161612
	1	Valve body, , lower 2 ports , welding ends	9613139515	9613139517	9613139519	9613139521	9613139523
	1	Valve body, , lower 3 ports , welding ends	9613139516	9613139518	9613139520	9613139522	9613139524
Valve Plug							
36	1	Plug, shut off, complete	9613155802	9613155803	9613155804	9613155805	9613155806
36.1	1	Plug, shut off.	9613151101	9613151102	9613151103	9613151104	9613151105
36.2	♦	1 Plug seal, PTFE					
		Plug seal, , set (10 pcs.) PTFE	9614059449	9614059450	9614059451	9614059452	9614059453

Service kits for actuator

■	Service kit, actuator	9611926738	9611926738	9611926738	9611926739	9611926739
---	-----------------------------	------------	------------	------------	------------	------------

Servicekits for product wetted parts

♦	Servicekits, EPDM	9611926561	9611926562	9611926563	9611926564	9611926565
♦	Servicekits, HNBR	9611926566	9611926567	9611926568	9611926569	9611926570
♦	Servicekits, FPM	9611926571	9611926572	9611926573	9611926574	9611926575

Parts marked with ♦♦ are included in the service kits (actuator)

Recommended spare parts: Service kits

TD900468/3

Change-over valve - TR2

If the actuator is marked with a danger warning do **NOT** attempt to cut the actuator open.



Do **NOT** attempt to disassemble the actuator due to spring under load danger!

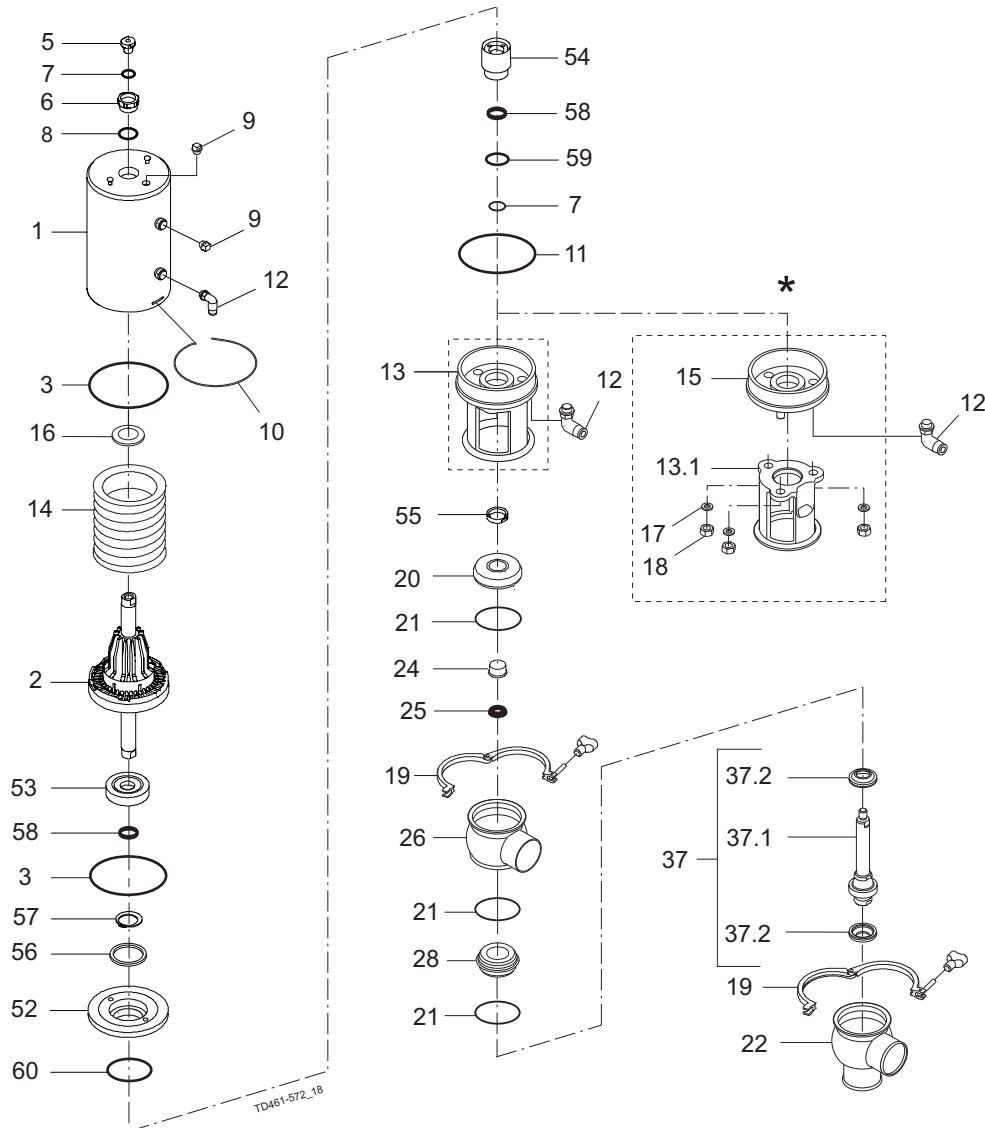


Do **NOT** attempt to cut the actuator open, due to spring under load danger!

AND



Do **NOT** attempt to cut the actuator open, due to spring under load danger.



*) "Remove yoke with bolts" version, produced from 2006 to June 2016.
Replaced by "yoke without bolts" (13)

Change-over valve - TR2

Pos	Qty	Denomination	1½"	2"	2½"	3"	4"
		Actuator , - complete blasted (NO) Change Over .	9613185934	9613185935	9613185936	9613185937	9613185938
		Actuator , - complete blasted (NC) Change Over .	9613185924	9613185925	9613185926	9613185927	9613185928
		Actuator , - complete polished (NO) Change Over	9613185934	9613185930	9613185931	9613185937	9613185933
		Actuator , - complete polished (NC) Change Over	9613185919	9613185920	9613185921	9613185922	9613185923
1	1	Cylinder , (blasted)	9613167709	9613167709	9613167709	9613167710	9613167711
	1	Cylinder , (polished)	9613167711	9613167711	9613167711	9613167712	9613167712
2	1	Piston	9613132304	9613132304	9613132304	9613132405	9613132405
3	2	O-ring	9611990033	9611990033	9611990033	9611994283	9611994283
5	1	Adapter, plastic (- 0115)					
	1	Adapter, steel (0115 - 0518)					
	1	Adapter, steel (0518 -)	9615374701	9615374701	9615374701	9615374701	9615374701
6	1	Bushing	9613132801	9613132801	9613132801	9613132801	9613132801
7	2	O-ring	9611994300	9611994300	9611994300	9611994300	9611994300
8	1	O-ring	9611994680	9611994680	9611994680	9611994680	9611994680
9	2	Plug	9613414101	9613414101	9613414101	9613414101	9613414101
10	1	Lock wire	9613143202	9613143202	9613143202	9613143203	9613143203
11	1	O-ring	22340622	22340622	22340622	9611992579	9611992579
12	2	Air fitting	9611994682	9611994682	9611994482	9611994682	9611994682
13	1	Yoke	9615245401	9613154402	9613154502	9613154603	9613154703
14	1	Spring assembly	9613132502	9613132502	9613132502	9613132503	9613132503
16	1	Support disc	9613142601	9613142601	9613142601	9613142601	9613142601
52	1	Piston	9613167801	9613167801	9613167801	9613167901	9613167901
53	1	Thrust plate	9613168201	9613168201	9613168201	9613168201	9613168201
54	1	Guide	9613168001	9613168001	9613168001	9613168101	9613168101
55	1	Nut	9613168301	9613168301	9613168301	9613168301	9613168301
56	2	Spacer , (only for shut-off valve)	9613168402				
	3	Spacer , (only for shut-off valve)		9613168402	9613168402	9613168402	9613168402
	1	Spacer , (only for shut-off valve)		9613168401	9613168401		
	2	Spacer , (only for shut-off valve)				9613168401	9613168401
	1	Spacer, (only for NO change-over valve)				9613168401	9613168401
57	1	Lock ring	51997509	51997509	51997509	51997509	51997509
58	2	Guide ring	9613008424	9613008424	9613008424	9613008424	9613008424
59	1	O-ring					
60	1	O-ring					

Removeable yoke with bolts - OBSOLETE

use position 13

13.1	1	Yoke (- 0616)					
15	1	Bottom , (- 0616)					
17	3	Washer , (- 0616)					
18	3	Nut , (- 0616)					

Change-over valve - TR2

If the actuator is marked with a danger warning do **NOT** attempt to cut the actuator open.



Do **NOT** attempt to disassemble the actuator due to spring under load danger!

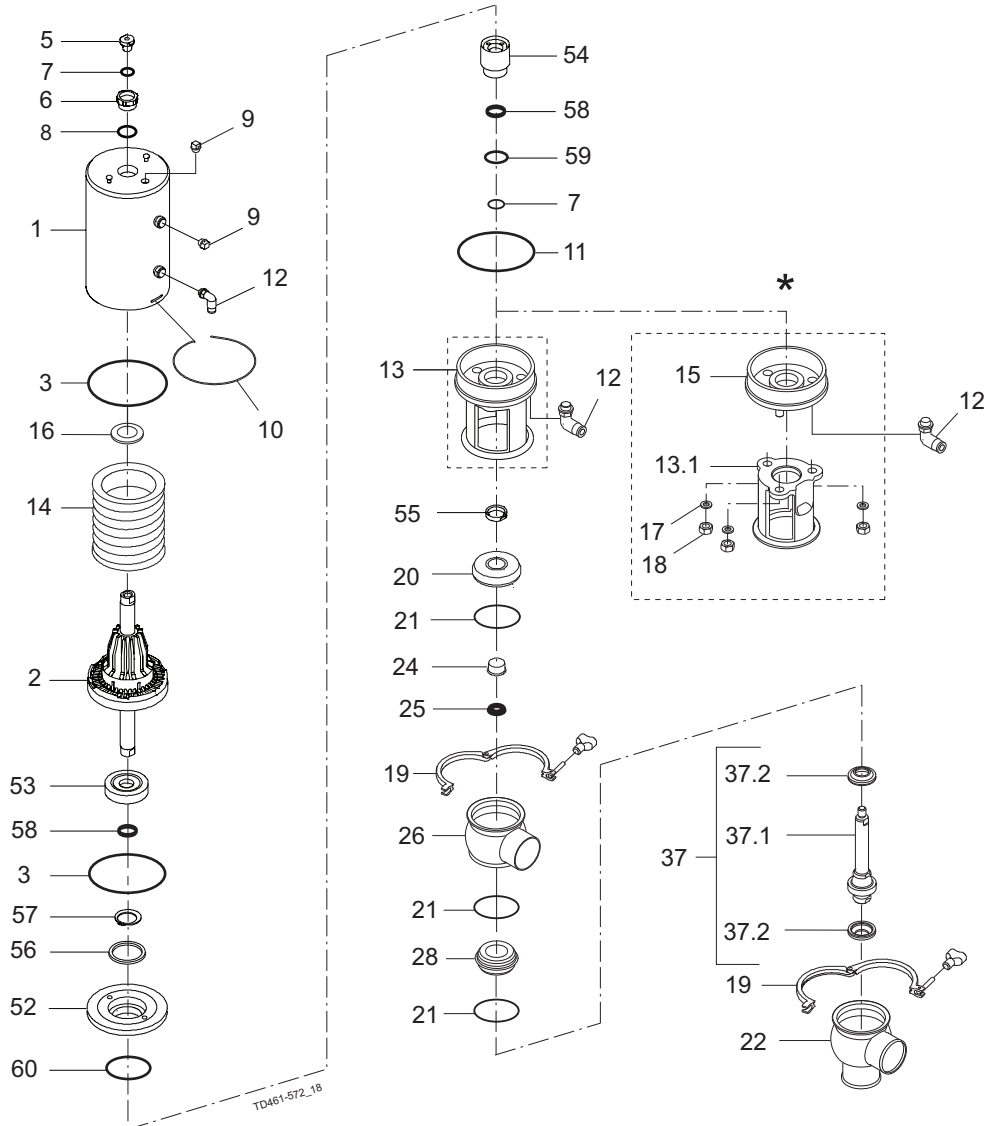


Do **NOT** attempt to cut the actuator open, due to spring under load danger!

AND



Do **NOT** attempt to cut the actuator open, due to spring under load danger.



*) "Remove yoke with bolts" version, produced from 2006 to June 2016.
Replaced by "yoke without bolts" (13)

Change-over valve - TR2

Pos	Qty	Denomination	1½"	2"	2½"	3"	4"
Clamp							
19	2	Clamp	9612939316	9612939317	9612939318	9612939319	9612939320
Bonnet							
20	1	Bonnet	9613127102	9613127103	9613127104	9613127105	9613127106
21	♦ 3	O-ring, EPDM (standard)					
	3	O-ring, , HNBR					
	3	O-ring, , FPM					
		O-ring, , set (10 pcs.) EPDM	9614059422	9614059425	9614059428	9614059431	9614059434
		O-ring, , set (10 pcs.) HNBR	9614059423	9614059426	9614059429	9614059432	9614059435
		O-ring, , set (10 pcs.) FPM	9614059424	9614059427	9614059430	9614059433	9614059436
24	1	Bushing	9613125002	9613125002	9613125002	9613125002	9613125002
25	♦ 1	Lip seal, , EPDM (standard)					
	1	Lip seal, , HNBR					
	1	Lip seal, , FPM					
		Lip seal, , set (10 pcs.) EPDM	9614059419	9614059419	9614059419	9614059419	9614059419
		Lip seal, , set (10 pcs.) HNBR	9614059420	9614059420	9614059420	9614059420	9614059420
		Lip seal, , set (10 pcs.) FPM	9614059421	9614059421	9614059421	9614059421	9614059421
Seat							
28	1	Seat	9613127502	9613127503	9613127504	9613127505	9613127506
Valve Body							
26	1	Valve body, , upper, 1 ports, clamp	9613161503	9613161505	9613161507	9613161509	9613161511
	1	Valve body, , upper, 2 ports, clamp	9613161504	9613161506	9613161508	9613161510	9613161512
	1	Valve body, , upper, 1 ports, welding ends	9613139315	9613139317	9613139319	9613139321	9613139323
	1	Valve body, , upper, 2 ports, welding ends	9613139316	9613139318	9613139320	9613139322	9613139324
22	1	Valve body, , lower, 2 ports, clamp	9613161603	9613161605	9613161607	9613161609	9613161611
	1	Valve body, , lower, 3 ports, clamp	9613161604	9613161606	9613161608	9613161610	9613161612
	1	Valve body, , lower, 2 ports, welding ends	9613139515	9613139517	9613139519	9613139521	9613139523
	1	Valve body, , lower, 3 ports, welding ends	9613139516	9613139518	9613139520	9613139522	9613139524
Valve Plug							
37	1	Plug, change over, complete	9613155502	9613155503	9613155503	9613155505	9613155506
37.1	1	Plug, change over	9613155401	9613155402	9613155403	9613155404	9613155405
37.2	♦ 2	Plug seal, PTFE					
		Plug, seal, set (10 pcs.) PTFE	9614059449	9614059450	9614059451	9614059452	9614059453
			1½"	2"	2½"	3"	4"

Recommended spare parts: Service kits.

■	Servicekits, Actuator	9611926738	9611926738	9611926738	9611926739	9611926739
♦	Servicekits, EPDM	9611926633	9611926634	9611926635	9611926636	9611926637
♦	Servicekits, HNBR	9611926638	9611926639	9611926640	9611926641	9611926642
♦	Servicekits, FPM	9611926643	9611926644	9611926645	9611926646	9611926647

Parts marked with ♦ are included in the service kits (actuator)

Recommended spare parts: Service kits

TD900468/3

Shut-off valve - elastomer plug seal

If the actuator is marked with a danger warning do **NOT** attempt to cut the actuator open.



Do **NOT** attempt to disassemble the actuator due to spring under load danger!

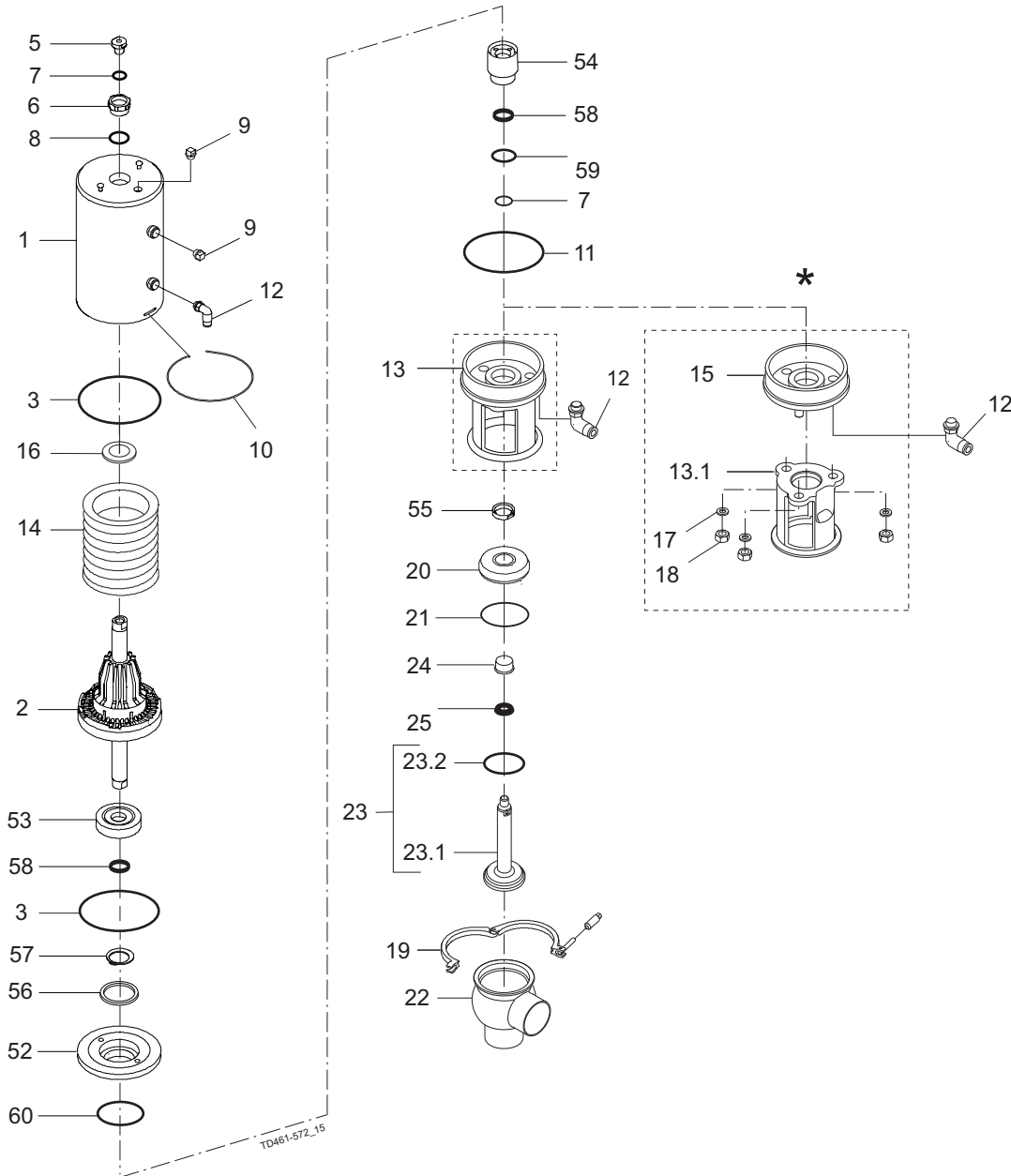


Do **NOT** attempt to cut the actuator open, due to spring under load danger!

AND



Do **NOT** attempt to cut the actuator open due to spring under load danger.



*) "Remove yoke with bolts" version, produced from 2006 to June 2016.
 Replaced by "yoke without bolts" (13)

Shut-off valve - elastomer plug seal

Pos	Qty	Denomination	1½"	2"	2½"	3"	4"
		Actuator , - complete blasted (NC) Shut Off . .	9613185910	9613185911	9613185912	9613185913	9613185914
		Actuator , - complete polished (NC) Shut Off	9613185910	9613185911	9613185912	9613185913	9613185914
1	1	Cylinder , (blasted)	9613167709	9613167709	9613167709	9613167710	9613167711
2	1	Cylinder , (polished)	9613167711	9613167711	9613167711	9613167712	9613167712
3	1	Piston	9613132304	9613132304	9613132304	9613132405	9613132405
5	2	O-ring					
	1	Adapter, plastic (- 0115)					
	1	Adapter, steel (0115 - 0518)					
	1	Adapter, steel (0518 -)	9615374701	9615374701	9615374701	9615374701	9615374701
6	1	Bushing					
7	2	O-ring					
8	1	O-ring					
9	2	Plug	9613414101	9613414101	9613414101	9613414101	9613414101
10	1	Lock wire	9613143202	9613143202	9613143202	9613143203	9613143203
11	1	O-ring					
12	2	Air fitting	9611994682	9611994682	9611994482	9611994682	9611994682
13	1	Yoke	9615245401	9613154402	9613154502	9613154603	9613154703
14	1	Spring assembly	9613132502	9613132502	9613132502	9613132503	9613132503
16	1	Support disc					
52	1	Piston	9613167801	9613167801	9613167801	9613167901	9613167901
53	1	Thrust plate	9613168201	9613168201	9613168201	9613168201	9613168201
54	1	Guide	9613168001	9613168001	9613168001	9613168101	9613168101
55	1	Nut	9613168301	9613168301	9613168301	9613168301	9613168301
56	2	Spacer, (only for shut-off valve)	9613168402				
57	1	Lock ring	51997509	51997509	51997509	51997509	51997509
58	2	Guide ring	9613008424	9613008424	9613008424	9613008424	9613008424
59	1	O-ring					
60	1	O-ring					

Removeable yoke with bolts - OBSOLETE

use position 13

13.1	1	Yoke , (- 0616)					
15	1	Bottom , (- 0616)					
17	3	Washer , (- 0616)					
18	3	Nut , (- 0616)					

Shut-off valve - elastomer plug seal

If the actuator is marked with a danger warning do **NOT** attempt to cut the actuator open.



Do **NOT** attempt to disassemble the actuator due to spring under load danger!

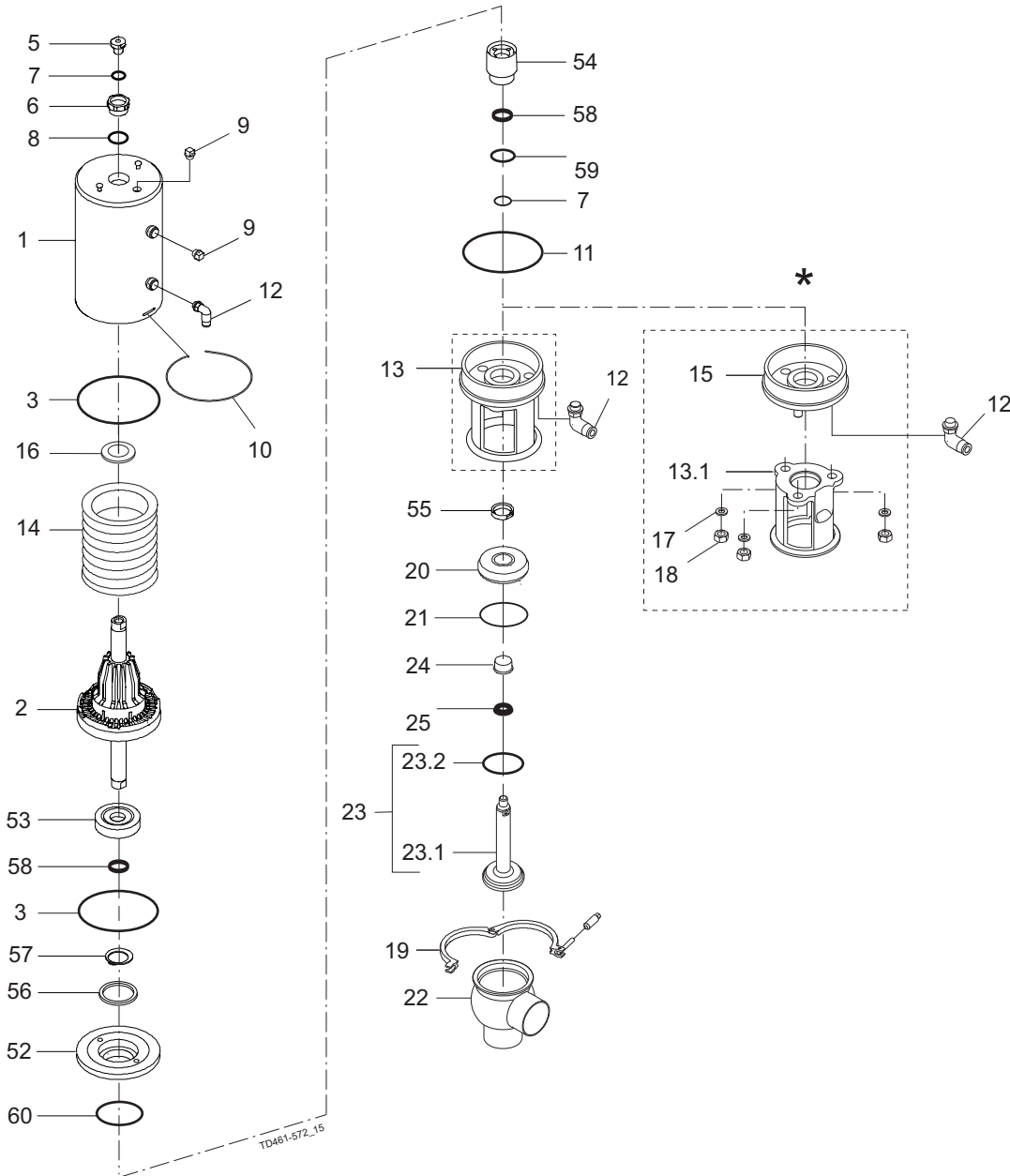


Do **NOT** attempt to cut the actuator open, due to spring under load danger!

AND



Do **NOT** attempt to cut the actuator open due to spring under load danger.



*) "Remove yoke with bolts" version, produced from 2006 to June 2016.
 Replaced by "yoke without bolts" (13)

Shut-off valve - elastomer plug seal

Pos	Qty	Denomination	1½"	2"	2½"	3"	4"
Clamp							
19	1	Clamp	9612939316	9612939317	9612939318	9612939319	9612939320
Bonnet							
20	1	Bonnet	9613127102	9613127103	9613127104	9613127105	9613127106
21	♦	1 O-ring, EPDM (standard)					
	1	O-ring, HNBR					
	1	O-ring, FPM					
		O-ring, , set (10 pcs.) EPDM	9614059422	9614059425	9614059428	9614059431	9614059434
		O-ring, , set (10 pcs.) HNBR	9614059423	9614059426	9614059429	9614059432	9614059435
		O-ring, , set (10 pcs.) FPM	9614059424	9614059427	9614059430	9614059433	9614059436
24	1	Bushing	9613125002	9613125002	9613125002	9613125002	9613125002
25	♦	1 Lip seal, , EPDM (standard)					
	1	Lip seal, , HNBR					
	1	Lip seal, , FPM					
		Lip seal, , set (10 pcs.) EPDM	9614059419	9614059419	9614059419	9614059419	9614059419
		Lip seal, , set (10 pcs.) HNBR	9614059420	9614059420	9614059420	9614059420	9614059420
		Lip seal, , set (10 pcs.) FPM	9614059421	9614059421	9614059421	9614059421	9614059421
Valve Body							
22	1	Valve body, , lower, 2 ports, clamp	9613161603	9613161605	9613161607	9613161609	9613161611
	1	Valve body, , lower, 3 ports, clamp	9613161604	9613161606	9613161608	9613161610	9613161612
	1	Valve body, , lower 2 ports, welding ends	9613139515	9613139517	9613139519	9613139521	9613139523
	1	Valve body, , lower 3 ports, welding ends	9613139516	9613139518	9613139520	9613139522	9613139524
Valve Plug							
23	1	Plug, , shut off, ISO, complete, EPDM (standard)	9613138802	9613138803	9613138804	9613138805	9613138806
	1	Plug, , shut off, ISO, complete, HNBR	9613138814	9613138815	9613138816	9613138817	9613138818
	1	Plug, , shut off, ISO, complete, FPM	9613138826	9613138827	9613138828	9613138829	9613138830
	1	Plug, , shut off, DIN, complete, EPDM (standard)	9613138808	9613138809	9613138810	9613138811	9613138812
	1	Plug, , shut off, DIN, complete, HNBR	9613138820	9613138821	9613138822	9613138823	9613138824
	1	Plug, , shut off, DIN, complete, FPM	9613138832	9613138833	9613138834	9613138835	9613138836
23.1	1	Plug, , shut off, ISO	9613139802	9613139803	9613139804	9613139805	9613139806
	1	Plug, , shut off, DIN	9613139808	9613139809	9613139810	9613139811	9613139812
23.2♦	1	Plug seal, EPDM, (standard)					
	1	Plug seal, , HNBR					
	1	Plug seal, , FPM					
		Plug seal, , set (10 pcs.) EPDM	9614059404	9614059407	9614059410	9614059413	9614059416
		Plug seal, , set (10 pcs.) HNBR	9614059405	9614059408	9614059411	9614059414	9614059417
		Plug seal, , set (10 pcs.) FPM	9614059406	9614059409	9614059412	9614059415	9614059418

1½" 2" 2½" 3" 4"

Recommended spare parts: Service kits.

■	Service kit, Actuator	9611926738	9611926738	9611926738	9611926739	9611926739
♦	Service kit, EPDM	9611926502	9611926503	9611926504	9611926505	9611926506
♦	Service kit, HNBR	9611926508	9611926509	9611926510	9611926511	9611926512
♦	Service kit, FPM	9611926514	9611926515	9611926516	9611926517	9611926518

Parts marked with ♦■ are included in the service kits (actuator)

Recommended spare parts: Service kits

TD900468/3

Change-over valve - elastomer plug seal

If the actuator is marked with a danger warning do **NOT** attempt to cut the actuator open.



Do **NOT** attempt to disassemble the actuator due to spring under load danger!

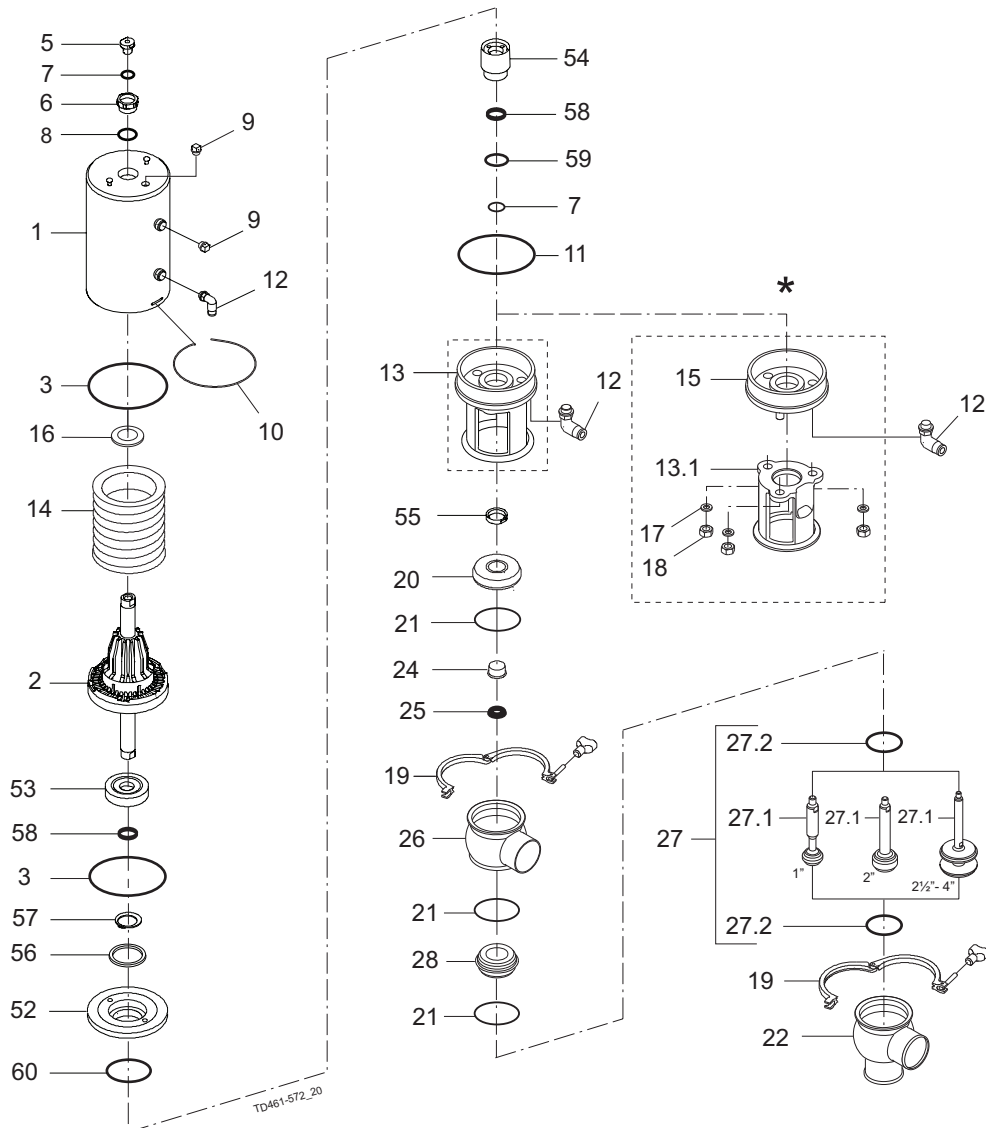


Do **NOT** attempt to cut the actuator open, due to spring under load danger!

AND



Do **NOT** attempt to cut the actuator open due to spring under load danger.



*) "Remove yoke with bolts" version, produced from 2006 to June 2016.
Replaced by "yoke without bolts" (13)

Change-over valve - elastomer plug seal

Pos	Qty	Denomination	1½"	2"	2½"	3"	4"
		Actuator, - complete blasted (NO) Change Over	9613185934	9613185935	9613185936	9613185937	9613185938
		Actuator, - complete blasted (NC) Change Over	9613185924	9613185925	9613185926	9613185927	9613185928
		Actuator, - complete polished (NO) Change Over	9613185934	9613185930	9613185931	9613185937	9613185933
		Actuator, - complete polished (NC) Change Over	9613185919	9613185920	9613185921	9613185922	9613185923
1	1	Cylinder, (blasted)	9613167709	9613167709	9613167709	9613167710	9613167711
	1	Cylinder, (polished)	9613167711	9613167711	9613167711	9613167712	9613167712
2	1	Piston	9613132304	9613132304	9613132304	9613132405	9613132405
3	2	O-ring					
5	1	Adapter, plastic (- 0115)					
	1	Adapter, steel (0115 - 0518)					
	1	Adapter, steel (0518 -)	9615374701	9615374701	9615374701	9615374701	9615374701
6	1	Bushing					
7	2	O-ring					
8	1	O-ring					
9	2	Plug	9613414101	9613414101	9613414101	9613414101	9613414101
10	1	Lock wire	9613143202	9613143202	9613143202	9613143203	9613143203
11	1	O-ring					
12	2	Air fitting	9611994682	9611994682	9611994482	9611994682	9611994682
13	1	Yoke	9615245401	9613154402	9613154502	9613154603	9613154703
14	1	Spring assembly	9613132502	9613132502	9613132502	9613132503	9613132503
16	1	Support disc					
52	1	Piston	9613167801	9613167801	9613167801	9613167901	9613167901
53	1	Thrust plate	9613168201	9613168201	9613168201	9613168201	9613168201
54	1	Guide	9613168001	9613168001	9613168001	9613168101	9613168101
55	1	Nut	9613168301	9613168301	9613168301	9613168301	9613168301
56	2	Spacer, (only for shut-off valve)	9613168402				
57	1	Lock ring	51997509	51997509	51997509	51997509	51997509
58	2	Guide ring	9613008424	9613008424	9613008424	9613008424	9613008424
59	1	O-ring					
60	1	O-ring					

Removeable yoke with bolts - OBSOLETE

use position 13

13.1	1	Yoke, (- 0616)					
15	1	Bottom, (- 0616)					
17	3	Washer, (- 0616)					
18	3	Nut, (- 0616)					

Change-over valve - elastomer plug seal

If the actuator is marked with a danger warning do **NOT** attempt to cut the actuator open.



Do **NOT** attempt to disassemble the actuator due to spring under load danger!

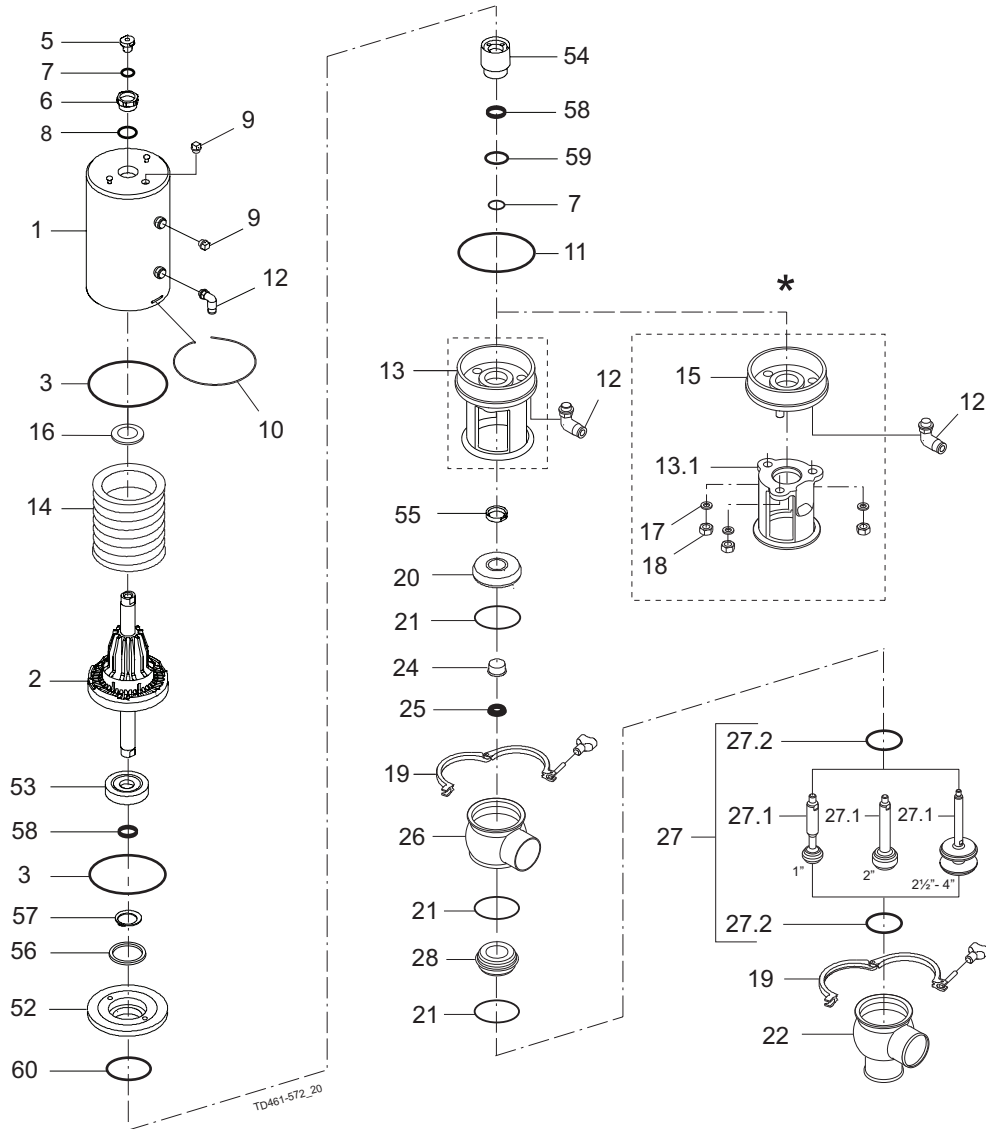


Do **NOT** attempt to cut the actuator open, due to spring under load danger!

AND



Do **NOT** attempt to cut the actuator open due to spring under load danger.



*) "Remove yoke with bolts" version, produced from 2006 to June 2016.
Replaced by "yoke without bolts" (13)

Change-over valve - elastomer plug seal

Pos	Qty	Denomination	1½"	2"	2½"	3"	4"
Clamp							
19	1	Clamp	9612939316	9612939317	9612939318	9612939319	9612939320
Bonnet							
20	1	Bonnet	9613127102	9613127103	9613127104	9613127105	9613127106
21	3	O-ring, , EPDM (standard)					
	3	O-ring, , HNBR					
	3	O-ring, , FPM					
		O-ring, , set (10 pcs.) EPDM	9614059422	9614059425	9614059428	9614059431	9614059434
		O-ring, , set (10 pcs.) HNBR	9614059423	9614059426	9614059429	9614059432	9614059435
		O-ring, , set (10 pcs.) FPM	9614059424	9614059427	9614059430	9614059433	9614059436
24	1	Bushing	9613125002	9613125002	9613125002	9613125002	9613125002
25	1	Lip seal, , EPDM (standard)					
	1	Lip seal, , HNBR					
	1	Lip seal, , FPM					
		Lip seal, , set (10 pcs.) EPDM	9614059419	9614059419	9614059419	9614059419	9614059419
		Lip seal, , set (10 pcs.) HNBR	9614059420	9614059420	9614059420	9614059420	9614059420
		Lip seal, , set (10 pcs.) FPM	9614059421	9614059421	9614059421	9614059421	9614059421
Seat							
28	1	Seat	9613127502	9613127503	9613127504	9613127505	9613127506
Valve Body							
26	1	Valve body, , upper, 1 ports , clamp	9613161503	9613161505	9613161507	9613161509	9613161511
	1	Valve body, , upper, 2 ports , clamp	9613161504	9613161506	9613161508	9613161510	9613161512
	1	Valve body, , upper, 1 ports, welding ends ...	9613139315	9613139317	9613139319	9613139321	9613139323
	1	Valve body, , upper, 2 ports, welding ends ...	9613139316	9613139318	9613139320	9613139322	9613139324
22	1	Valve body, , lower, 2 ports , clamp	9613161603	9613161605	9613161607	9613161609	9613161611
	1	Valve body, , lower, 3 ports, clamp	9613161604	9613161606	9613161608	9613161610	9613161612
	1	Valve body, , lower, 2 ports , welding ends ...	9613139515	9613139517	9613139519	9613139521	9613139523
	1	Valve body, , lower, 3 ports ,welding ends	9613139516	9613139518	9613139520	9613139522	9613139524
Valve Plug							
27	1	Plug, , change over, ISO complete, EPDM (standard)	9613127702	9613127703	9613127704	9613127705	9613127706
	1	Plug, , change over, ISO complete, HNBR ...	9613127714	9613127715	9613127716	9613127717	9613127718
	1	Plug, , change over, ISO complete, FPM	9613127726	9613127727	9613127728	9613127729	9613127730
	1	Plug, , change over, DIN complete, EPDM (standard)	9613127708	9613127709	9613127710	9613127711	9613127712
	1	Plug, , change over, DIN complete, HNBR ...	9613127720	9613127721	9613127722	9613127723	9613127724
	1	Plug, , change over, DIN complete, FPM	9613127732	9613127733	9613127734	9613127735	9613127736
27.1	1	Plug, , change over, ISO	9613140002	9613140003	9613140004	9613140005	9613140006
	1	Plug, , change over, DIN	9613140008	9613140009	9613140010	9613140011	9613140012
27.2	2	Plug, seal, EPDM (standard)					
	2	Plug, seal, HNBR					
	2	Plug, seal, FPM					
		Plug, seal, set (10 pcs.) EPDM	9614059404	9614059407	9614059410	9614059413	9614059416
		Plug, seal, set (10 pcs.) HNBR	9614059405	9614059408	9614059411	9614059414	9614059417
		Plug, seal, set (10 pcs.) FPM	9614059406	9614059409	9614059412	9614059415	9614059418
			1½"	2"	2½"	3"	4"

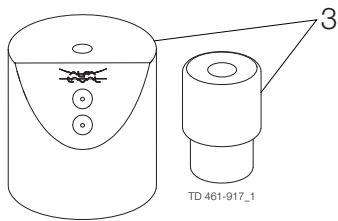
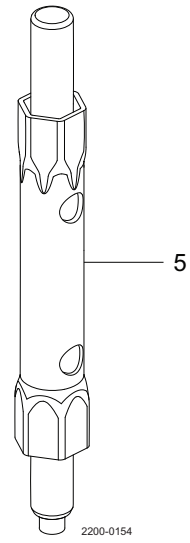
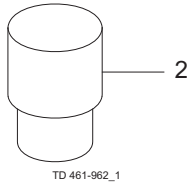
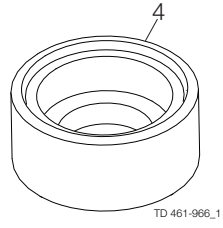
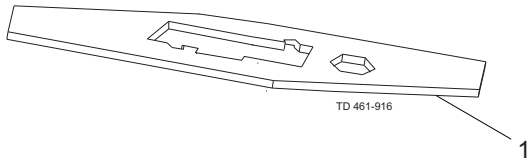
Recommended spare parts: Service kits.

■	Service kit, Actuator	9611926738	9611926738	9611926738	9611926739	9611926739
◆	Service kit, EPDM	9611926580	9611926581	9611926582	9611926583	9611926584
◆	Service kit, HNBR	9611926586	9611926587	9611926588	9611926589	9611926590
◆	Service kit, FPM	9611926592	9611926593	9611926594	9611926595	9611926596

Parts marked with ◆■ are included in the service kits (actuator)

Recommended spare parts: Service kits

TD900468/3



Mounting tools

Pos	Qty	Denomination	1½"	2"	2½"	3"	4"
1	1	Service tool only for Maintainable actuator	3135302191	3135302191	3135302191	9612454001	9612454001
2	1	Mandrel for bushing , (pos. 24)	9613160901	9613160901	9613160901	9613160901	9613160901
3	1	Mounting tool for elastomer plug seals	9613172901	9613172902	9613172902	9613172903	9613172903
4	1	Mounting tool , for	9613163201	9613163202	9613163203	9613163204	9613163205
5	1	Tool for actuator bushing , (pos. 6)	9614198401	9614198401	9614198401	9614198401	9614198401

TD 900515/2

How to contact Alfa Laval

Contact details for all countries are continually updated on our website.

Please visit www.alfalaval.com to access the information directly.

© Alfa Laval Corporate AB

This document and its contents is owned by Alfa Laval Corporate AB and protected by laws governing intellectual property and thereto related rights. It is the responsibility of the user of this document to comply with all applicable intellectual property laws. Without limiting any rights related to this document, no part of this document may be copied, reproduced or transmitted in any form or by any means (electronic, mechanical, photocopying, recording, or otherwise), or for any purpose, without the expressed permission of Alfa Laval Corporate AB. Alfa Laval Corporate AB will enforce its rights related to this document to the fullest extent of the law, including the seeking of criminal prosecution.