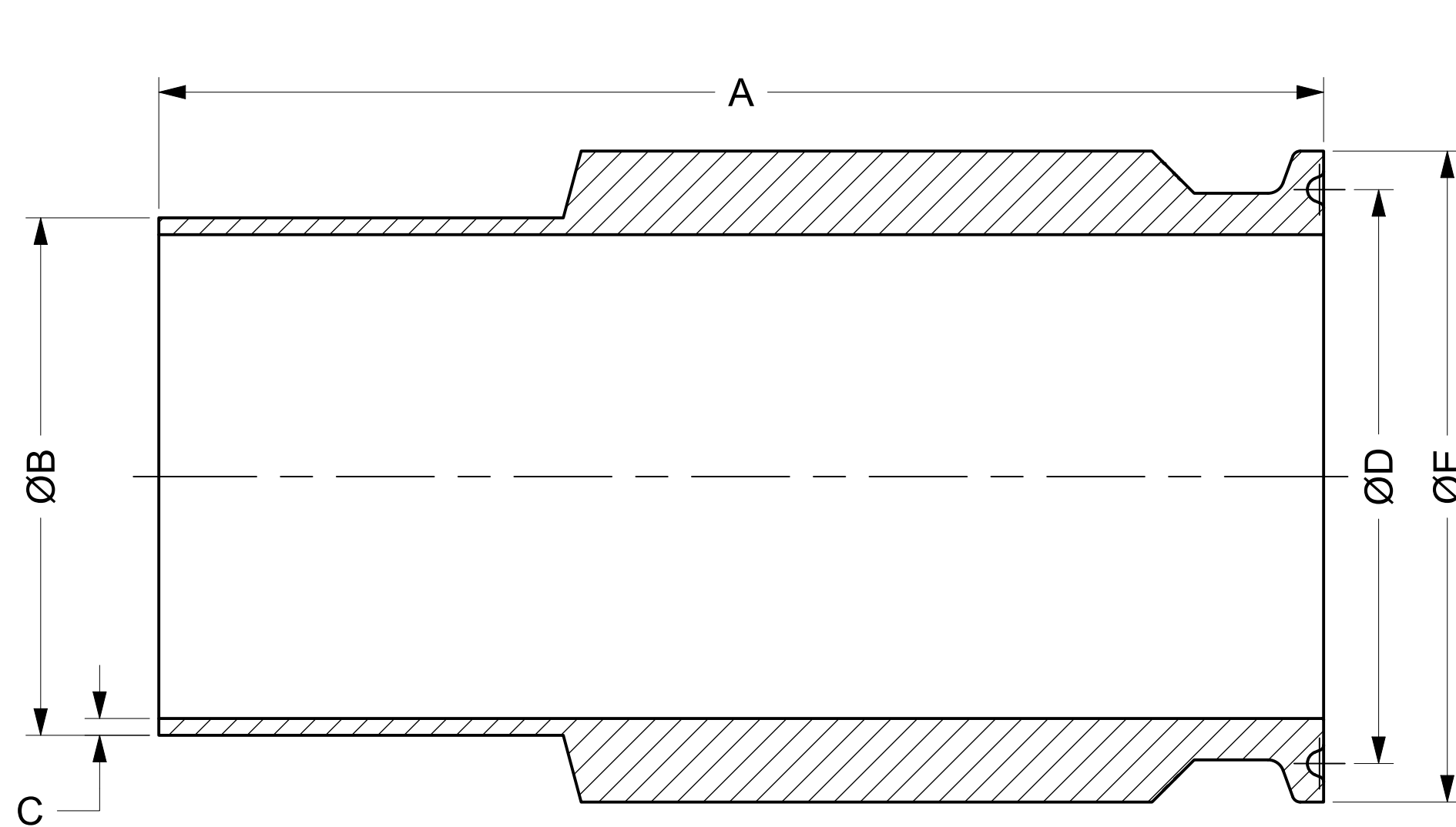
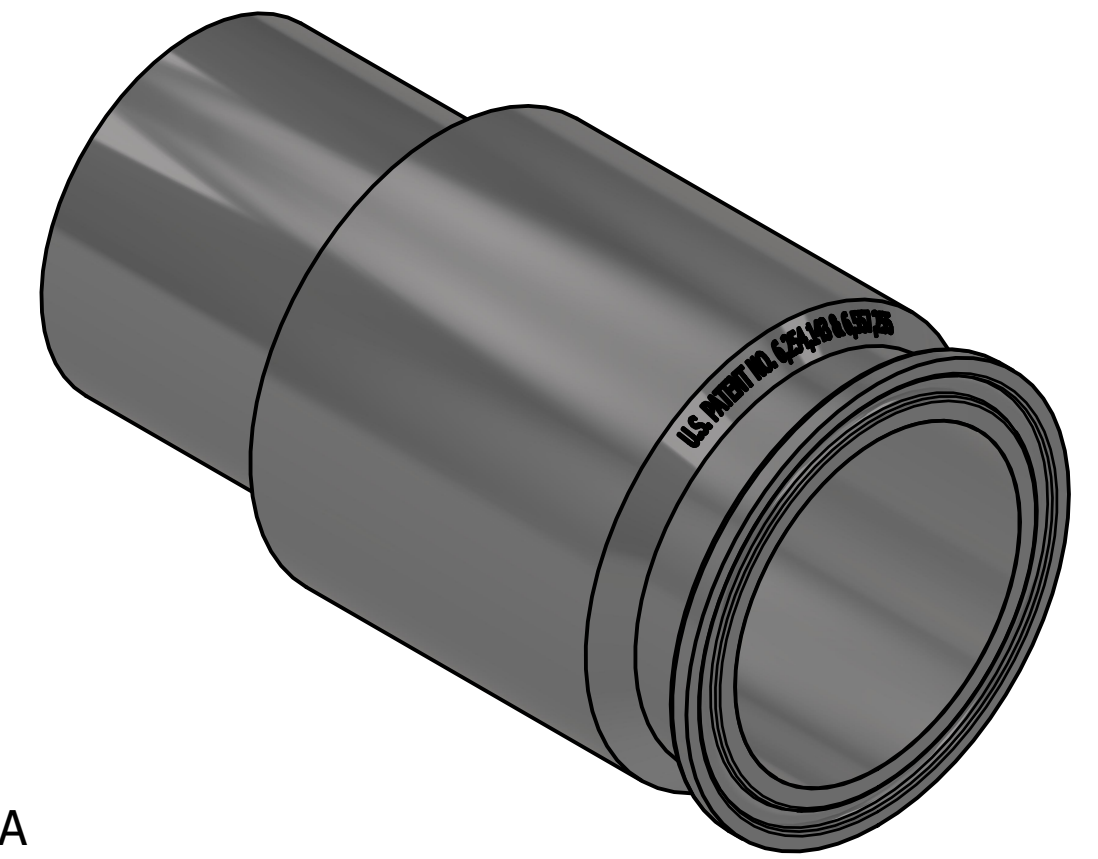
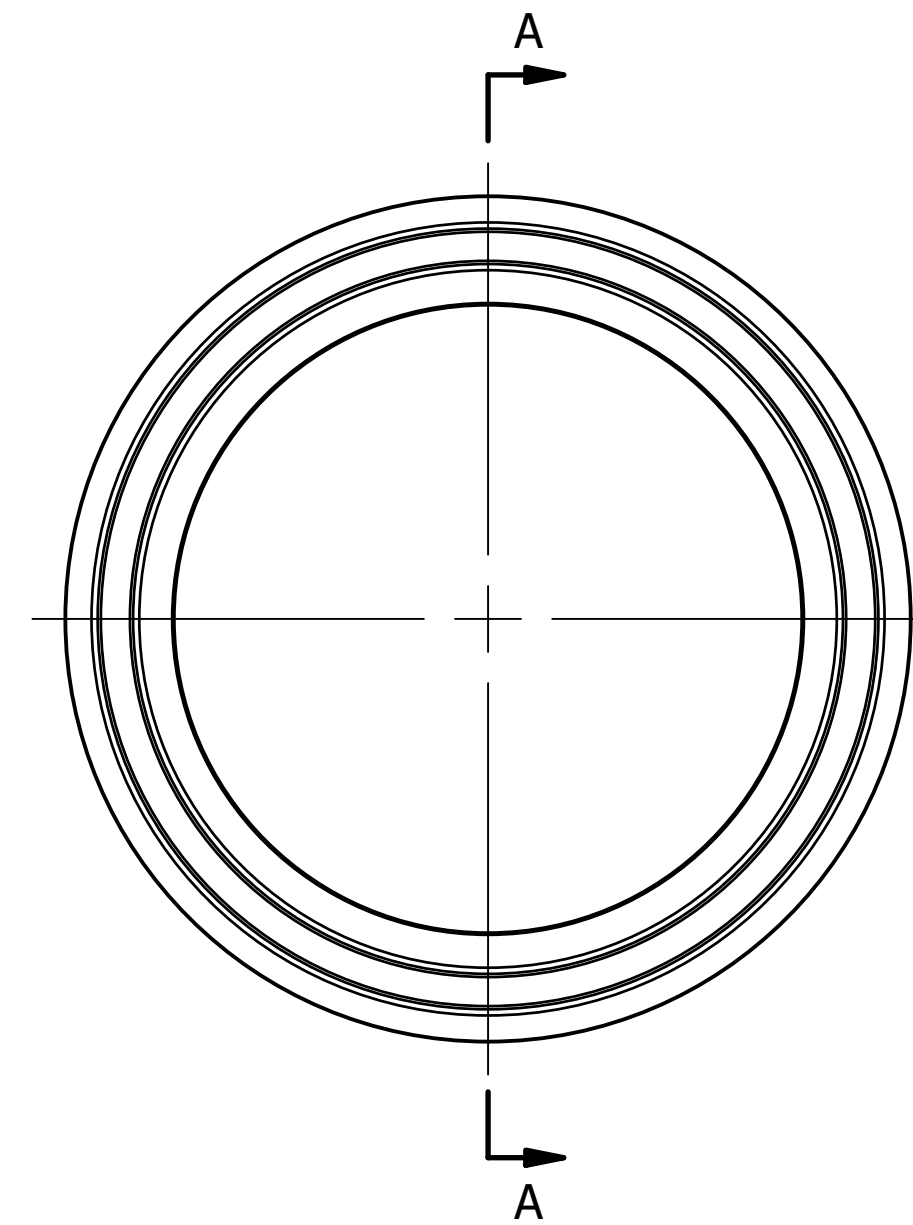


COMMON FINISHES		
DESIGNATION	PROCESS CONTACT	NON-PROCESS CONTACT
-1	MILL	MILL
-7	32 RA	32 RA
-PL	20 RA	32 RA
-PO	20 RA EP	32 RA
-PM	15 RA EP	32 RA



SECTION A-A



U.S. PATENT NO. 6,254,143 & 6,557,255

PART SIZE		OAL (A)		SIZE OD(B)		WALL THICKNESS (C)		GASKET DIAMETER (D)		FACE OD (E)	
IN	MM	IN	MM	IN	MM	IN	MM	IN	MM	IN	MM
0.5	12.70	4.50	114.30	0.500	12.70	0.065	1.65	0.796	20.22	0.984	24.99
0.75	19.05	4.50	114.30	0.750	19.05	0.065	1.65	0.796	20.22	0.984	24.99
1	25.40	4.50	114.30	1.000	25.40	0.065	1.65	1.781	45.24	1.984	50.39
1.5	38.10	4.50	114.30	1.500	38.10	0.065	1.65	1.781	45.24	1.984	50.39
2	50.80	4.50	114.30	2.000	50.80	0.065	1.65	2.218	56.34	2.516	63.91
2.5	63.50	4.50	114.30	2.500	63.50	0.065	1.65	2.781	70.64	3.047	77.39
3	76.20	4.50	114.30	3.000	76.20	0.065	1.65	3.281	83.34	3.579	90.91
4	101.60	4.50	114.30	4.000	101.60	0.083	2.11	4.344	110.34	4.682	118.92

* INFORMATION PROVIDED IN THIS DRAWING IS FOR REFERENCE ONLY. FINISH AVAILABILITY DEPENDANT ON MATERIAL



PART NO.:

FVSPC-MP

DESCRIPTION:

COLLARED SPOOL, TC

MATERIAL OPTIONS:

304/304L SS

316/316L SS

AL-6XN® - N08367

HASTELLOY® C-22® - N06022

DWG NO.:

CDFVSPC-MP

CREATION DATE:

15SEP2025

SHEET:

1 OF 1

REV.:

-