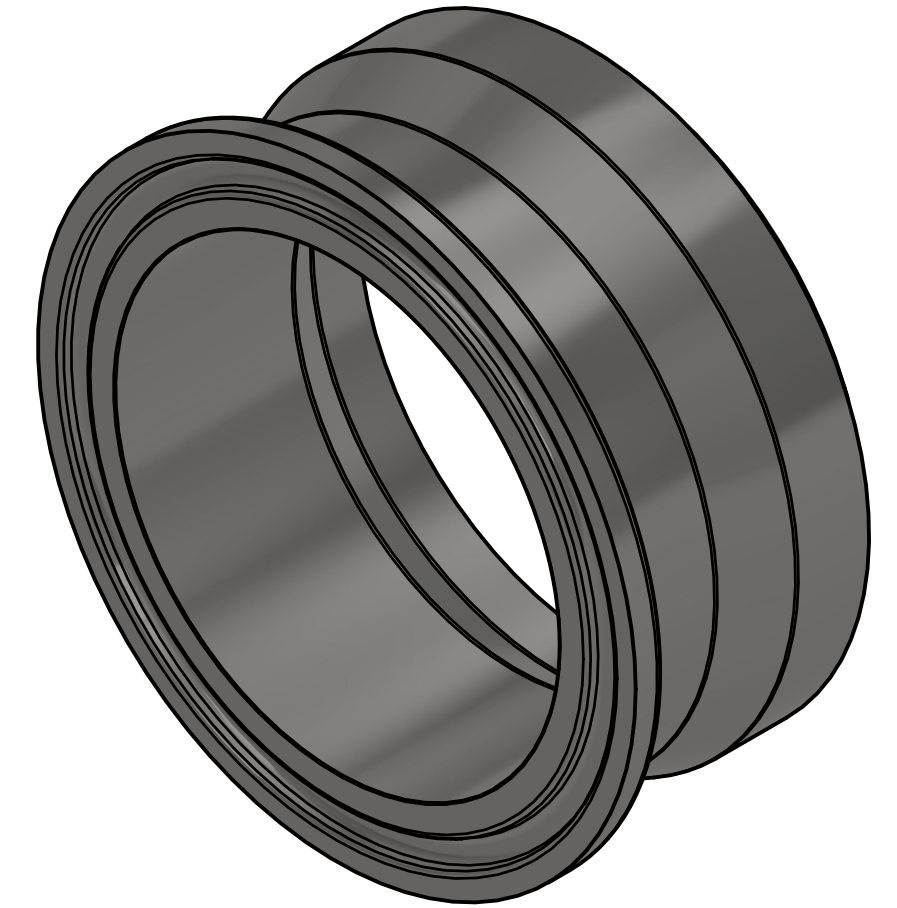
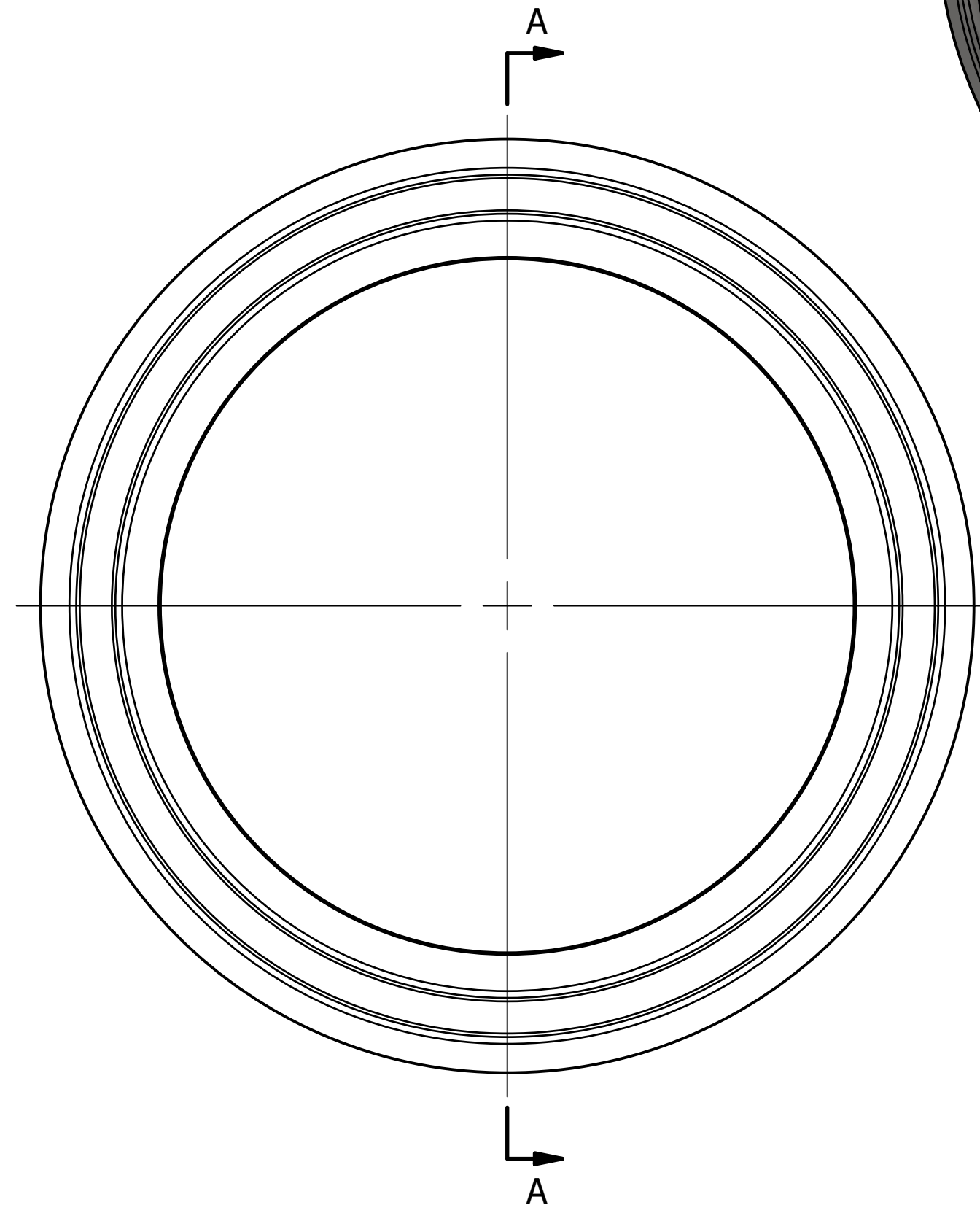
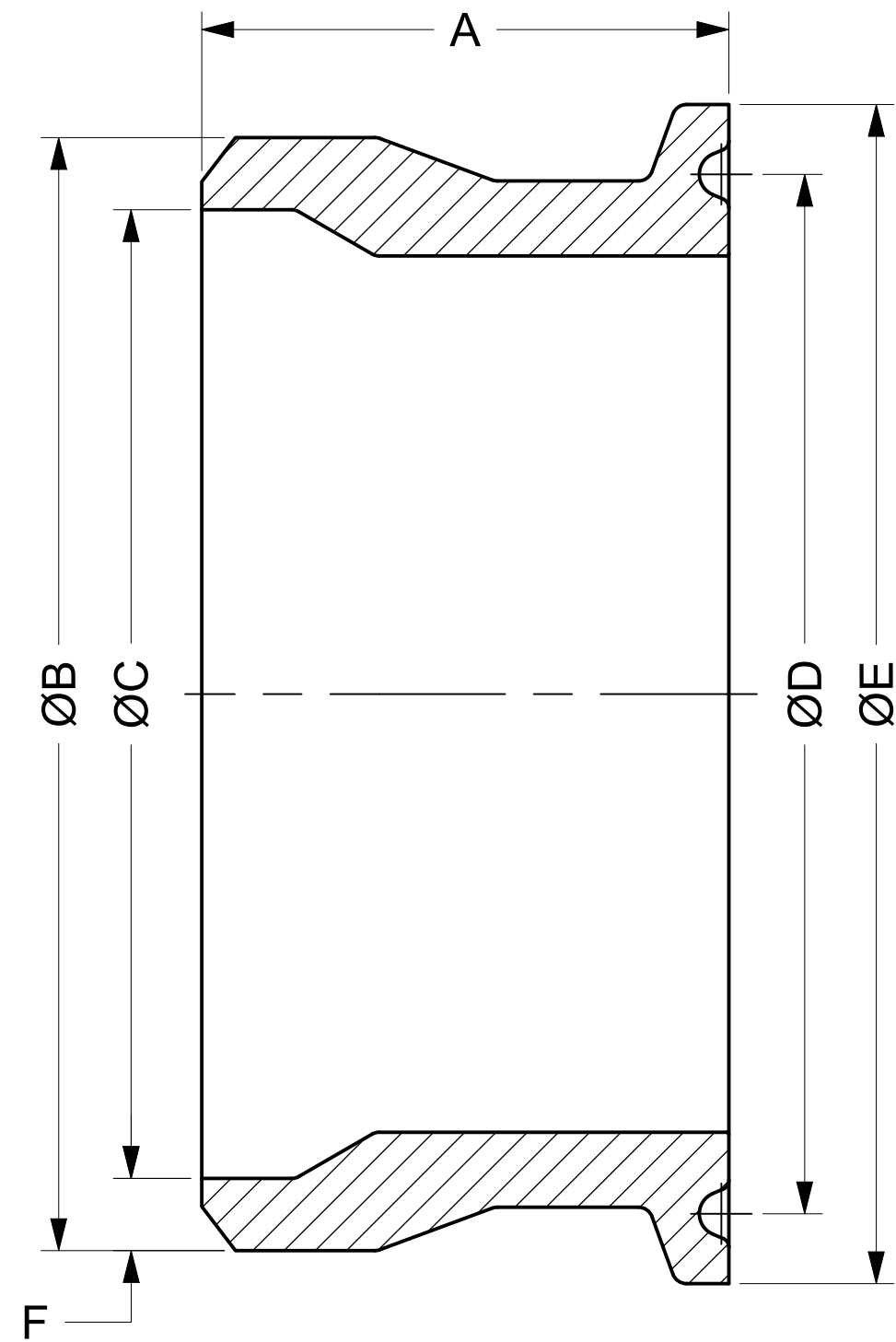


COMMON FINISHES		
DESIGNATION	PROCESS CONTACT	NON-PROCESS CONTACT
-1	MILL	MILL
-7	32 RA	32 RA
-PL	20 RA	32 RA
-PO	20 RA EP	32 RA
-PM	15 RA EP	32 RA



NOTE: COMPONENTS WITH A WALL THICKNESS >0.120" WILL HAVE A BEVEL ADDED TO END

PART SIZE		OAL (A)		OD (B)		ID (C)		GASKET DIAMETER (E)		FACE OD (D)		WALL THICKNESS (F)	
IN	MM	IN	MM	IN	MM	IN	MM	IN	MM	IN	MM	IN	MM
0.5	12.70	1.125	28.58	0.840	21.34	0.622	15.80	0.800	20.32	0.984	24.99	0.109	2.77
0.75	19.05	1.125	28.58	1.050	26.67	0.824	20.93	0.800	20.32	0.984	24.99	0.133	3.38
1	25.40	1.125	28.58	1.315	33.40	1.049	26.64	1.718	43.64	1.984	50.39	0.133	3.38
1.5	38.10	1.125	28.58	1.900	48.26	1.610	40.89	1.718	43.64	1.984	50.39	0.145	3.68
2	50.80	1.125	28.58	2.375	60.33	2.067	52.50	2.218	56.34	2.516	63.91	0.154	3.91
2.5	63.50	1.125	28.58	2.875	73.03	2.469	62.71	2.781	70.64	3.047	77.39	0.203	5.16
3	76.20	1.125	28.58	3.475	88.27	3.068	77.93	3.281	83.34	3.579	90.91	0.216	5.49
4	101.60	1.125	28.58	4.500	114.30	4.026	102.26	4.344	110.34	4.682	118.92	0.237	6.02
6	152.40	1.125	28.58	6.625	168.28	6.065	154.05	6.176	156.87	6.570	166.88	0.280	7.11

\* INFORMATION PROVIDED IN THIS DRAWING IS FOR REFERENCE ONLY. FINISH AVAILABILITY DEPENDANT ON MATERIAL



PART NO.:

19MP40

DESCRIPTION:

ADAPTER, TC X SCH 40  
PIPE BW, 1.125 OAL

MATERIAL OPTIONS:

- 304/304L SS
- 316/316L SS
- AL-6XN® - N08367
- HASTELLOY® C-22® - N06022

DWG NO.

CD19MP40

CREATION DATE

01DEC2025

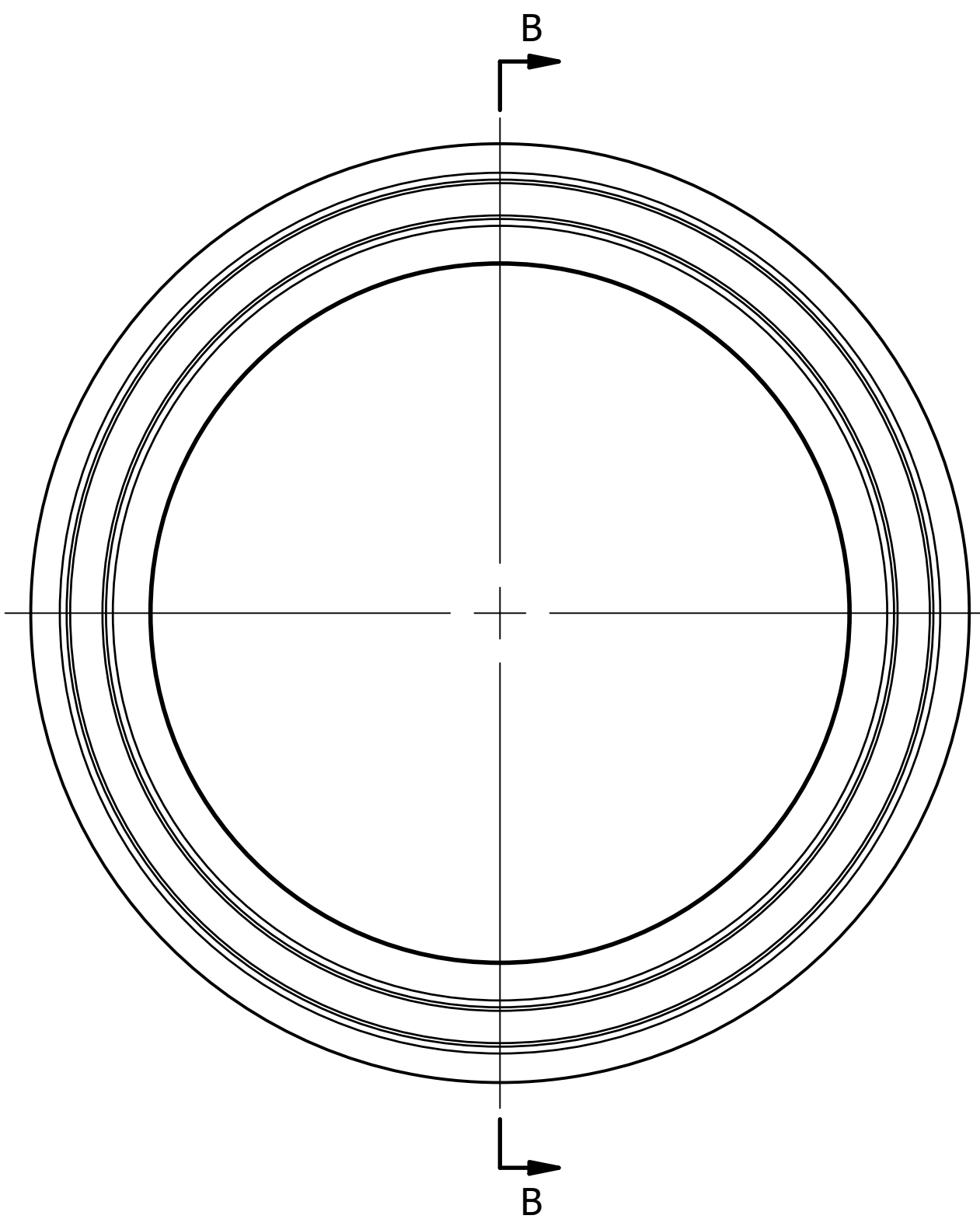
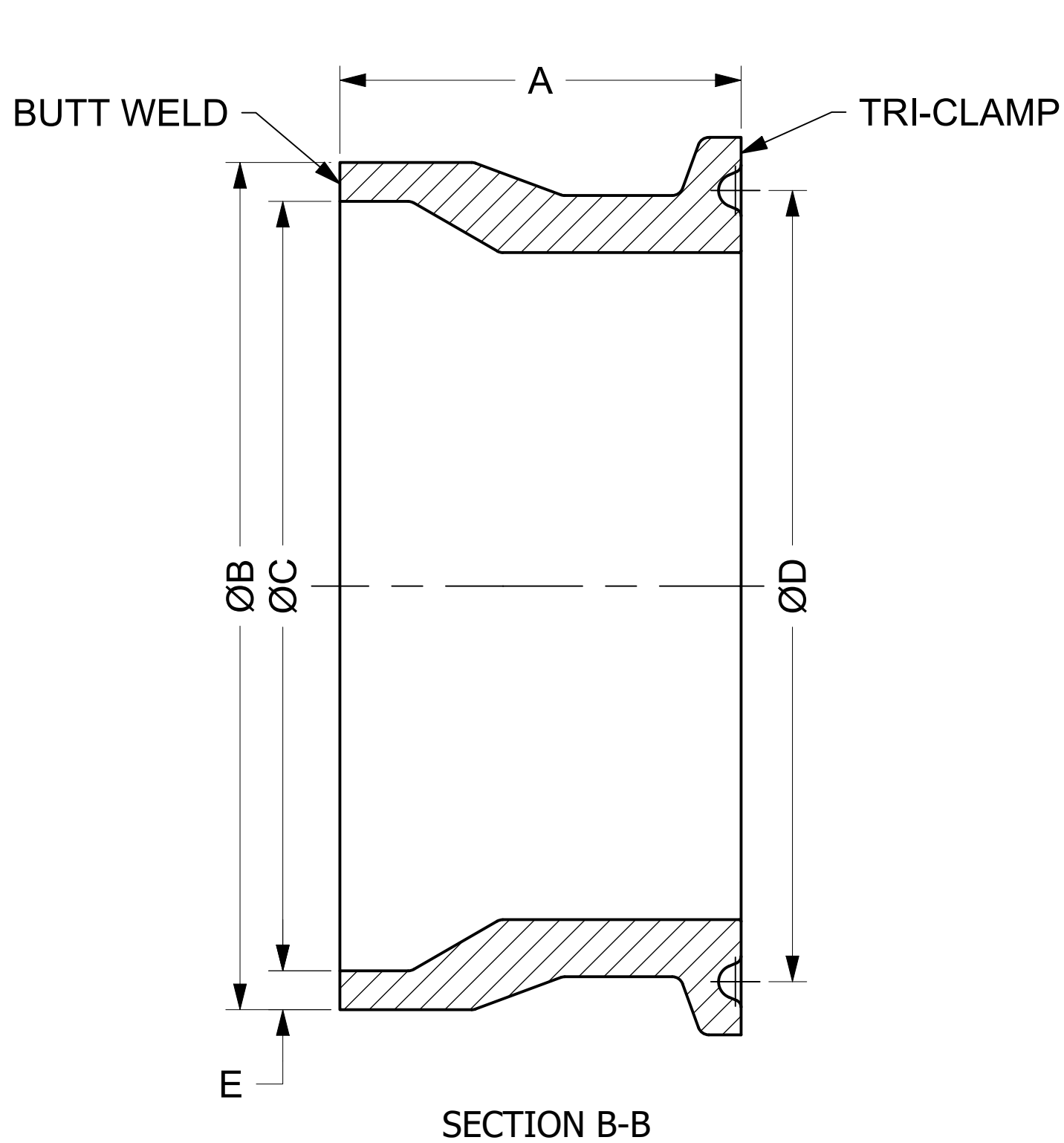
SHEET

1 OF 2

REV.

-

COMMON FINISHES		
DESIGNATION	PROCESS CONTACT	NON-PROCESS CONTACT
-1	MILL	MILL
-7	32 RA	32 RA
-PL	20 RA	32 RA
-PO	20 RA EP	32 RA
-PM	15 RA EP	32 RA



NOTE: COMPONENTS WITH A WALL THICKNESS > 0.120" WILL HAVE A BEVEL ADDED TO END

SIZE		OAL (A)		OD (B)		ID (C)		GASKET DIAMETER (D)		WALL THICKNESS (E)	
IN	MM	IN	MM	IN	MM	IN	MM	IN	MM	IN	MM
0.5	12.70	1.125	28.58	0.840	21.34	0.674	17.12	0.800	20.32	0.083	2.11
0.75	19.05	1.125	28.58	0.840	21.34	0.674	17.12	0.800	20.32	0.083	2.11
1	25.40	1.125	28.58	1.315	33.40	1.097	27.86	1.718	43.64	0.109	2.77
1.5	38.10	1.125	28.58	1.900	48.26	1.682	42.72	1.718	43.64	0.109	2.77
2	50.80	1.125	28.58	2.375	60.33	2.157	54.79	2.218	56.34	0.109	2.77
2.5	63.50	1.125	28.58	2.875	73.03	2.635	66.93	2.781	70.64	0.120	3.05
3	76.20	1.125	28.58	3.500	88.90	3.260	82.80	3.281	83.34	0.120	3.05
4	101.60	1.125	28.58	4.500	114.30	4.260	108.20	4.344	110.34	0.120	3.05
6	152.40	1.125	28.58	6.625	168.28	6.357	161.47	6.176	156.87	0.134	3.40

\* INFORMATION PROVIDED IN THIS DRAWING IS FOR REFERENCE ONLY. FINISH AVAILABILITY DEPENDANT ON MATERIAL



PART NO.:

19MP40

DESCRIPTION:

ADAPTER, TC X SCH 40  
PIPE BW, 1.125 OAL

MATERIAL OPTIONS:

304/304L SS
316/316L SS
AL-6XN® - N08367
HASTELLOY® C-22® - N06022

DWG NO.:

CD19MP40

CREATION DATE:

01DEC2025

SHEET:

2 OF 2

REV.:

-