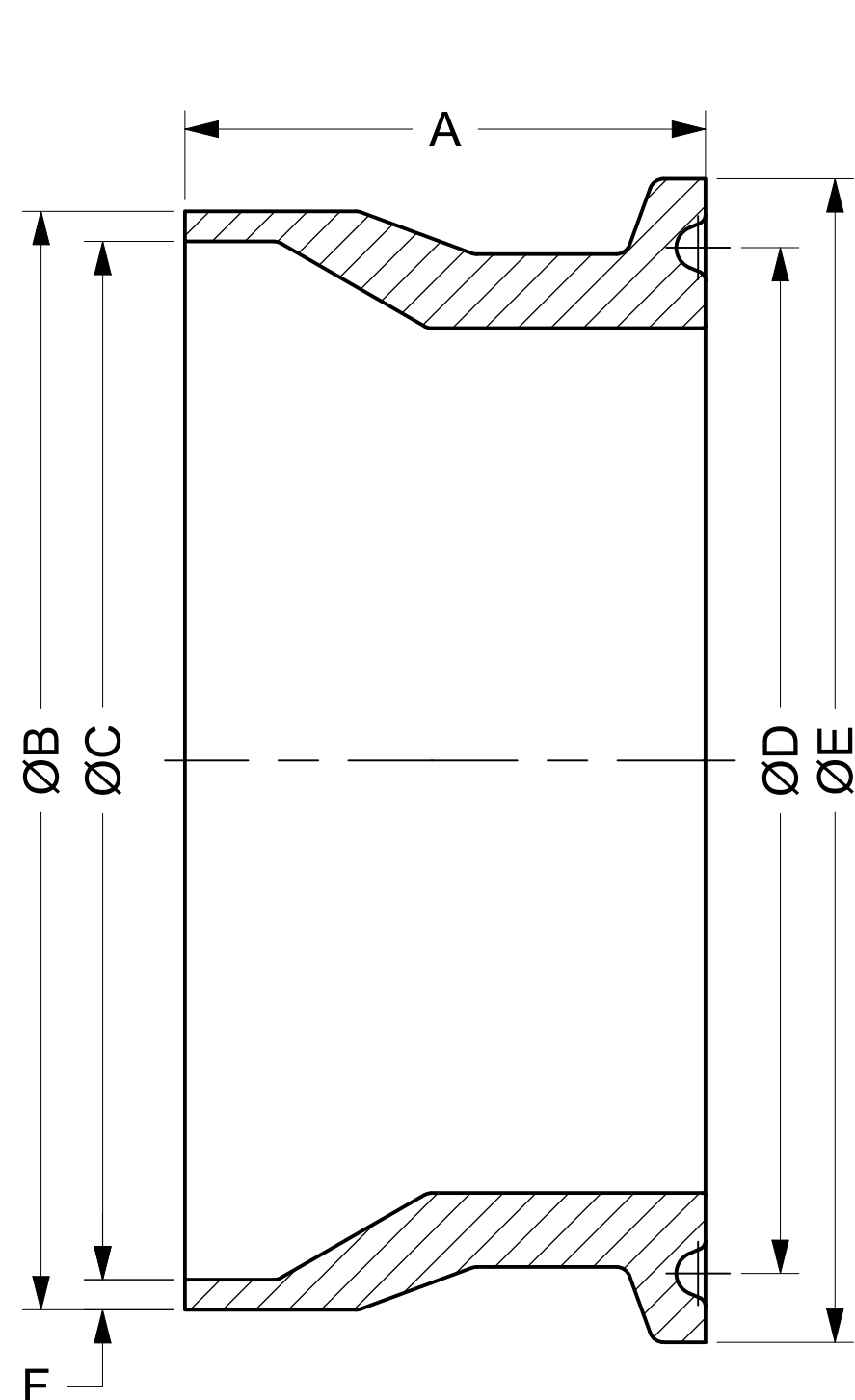
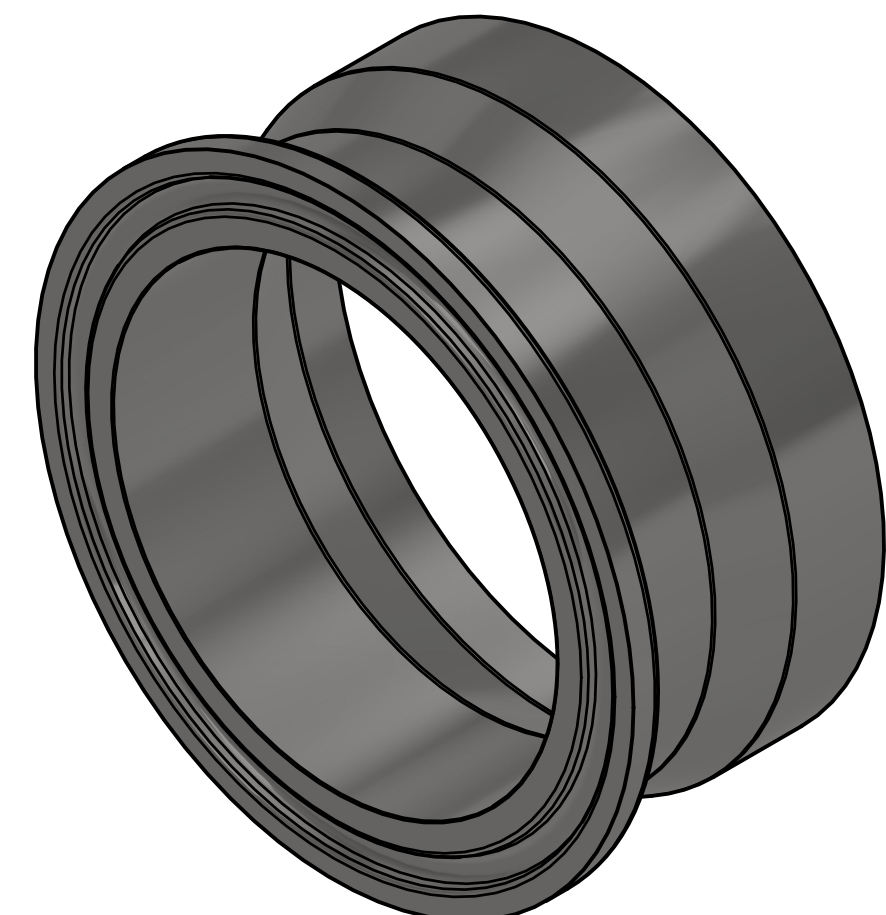
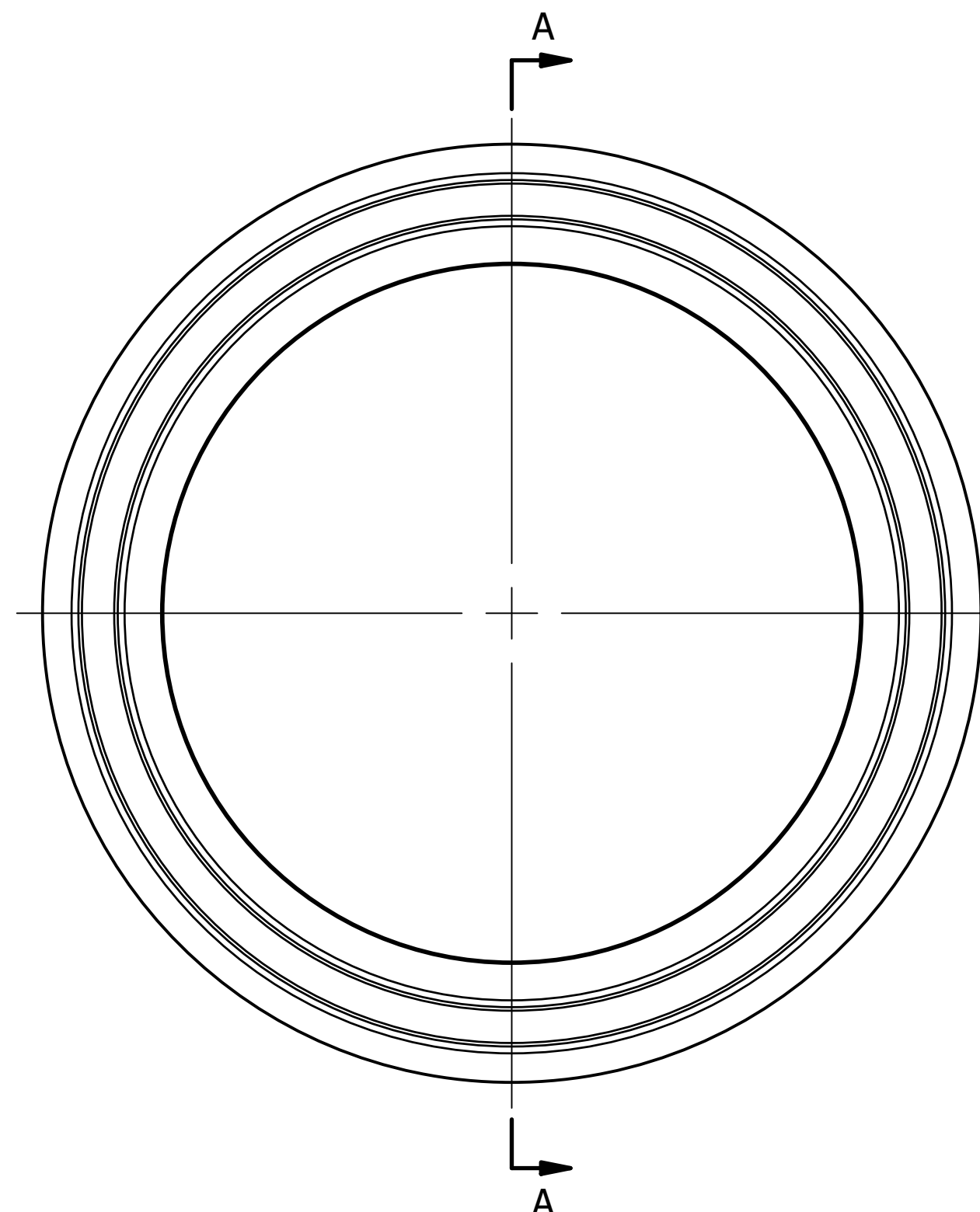


COMMON FINISHES		
DESIGNATION	PROCESS CONTACT	NON-PROCESS CONTACT
-1	MILL	MILL
-7	32 RA	32 RA
-PL	20 RA	32 RA
-PO	20 RA EP	32 RA
-PM	15 RA EP	32 RA



SECTION A-A



PART SIZE		OAL (A)		OD (B)		ID (C)		GASKET DIAMETER (D)		FACE OD (E)		WALL THICKNESS (F)	
IN	MM	IN	MM	IN	MM	IN	MM	IN	MM	IN	MM	IN	MM
0.5	12.70	1.125	28.58	0.840	21.34	0.710	18.03	0.800	20.32	0.984	24.99	0.065	1.65
0.75	19.05	1.125	28.58	1.050	26.67	0.920	23.37	0.800	20.32	0.984	24.99	0.065	1.65
1	25.40	1.125	28.58	1.315	33.40	1.185	30.10	1.718	43.64	1.984	50.39	0.065	1.65
1.5	38.10	1.125	28.58	1.900	48.26	1.770	44.96	1.718	43.64	1.984	50.39	0.065	1.65
2	50.80	1.125	28.58	2.375	60.33	2.245	57.02	2.218	56.34	2.516	63.91	0.065	1.65
2.5	63.50	1.125	28.58	2.875	73.03	2.709	68.81	2.781	70.64	3.047	77.39	0.083	2.11
3	76.20	1.125	28.58	3.500	88.90	3.334	84.68	3.281	83.34	3.579	90.91	0.083	2.11
4	101.60	1.125	28.58	4.500	114.30	4.334	110.08	4.344	110.34	4.682	118.92	0.083	2.11
6	152.40	1.125	28.58	6.625	168.28	6.407	162.74	6.176	156.87	6.570	166.88	0.109	2.77

* INFORMATION PROVIDED IN THIS DRAWING IS FOR REFERENCE ONLY. FINISH AVAILABILITY DEPENDANT ON MATERIAL



PART NO.:

19MPV

DESCRIPTION:

ADAPTER, TC X SCH 5
PIPE BW, 1.125 OAL

MATERIAL OPTIONS:

304/304L SS
316/316L SS
AL-6XN® - N08367
HASTELLOY® C-22® - N06022

DWG NO.

CD19MPV

CREATION DATE

01DEC2025

SHEET

1 OF 1

REV.

-