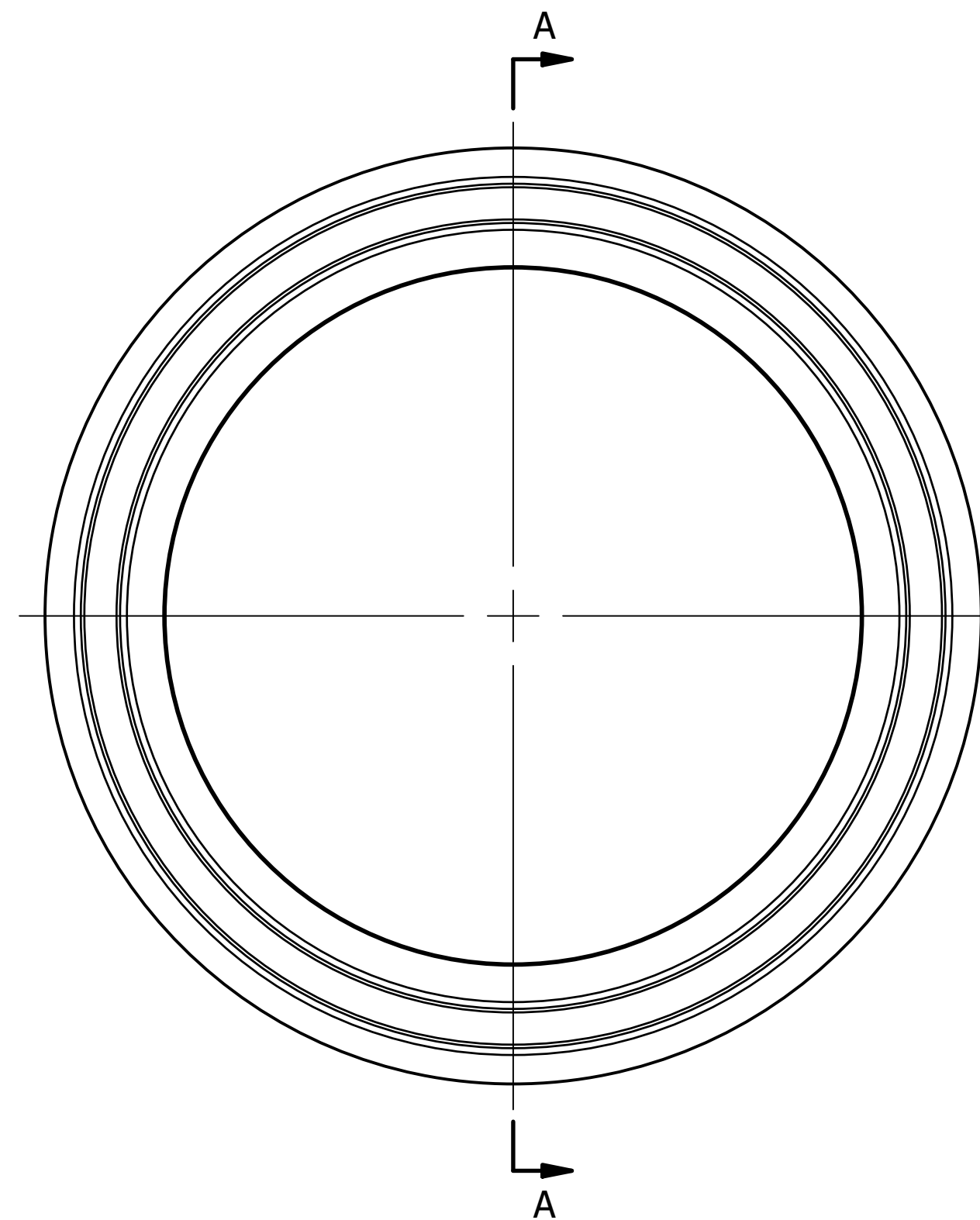
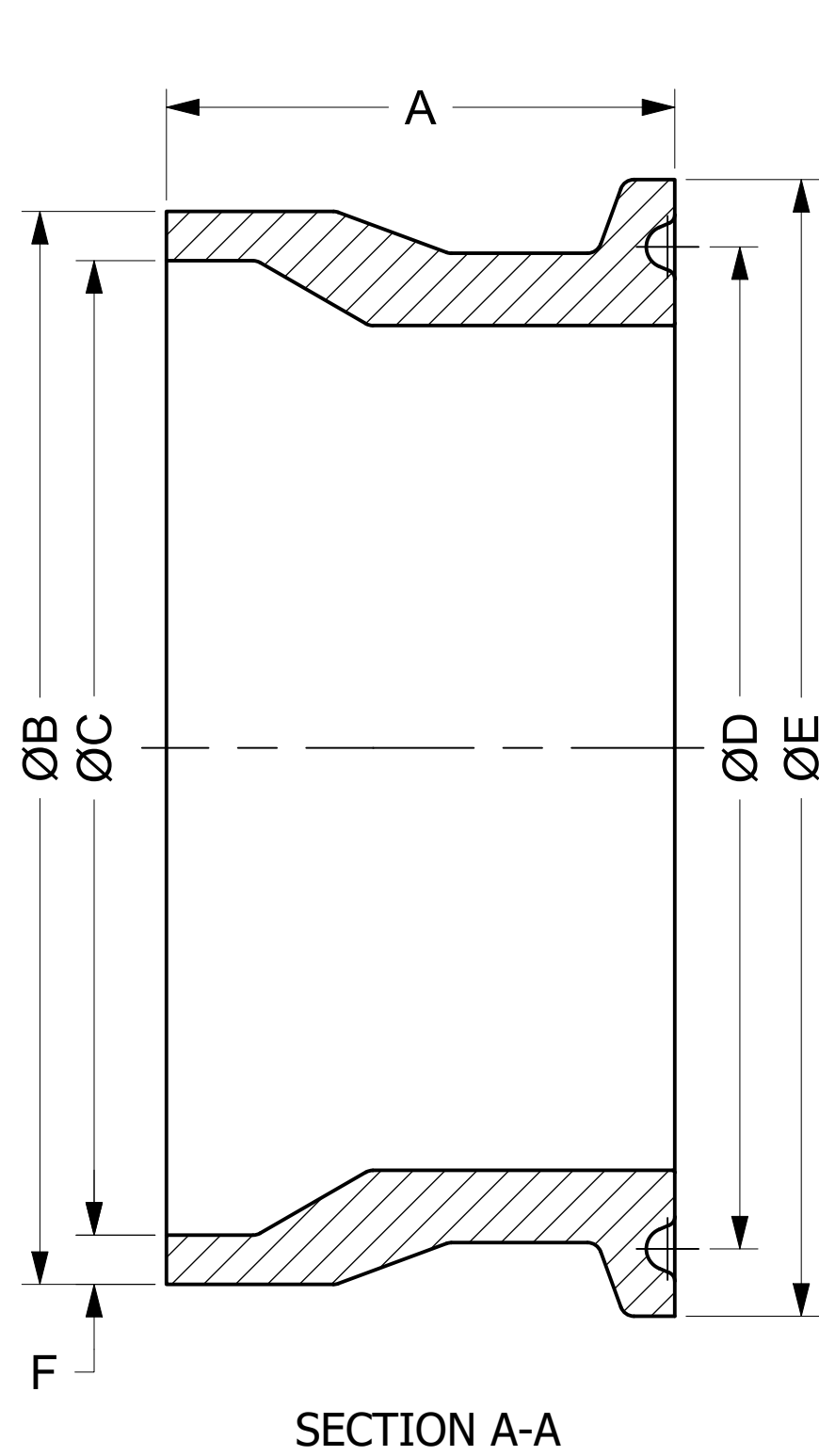
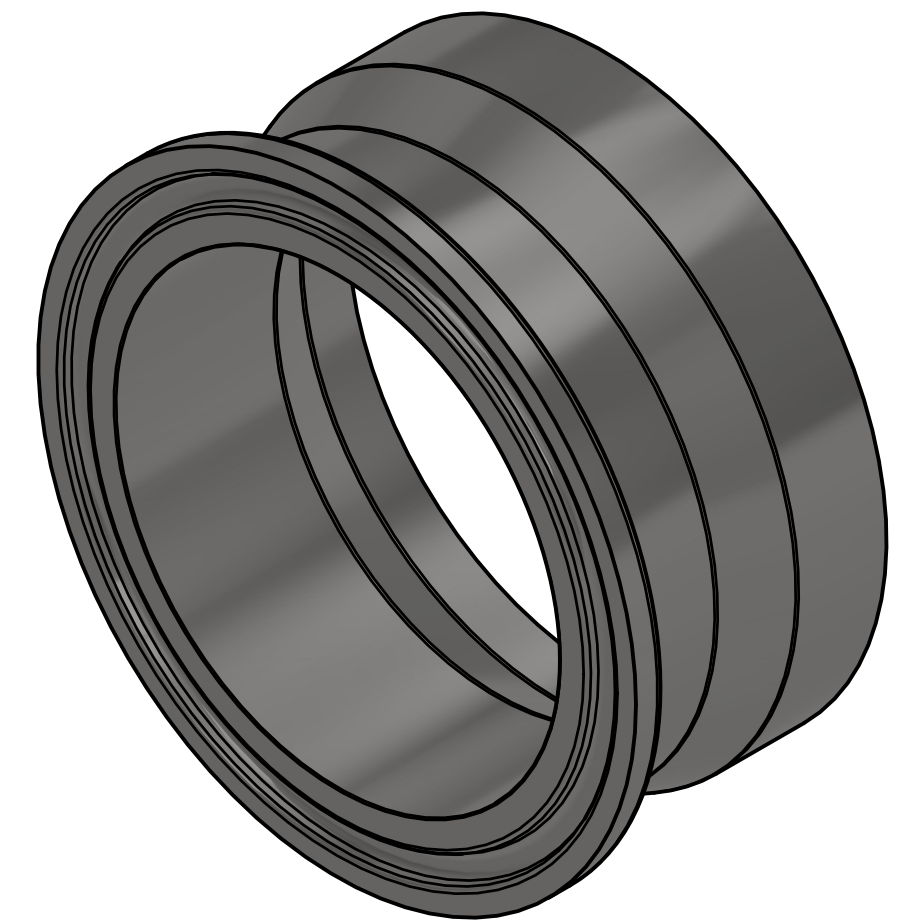


COMMON FINISHES		
DESIGNATION	PROCESS CONTACT	NON-PROCESS CONTACT
-1	MILL	MILL
-7	32 RA	32 RA
-PL	20 RA	32 RA
-PO	20 RA EP	32 RA
-PM	15 RA EP	32 RA



NOTE: COMPONENTS WITH A WALL THICKNESS > 0.120" WILL HAVE A BEVEL ADDED TO END

PART SIZE		OAL (A)		OD (B)		ID (C)		GASKET DIAMETER (D)		FACE OD (E)		WALL THICKNESS (F)	
IN	MM	IN	MM	IN	MM	IN	MM	IN	MM	IN	MM	IN	MM
0.5	12.70	1.125	28.58	0.840	21.34	0.674	17.12	0.800	20.32	0.984	24.99	0.083	2.11
0.75	19.05	1.125	28.58	0.050	1.27	0.884	22.45	0.800	20.32	0.984	24.99	0.083	2.11
1	25.40	1.125	28.58	1.315	33.40	1.097	27.86	1.718	43.64	1.984	50.39	0.109	2.77
1.5	38.10	1.125	28.58	1.900	48.26	1.682	42.72	1.718	43.64	1.984	50.39	0.109	2.77
2	50.80	1.125	28.58	2.375	60.33	2.157	54.79	2.218	56.34	2.516	63.91	0.109	2.77
2.5	63.50	1.125	28.58	2.875	73.03	2.635	66.93	2.781	70.64	3.047	77.39	0.120	3.05
3	76.20	1.125	28.58	3.500	88.90	3.260	82.80	3.281	83.34	3.579	90.91	0.120	3.05
4	101.60	1.125	28.58	4.500	114.30	4.260	108.20	4.344	110.34	4.682	118.92	0.120	3.05
6	152.40	1.125	28.58	6.625	168.28	6.357	161.47	6.176	156.87	6.570	166.88	0.134	3.40

* INFORMATION PROVIDED IN THIS DRAWING IS FOR REFERENCE ONLY. FINISH AVAILABILITY DEPENDANT ON MATERIAL



PART NO.:

19MPX

DESCRIPTION:

ADAPTER, TC X SCH10
PIPE BW, 1.125" OAL

MATERIAL OPTIONS:

304/304L SS

316/316L SS

AL-6XN® - N08367

HASTELLOY® C-22® - N06022

DWG NO.

CD19MPX

CREATION DATE

26NOV2025

SHEET

1 OF 1

REV.

-