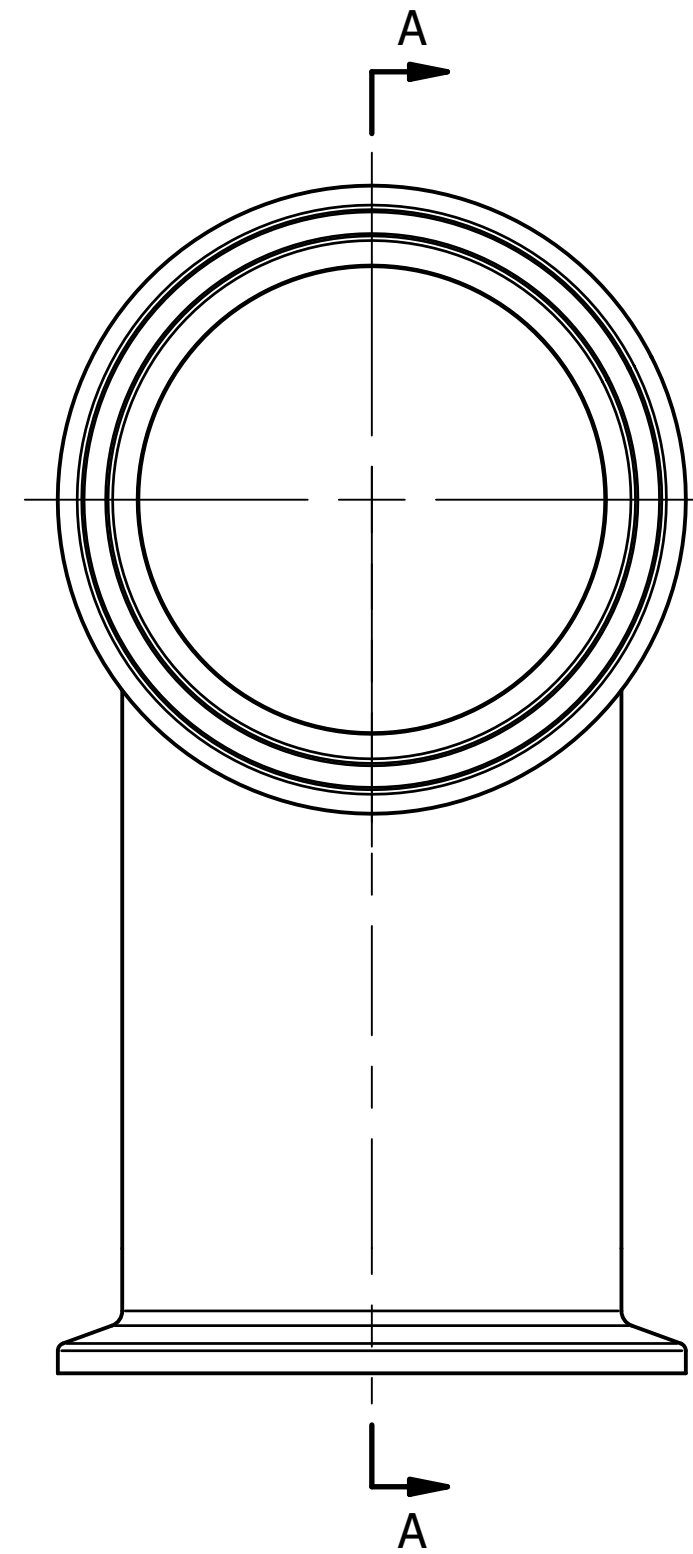
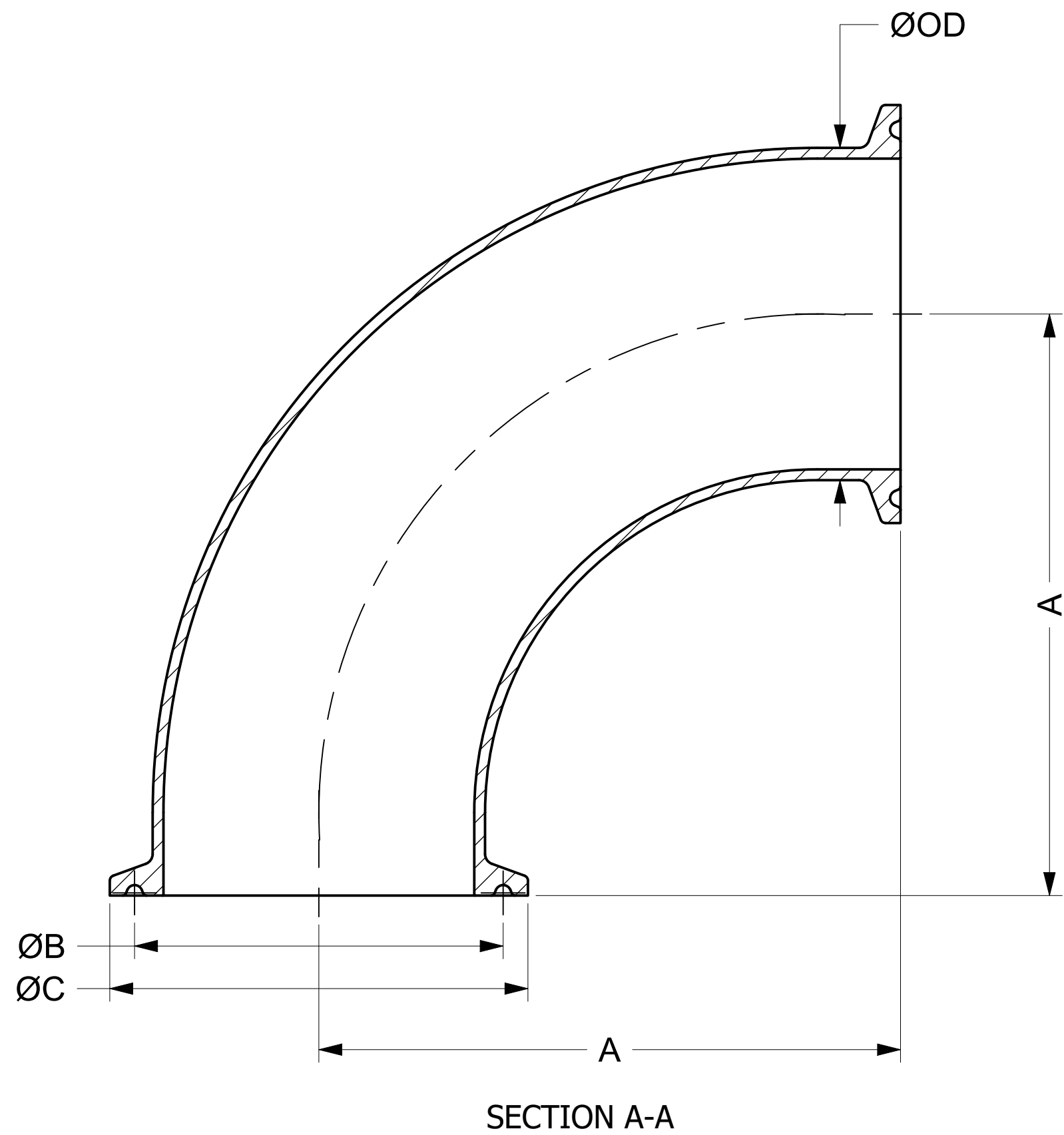
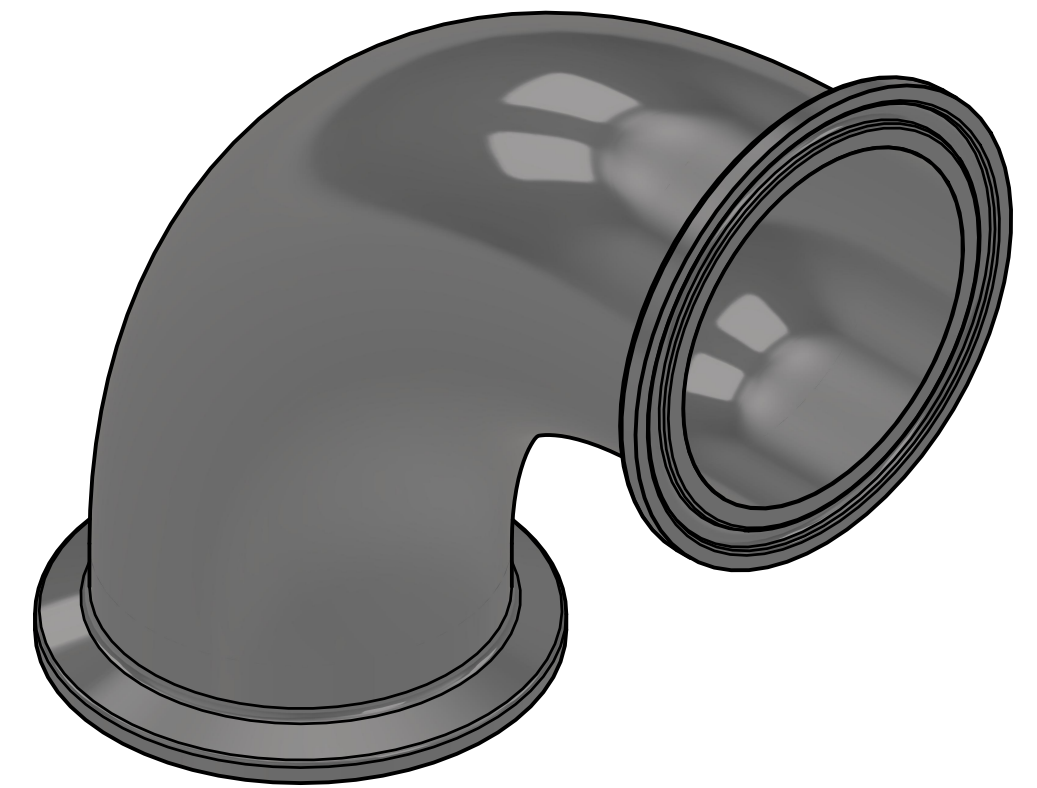


COMMON FINISHES

DESIGNATION	PROCESS CONTACT	NON-PROCESS CONTACT
-1	MILL	MILL
-7	32 RA	32 RA
-PL	20 RA	32 RA
-PO	20 RA EP	32 RA
-PM	15 RA EP	32 RA



NOMINAL SIZE		A		B		C		OD	
IN	MM	IN	MM	IN	MM	IN	MM	IN	MM
0.25	6.35	1.625	41.28	0.800	20.32	0.984	24.99	0.250	6.35
0.375	9.53	1.625	41.28	0.800	20.32	0.984	24.99	0.375	9.53
0.5	12.70	1.625	41.28	0.800	20.32	0.984	24.99	0.500	12.70
0.75	19.05	1.625	41.28	0.800	20.32	0.984	24.99	0.750	19.05
1	25.40	2.000	50.80	1.718	43.64	1.984	50.39	1.000	25.40
1.5	38.10	2.750	69.85	1.718	43.64	1.984	50.39	1.500	38.10
2	50.80	3.500	88.90	2.218	56.34	2.516	63.91	2.000	50.80
2.5	63.50	4.250	107.95	2.781	70.64	3.047	77.39	2.500	63.50
3	76.20	5.000	127.00	3.281	83.34	3.579	90.91	3.000	76.20
4	101.60	6.625	168.28	4.344	110.34	4.682	118.92	4.000	101.60
6	152.40	10.500	266.70	6.176	156.87	6.570	166.88	6.000	152.40

\* INFORMATION PROVIDED IN THIS DRAWING IS FOR REFERENCE ONLY. FINISH AVAILABILITY DEPENDANT ON MATERIAL



PART NO.: **B2CMP**

DESCRIPTION: **90 DEG ELBOW, TC**

MATERIAL OPTIONS:  
 304/304L SS  
 316/316L SS  
 AL-6XN® - N08367  
 HASTELLOY® C-22® - N06022

DWG NO.: **CDB2CMP**  
 CREATION DATE: 29JUL2025  
 SHEET: 1 OF 1  
 REV: -