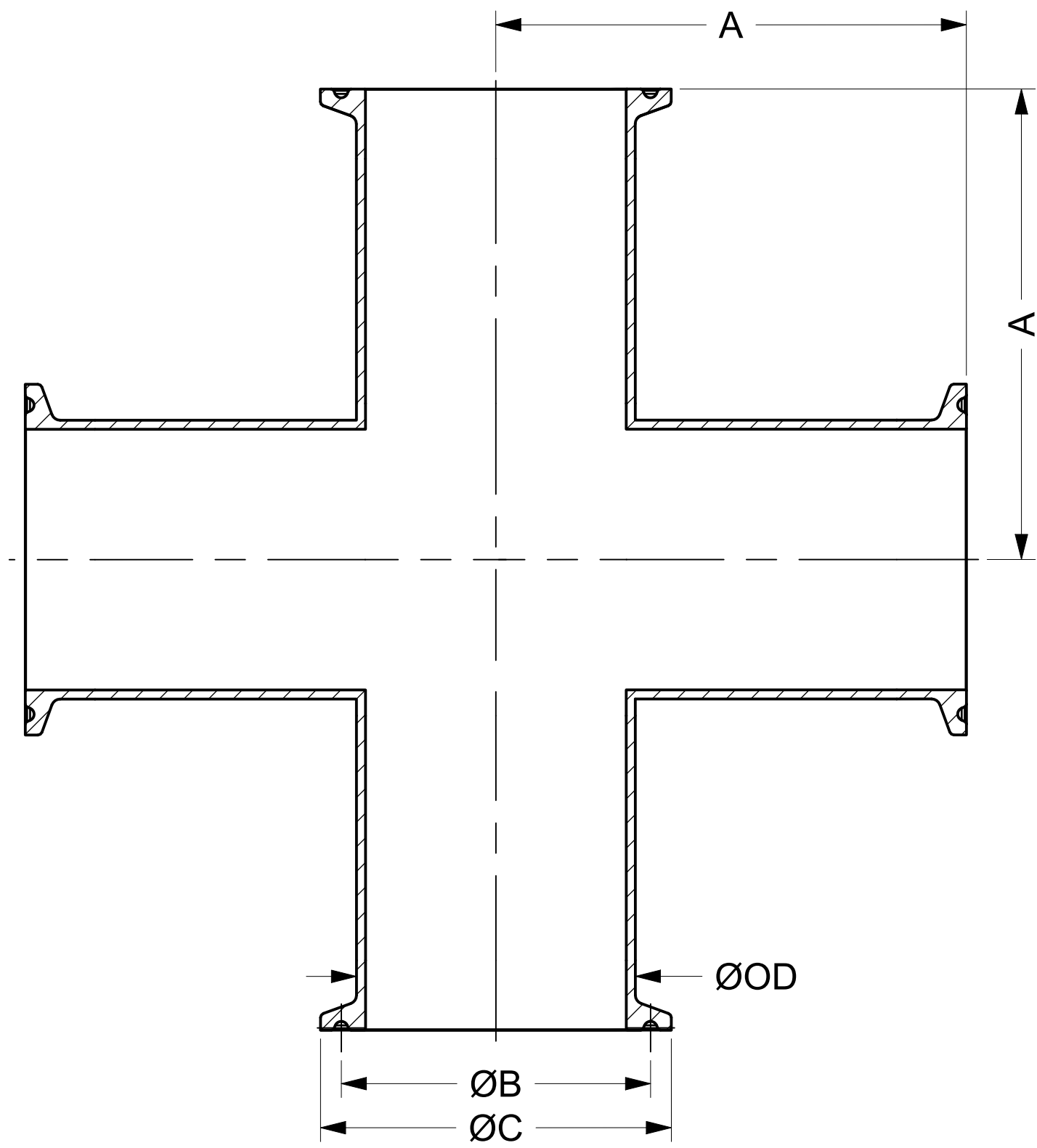
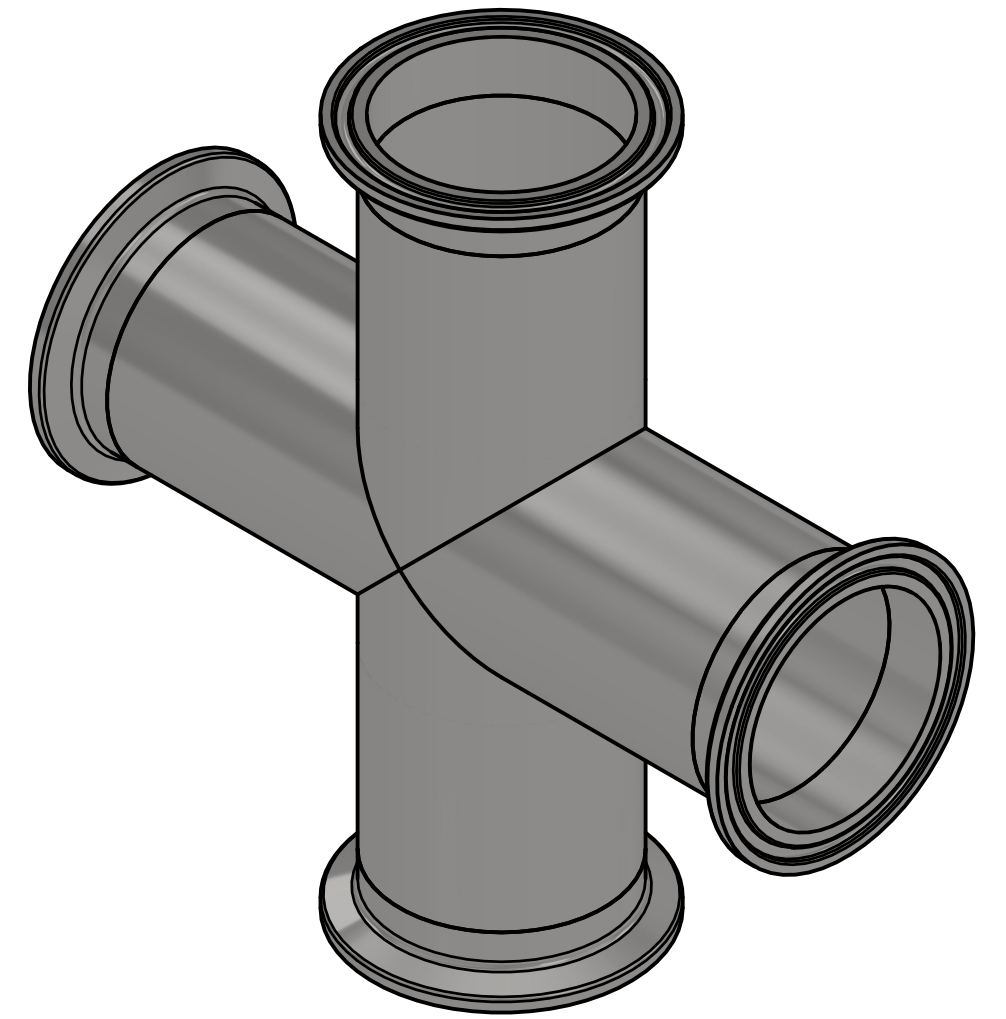
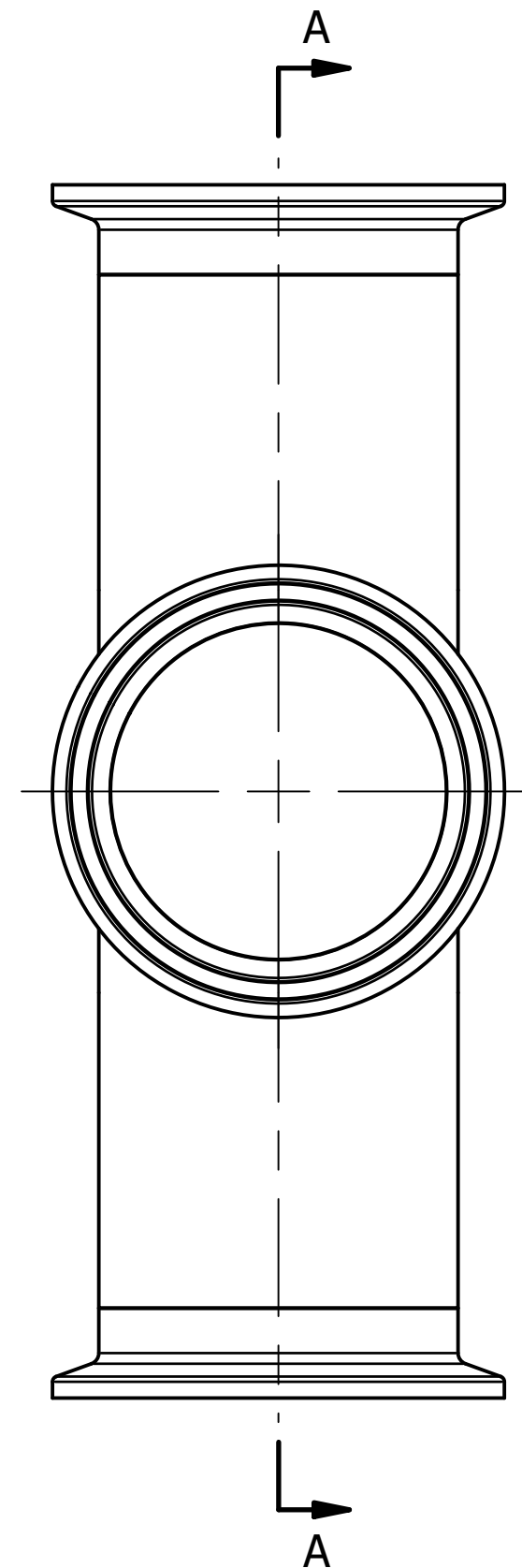


COMMON FINISHES		
DESIGNATION	PROCESS CONTACT	NON-PROCESS CONTACT
-1	MILL	MILL
-7	32 RA	32 RA
-PL	20 RA	32 RA
-PO	20 RA EP	32 RA
-PM	15 RA EP	32 RA



SECTION A-A



NOMINAL SIZE		A		B		C		OD	
IN	MM	IN	MM	IN	MM	IN	MM	IN	MM
0.25	6.35	2.250	57.15	0.800	20.32	0.984	24.99	0.250	6.35
0.375	9.53	2.250	57.15	0.800	20.32	0.984	24.99	0.375	9.53
0.5	12.70	2.375	60.33	0.800	20.32	0.984	24.99	0.500	12.70
0.75	19.05	2.375	60.33	0.800	20.32	0.984	24.99	0.750	19.05
1	25.40	2.625	66.68	1.718	43.64	1.984	50.39	1.000	25.40
1.5	38.10	2.875	73.03	1.718	43.64	1.984	50.39	1.500	38.10
2	50.80	3.375	85.73	2.218	56.34	2.516	63.91	2.000	50.80
2.5	63.50	3.625	92.08	2.781	70.64	3.047	77.39	2.500	63.50
3	76.20	3.875	98.43	3.281	83.34	3.579	90.91	3.000	76.20
4	101.60	4.750	120.65	4.344	110.34	4.682	118.92	4.000	101.60
6	152.40	7.125	180.98	6.176	156.87	6.570	166.88	6.000	152.40

\* INFORMATION PROVIDED IN THIS DRAWING IS FOR REFERENCE ONLY. FINISH AVAILABILITY DEPENDANT ON MATERIAL



PART NO.: **B9MP**

DESCRIPTION: **CROSS, TC**

MATERIAL OPTIONS:  
 304/304L SS  
 316/316L SS  
 AL-6XN® - N08367  
 HASTELLOY® C-22® - N06022

DWG NO.: **CDB9MP**  
 CREATION DATE: 19JAN2026  
 SHEET: 1 OF 1  
 REV.: -