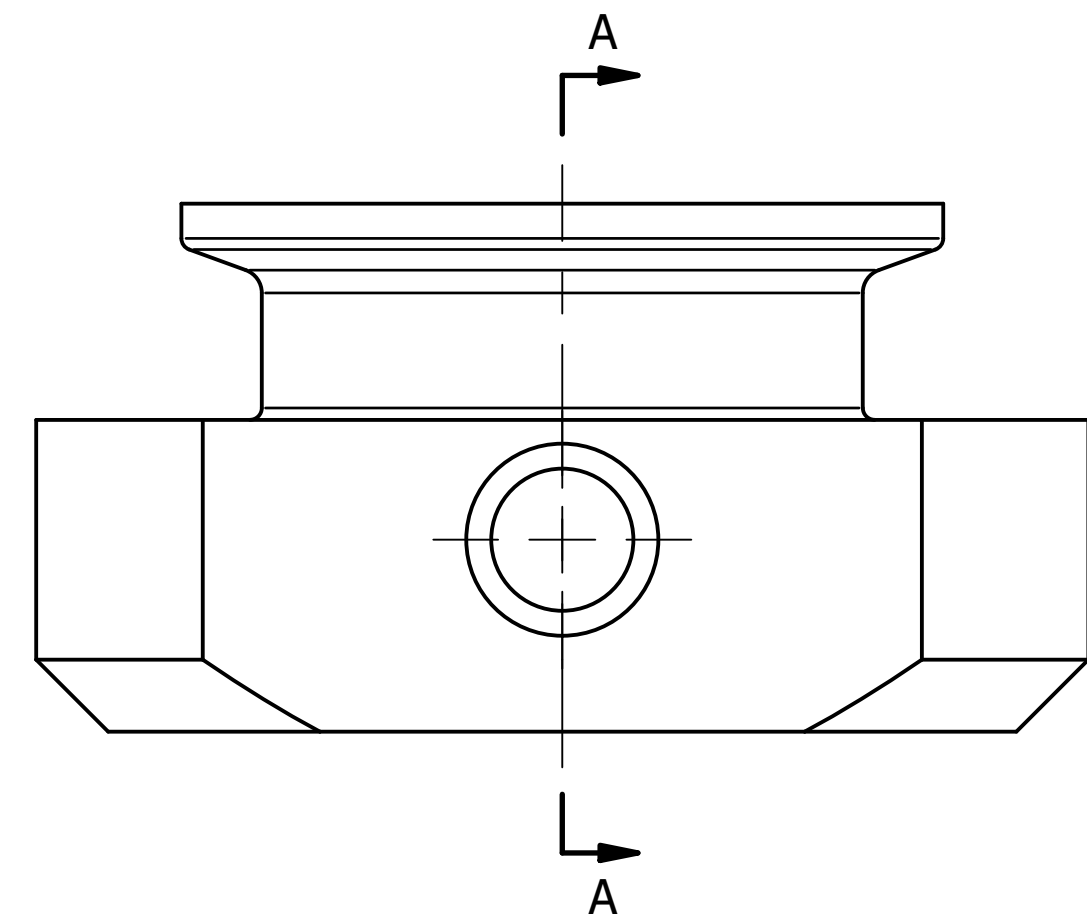
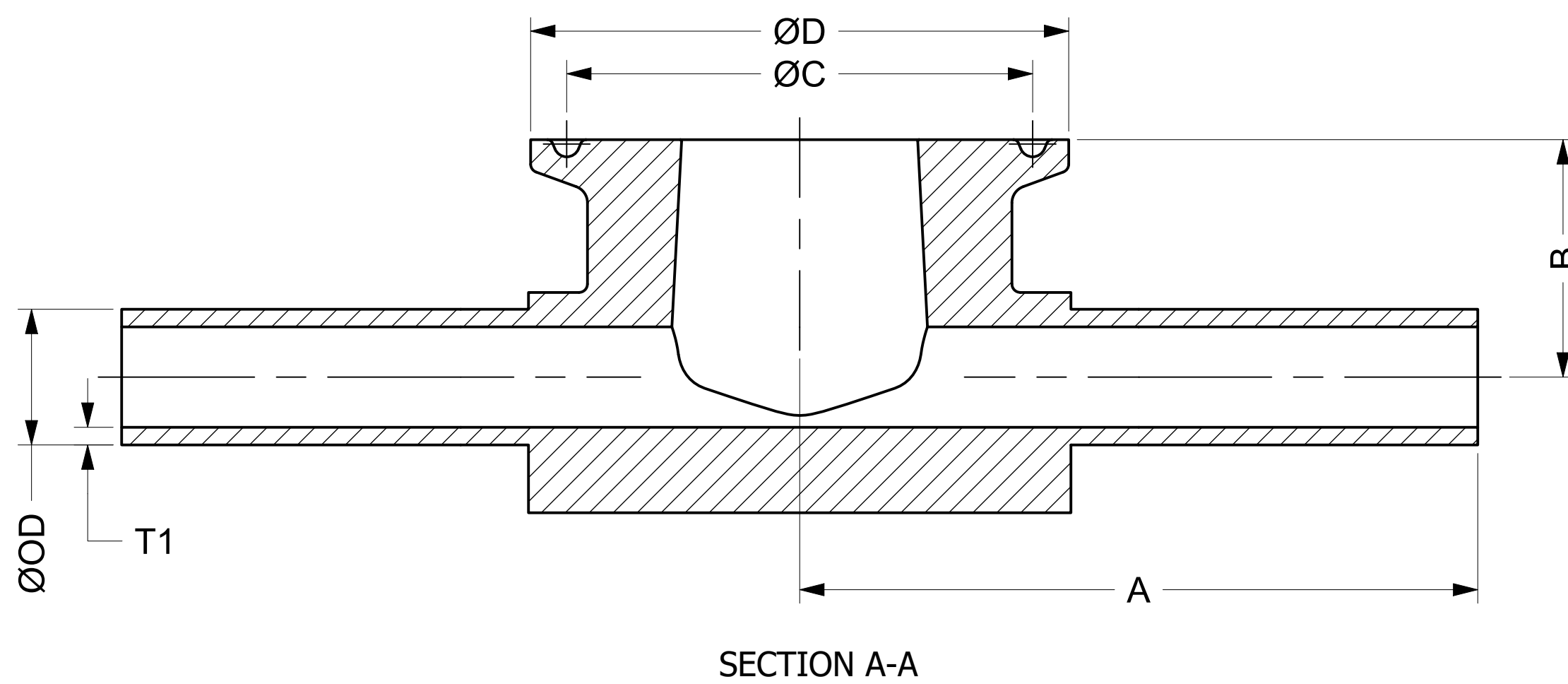
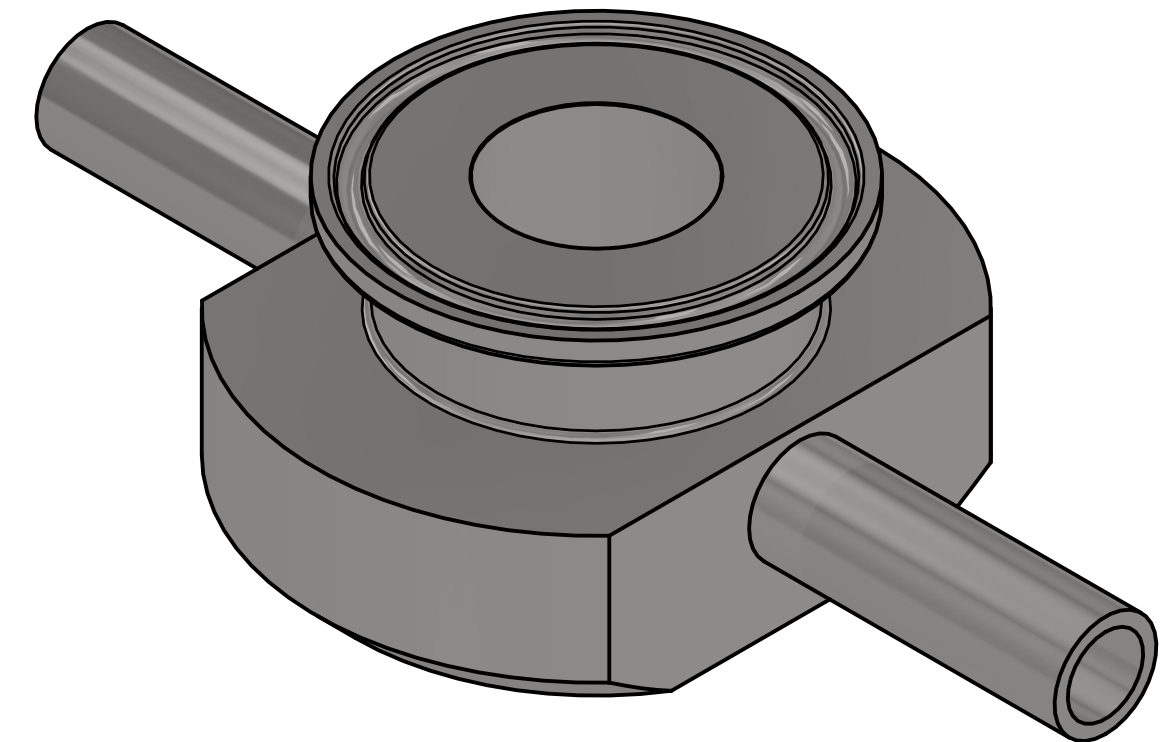


COMMON FINISHES		
DESIGNATION	PROCESS CONTACT	NON-PROCESS CONTACT
-1	MILL	MILL
-7	32 RA	32 RA
-PL	20 RA	32 RA
-PO	20 RA EP	32 RA
-PM	15 RA EP	32 RA



NOMINAL SIZE	A		B		C		D		OD		T1	
	IN	MM	IN	MM	IN	MM	IN	MM	IN	MM	IN	MM
0.5 X 1.5	2.500	63.50	0.875	22.23	1.718	43.64	1.984	50.39	0.500	12.70	0.065	1.65
0.5 X 2	2.750	69.85	1.000	25.40	2.218	56.34	2.516	63.91	0.500	12.70	0.065	1.65
0.75 X 1.5	2.500	63.50	1.000	25.40	1.718	43.64	1.984	50.39	0.750	19.05	0.065	1.65
0.75 X 2	2.750	69.85	1.125	28.58	2.218	56.34	2.516	63.91	0.750	19.05	0.065	1.65
1 X 1.5	2.500	63.50	1.125	28.58	1.718	43.64	1.984	50.39	1.000	25.40	0.065	1.65
1 X 2	2.750	69.85	1.250	31.75	2.218	56.34	2.516	63.91	1.000	25.40	0.065	1.65
1.5 X 2	2.750	69.85	1.500	38.10	2.218	56.34	2.516	63.91	1.500	38.10	0.065	1.65

* INFORMATION PROVIDED IN THIS DRAWING IS FOR REFERENCE ONLY. FINISH AVAILABILITY DEPENDANT ON MATERIAL



PART NO.:

B7IWWMS

DESCRIPTION:

INSTRUMENT TEE BLANK,
BW X BW, TC

MATERIAL OPTIONS:

304/304L SS

316/316L SS

AL-6XN® - N08367

HASTELLOY® C-22® - N06022

DWG NO.

CDB7IWWMS

CREATION DATE

03NOV2025

SHEET

1 OF 1

REV.

-