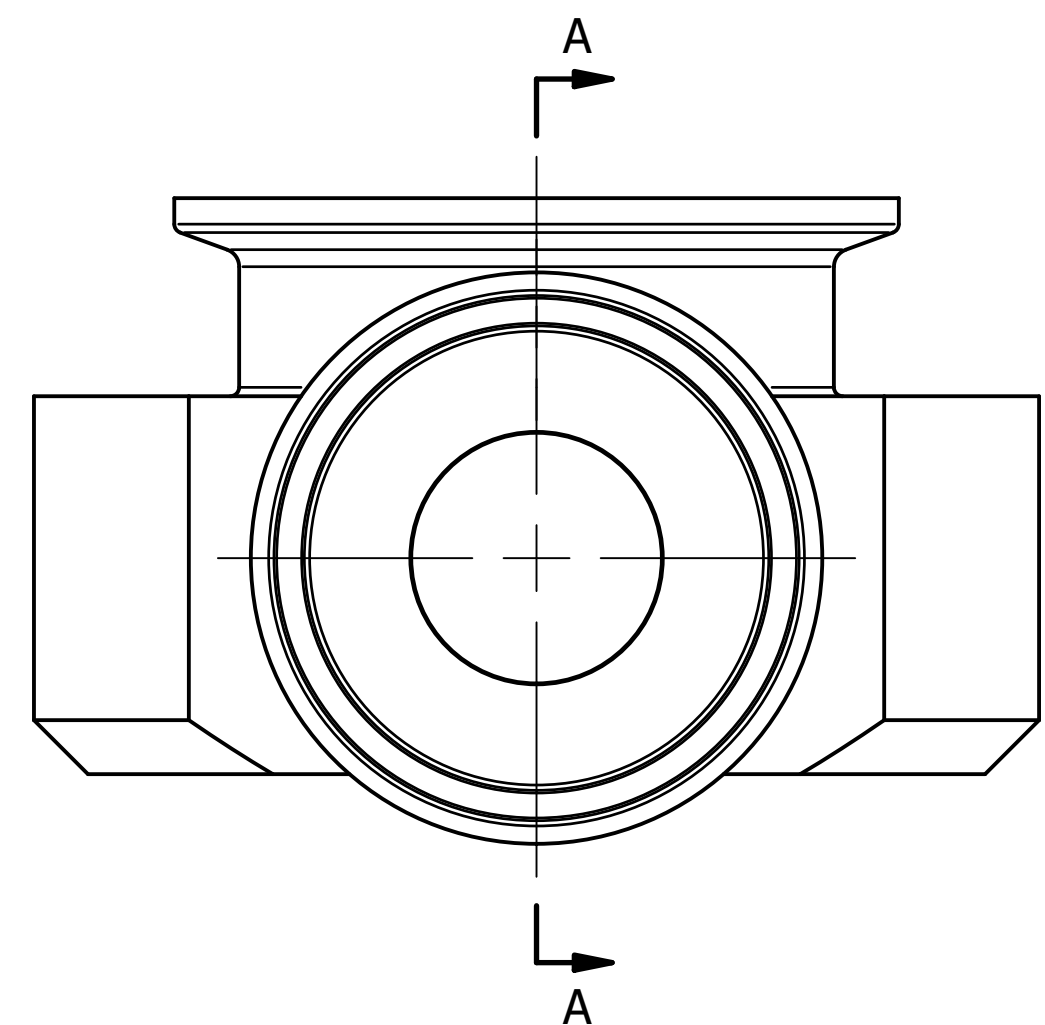
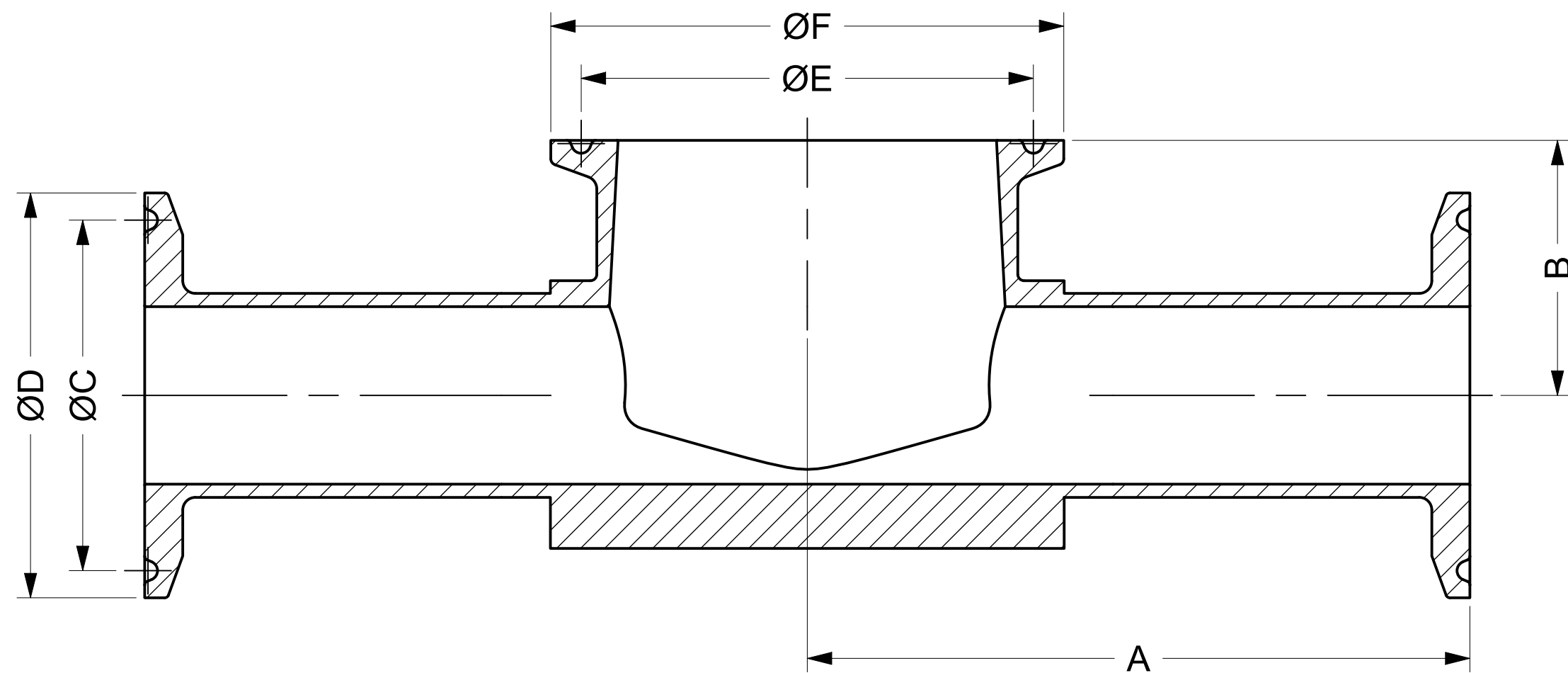
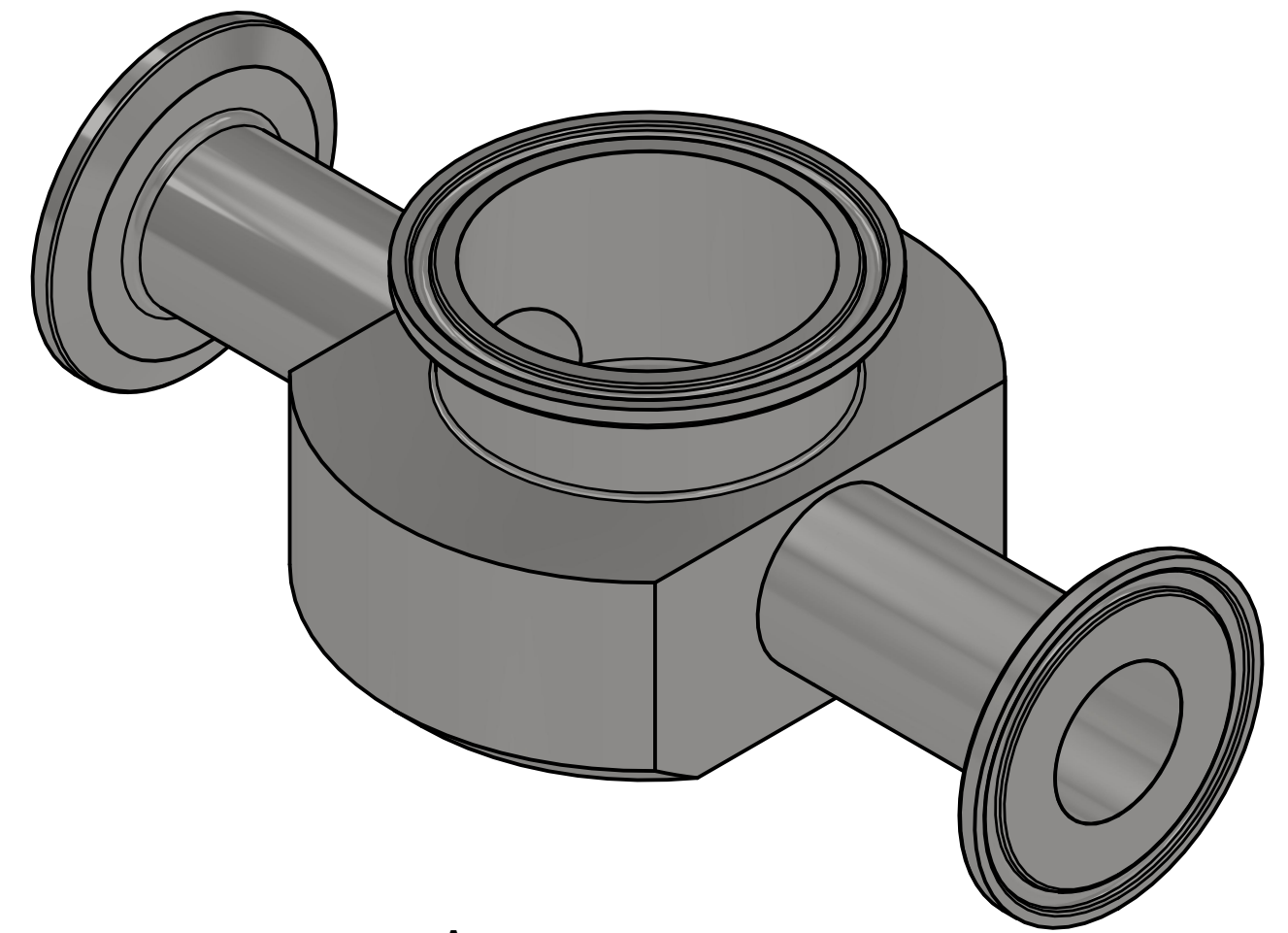


COMMON FINISHES		
DESIGNATION	PROCESS CONTACT	NON-PROCESS CONTACT
-1	MILL	MILL
-7	32 RA	32 RA
-PL	20 RA	32 RA
-PO	20 RA EP	32 RA
-PM	15 RA EP	32 RA



SECTION A-A

NOMINAL SIZE	A		B		C		D		E		F	
	IN	MM	IN	MM	IN	MM	IN	MM	IN	MM	IN	MM
0.5 X 1.5	3.000	76.20	0.875	22.23	0.800	20.32	0.984	24.99	1.718	43.64	1.984	50.39
0.5 X 2	3.250	82.55	1.000	25.40	0.800	20.32	0.984	24.99	2.218	56.34	2.516	63.91
0.75 X 1.5	3.000	76.20	1.000	25.40	0.800	20.32	0.984	24.99	1.718	43.64	1.984	50.39
0.75 X 2	3.250	82.55	1.125	28.58	0.800	20.32	0.984	24.99	2.218	56.34	2.516	63.91
1 X 1.5	3.000	76.20	1.125	28.58	1.718	43.64	1.984	50.39	1.718	43.64	1.984	50.39
1 X 2	3.250	82.55	1.250	31.75	1.718	43.64	1.984	50.39	2.218	56.34	2.516	63.91
1.5 X 2	3.250	82.55	1.500	38.10	1.718	43.64	1.984	50.39	2.218	56.34	2.516	63.91

\* INFORMATION PROVIDED IN THIS DRAWING IS FOR REFERENCE ONLY. FINISH AVAILABILITY DEPENDANT ON MATERIAL



PART NO.:

**B7IMPS**

DESCRIPTION:

**INSTRUMENT TEE, TC**

MATERIAL OPTIONS:

304/304L SS

316/316L SS

AL-6XN® - N08367

HASTELLOY® C-22® - N06022

DWG NO.

**CDB7IMPS**

CREATION DATE

27OCT2025

SHEET

1 OF 1

REV.

-