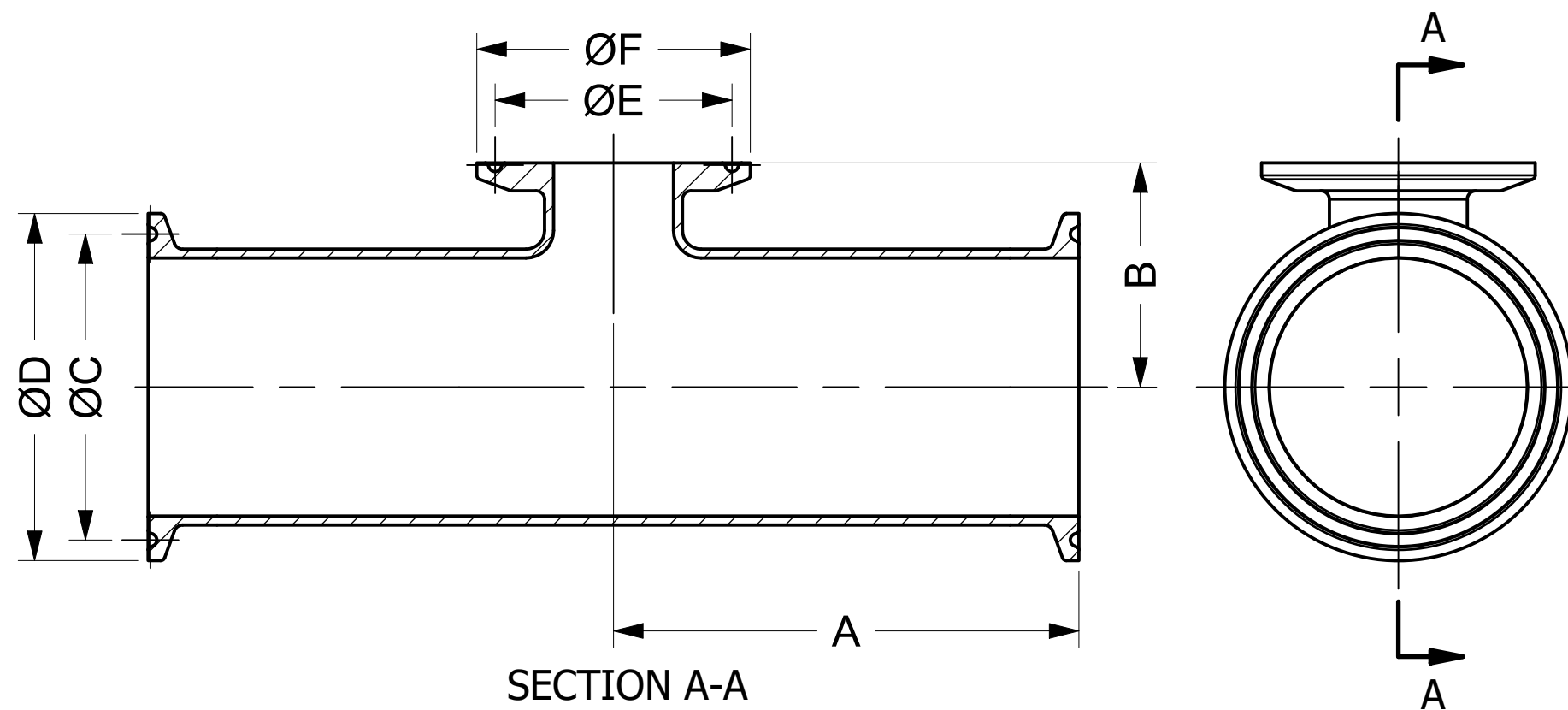
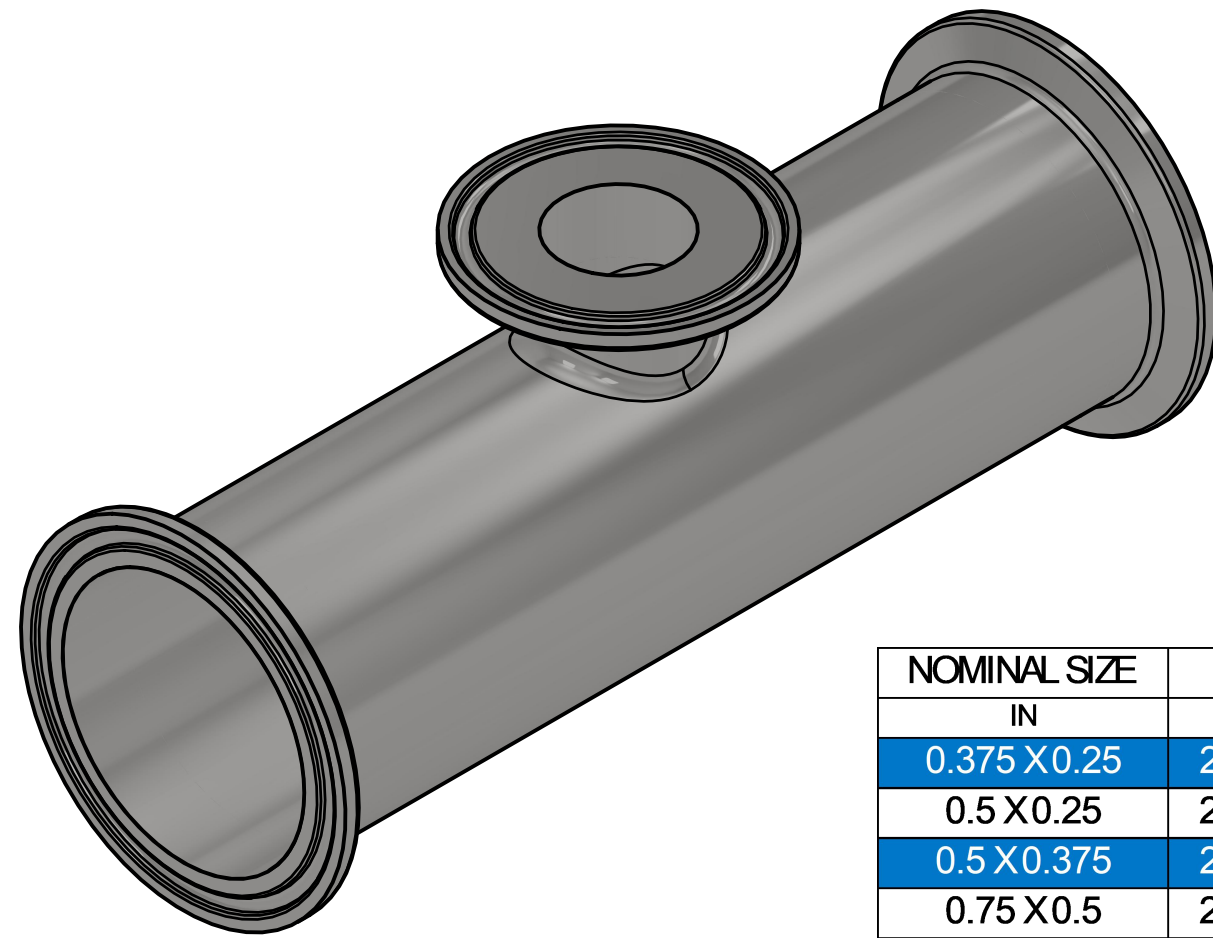


COMMON FINISHES

DESIGNATION	PROCESS CONTACT	NON-PROCESS CONTACT
-1	MILL	MILL
-7	32 RA	32 RA
-PL	20 RA	32 RA
-PO	20 RA EP	32 RA
-PM	15 RA EP	32 RA



NOMINAL SIZE	A		B		C		D		E		F	
	IN	MM	IN	MM	IN	MM	IN	MM	IN	MM	IN	MM
0.375 X 0.25	2.250	57.15	1.000	25.40	0.800	20.32	0.984	24.99	0.800	20.32	0.984	24.99
0.5 X 0.25	2.375	60.33	1.000	25.40	0.800	20.32	0.984	24.99	0.800	20.32	0.984	24.99
0.5 X 0.375	2.375	60.33	1.000	25.40	0.800	20.32	0.984	24.99	0.800	20.32	0.984	24.99
0.75 X 0.5	2.500	63.50	1.000	25.40	0.800	20.32	0.984	24.99	0.800	20.32	0.984	24.99
1 X 0.25	2.625	66.68	1.125	28.58	1.718	43.64	1.984	50.39	0.800	20.32	0.984	24.99
1 X 0.375	2.625	66.68	1.125	28.58	1.718	43.64	1.984	50.39	0.800	20.32	0.984	24.99
1 X 0.5	2.625	66.68	1.125	28.58	1.718	43.64	1.984	50.39	0.800	20.32	0.984	24.99
1 X 0.75	2.625	66.68	1.125	28.58	1.718	43.64	1.984	50.39	0.800	20.32	0.984	24.99
1.5 X 0.5	2.875	73.03	1.375	34.93	1.718	43.64	1.984	50.39	0.800	20.32	0.984	24.99
1.5 X 0.75	2.875	73.03	1.375	34.93	1.718	43.64	1.984	50.39	0.800	20.32	0.984	24.99
1.5 X 1	2.875	73.03	1.375	34.93	1.718	43.64	1.984	50.39	1.718	43.64	1.984	50.39
2 X 0.5	3.375	85.73	1.625	41.28	2.218	56.34	2.516	63.91	0.800	20.32	0.984	24.99
2 X 0.75	3.375	85.73	1.625	41.28	2.218	56.34	2.516	63.91	0.800	20.32	0.984	24.99
2 X 1	3.375	85.73	1.625	41.28	2.218	56.34	2.516	63.91	1.718	43.64	1.984	50.39
2 X 1.5	3.375	85.73	1.625	41.28	2.218	56.34	2.516	63.91	1.718	43.64	1.984	50.39
2.5 X 0.75	3.625	92.08	1.875	47.63	2.781	70.64	3.047	77.39	0.800	20.32	0.984	24.99
2.5 X 1	3.625	92.08	1.875	47.63	2.781	70.64	3.047	77.39	1.718	43.64	1.984	50.39
2.5 X 1.5	3.625	92.08	1.875	47.63	2.781	70.64	3.047	77.39	1.718	43.64	1.984	50.39
2.5 X 2	3.625	92.08	1.875	47.63	2.781	70.64	3.047	77.39	2.218	56.34	2.516	63.91
3 X 0.5	3.875	98.43	2.125	53.98	3.281	83.34	3.579	90.91	0.800	20.32	0.984	24.99
3 X 0.75	3.875	98.43	2.125	53.98	3.281	83.34	3.579	90.91	0.800	20.32	0.984	24.99
3 X 1	3.875	98.43	2.125	53.98	3.281	83.34	3.579	90.91	1.718	43.64	1.984	50.39
3 X 1.5	3.875	98.43	2.125	53.98	3.281	83.34	3.579	90.91	1.718	43.64	1.984	50.39
3 X 2	3.875	98.43	2.125	53.98	3.281	83.34	3.579	90.91	2.218	56.34	2.516	63.91
3 X 2.5	3.875	98.43	2.125	53.98	3.281	83.34	3.579	90.91	2.781	70.64	3.047	77.39
4 X 0.5	4.750	120.65	2.625	66.68	4.344	110.34	4.682	118.92	0.800	20.32	0.984	24.99
4 X 0.75	4.750	120.65	2.625	66.68	4.344	110.34	4.682	118.92	0.800	20.32	0.984	24.99
4 X 1	4.750	120.65	2.625	66.68	4.344	110.34	4.682	118.92	1.718	43.64	1.984	50.39
4 X 1.5	4.750	120.65	2.625	66.68	4.344	110.34	4.682	118.92	1.718	43.64	1.984	50.39
4 X 2	4.750	120.65	2.625	66.68	4.344	110.34	4.682	118.92	2.218	56.34	2.516	63.91
4 X 2.5	4.750	120.65	2.625	66.68	4.344	110.34	4.682	118.92	2.781	70.64	3.047	77.39
4 X 3	4.750	120.65	2.625	66.68	4.344	110.34	4.682	118.92	2.281	57.94	3.579	90.91
6 X 0.5	7.125	180.98	3.625	92.08	6.176	156.87	6.570	166.88	0.800	20.32	0.984	24.99
6 X 0.75	7.125	180.98	3.625	92.08	6.176	156.87	6.570	166.88	0.800	20.32	0.984	24.99
6 X 1	7.125	180.98	3.625	92.08	6.176	156.87	6.570	166.88	1.718	43.64	1.984	50.39
6 X 1.5	7.125	180.98	3.625	92.08	6.176	156.87	6.570	166.88	1.718	43.64	1.984	50.39
6 X 2	7.125	180.98	3.625	92.08	6.176	156.87	6.570	166.88	2.218	56.34	2.516	63.91
6 X 2.5	7.125	180.98	3.625	92.08	6.176	156.87	6.570	166.88	2.781	70.64	3.047	77.39
6 X 3	7.125	180.98	3.625	92.08	6.176	156.87	6.570	166.88	3.281	83.34	3.579	90.91
6 X 4	7.125	180.98	3.750	95.25	6.176	156.87	6.570	166.88	4.344	110.34	4.682	118.92

\* INFORMATION PROVIDED IN THIS DRAWING IS FOR REFERENCE ONLY. FINISH AVAILABILITY DEPENDANT ON MATERIAL



PART NO.: **B7RMPS**

DESCRIPTION: **REDUCING TEE, TC, SHORT BRANCH**

MATERIAL OPTIONS:  
 304/304L SS  
 316/316L SS  
 AL-6XN® - N08367  
 HASTELLOY® C-22® - N06022

DWG NO.: **CDB7RMPS**  
 CREATION DATE: 28OCT2025  
 SHEET: 1 OF 1

REV. -