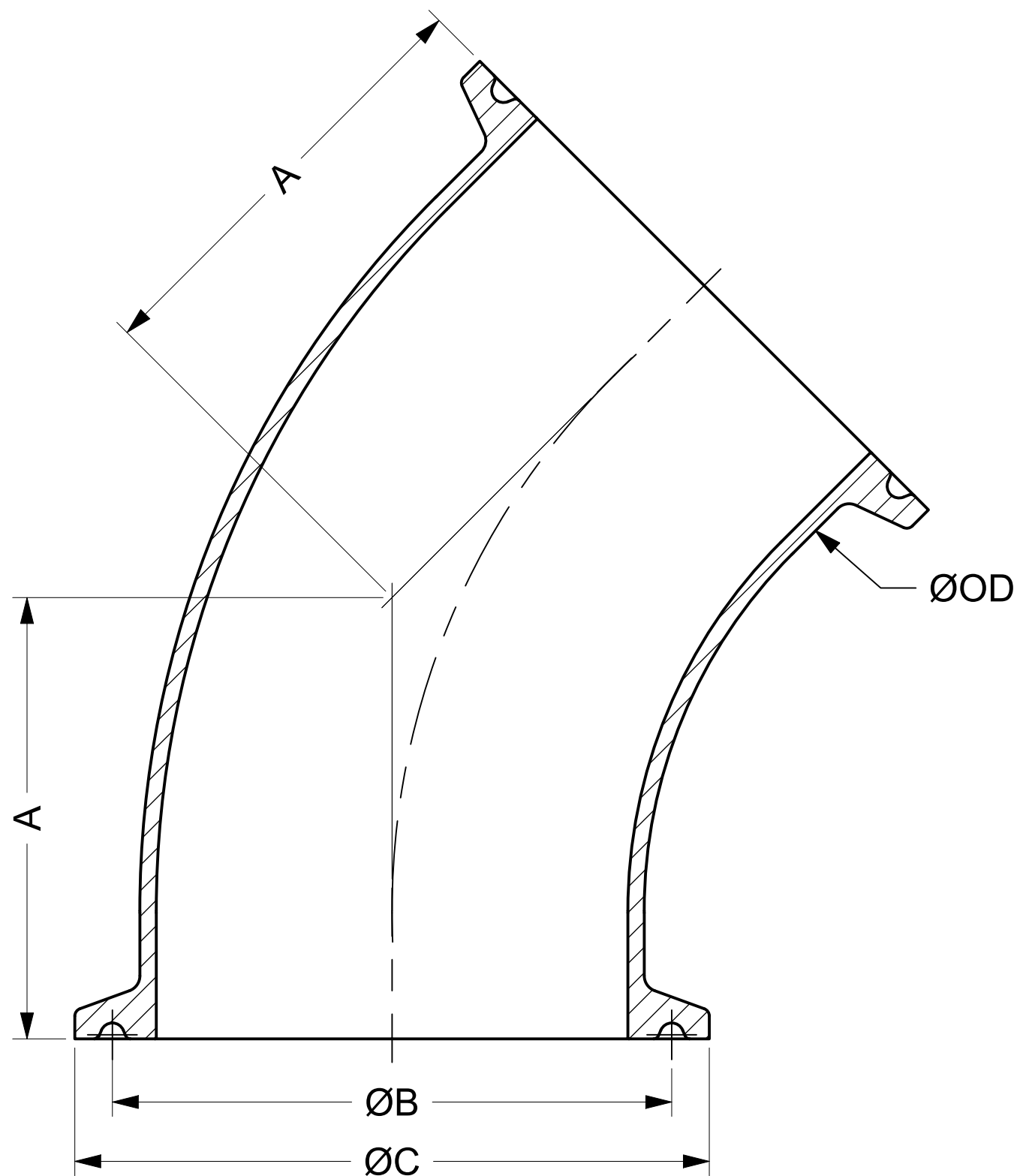
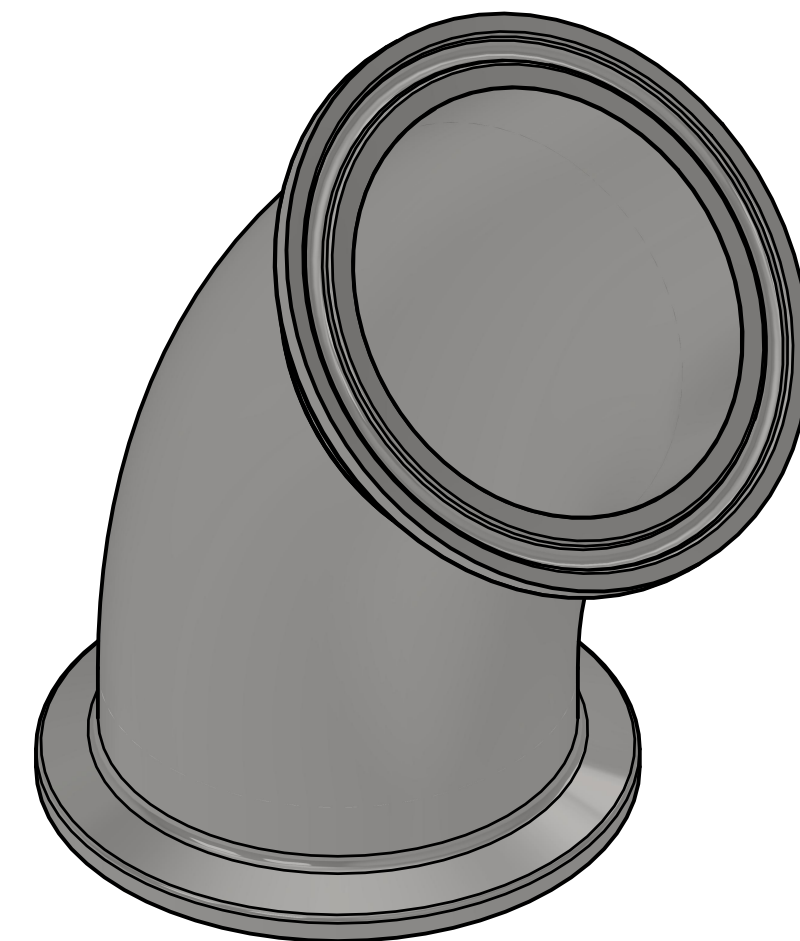
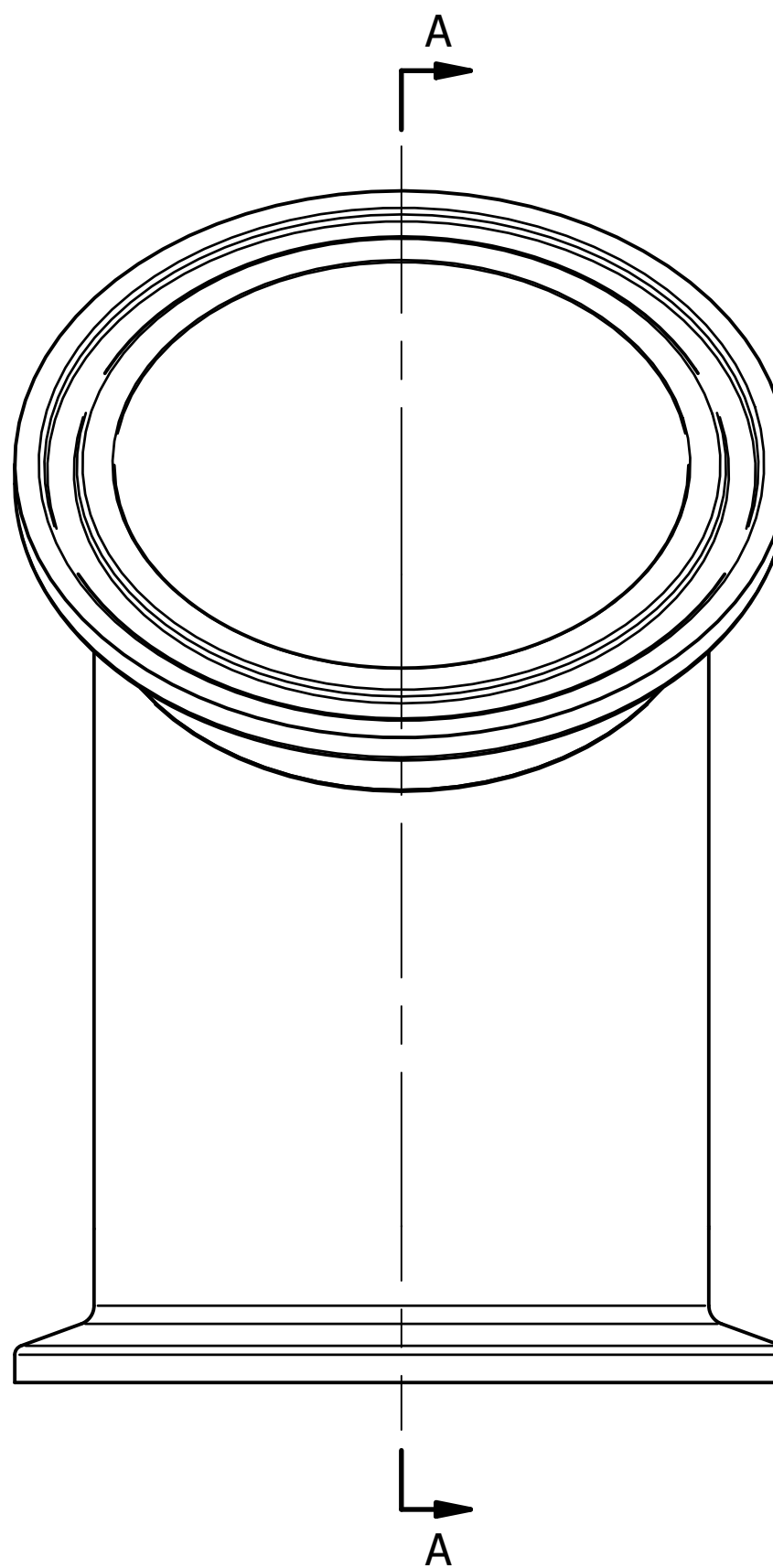


COMMON FINISHES

DESIGNATION	PROCESS CONTACT	NON-PROCESS CONTACT
-1	MILL	MILL
-7	32 RA	32 RA
-PL	20 RA	32 RA
-PO	20 RA EP	32 RA
-PM	15 RA EP	32 RA



SECTION A-A



NOMINAL SIZE		A		B		C		OD	
IN	MM	IN	MM	IN	MM	IN	MM	IN	MM
0.25	6.35	1.00	25.40	0.800	20.32	0.984	24.99	0.250	6.35
0.375	9.53	1.00	25.40	0.800	20.32	0.984	24.99	0.375	9.53
0.5	12.70	1.00	25.40	0.800	20.32	0.984	24.99	0.500	12.70
0.75	19.05	1.00	25.40	0.800	20.32	0.984	24.99	0.750	19.05
1	25.40	1.13	28.70	1.718	43.64	1.984	50.39	1.000	25.40
1.5	38.10	1.44	36.58	1.718	43.64	1.984	50.39	1.500	38.10
2	50.80	1.75	44.45	2.218	56.34	2.516	63.91	2.000	50.80
2.5	63.50	2.06	52.32	2.781	70.64	3.047	77.39	2.500	63.50
3	76.20	2.38	60.45	3.281	83.34	3.579	90.91	3.000	76.20
4	101.60	3.13	79.50	4.344	110.34	4.682	118.92	4.000	101.60
6	152.40	5.25	133.35	6.176	156.87	6.570	166.88	6.000	152.40

\* INFORMATION PROVIDED IN THIS DRAWING IS FOR REFERENCE ONLY. FINISH AVAILABILITY DEPENDANT ON MATERIAL



PART NO.:

B2KMP

DESCRIPTION:

45 DEG ELBOW, TC X TC

MATERIAL OPTIONS:

304/304L SS

316/316L SS

AL-6XN® - N08367

HASTELLOY® C-22® - N06022

DWG NO.

CDB2KMP

CREATION DATE

10SEP2025

SHEET

1 OF 1

REV.

-